



Zoom H6 Handy Recorder Audio Input Jack Replacement

The visible parts of the input jacks are...

Written By: Rachel Calder



INTRODUCTION

The visible parts of the input jacks are located on the top sides of the device. The top left side contains inputs 1 and 2 while the top right side contains inputs 3 and 4. To replace the inputs, the removal of the button circuit board and the motherboard are required.

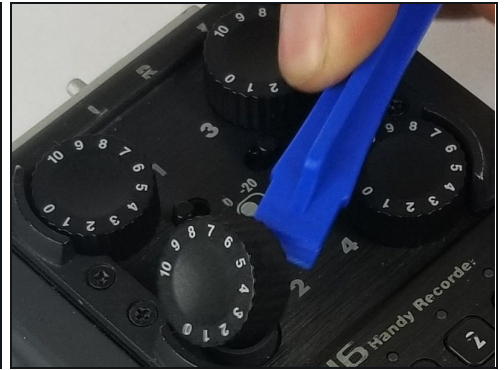
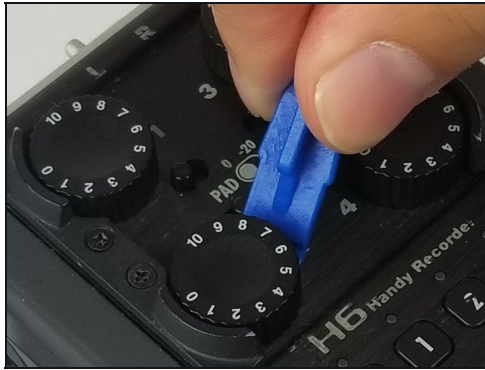
TOOLS:

[iFixit Opening Tool](#) (1)

[Phillips #1 Screwdriver](#) (1)

[Tweezers](#) (1)

Step 1 — Case



- Place device face up and pry off the four knobs using the flat end of the plastic opening tool.
- ① You may need to stabilize the device with the other hand.

Step 2



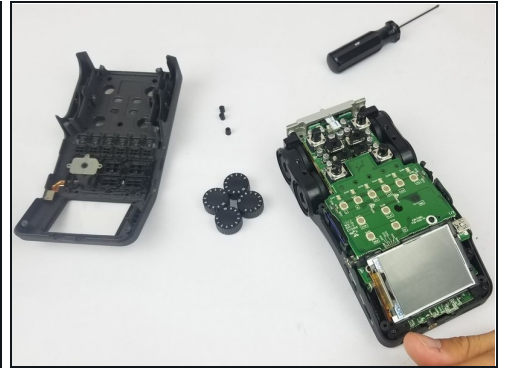
- With device facedown, lift the four rubber feet from the device using [tweezers](#) or fingernails.

Step 3



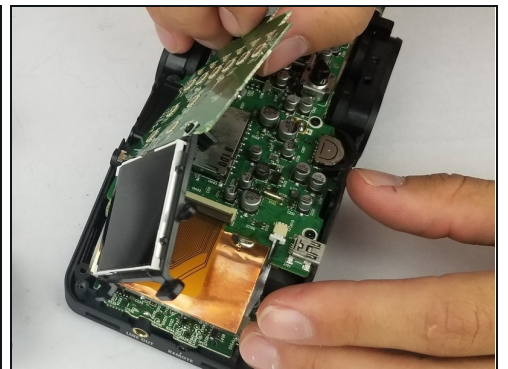
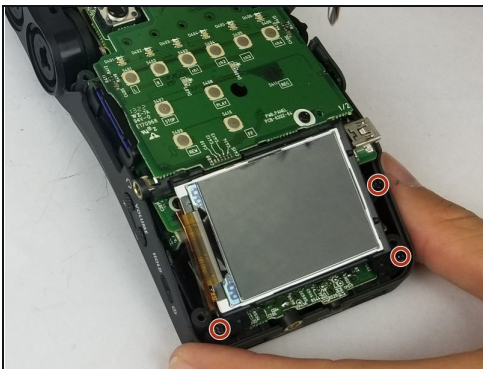
- With device still facedown, unscrew six (PH #1), 9mm screws; two located in center of back side of device right above the battery cover, and four under the rubber feet.
- i** An electronics screwdriver small enough to fit in hole (4mm diameter), but long enough to reach the screws (at least 2cm) will be required to unscrew the screws.

Step 4



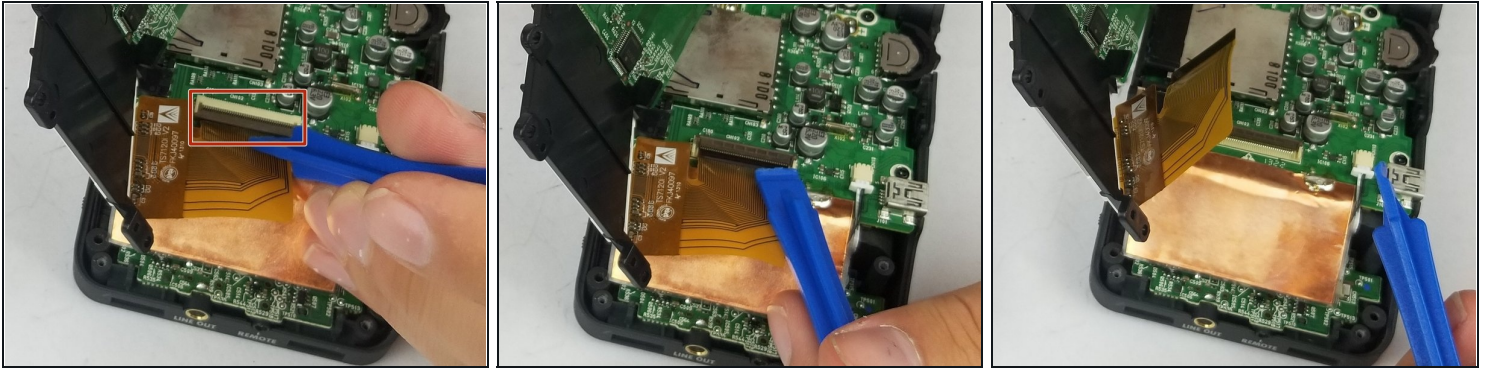
- With the bottom of the device on a table, lift the top of the device and gently place it aside.

Step 5 — Motherboard



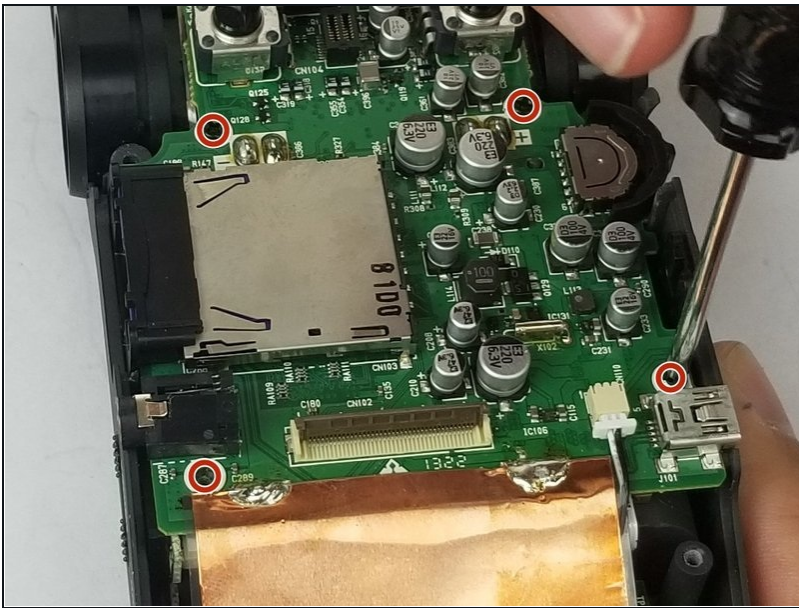
- Unscrew three (PH #1), 7mm screws from the display backing and gently flip over.

Step 6



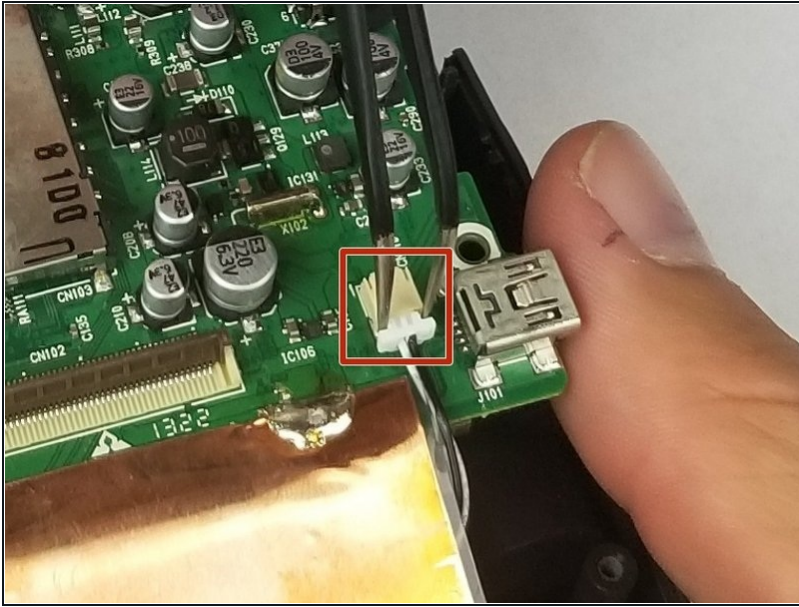
- Using a plastic opening tool, unlatch the clip and carefully unplug the ribbon connector from the device.
- Set the button board aside.

Step 7



- Unscrew four (PH #1), 8mm screws from the motherboard.

Step 8



- Disconnect wire from motherboard using [tweezers](#).

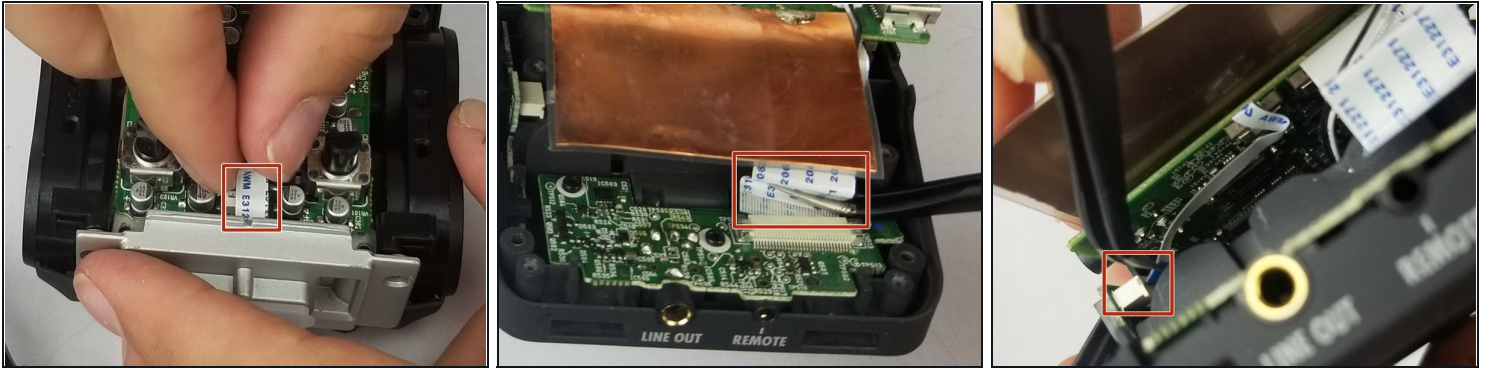
⚠ Do not touch the motherboard with metal tweezers. Only touch the plastic part of the plugged-in wire.

Step 9



- Turn device 180 degrees to unscrew two (PH #1), 8mm screws from the mic connector.

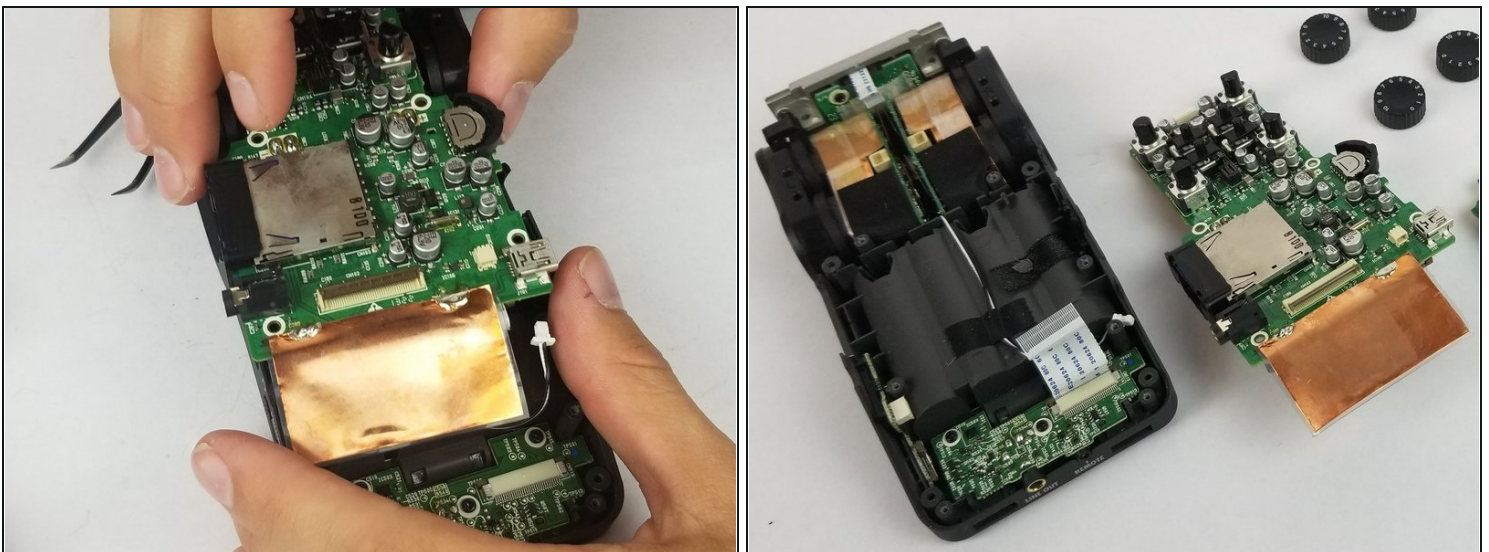
Step 10



- Gently remove three ribbon connectors from the device.
 - The first is connected to the mic connector.
 - The second is connected to the base of the device, and the third is connected to the power switch on the side of the device; turn the device 180 degrees, and the connectors are near the top of the device next to the "LINE OUT" plug-in (directly behind the device display).
- ⓘ It's best to use tweezers to remove the two ribbon connectors behind the display.

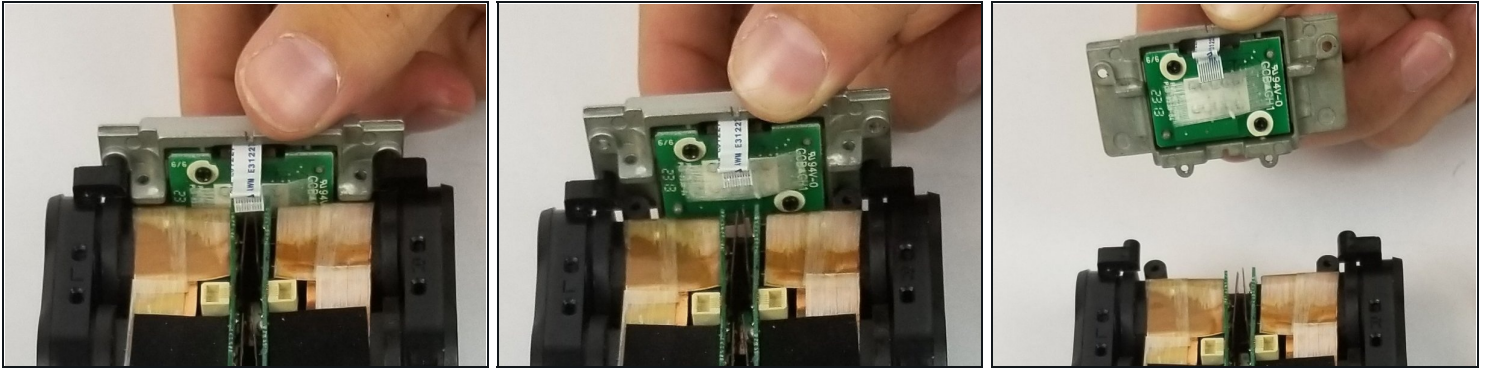
⚠ Avoid touching anything but the ribbon connectors with the metal tweezers.

Step 11



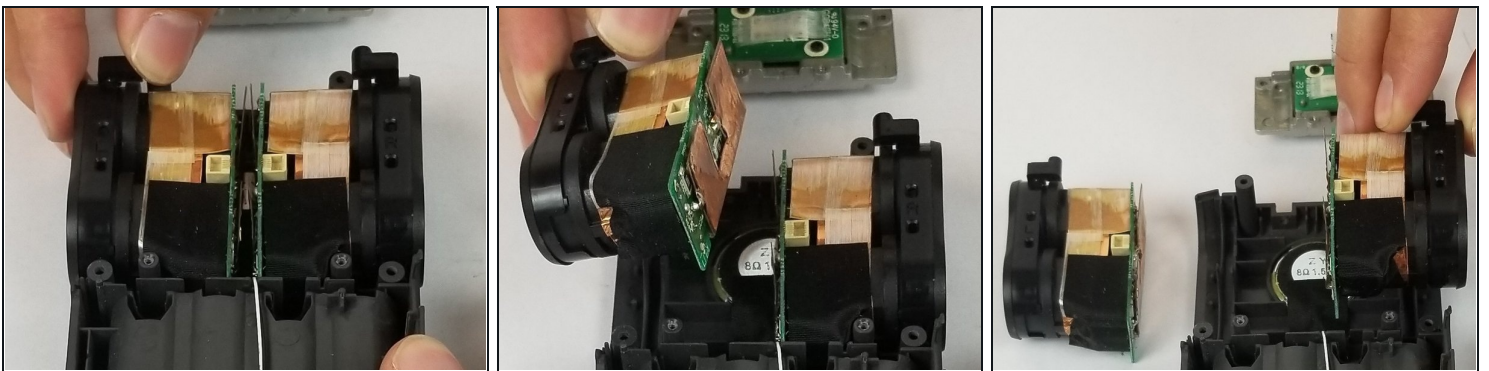
- Gently lift the motherboard from the base of the device and set aside.

Step 12 — Audio Input Jack



- Lift the mic connector out of the base of the device.

Step 13



- Lift the audio input jack to remove it.
- Repeat with the other input jack.

To reassemble your device, follow these instructions in reverse order.