



Apple iSight Webcam Privacy Lens Replacement

This guide will demonstrate how to access the Apple iSight Privacy Lens in order to replace them.

Written By: Cullen Shorey



INTRODUCTION

This is a replacement guide for the Apple iSight webcam privacy lens. It will demonstrate step-by-step how to disassemble the webcam in order to access the privacy lens.



TOOLS:

- [Phillips #000 Screwdriver](#) (1)
 - [Tweezers](#) (1)
-

Step 1 — External Body Frame



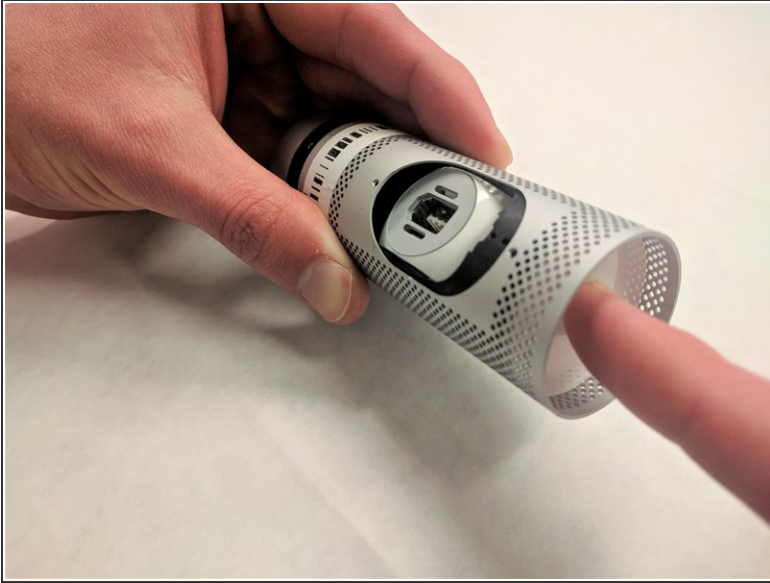
- Remove two 3.55 mm screws that hold the body to the ball and socket joint using the PH000 screwhead.

Step 2



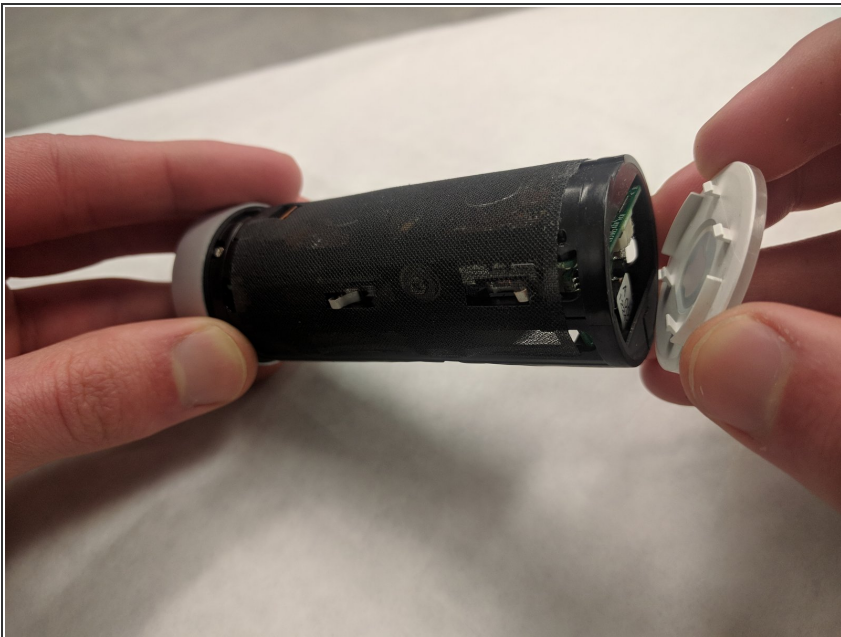
- Insert the tweezers into the crevice of the ball and socket joint, and prop up the tabs to remove the white ring from the body.

Step 3



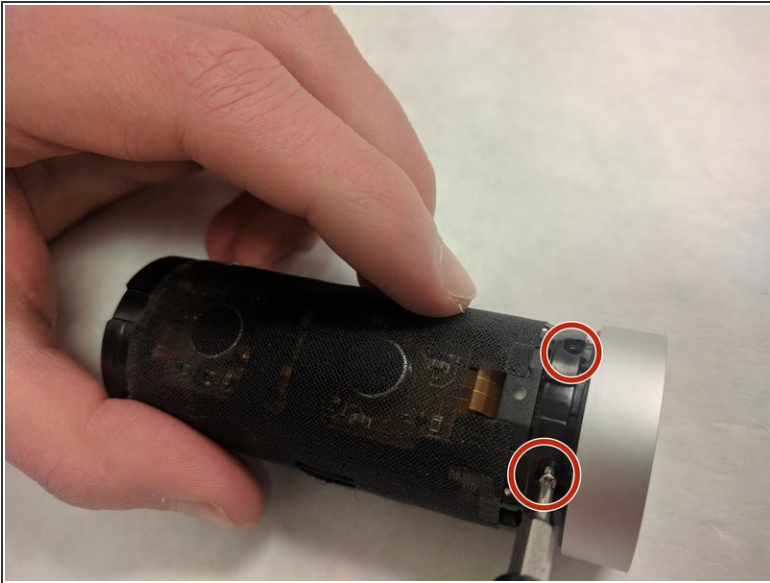
- Press the Apple logo through to pull apart the body frame from the body of the webcam.

Step 4 — Privacy Lens



- Remove the end cap with the Apple logo by simply pulling it off.

Step 5



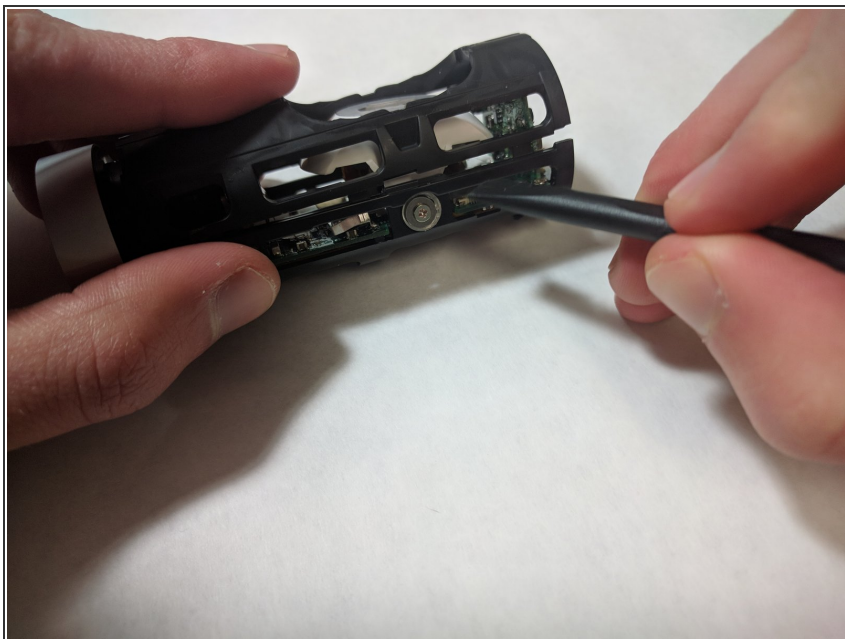
- Unscrew the 3 (3.55 mm) screws surrounding the black casing near the camera-lens.

Step 6



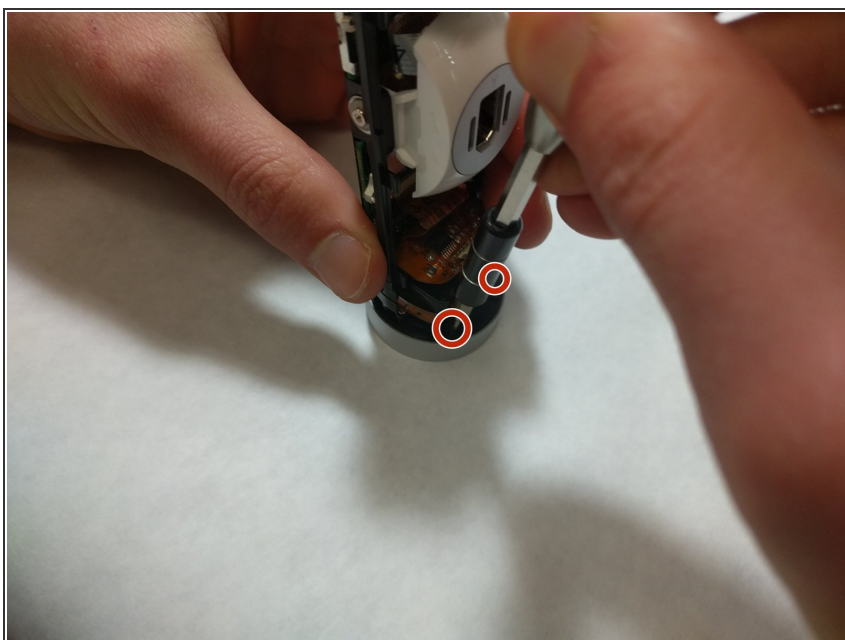
- Using tweezers, remove the netting that surrounds the black casing.

Step 7



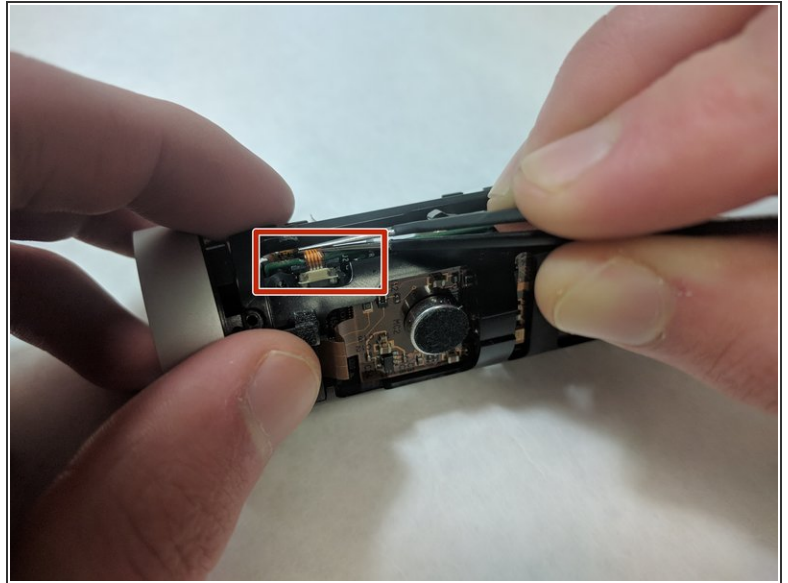
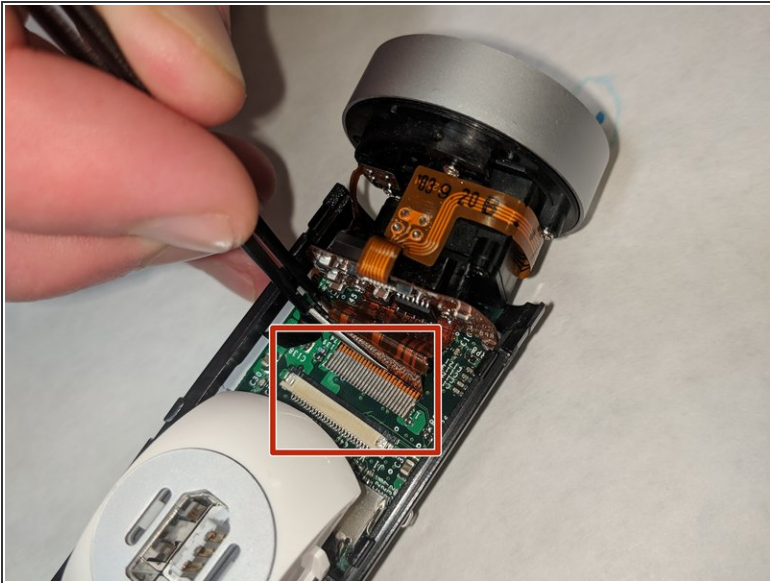
- Pry open the top of the black casing and pull it off.
- ⓘ There is slot on each side just below the power cord connector.

Step 8



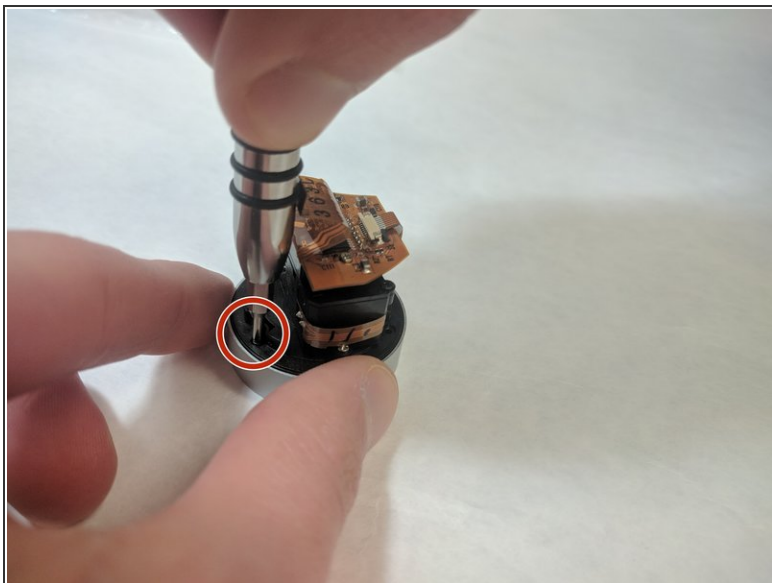
- Unscrew 2 (4.41 mm) screws seen in the picture that surround the attachment of the lens to the main body.

Step 9



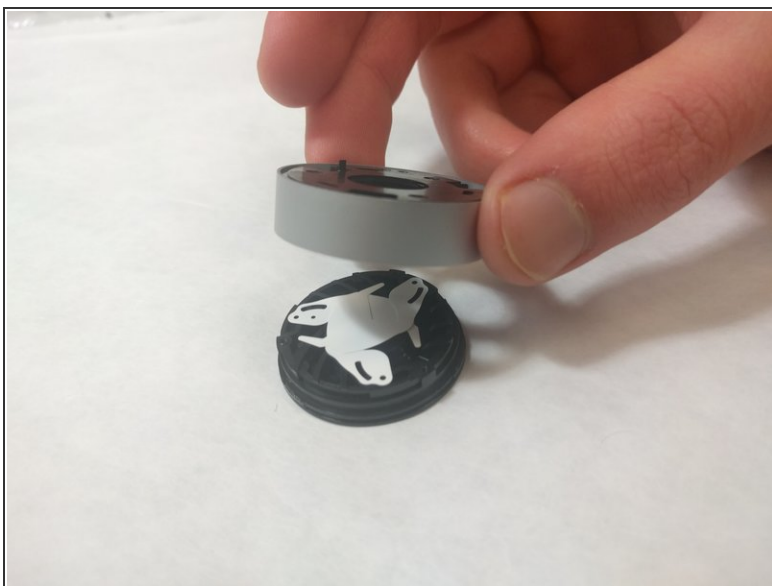
- ,Pull the loose circuit strip from its connection using tweezers.
- Do this for the side connection as well. This enables the entire camera lens section to come off.
- Pull the camera lens section off the main body.

Step 10



- Unscrew the final (4.41 mm) screw that connects the lens circuitry to the aperture.
- Then pull off the circuitry top section.

Step 11



- Pull off the top piece of the lens aperture.
- Finally, remove the privacy lens using tweezers.

To reassemble your device, follow these instructions in reverse order.