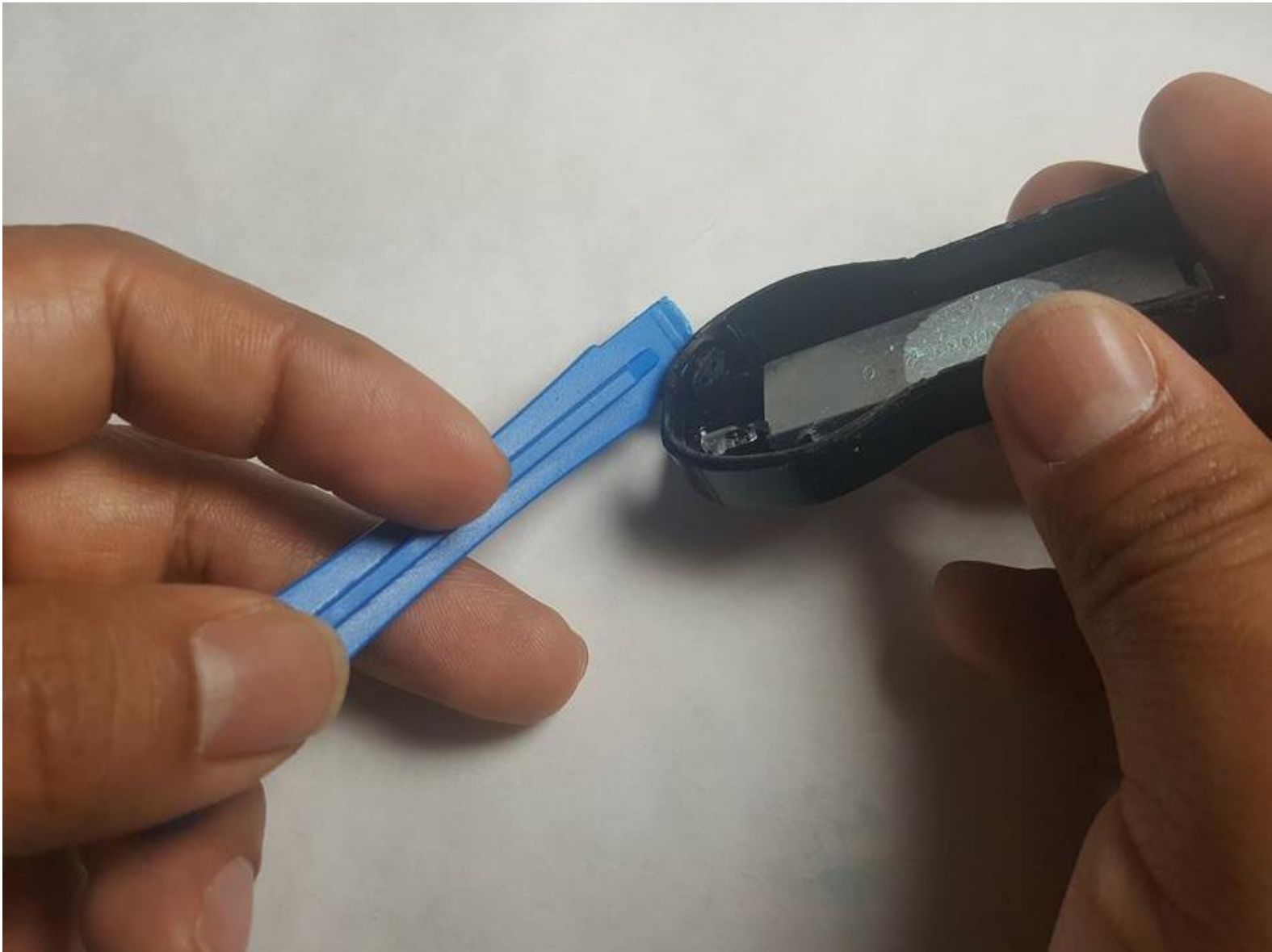




# Chromecast Power Button Replacement

Replace an astray or broken plastic power button.

Written By: Cameron Heiges



---

## INTRODUCTION

Power buttons notoriously end up inside of devices if too much force is applied. This guide aims to replace the power button into it's desired location.

---

### TOOLS:

- [iFixit Opening Tools](#) (1)

**Largest Size**

*Any plastic opening tool can be used.*

---

## Step 1 — Case



- Place the Google Chromecast face down (with text not showing) on a flat surface.
- Insert a flat tool just above the micro-USB port to detach the top part of the case from the bottom.

## Step 2



- Continue prying the top of the case from the bottom toward the HDMI port until the top casing is completely removed.

### Step 3



- Remove the circuit board, lifting from the HDMI port.
- ⓘ The power button may become dislodged.

### Step 4



- Pry the plastic clamp from the heatsink.
- ⓘ Do not pry too hard to avoid breaking the clamp.

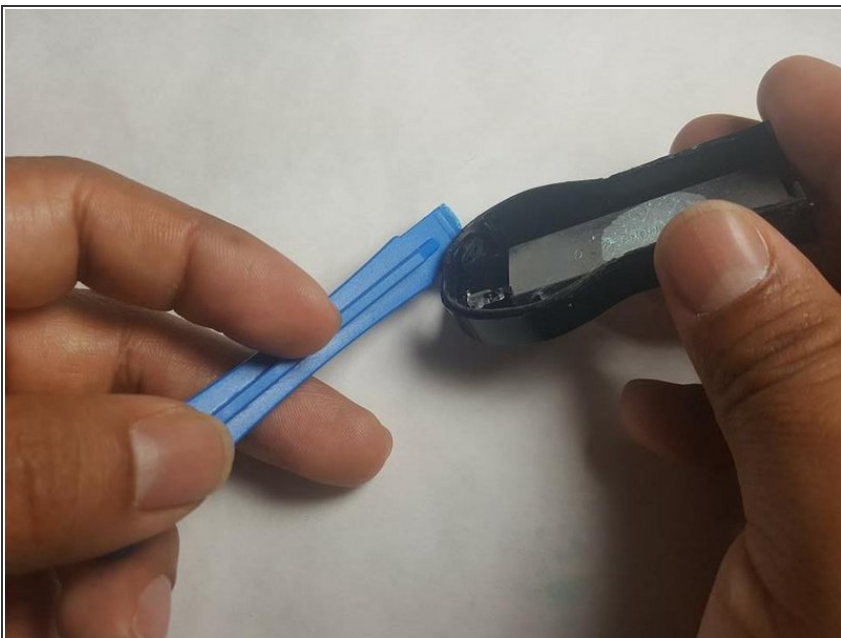


## Step 5



- Insert a plastic opening tool under the heatsink, and pry the heatsink up and out of the case.
- ⓘ The adhesive's strength may vary, and force should be applied gently until it becomes dislodged to avoid breaking the device.

## Step 6 — Power Button



- Press the plastic button from the outside of the port, pushing it inward if it is stuck.

To reassemble your device, follow these instructions in reverse order.