



# Canon EOS Rebel T6i LCD Display Replacement

The Canon EOS T6i was a camera produced and...

Written By: Shane Riding

## INTRODUCTION

The Canon EOS T6i was a camera produced and sold by Canon in 2015. The functionality of the LCD screen is to produce high resolution images of the photos taken by the camera and to adjust any settings within the camera. In any case where your Canon EOS T6i LCD screen is: cracked,damaged,fading or not functional; this guide will show you how to safely disassembly and remove the screen from the camera for replacement.

---

### TOOLS:

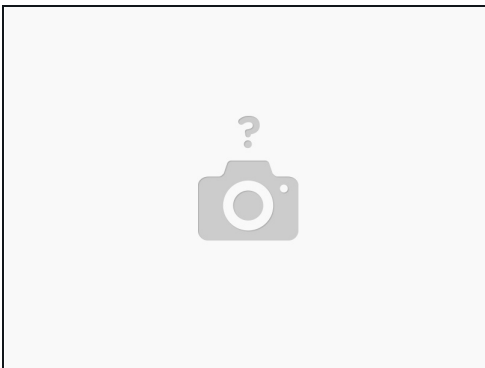
[iFixit Opening Tool](#) (1)

[Metal Spudger](#) (1)

[JIS #000 Screwdriver](#) (1)

---

## Step 1 — LCD Display



- Remove battery and ground your wrist using a grounding strap to prevent damage to device.

## Step 2



- Remove battery and ground your wrist using a grounding strap to prevent damage to device.

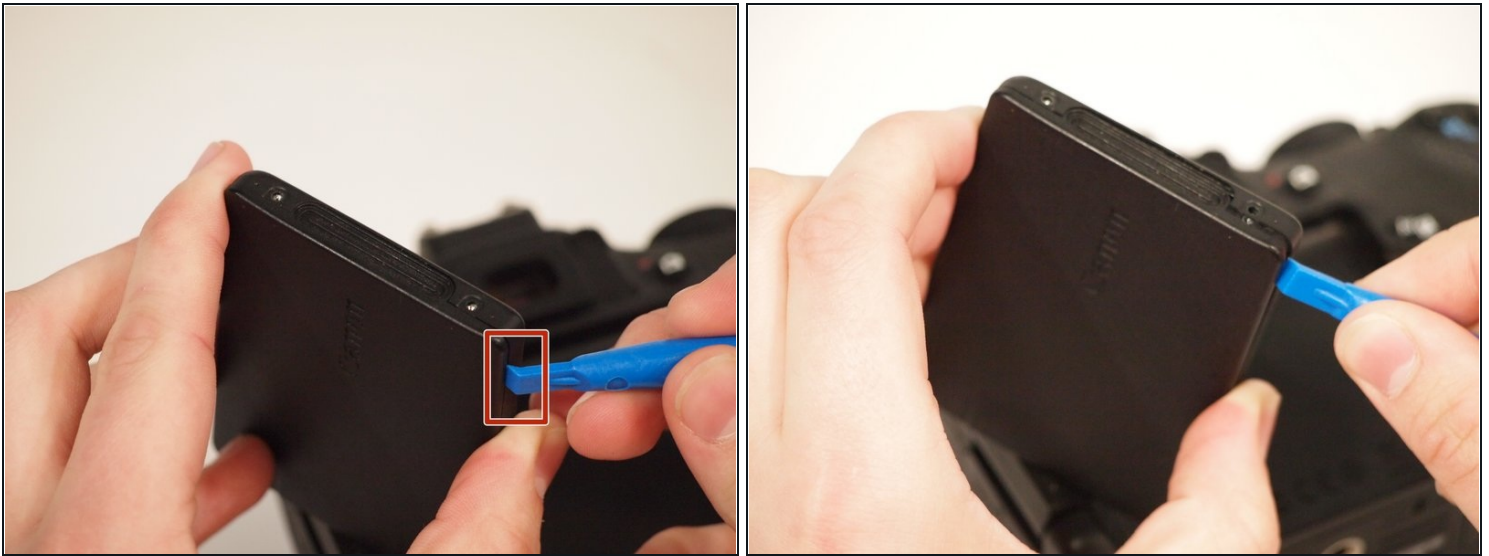
① 2 screws on the side -1.3 mm

## Step 3



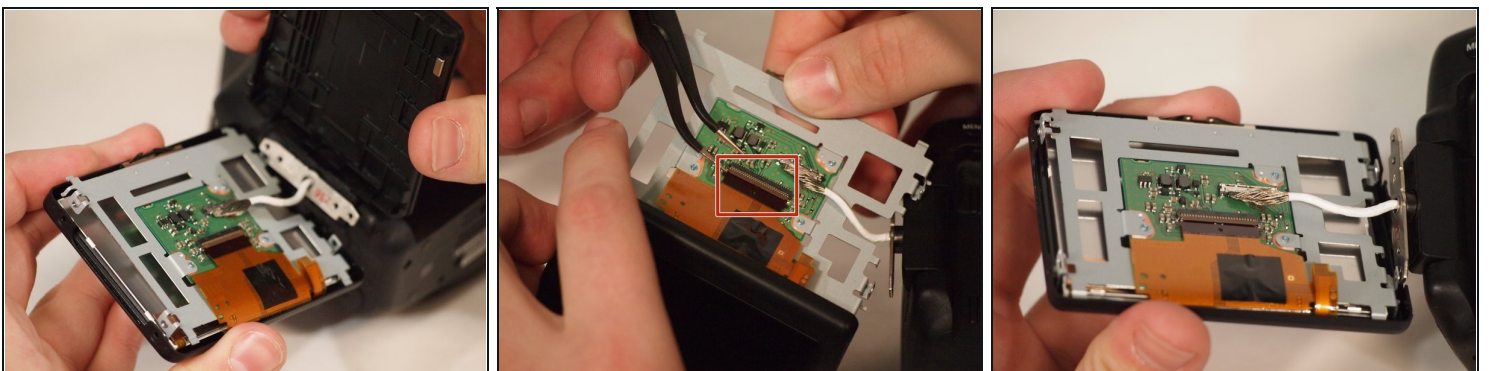
- 4 screws are located on the opposite/interior side of screen case. Use the J000 gauge screw driver head to remove these 4 screws. Furthermore, these screws are a larger gauge than the other 2. Please sort these accordingly.
- 4 small screws on back 1.58 mm

## Step 4



- Following the removal of the 6 screws, Locate the joint of the casing. Place a flat lever inside this crevice and apply pressure. The case should simply pop open into the 2 casing pieces and the screen mechanism. Warning. No Do not try to remove bottom casing until next step.

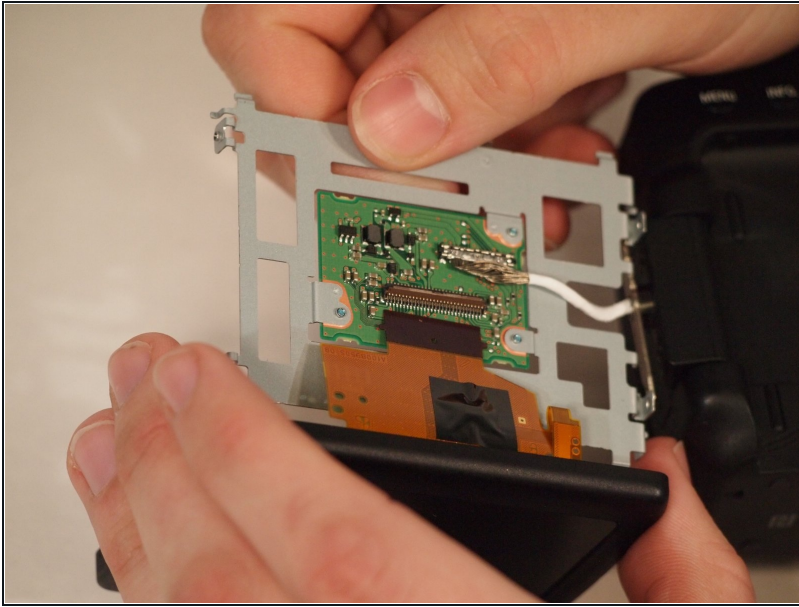
## Step 5



- There are several components inside the casing. A board, a power cable, the screen and a ribbon cable. First, using [tweezers](#) lift the metallic clamp connecting the ribbon to the board.

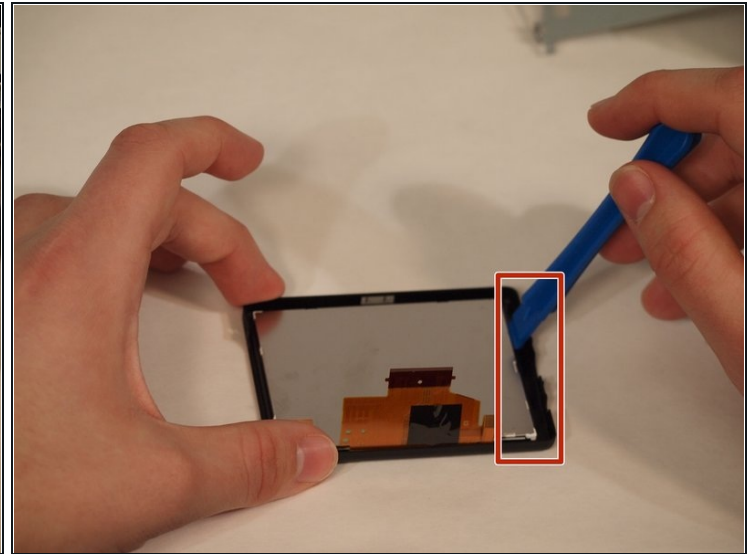
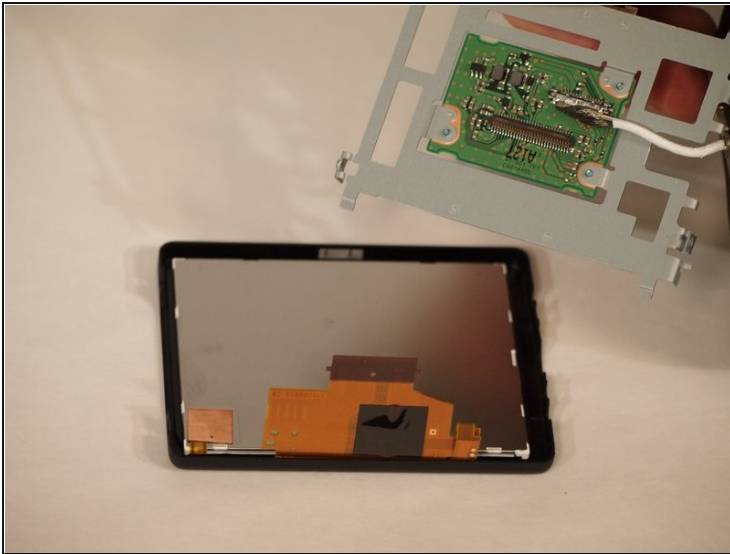
**⚠ WARNING.** If the lever doesn't lift immediately, do not forcefully lift it. This could damage the ribbon and board. When reapplying the ribbon, secure connection.

## Step 6



- Now that the ribbon is disconnected, remove the board carefully and place it aside. This piece still works so leave it attached to camera.

## Step 7



- The screen is glued into the casing. Remove the screen by carefully lifting along the edges of the case until the screen pops out. Place new screen into the existing casing. A small amount of glue or adhesive may be necessary if there isn't sufficient adhesive remaining in the case. Repeat steps in reverse to reapply screen.



## Step 8



- If screen doesn't power on after replacing the battery, Go back and check connections of the ribbon.

---

To reassemble your device, follow these instructions in reverse order.