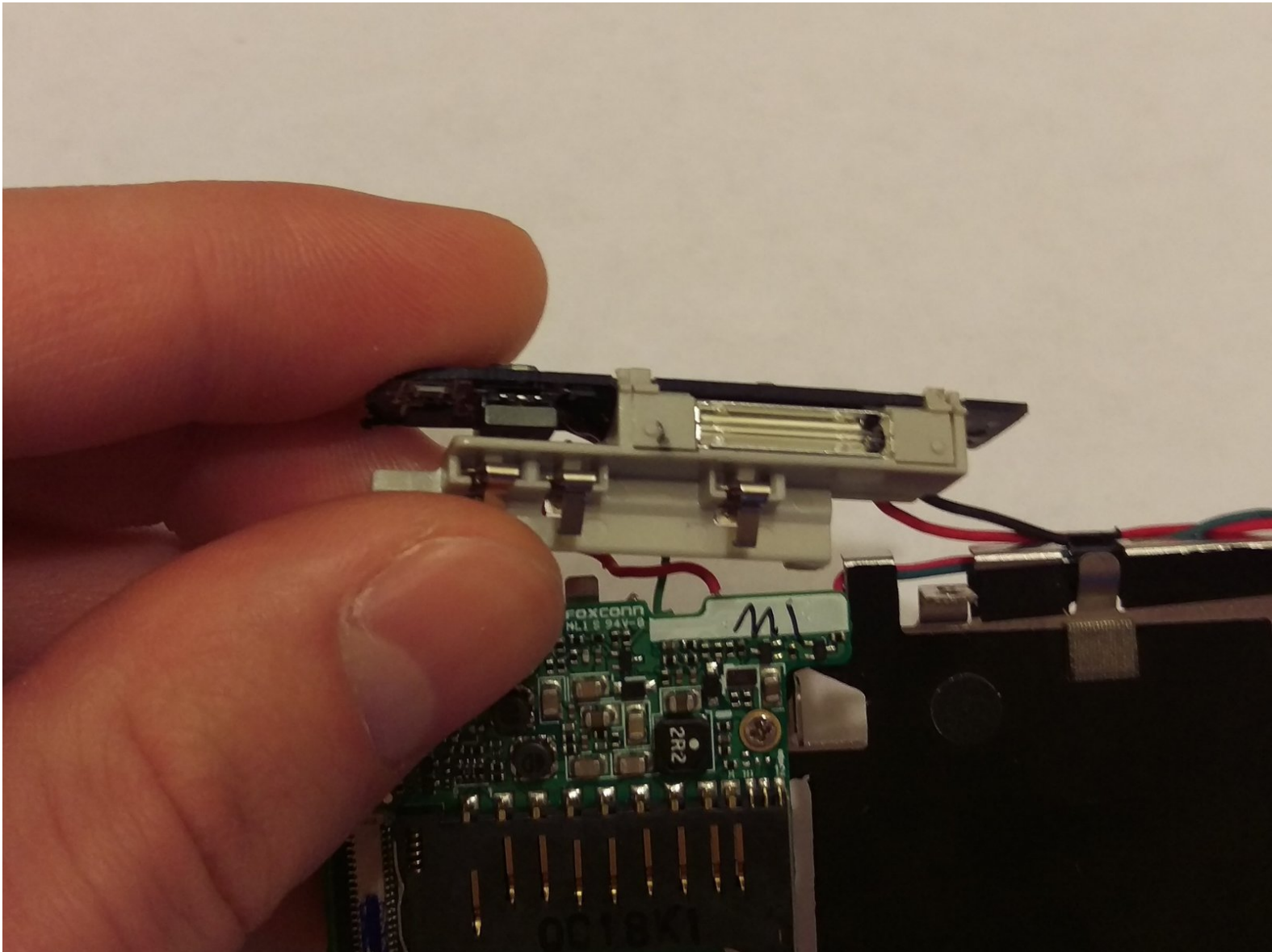




Nikon Coolpix S4000 Camera Light Replacement

How to replace the Nikon Coolpix S4000 Camera Light.

Written By: Matina Newsom



INTRODUCTION

If there are problems with the camera's flash, the camera light may need to be replaced. If you are not sure if you need to replace the camera light, take a look at our camera flash troubleshooting page first.

TOOLS:

- [Spudger](#) (1)
 - [Phillips #000 Screwdriver](#) (1)
 - [Soldering Iron](#) (1)
-

Step 1 — Battery



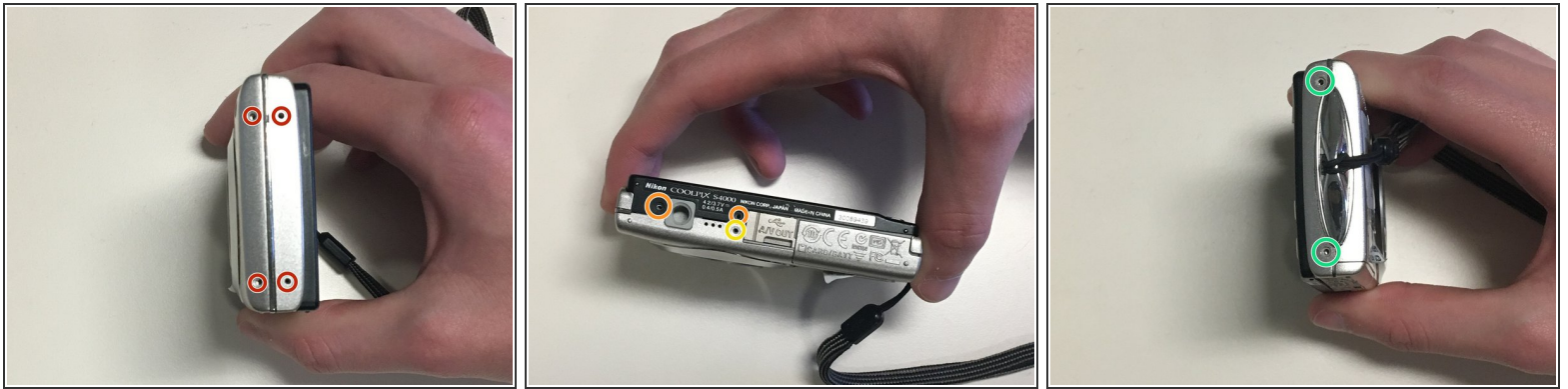
- Slide the battery door open with a finger or thumb and release it so the door opens.

Step 2



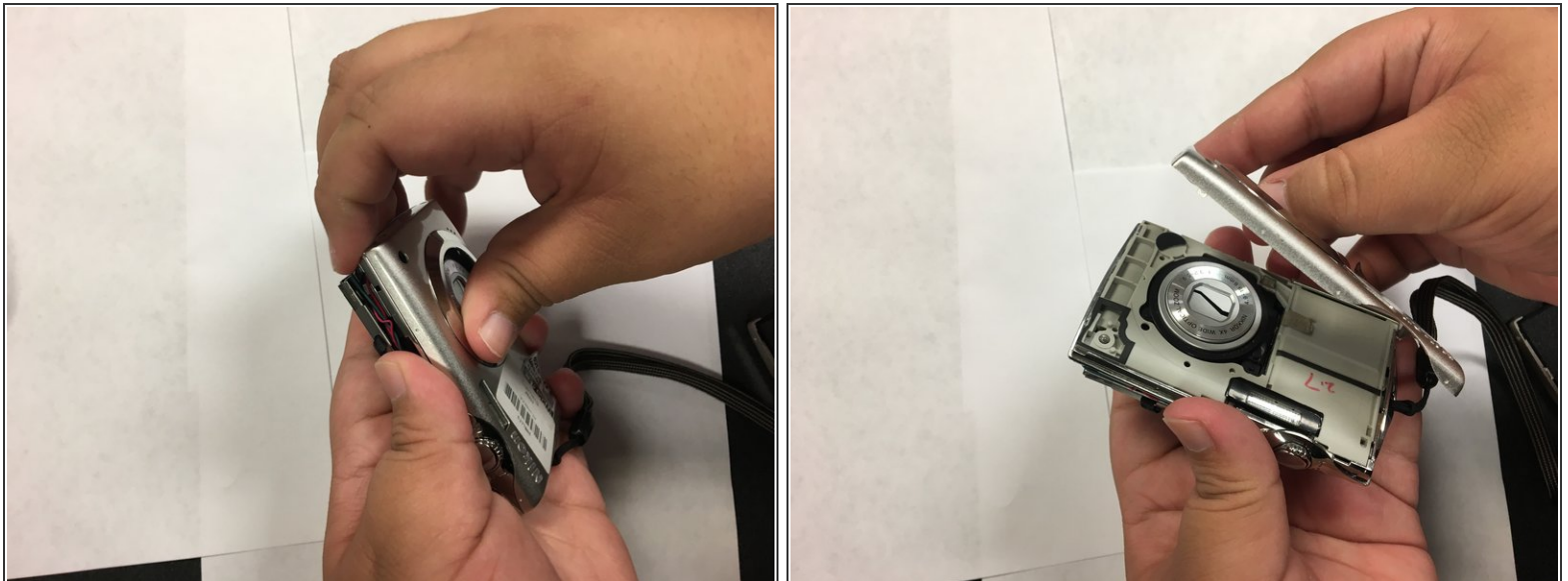
- Push the orange tab back and the battery will pop out.

Step 3 — Casing



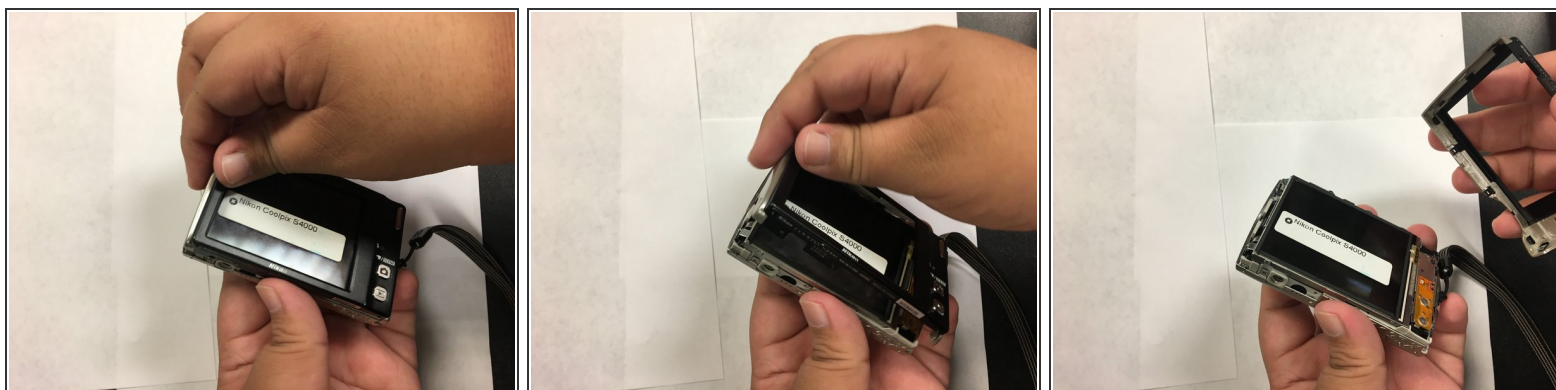
- Remove four 2mm Phillips #000 screws.
- Remove two black 3mm Phillips #000 screws.
- Remove one 4mm Phillips #000 screws.
- Remove two silver 3mm Phillips #000 screws.

Step 4



- Use your fingers, or a spudger, to lift up one end of the casing and then pry the two pieces apart.

Step 5



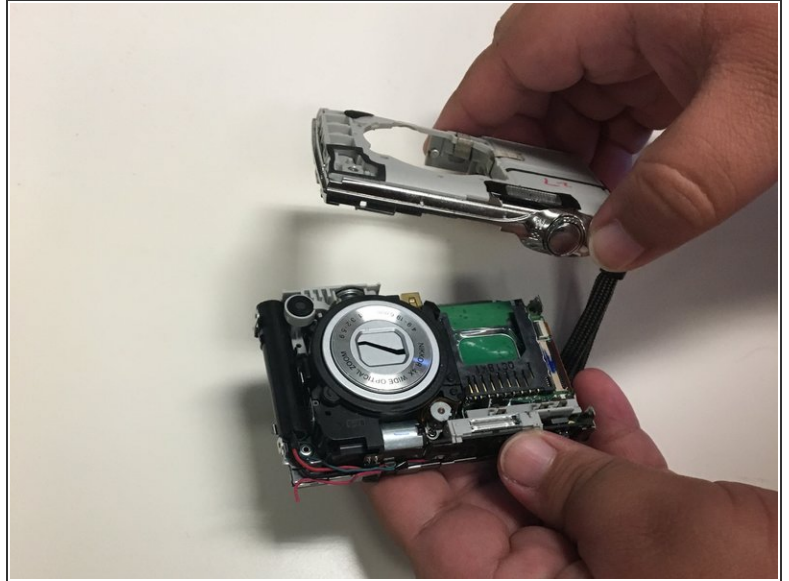
- Turn the camera over.
- Use your fingers, or spudger, to lift one end of the back casing and pry it apart from back of the camera.

Step 6 — Lens Casing



- Remove the single 3mm Phillips #000 screw from the back of the camera.

Step 7



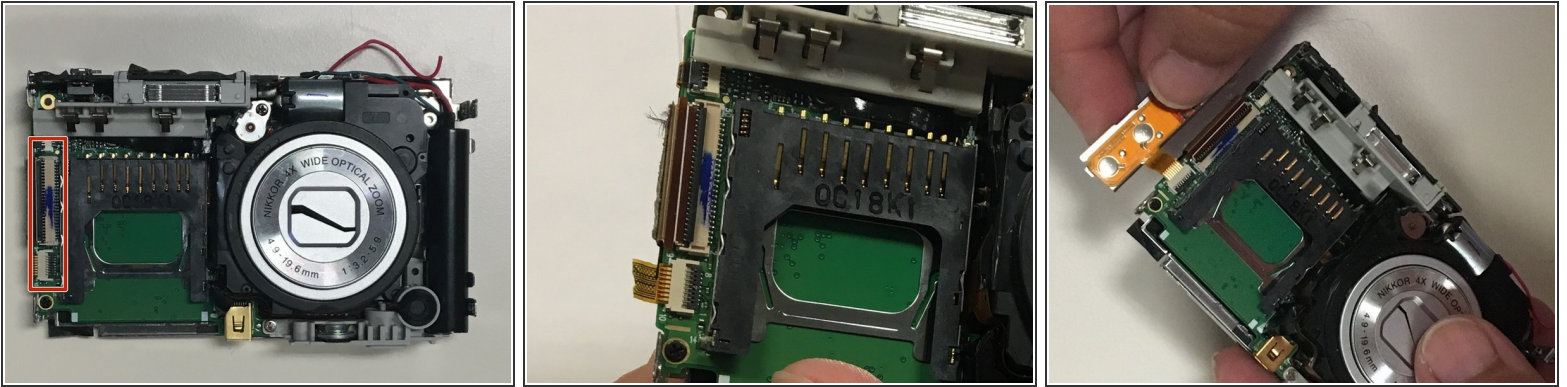
- Turn the camera over and pry the lens casing off by slipping your fingers, or spudger, under the lip of the casing.
 - Desolder the two wires connecting the casing to the motherboard.
- ⚠ Work carefully so that you do not break the soldered wires.

Step 8 — Screen



- Remove the single 2mm Phillips #000 screw.

Step 9



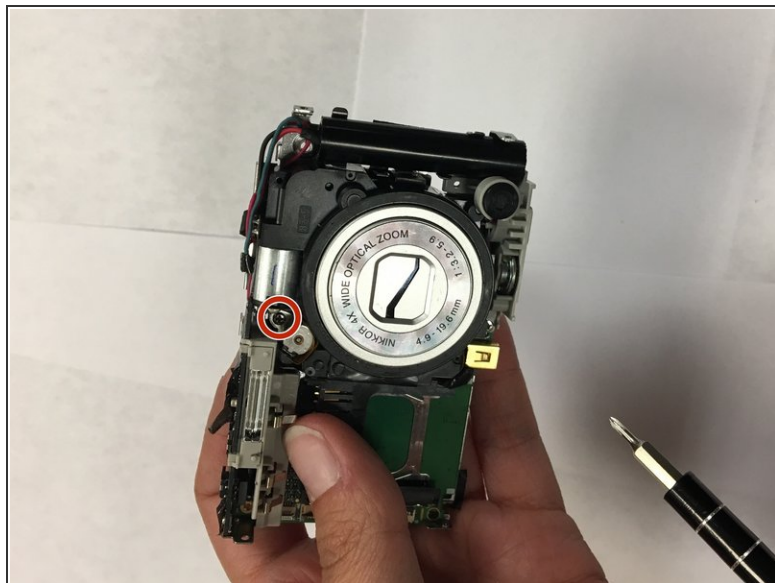
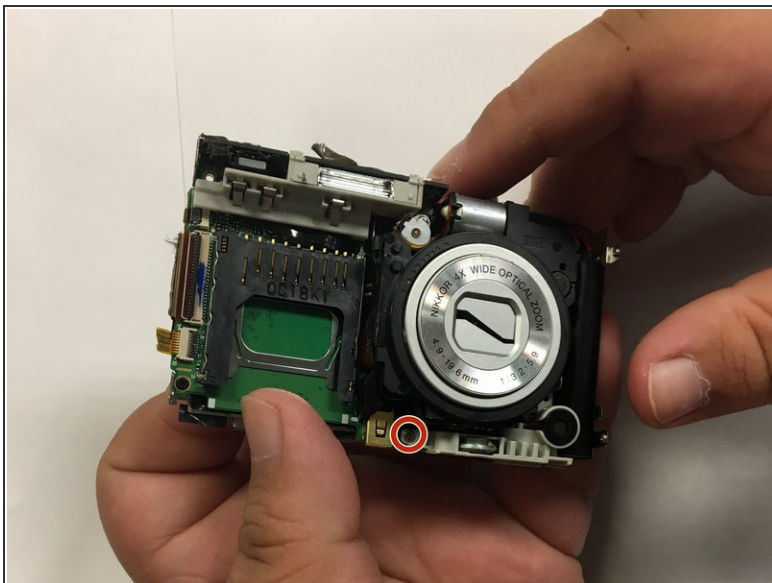
- Use the flat end of a spudger to lift up the black tabs on the ZIF connectors.
- Pull the ribbon cables out of the ZIF connectors.

Step 10



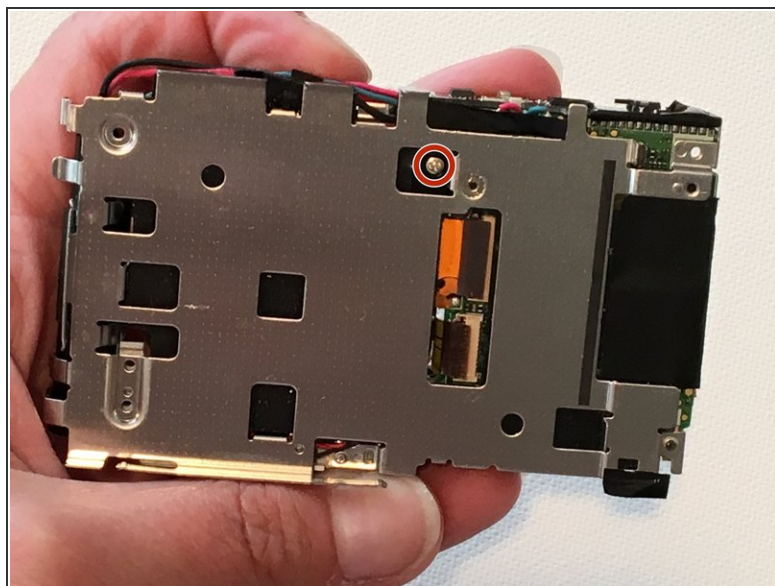
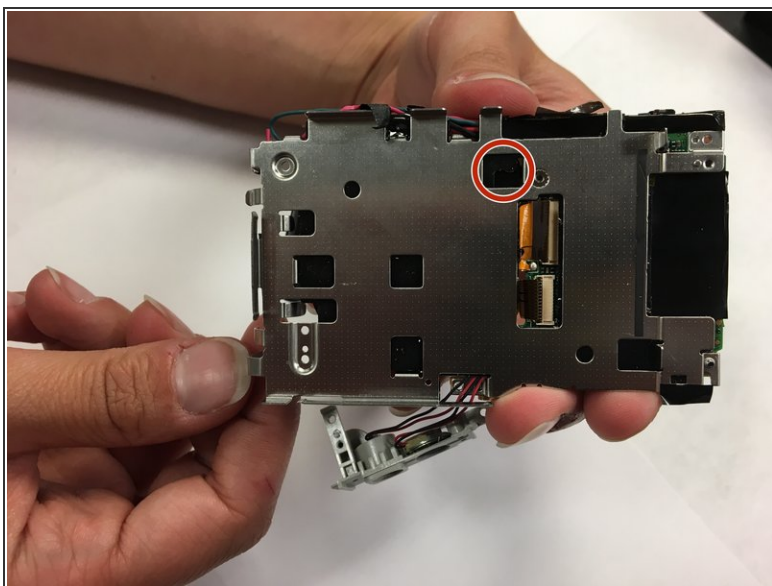
- Grabbing the top left corner of the screen, pull it up until the screen comes completely off.

Step 11 — Lens



- Remove the two 3mm Phillips #000 screws.

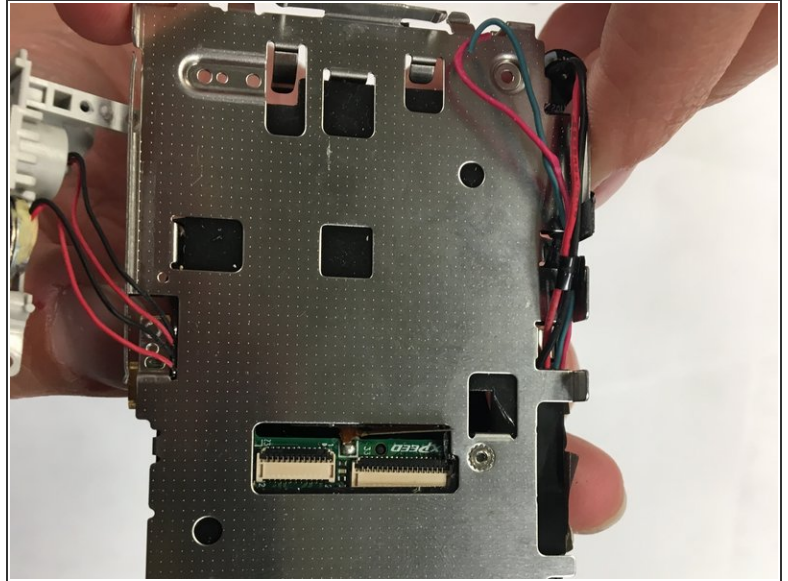
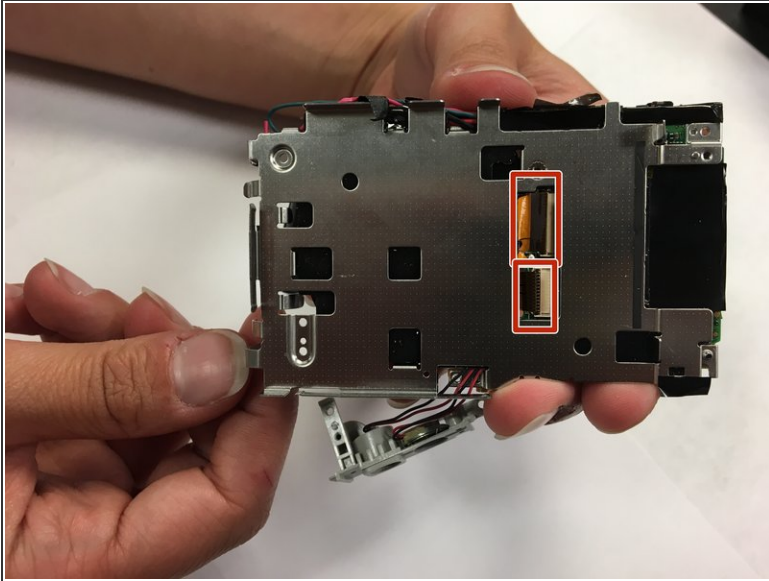
Step 12



- Turn the camera over and remove a single 4mm Phillips #000 screw.

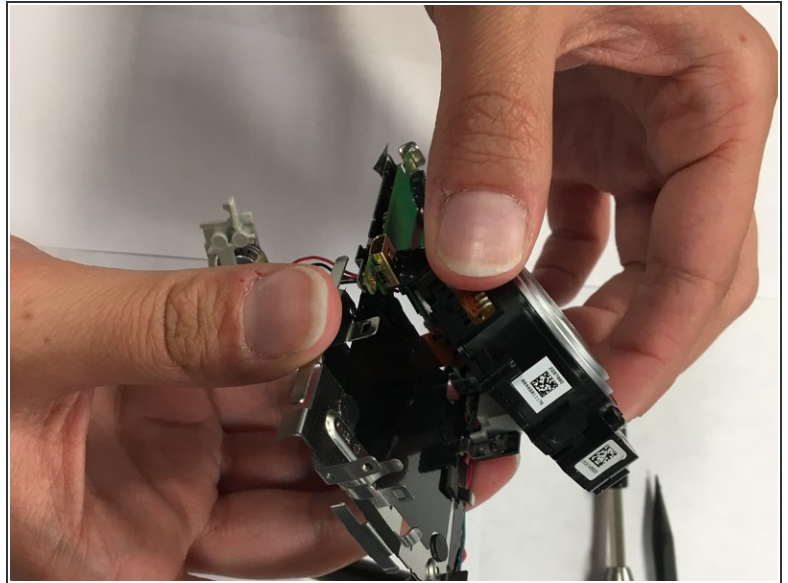
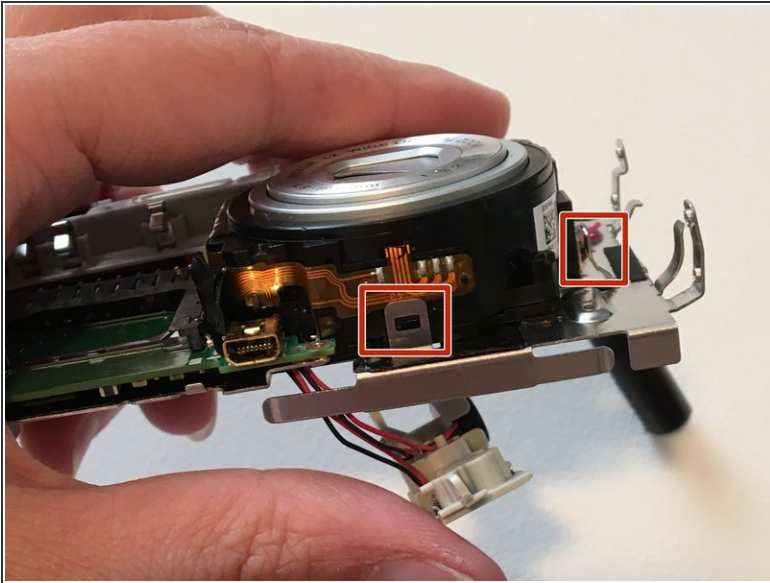
i There may be black tape covering the screw.

Step 13



- Use the flat end of a spudger to flip up the black tabs on the ZIF connectors.
- Pull the ribbon cables out of the ZIF connectors.

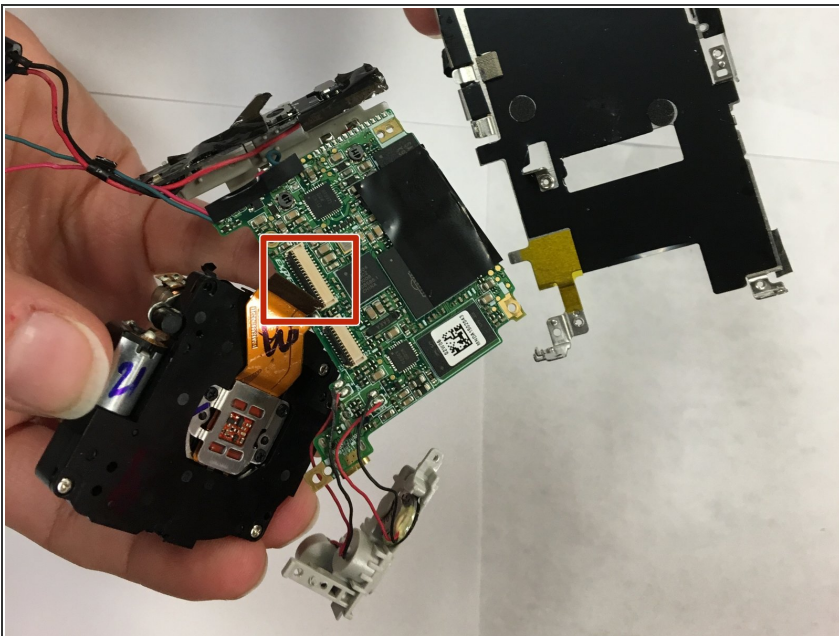
Step 14



- Use the flat end of a spudger to pry the lens locking tabs open while pulling the lens away from the camera body.

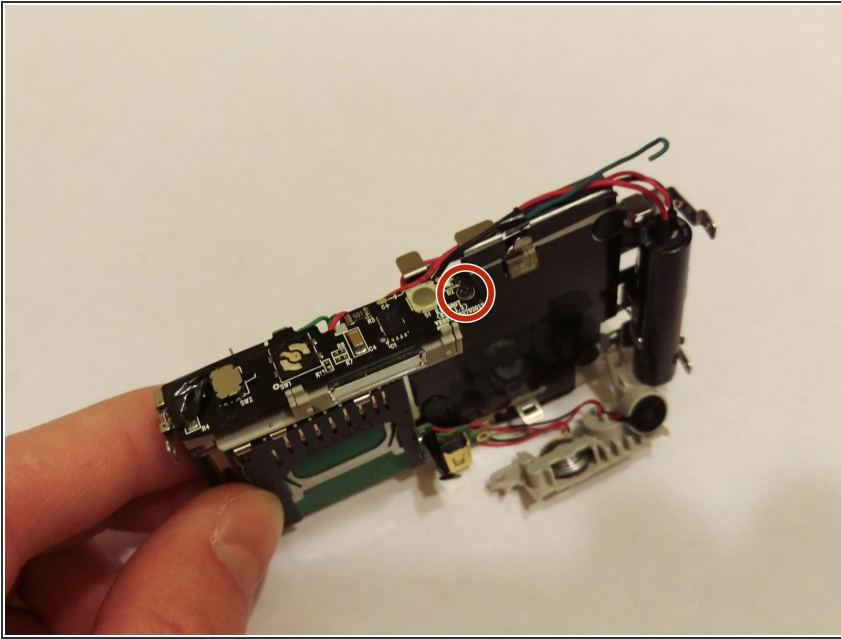
⚠ The tabs are brittle so use gently force.

Step 15



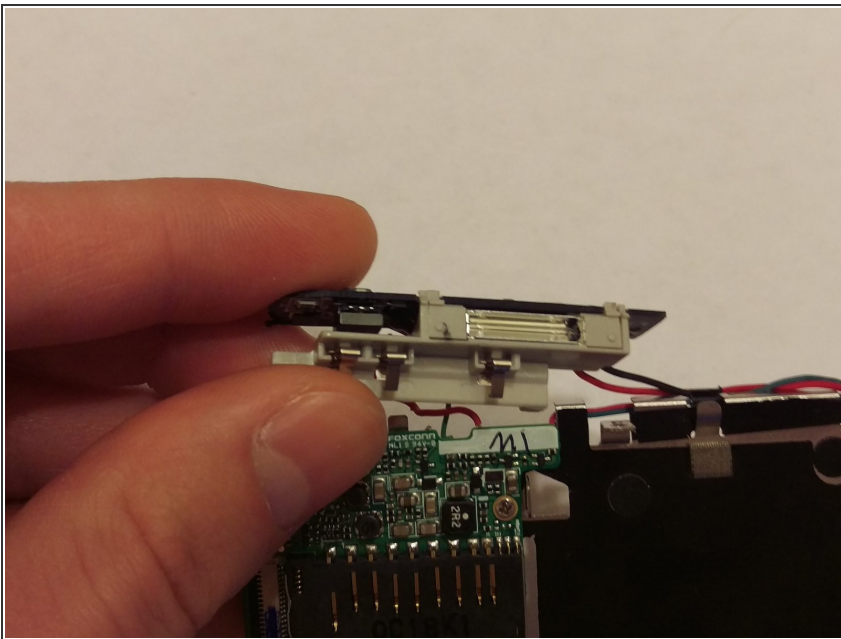
- Use the flat end of a spudger to lift up the black tab on the ZIF connector.
- Pull the orange ribbon cable out of the ZIF connector.
- Separate the lens from the motherboard.

Step 16 — Camera Light



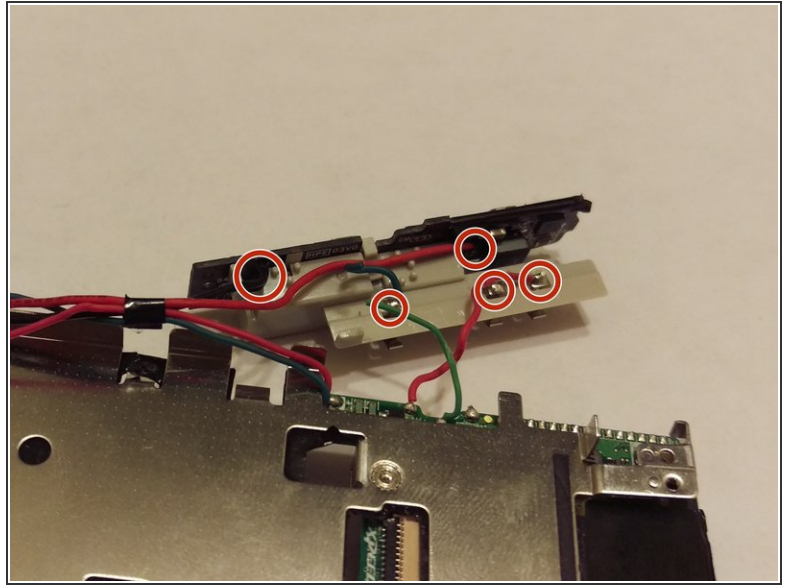
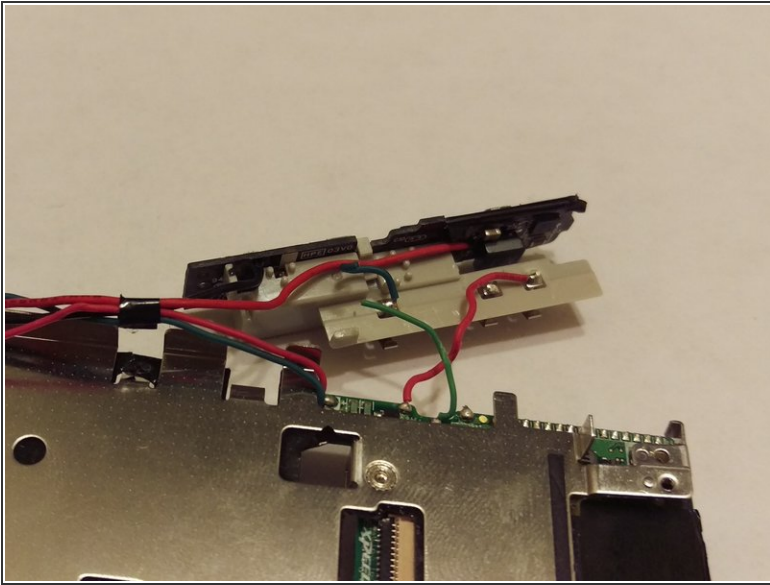
- Remove the 3mm black screw from top of the camera light.

Step 17



- Pull the camera light away to detach it from the camera.

Step 18



- Remove the connected wires from the camera light.
- Solder the wires on to the connectors of the new camera light.

To reassemble your device, follow these instructions in reverse order.