



# Dell Inspiron 15-5559 CD Drive Replacement

This guide will show how to correctly remove the CD Drive.

Written By: Kyla Ward



## INTRODUCTION

Before you begin, you will need a Phillips #1 screwdriver and a black nylon spudger to complete the CD Drive removal. You will also need to remove the battery of your device before you begin.



### TOOLS:

- [Spudger](#) (1)
- [Phillips #1 Screwdriver](#) (1)



### PARTS:

- [m2.5x8 screws](#) (2)

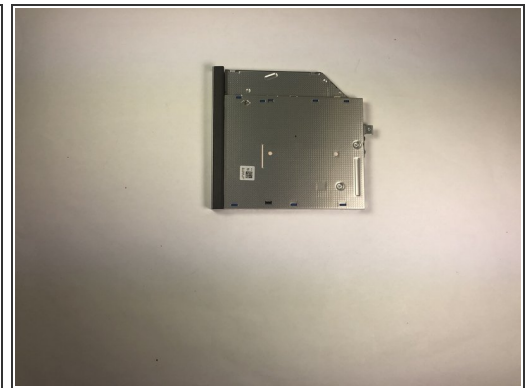
## Step 1 — CD Drive



- Use the Philips #1 to remove the two (2) 2.5x8mm screws that anchor the CD Drive.

⚠ It is important that the correct screw driver is used to remove the screws to prevent damaging them.

## Step 2



- Place the spudger at the spot indicated by the red circle.
- Use your hand to pull the CD drive out while using the spudger as leverage to push the CD drive out.

To reassemble your device, follow these instructions in reverse order.