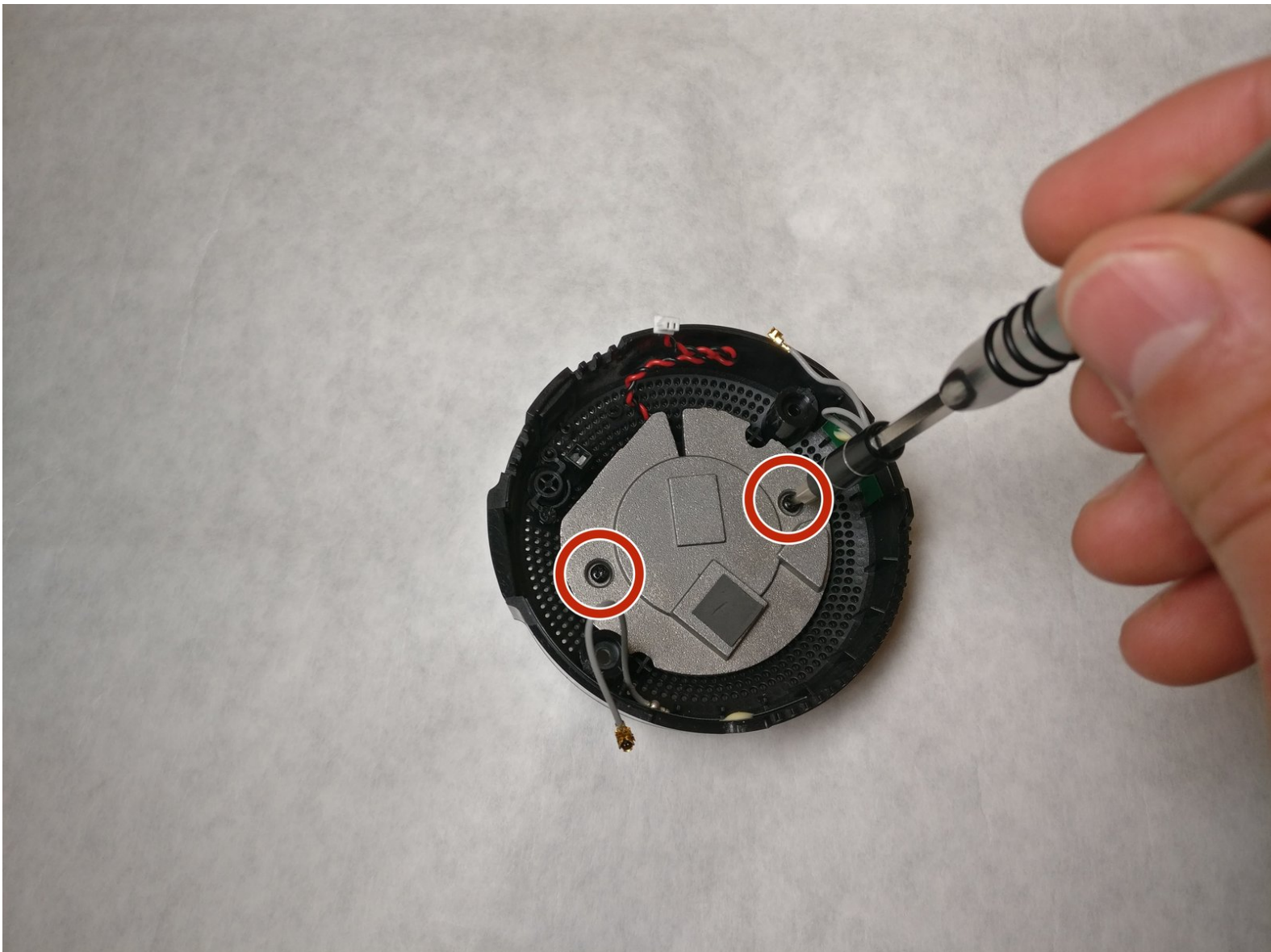




D-Link DCS-2630L Wi-Fi Camera Speaker Replacement

This guide will walk through the necessary steps to replace the speaker in the D-Link DCS-2630L Wi-Fi Camera.

Written By: Collyn Dodge





TOOLS:

- [Phillips #00 Screwdriver](#) (1)
-

Step 1 — Back casing



- Remove the two 9.65 mm screws on the back cover using the Philips head PH00 screw driver.

Step 2



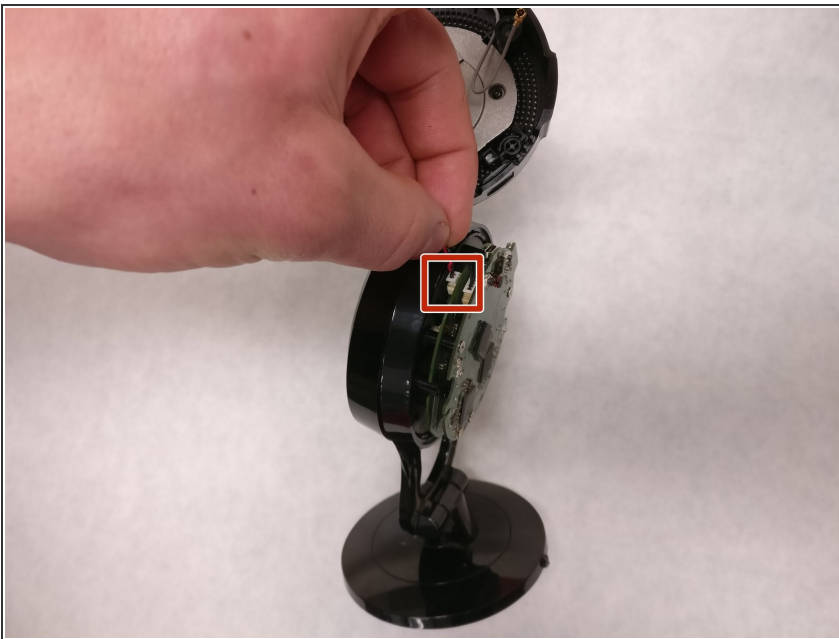
- Remove the back casing to expose the circuit board.

Step 3



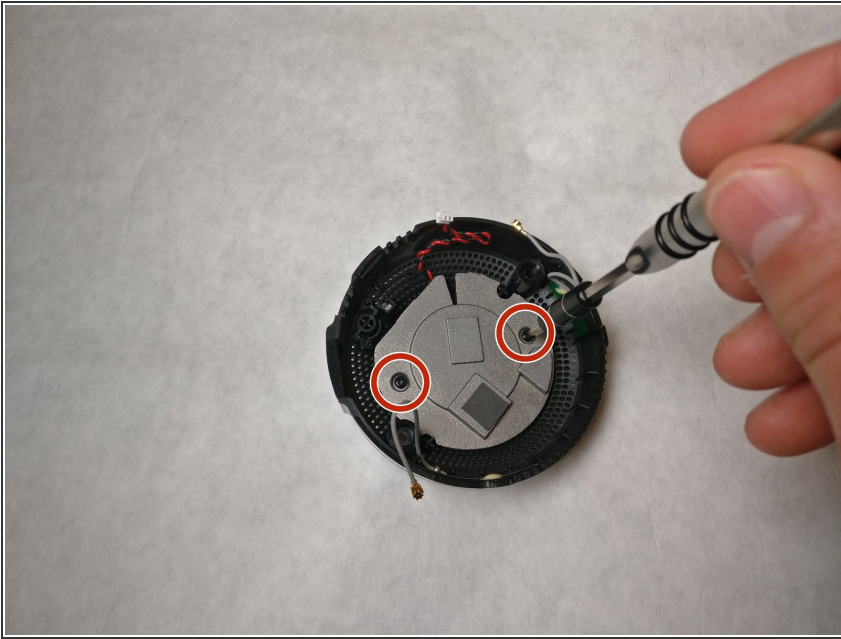
- Detach the gray antenna wires by gently pulling on the side closest to the circuit board.

Step 4



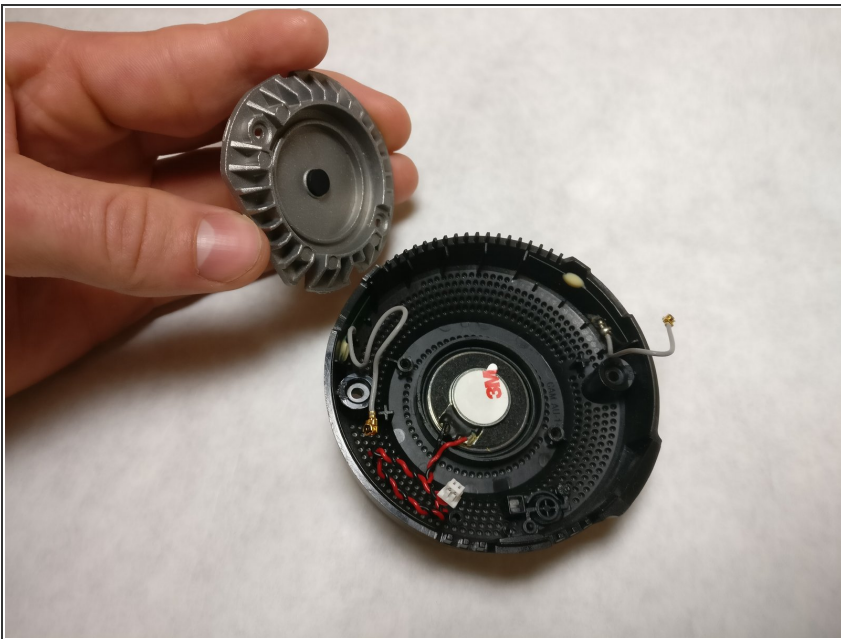
- Detach the speaker wire by gently pulling on the side closest to the body of the camera.

Step 5 — Speaker



- Remove the two 7.25 mm screws using the Ph00 head.

Step 6



- Remove the back grey speaker plate

Step 7



- Remove the speaker by gently pulling on the wire near the speaker.

To reassemble your device, follow these instructions in reverse order.