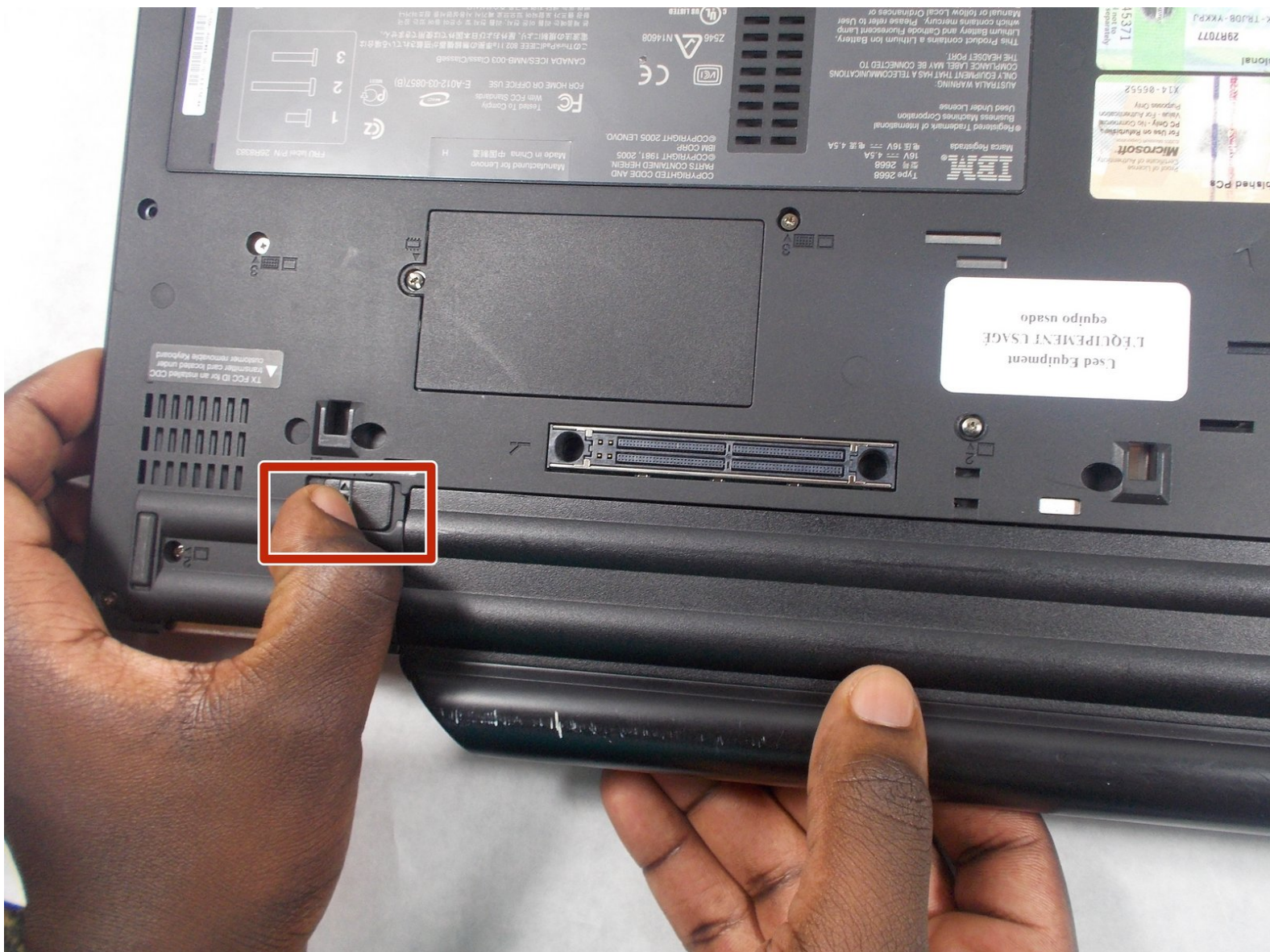




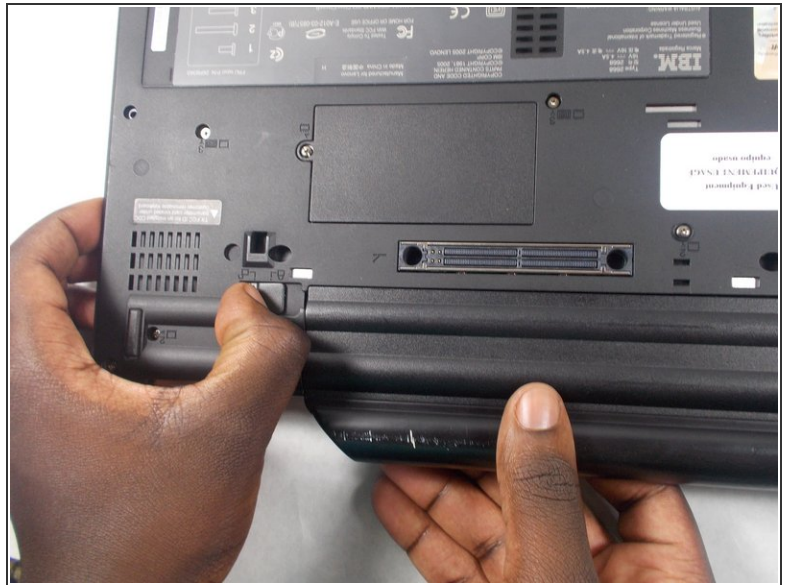
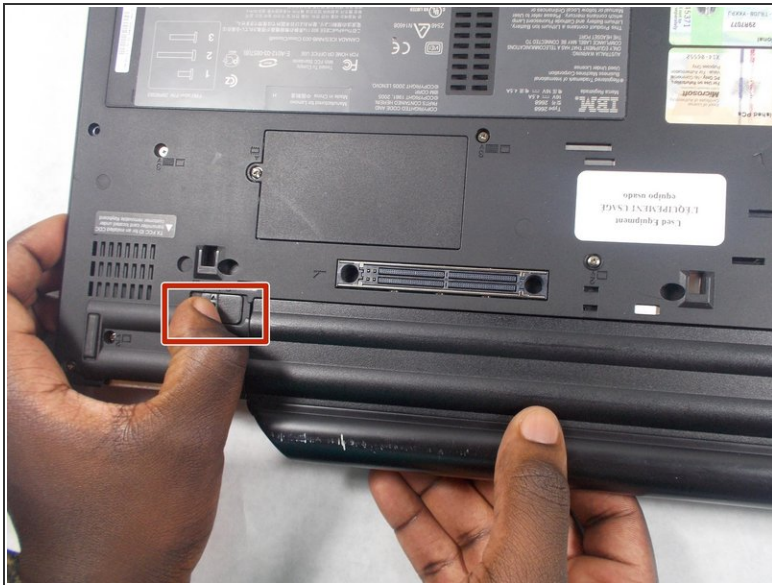
Written By: aLiX pleRRe



INTRODUCTION

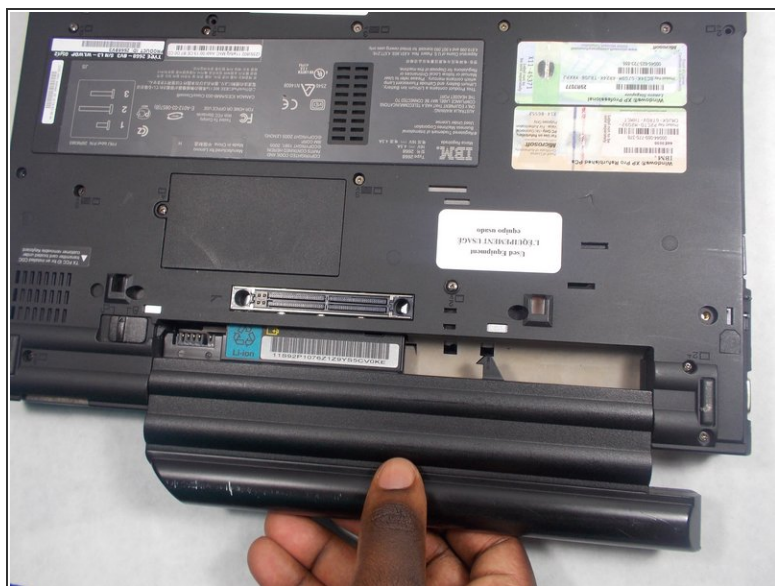
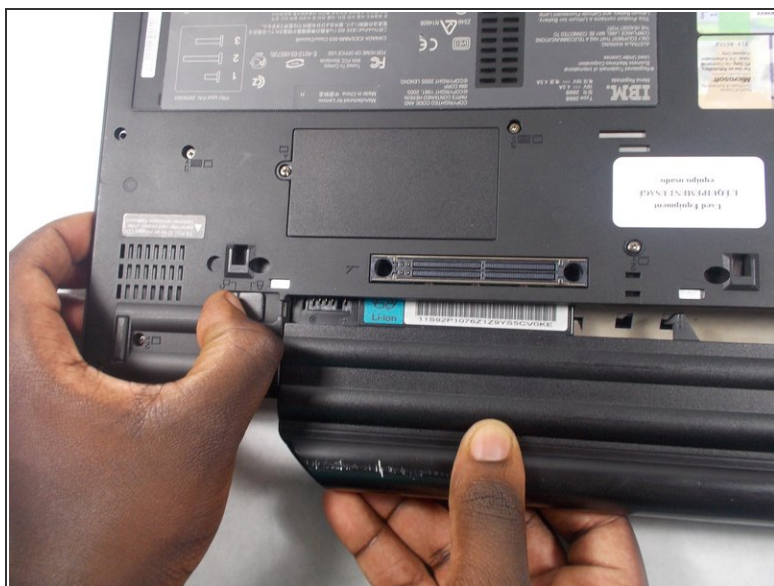
Batteries may lose the ability to hold a complete charge or stop working. This guide will show you how to remove and replace the Battery.

Step 1 — Battery



- Place one hand on the battery and the other on the unlock switch.
- Slide the switch to the left to unlock the battery.
- ⓘ Hold the switch to the left because if you let go, it will lock again.

Step 2



- Gently pull the battery straight out towards your body.
- ❗ Make sure to pull the battery straight out because pulling it at an angle can cause damage.

To reassemble your device, follow these instructions in reverse order.