



Logitech Extreme 3D Pro Base Button Circuit Board Replacement

This guide will assist you to replace the base button board on a Logitech Extreme 3D Pro joystick.

Written By: Emanuel Canela



INTRODUCTION

If one of the six buttons on the base of joystick no longer works, it may be necessary to replace the circuit board.

TOOLS:

- [Phillips #1 Screwdriver](#) (1)
-

Step 1 — Disassembly of the handle



- Remove these three Phillips #1 screws:
 - Two 10mm screws.
 - One 7mm screw.

Step 2



- Using your fingers, lower the rubber boot to reveal two screws underneath the joystick.
- Remove the two 10mm Phillips #1 screws.

Step 3



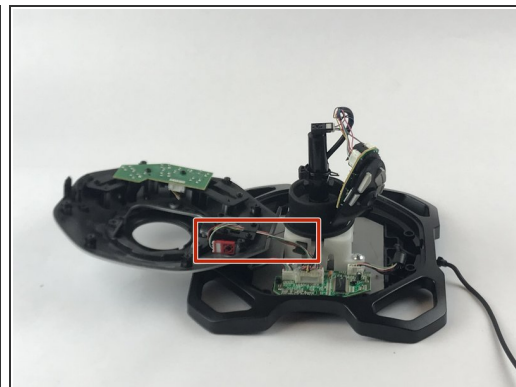
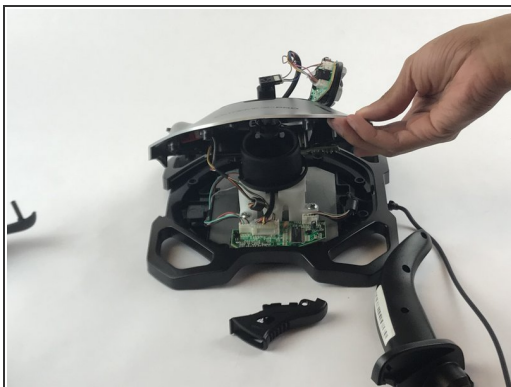
- Pull apart the joystick chassis by hand.
- Release this clip located underneath the hand rest
- ⓘ The circuit board will be loose and may fall down.

Step 4 — Disassembly of the base



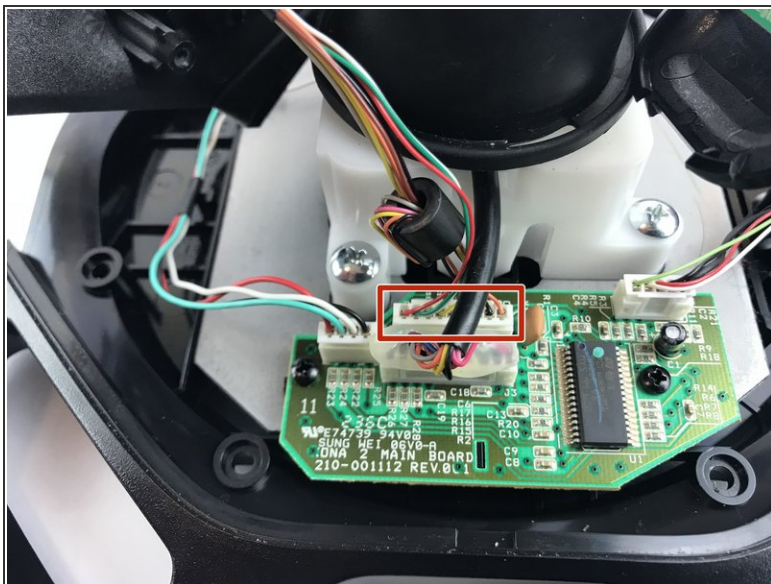
- Remove the eight 10mm Phillips #1 screws from the bottom.

Step 5



- Flip the joystick upright.
 - Lift up the silver base cover and feed the loose circuit board through.
- ⚠ Careful with the wires still attached to the silver base cover from the bottom of the joystick.

Step 6 — Base Button Circuit Board



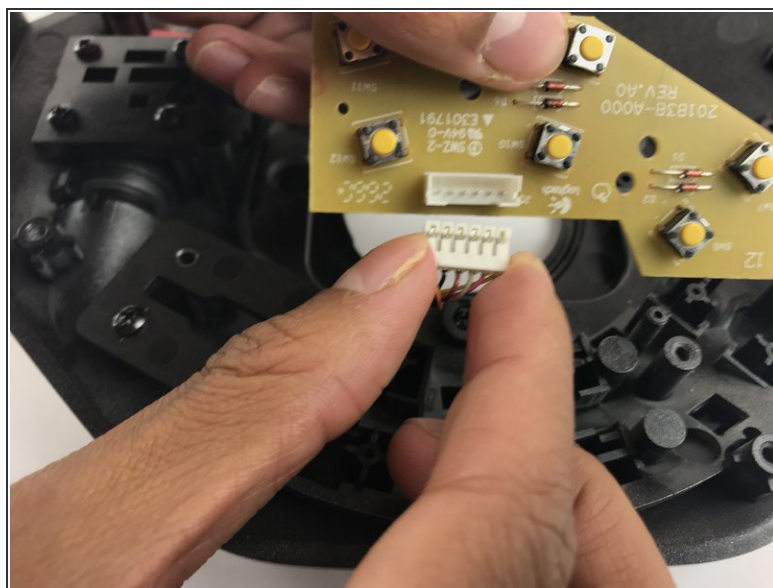
- Remove this wire plug head from this circuit board.
- i** Removing this wire frees the base piece to make working on it easier.

Step 7



- Remove the two 10mm Phillips #1 screws from the button board.

Step 8



- Lift up the button board.
- Disconnect the button board.

To reassemble your device, follow these instructions in reverse order.