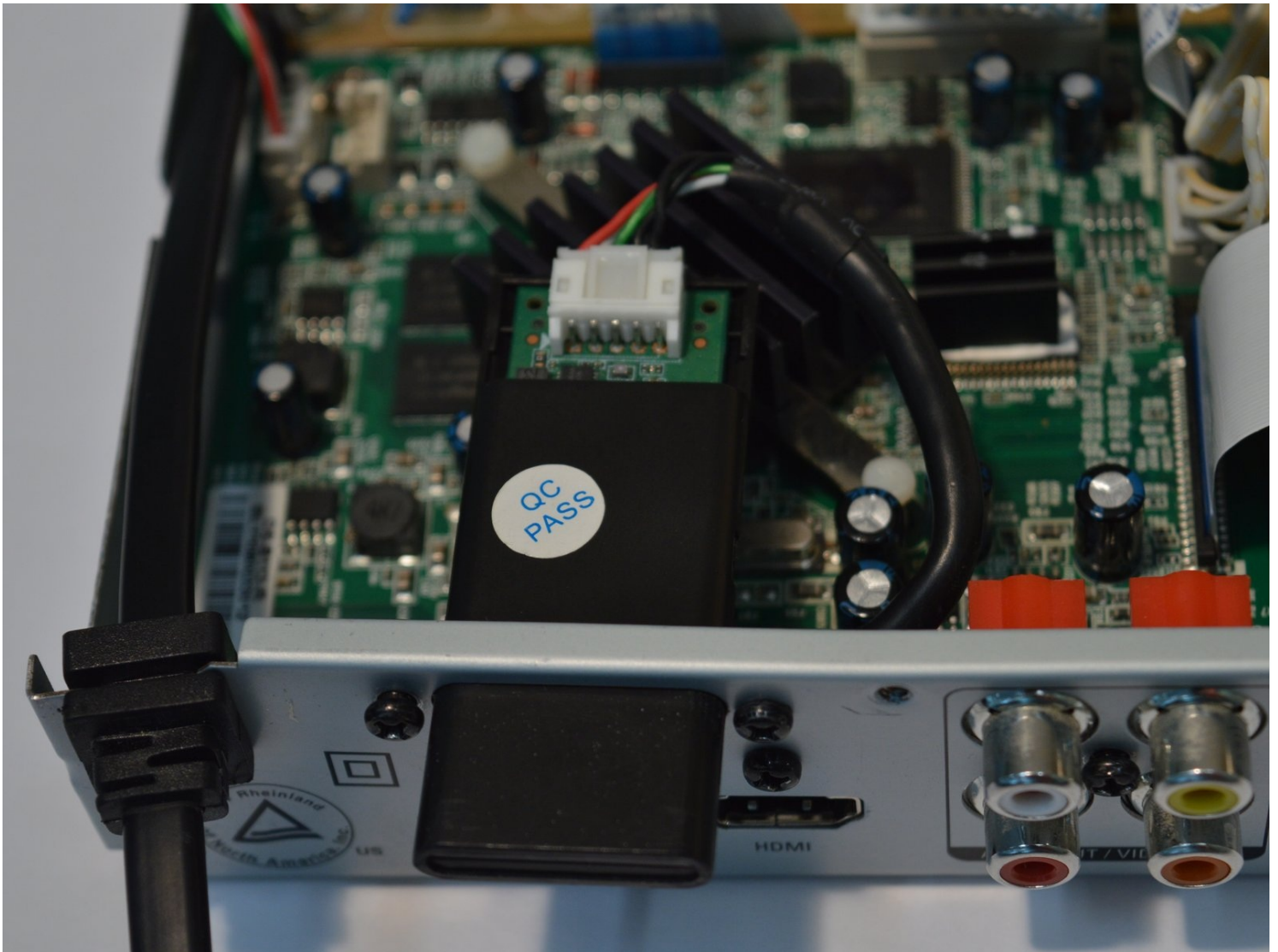




# Dynex DX-WBRDVD1 WiFi Antenna Replacement

The WiFi antenna is found on the back left of...

Written By: josh sorenson



# INTRODUCTION

The WiFi antenna is found on the back left of the device. It is black and extends an inch outside of the device. This guide will take you through the steps of removing the cover and antenna. The antenna must be removed to perform maintenance on the motherboard of this device.

---

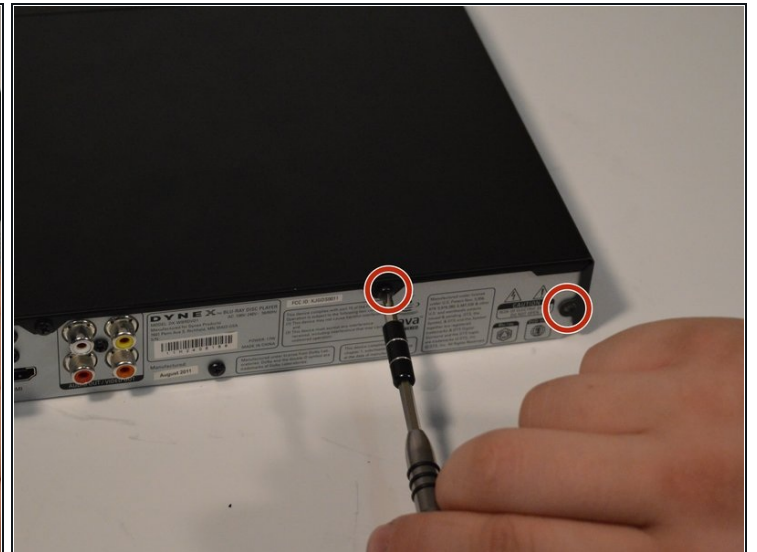
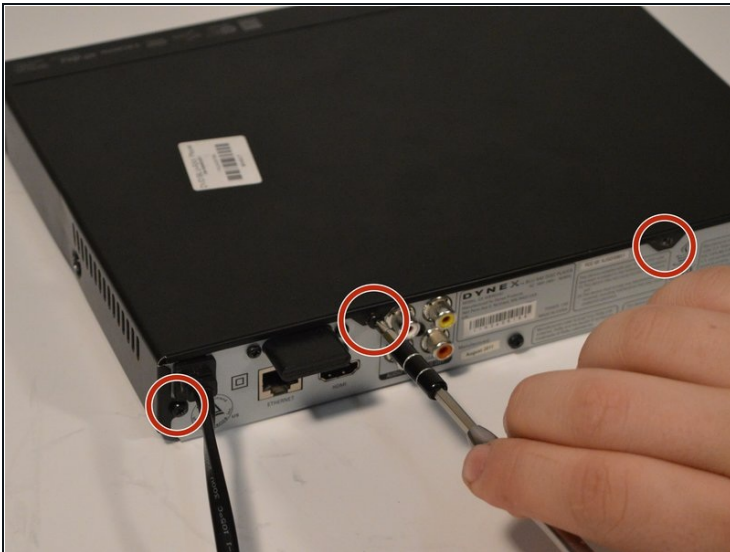
## TOOLS:

Phillips #1 Screwdriver (1)

Spudger (1)

---

### Step 1 — Top Cover



- Remove the four 5mm Phillips #1 screws that connect the black outer shell to the silver back of the device.

## Step 2



- Remove the two 5mm screws on the left and right side panels.
- ① There is one screw on each side that secures the cover to the body of the device.

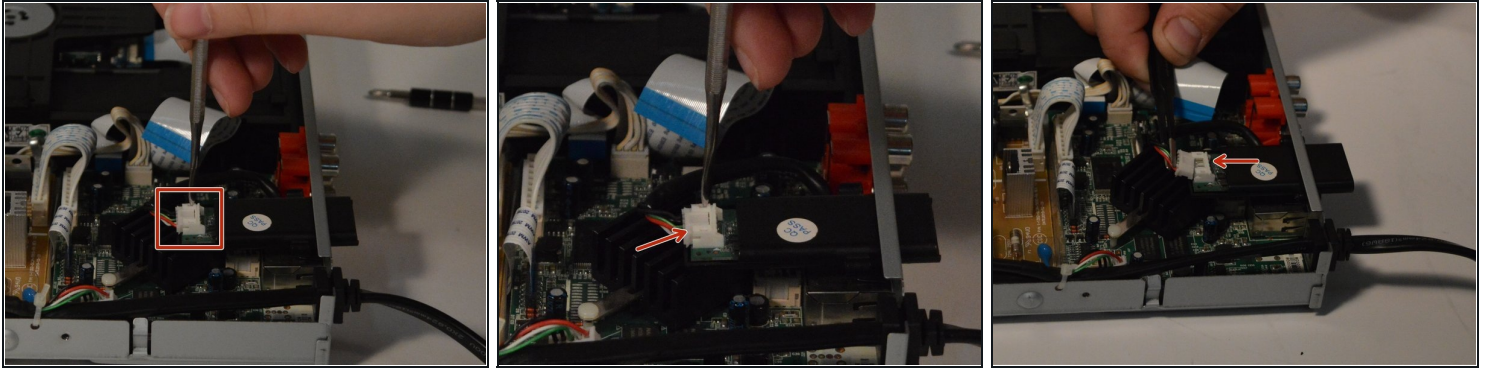
## Step 3



- Lift the black cover to a 45 degree angle from the rear of the device and pull the cover away entirely.
- ⚠ Check that the power cord is not preventing the device from opening or closing.

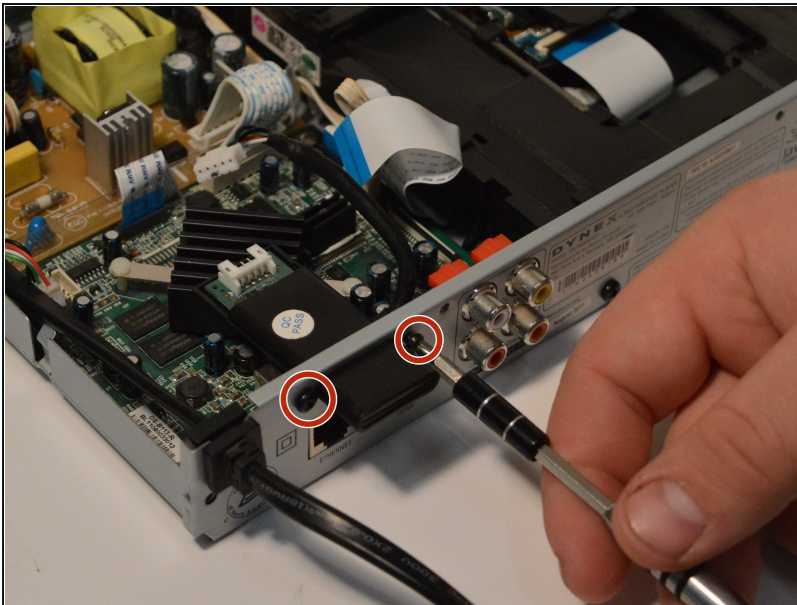


## Step 4 — WiFi Antenna



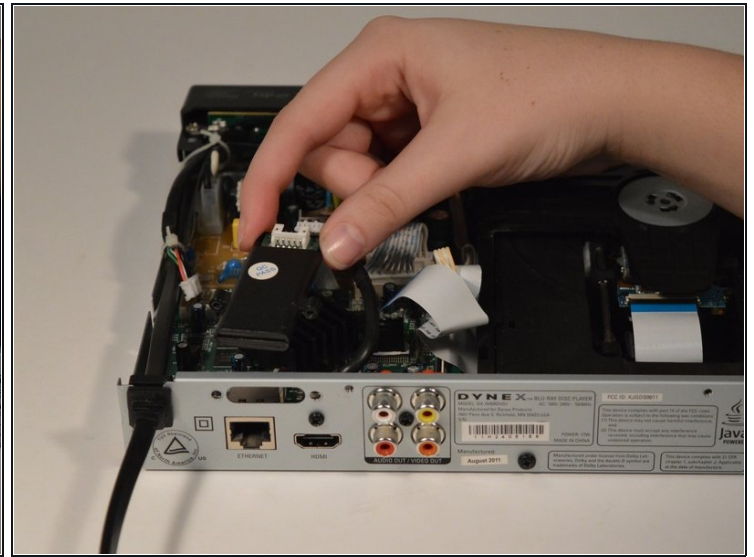
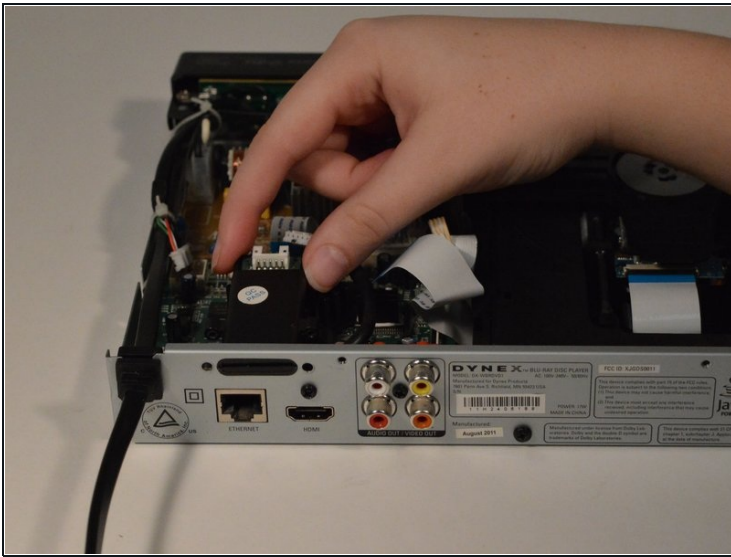
- Use the metal spudger to remove the white clip from the antenna by prying the clip away from the antenna.
- ① Use a pointed tool and press down on the indents on both sides of the clip to loosen.

## Step 5



- Remove the two 7mm screws from both sides of the antenna.

## Step 6



- Slide the antenna inwards and gently remove.

To reassemble your device, follow these instructions in reverse order.