



# Dell Alienware M18x R2 Hard Drive Replacement

Written By: Terrence15



---

## INTRODUCTION

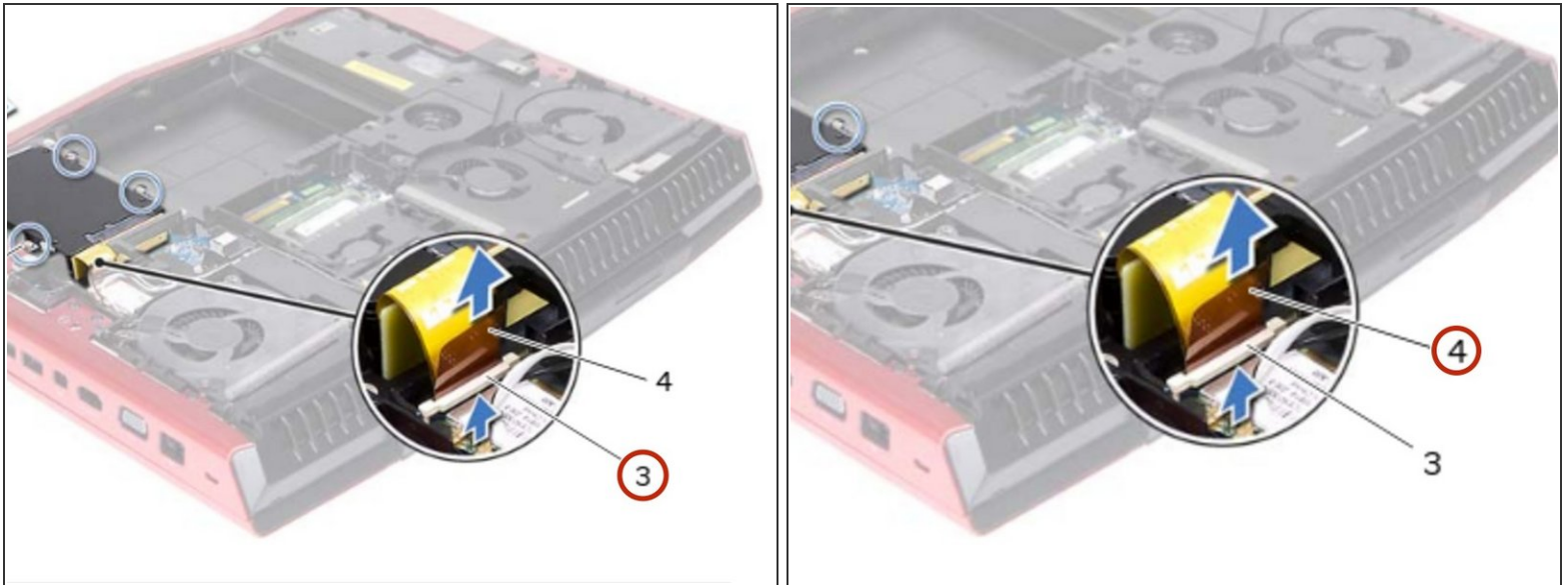
In this guide, we will show you how to remove and replace the Hard Drive.



### TOOLS:

- [Phillips #0 Screwdriver](#) (1)
-

## Step 1 — Lifting the Connector Latch

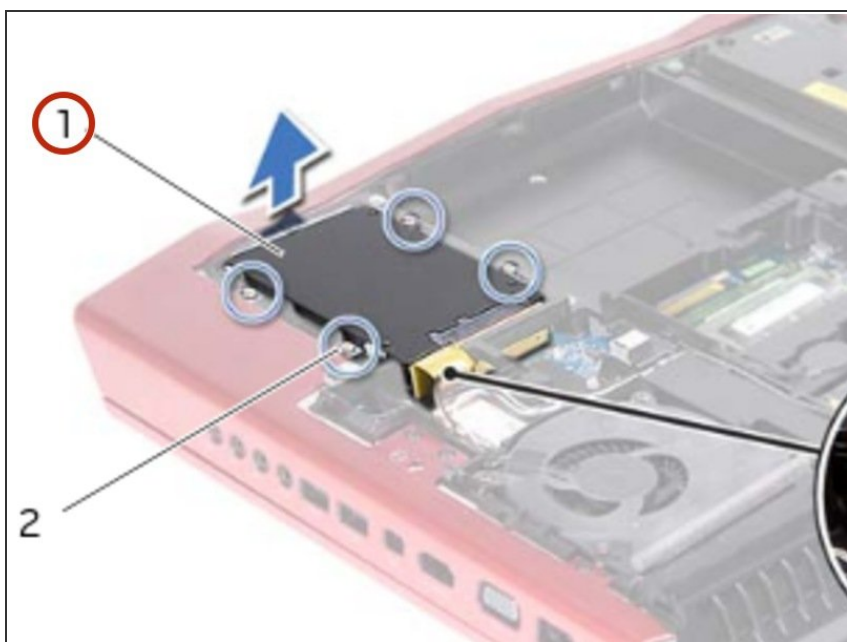


**⚠ WARNING:** Before working inside your computer, read the safety information that shipped with your computer and follow the steps in [Before You Begin](#).

**⚠ CAUTION:** Hard drives are extremely fragile. Exercise care when handling the hard drive

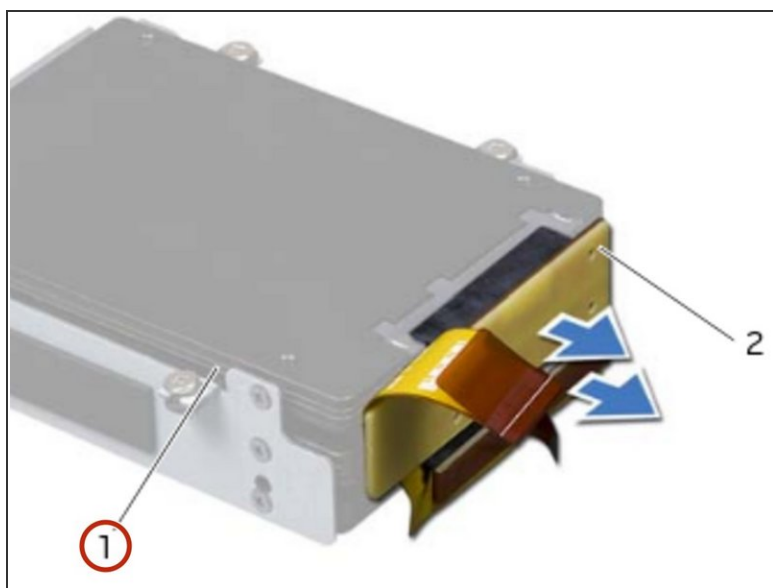
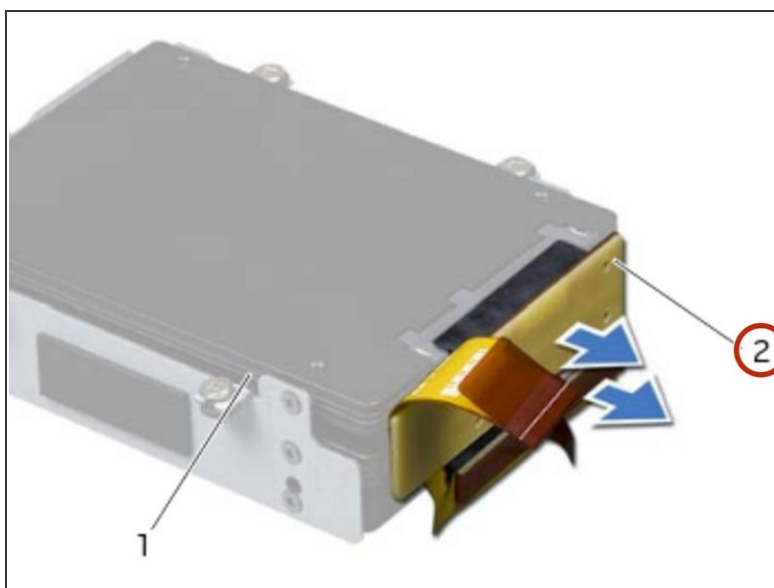
- Lift the connector latch that secures the hard-drive cable to the connector on the system board, and then disconnect the hard-drive cable from the connector on the system board.

## Step 2 — Lifting the Hard-Drive Assembly



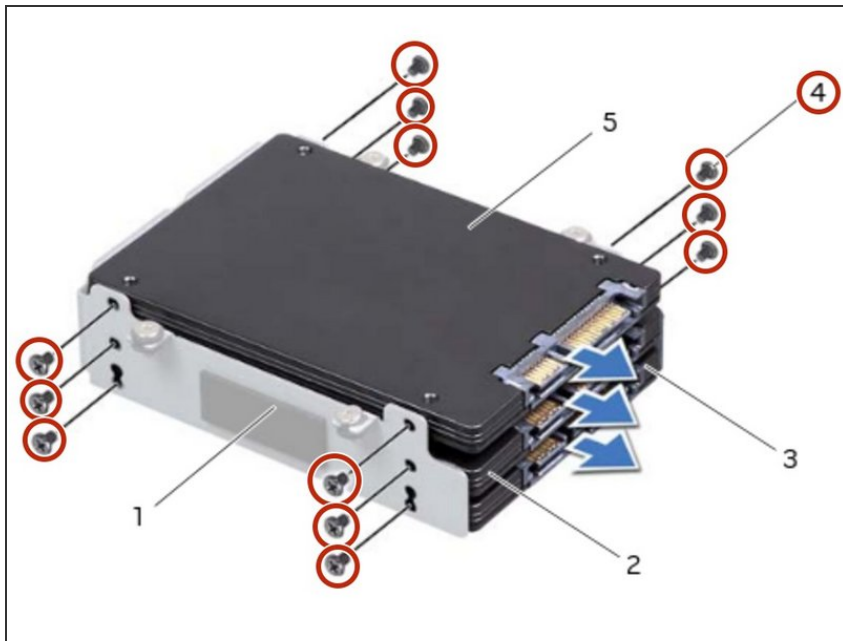
- Using the pull-tab, lift the hard-drive assembly out of the computer base.

## Step 3 — Disconnecting the Interposer



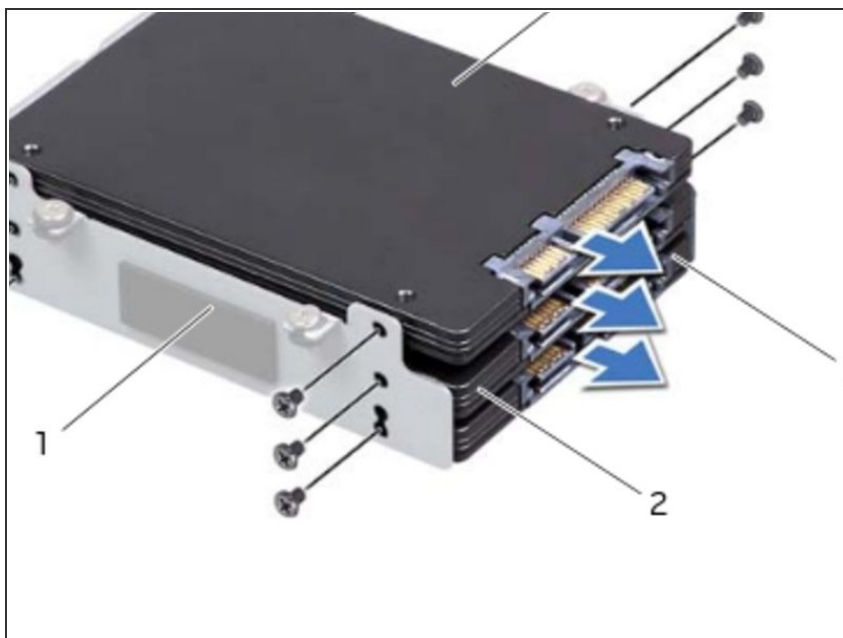
- Disconnect the interposer from the hard drives.

## Step 4 — Remove the Screws



- Remove the screws that secure the hard drive(s) and slide the hard drive(s) out of the hard-drive bracket.

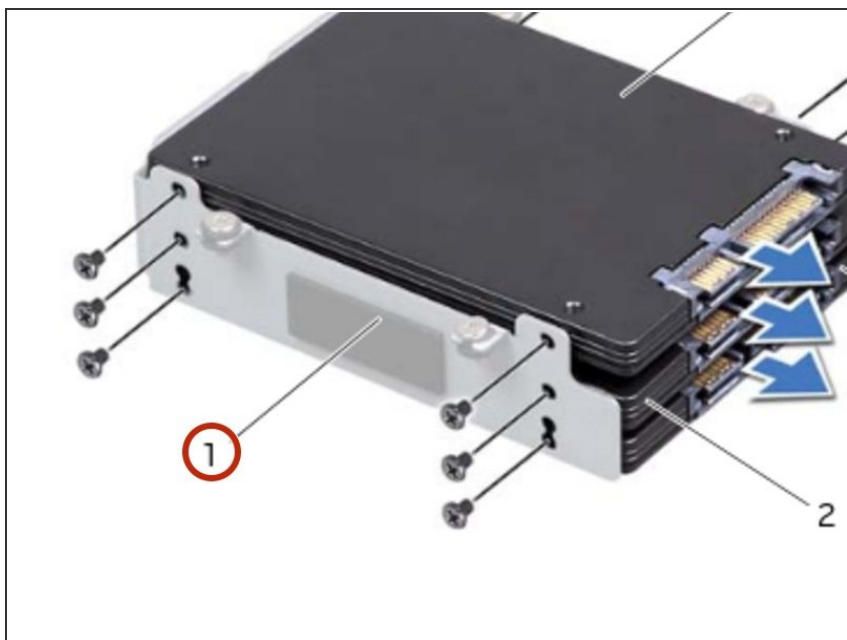
## Step 5 — Placing the Hard Drive



- Place the **NEW** primary hard drive (HDD 0) in the hard-drive bracket.

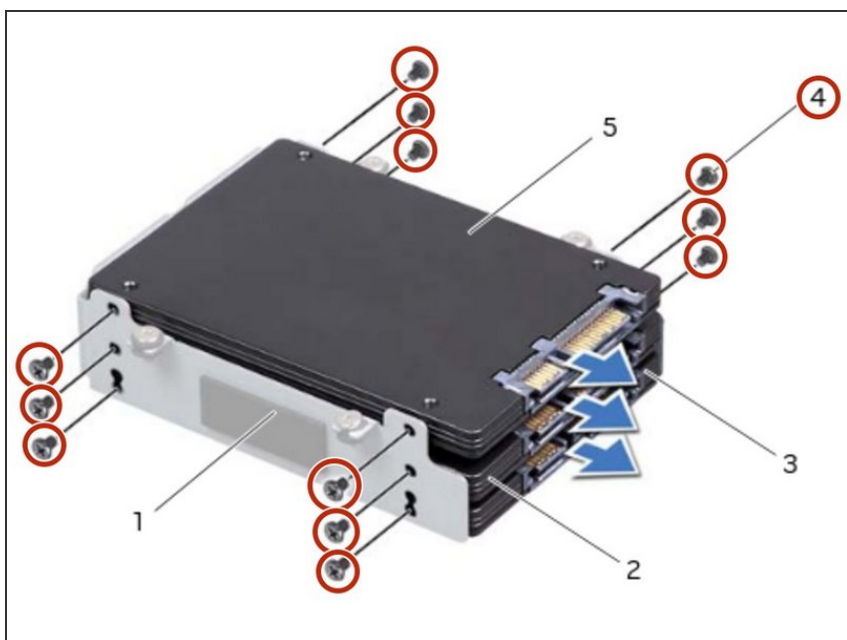


## Step 6 — Sliding the Hard Drives



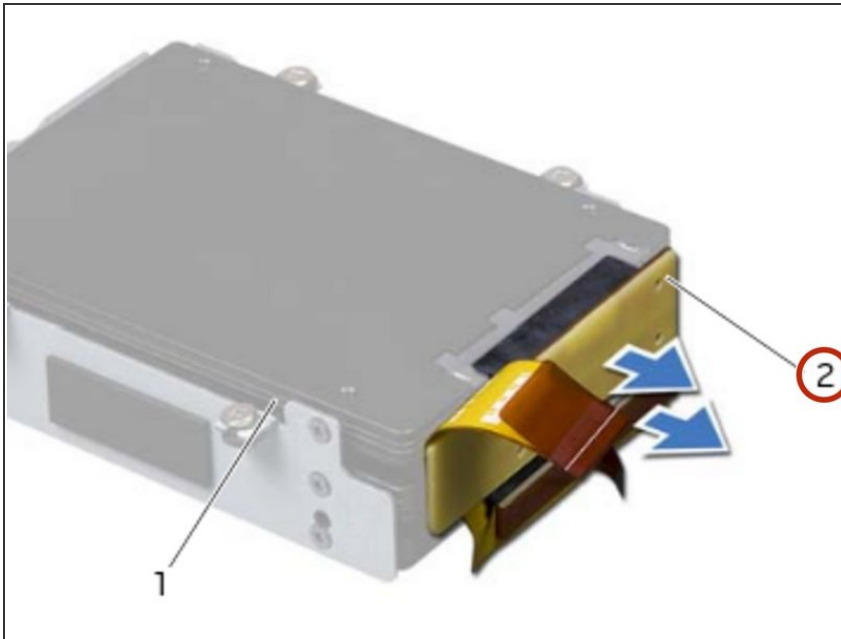
- If applicable, slide the secondary and tertiary hard drive(s) into the hard-drive bracket.

## Step 7 — Replace the Screws



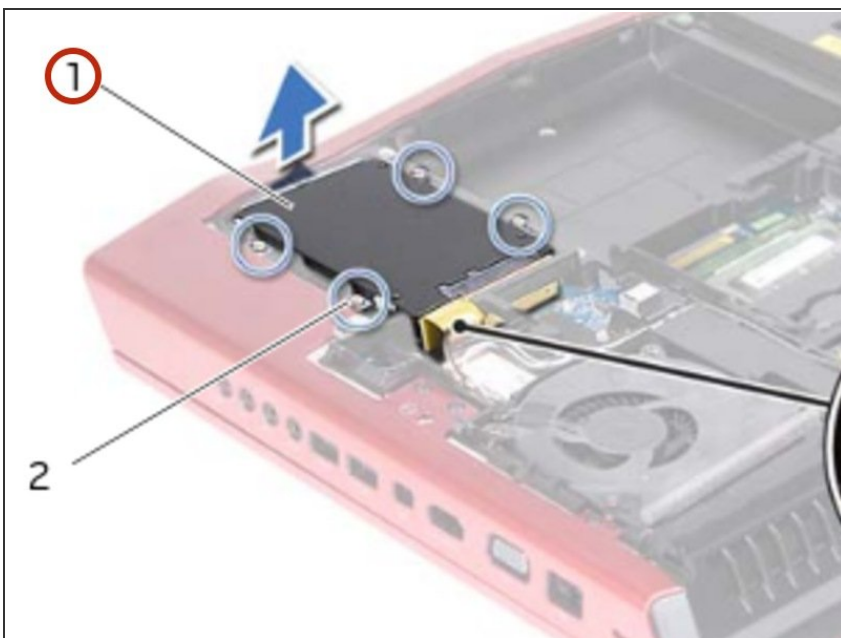
- Replace the screws that secure the primary hard drive (HDD 0).

## Step 8 — Connecting the Interposer



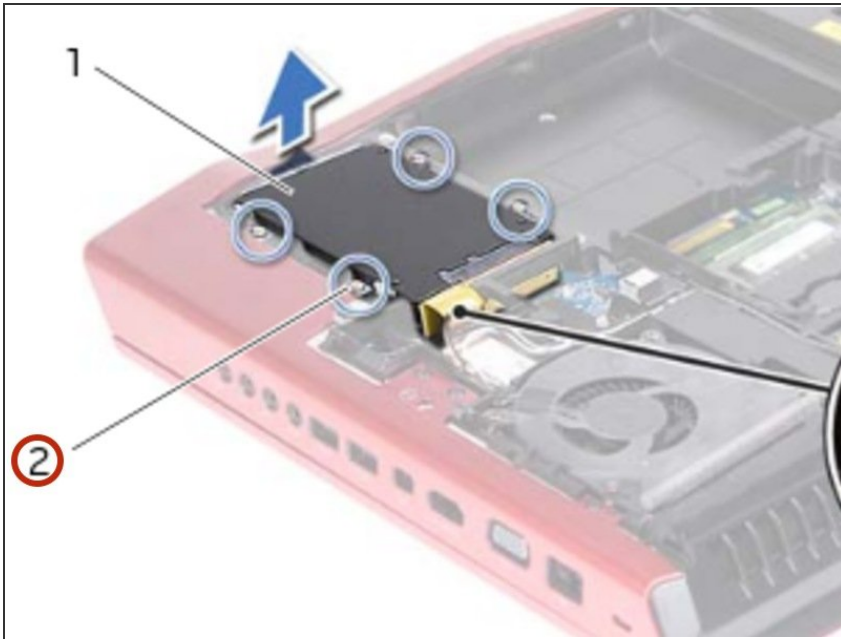
- If applicable, replace the screws that secure the secondary hard drive (HDD 1) and tertiary hard drive (HDD 2) to the hard-drive bracket.
- Connect the interposer to the hard drive(s).

## Step 9 — Placing the Hard-Drive Assembly



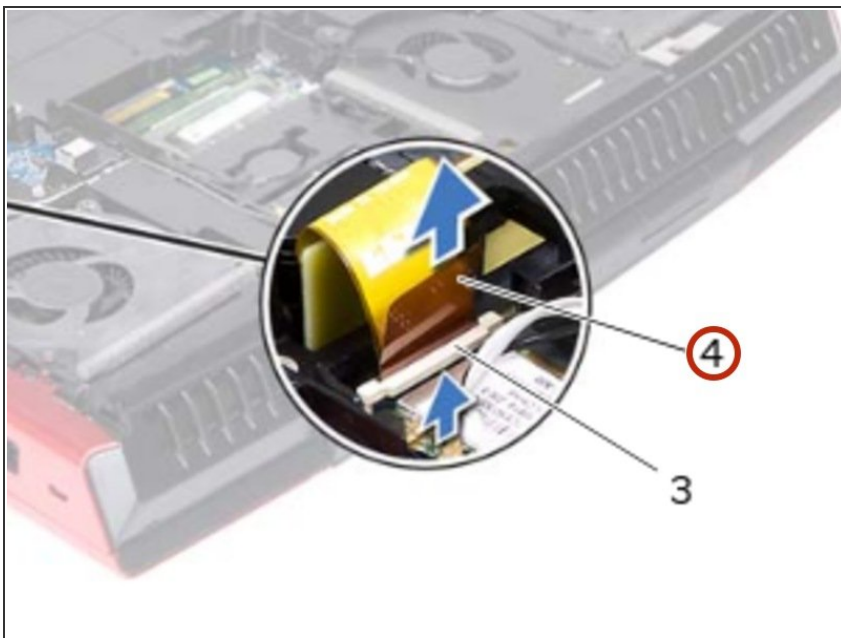
- Place the hard-drive assembly in the computer base.

## Step 10 — Tighten the Captive Screws



- Tighten the captive screws that secure the hard-drive assembly to the computer base.

## Step 11 — Sliding the Hard-Drive Cable



- Slide the hard-drive cable into the connector on the system board and press down on the connector latch to secure the cable.

To reassemble your device, follow these instructions in reverse order.