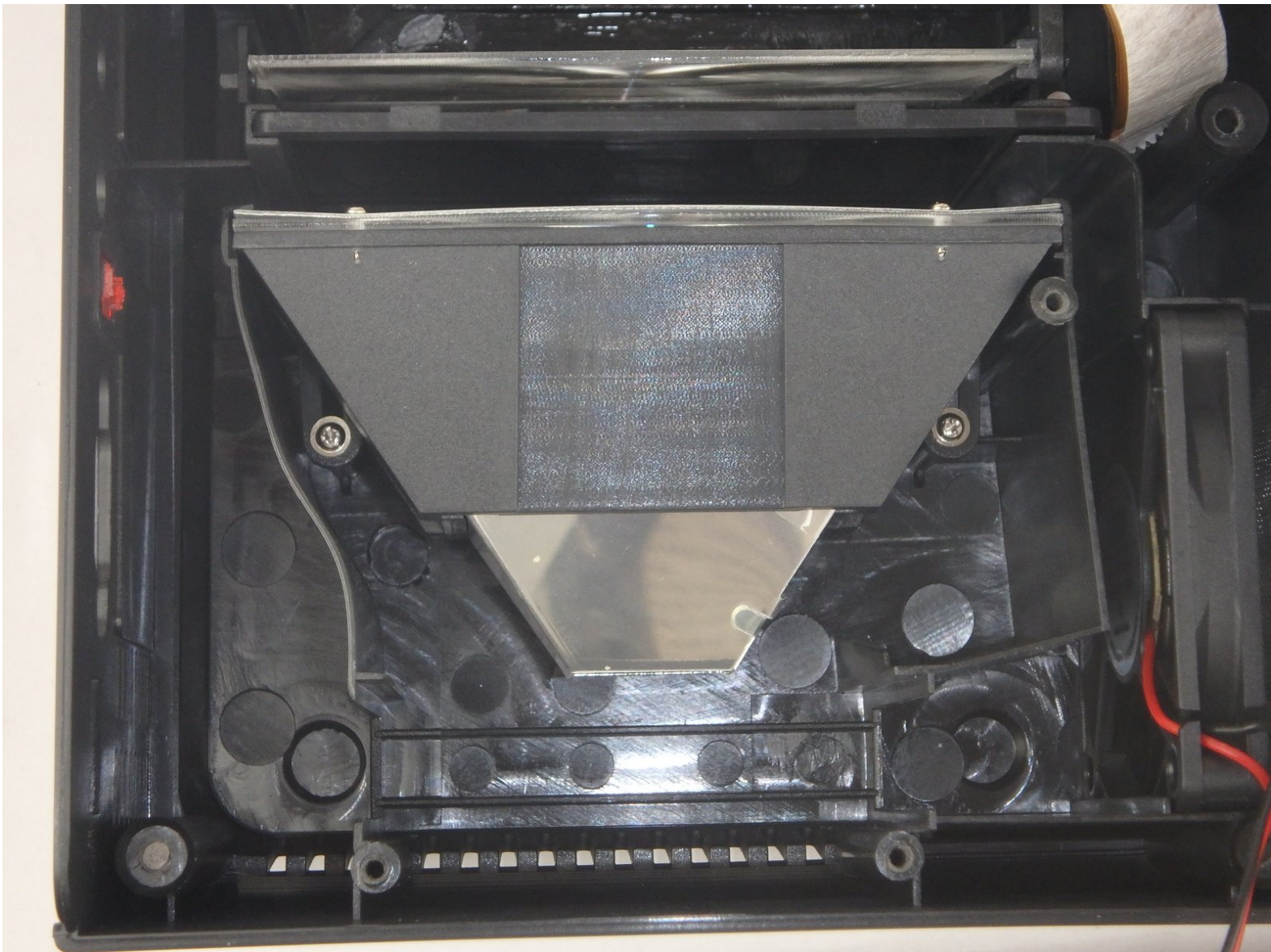




DBPOWER RD-810 Magnifier Replacement

Replace the Magnifier.

Written By: John Russell



INTRODUCTION

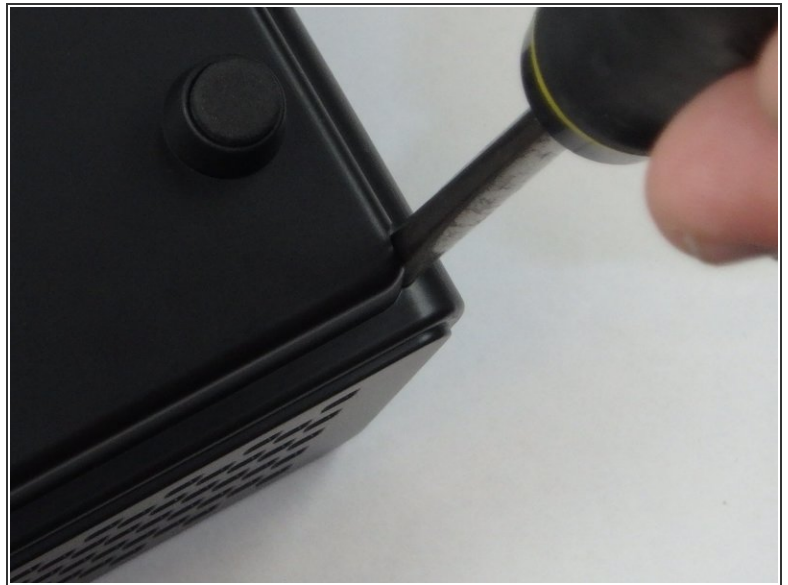
The Magnifier amplifies the light from the LED bulb before it passes through the imager. Removing it allows better access to the imager and the LED bulb.



TOOLS:

- [Phillips #2 Screwdriver](#) (1)
 - [Phillips #3 Screwdriver](#) (1)
-

Step 1 — Top Cover



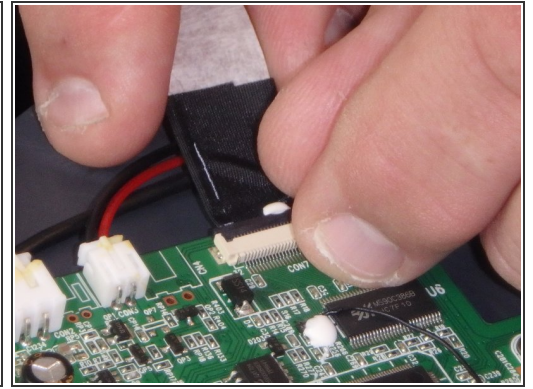
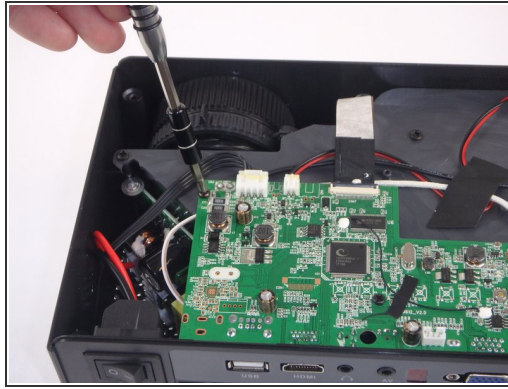
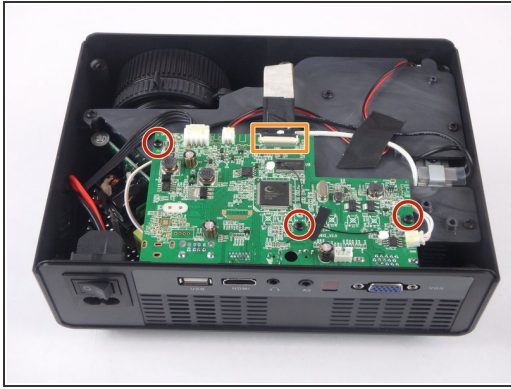
- ❗ Make sure the projector is unplugged before starting
- Place the projector upside down to access the screws on the bottom.
- Remove the five 7mm long screws using a #3 Phillips screwdriver at least 2 inches long.

Step 2



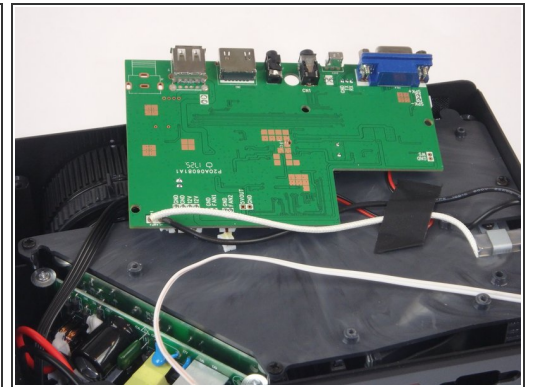
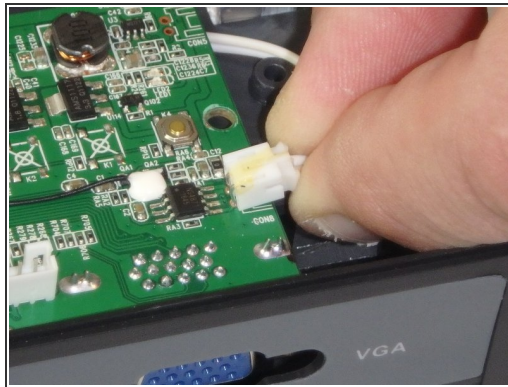
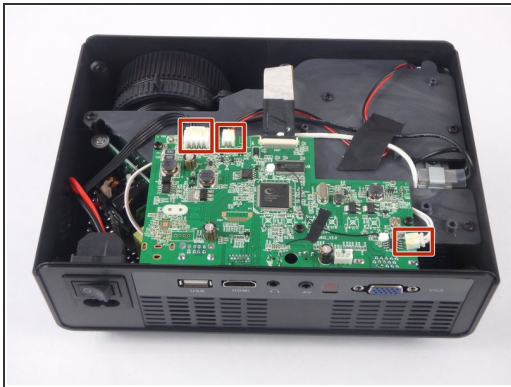
- Flip the projector over and then remove the cover by lifting it up.

Step 3 — Motherboard and LED Bulb



- Remove the three 6mm PH2 phillips head screws.
- Disconnect the ribbon cable by flipping up the latch on the connector and then pull the ribbon out.

Step 4



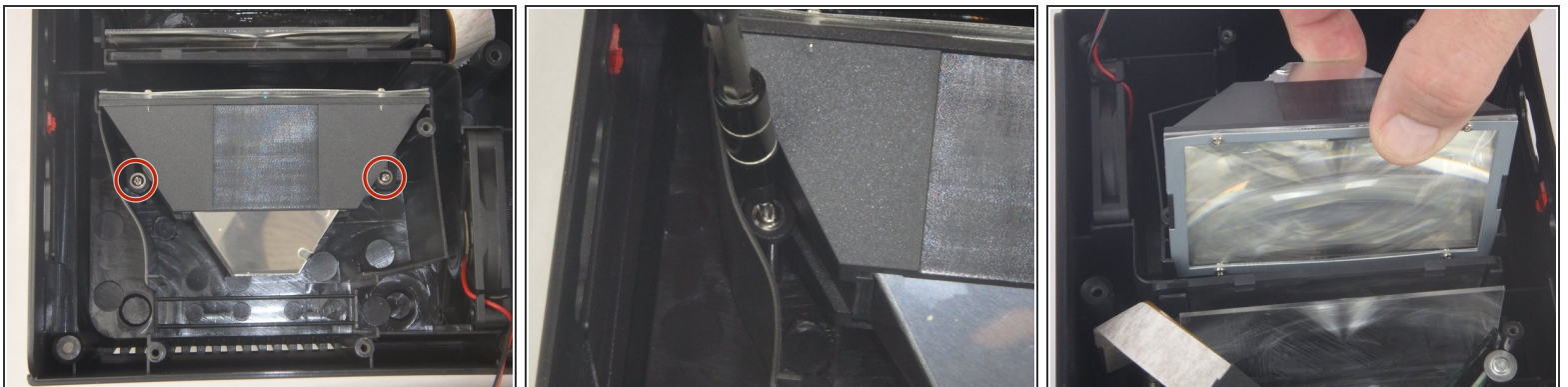
- Disconnect the three wire connectors. Grasp both sides of the connector and pull apart.
- ⓘ Keep the connector parallel to the mother board to avoid breaking the solder connection.
- Lift the motherboard up and place it out of the way.

Step 5



- Remove the five 7mm PH2 phillips head screws on the black plate and lift the plate out.
- Lift the aluminum heat sink up to remove it from the projector.
- ⓘ The motherboard is already removed in this step.

Step 6 — Magnifier



- Remove the two 9mm PH2 phillips head screws.
- Lift the Magnifier out of the projector.

To reassemble your device, follow these instructions in reverse order.