



Zoom H6 Handy Recorder Battery Terminal Replacement

This guide explains how to remove both sets of battery terminals; two on the bottom of the device, and the others directly connected to the motherboard

Written By: Rachel Calder



INTRODUCTION

The only requirements for this replacement guide are the right tools, new battery terminals, and device ready before starting the guide. Terminals should be replaced when the device stops powering on despite the replacement of new batteries or due to the corrosion of terminals.

TOOLS:

- [Spudger](#) (1)
 - [iFixit Opening Tool](#) (1)
 - [Tweezers](#) (1)
 - [Soldering Iron](#) (1)
-

Step 1 — Battery Terminal



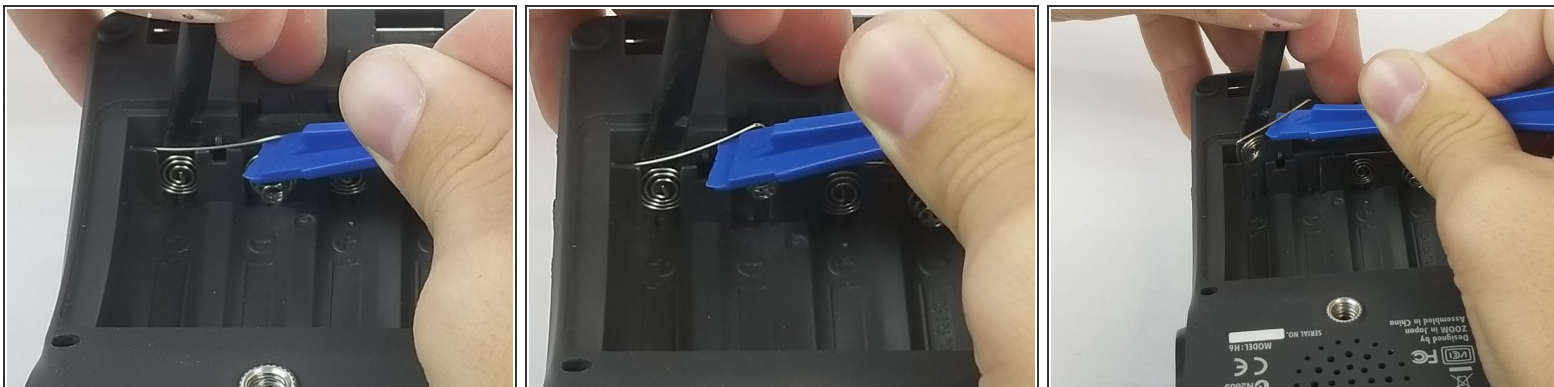
- Place device on table facing down.
- Remove the battery cover, with index finger press protruding tab towards "OPEN".

Step 2



- If batteries are present, remove them in order to reveal the terminals at the bottom of the device.

Step 3



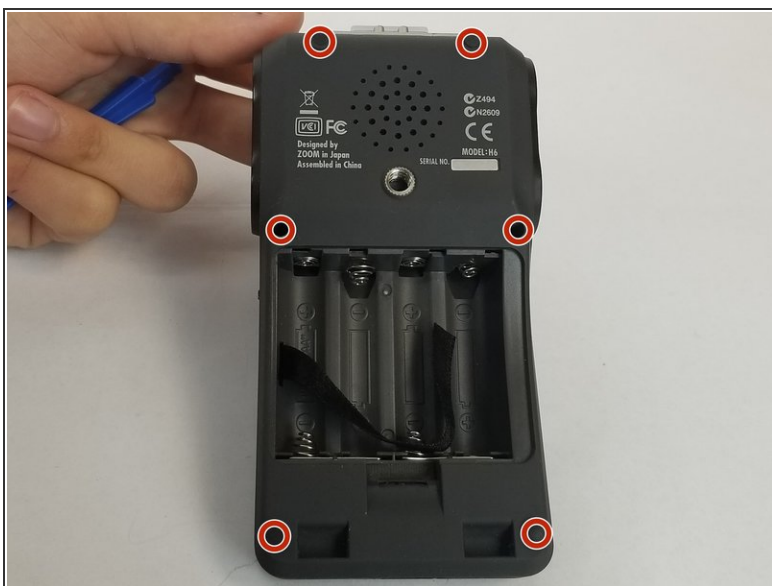
- With the flat end of the black plastic spudger, pry the terminal away from the case.
- Use the small blue plastic opening tool to lift the terminal out of the device. Repeat for the adjacent terminal.
- ⓘ When lifting the terminal out, the metal wire of the terminal must move past the plastic protrusion that keeps the battery terminal in place.

Step 4



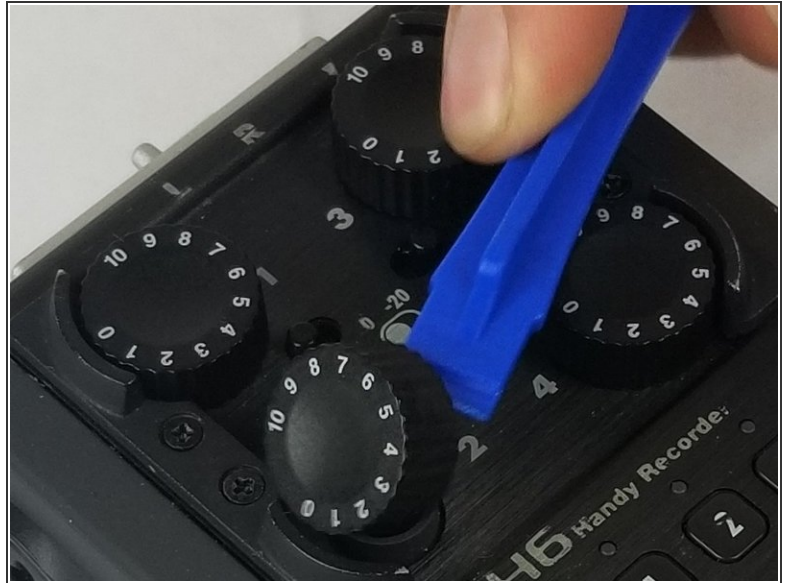
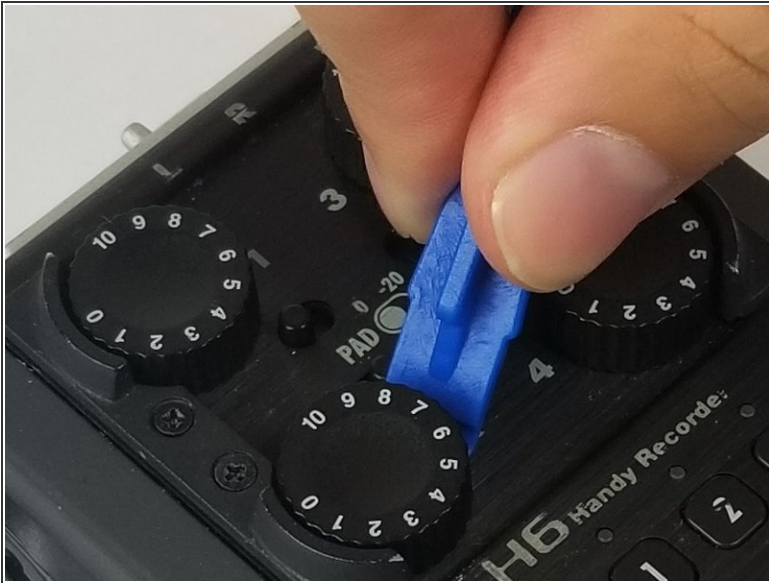
- Remove four rubber feet using fingernails to access the four screws underneath.

Step 5



- For the terminals directly connected to the motherboard, unscrew eight (PH #1), 9 mm screws (two located on the top back side, two in the center of back side of device right above the battery cover, and four under the rubber feet).
- ⓘ An electronics screwdriver narrow enough to fit in hole (3.5mm diameter), but long enough to reach the screws (at least 2cm) will be required to unscrew the two screws in the center of back side of the device.

Step 6



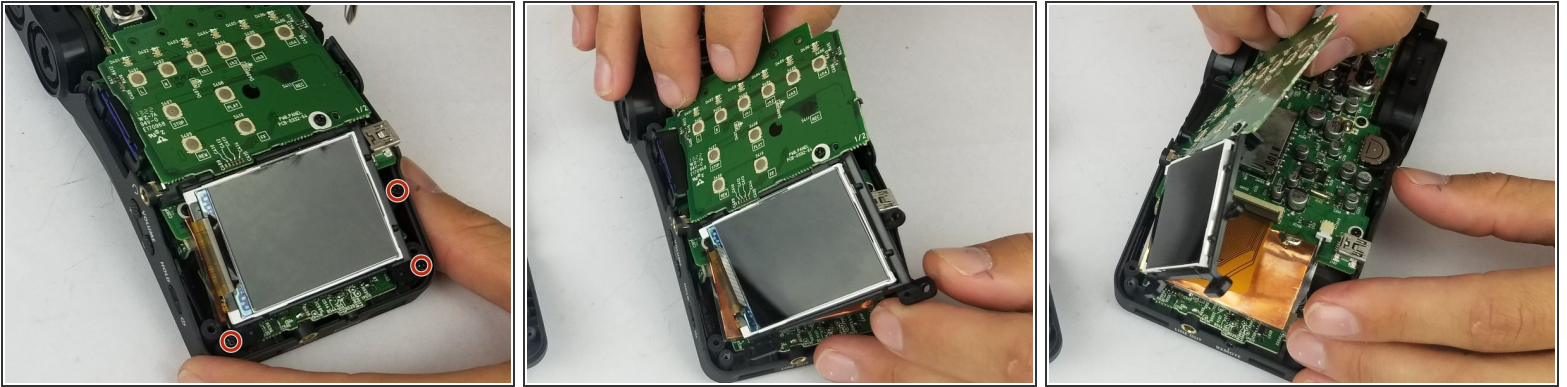
- Place device face up and remove the four knobs using the flat end of the plastic opening tool.

Step 7



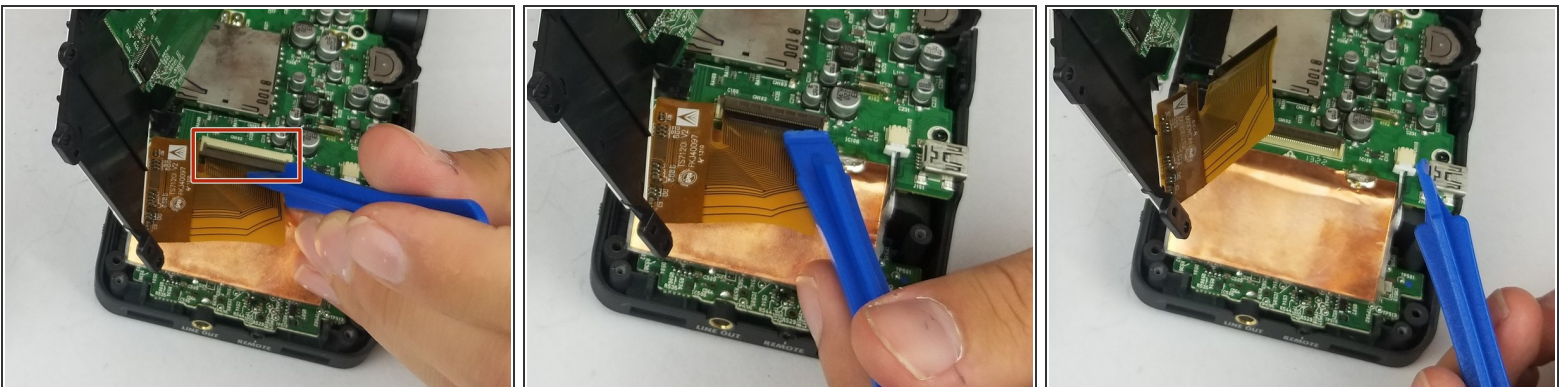
- Carefully lift up the top of the device and gently set aside.

Step 8



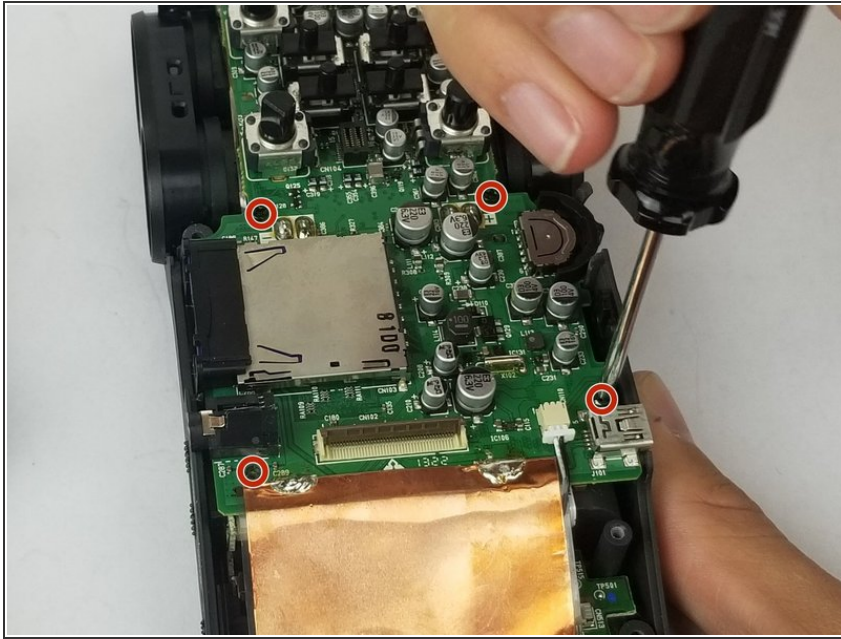
- Unscrew three (PH #1), 7mm screws from the button board near the display and gently flip over.

Step 9



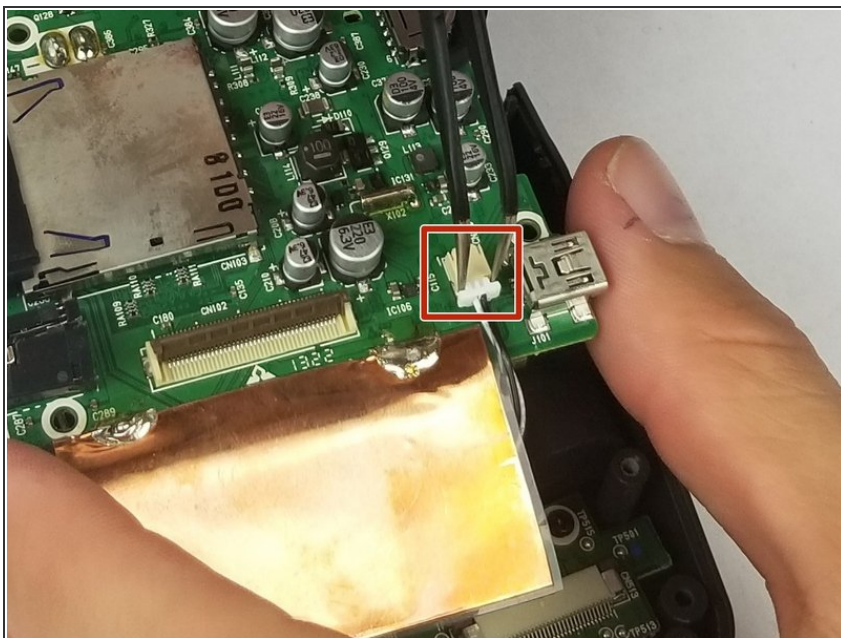
- Using a plastic opening tool, unlatch the clip and carefully unplug the ribbon connector from the device.
- Set the button board aside.

Step 10



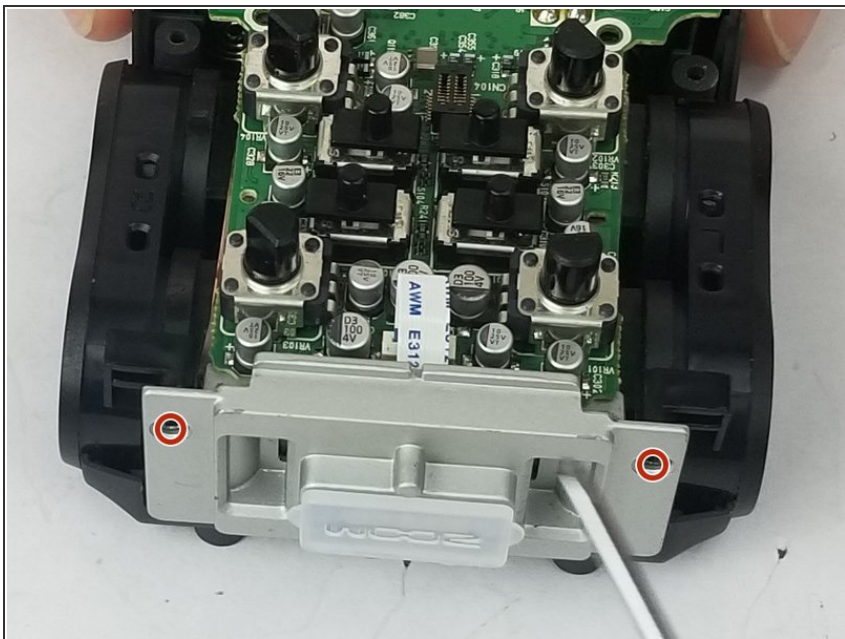
- Unscrew four (PH #1), 8mm screws from the motherboard.

Step 11



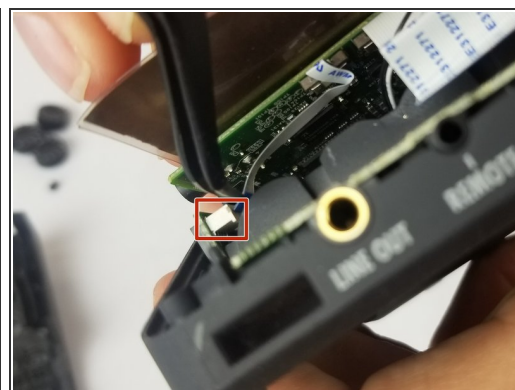
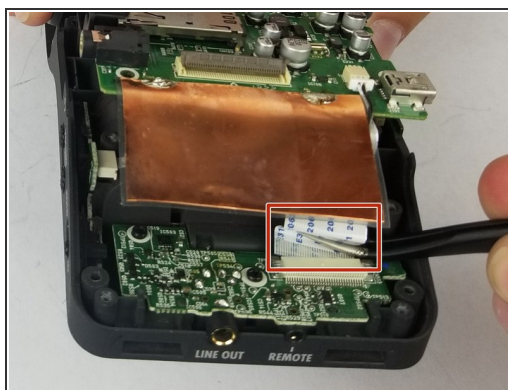
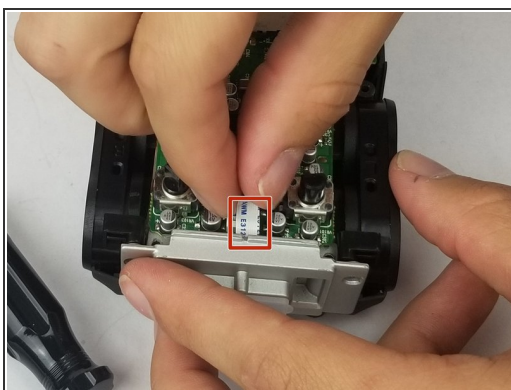
- Disconnect wire from motherboard using tweezers.
- ⚠ Do not touch the motherboard with metal tweezers. Only touch the plastic part of the plugged-in wire.

Step 12



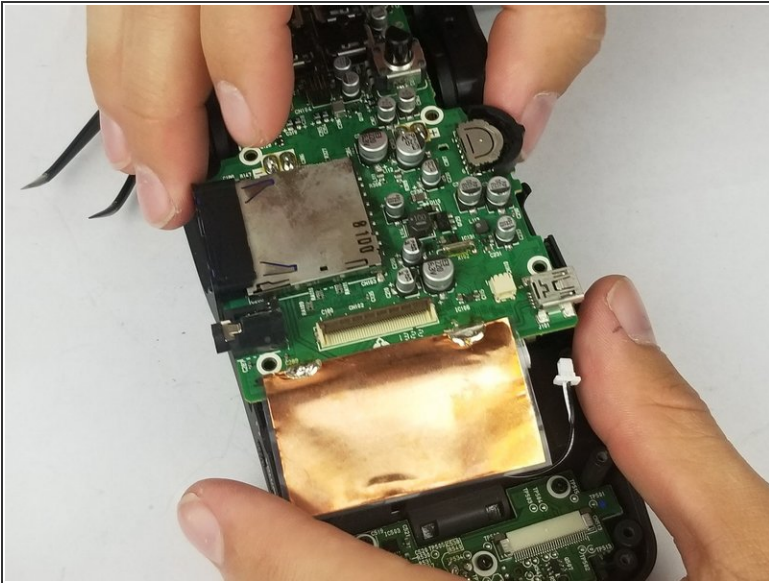
- Turn device 180 degrees to unscrew two (PH #1), 8mm screws from the mic connector.

Step 13



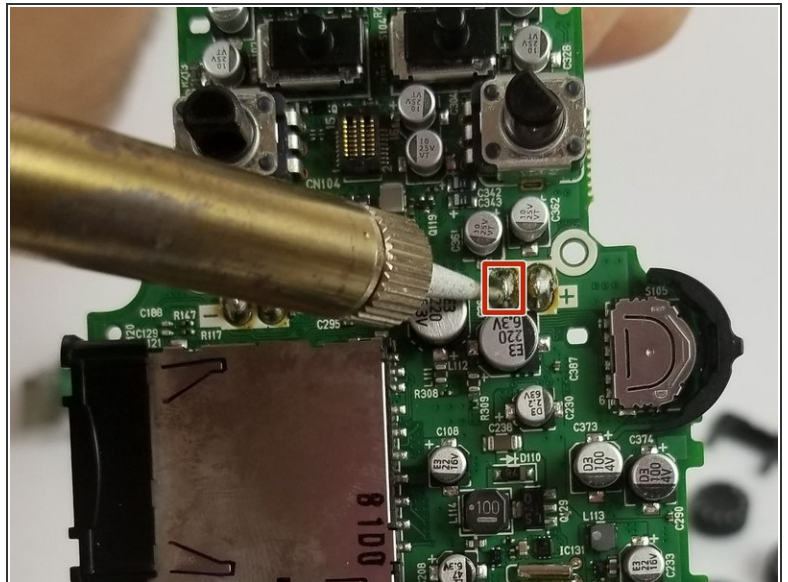
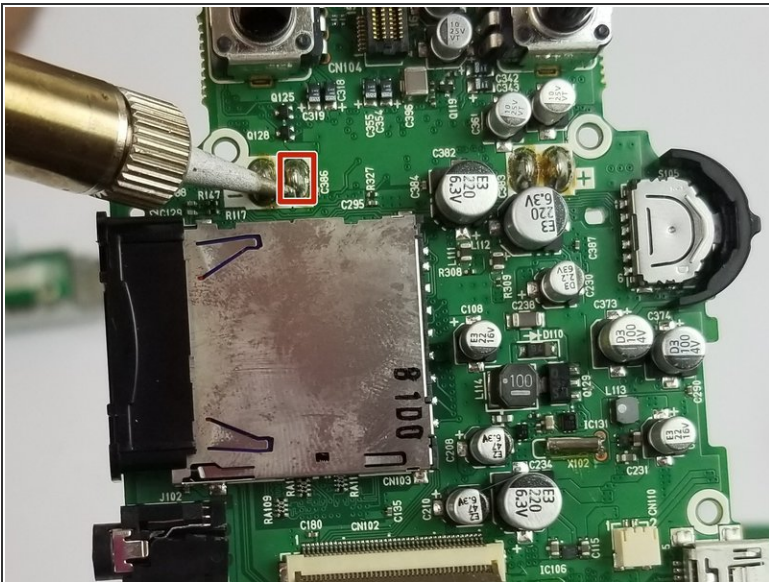
- Gently remove three ribbon connectors from the base of the device. One is connected to the mic connector, the other two are on the top of the device next to the "LINE OUT" plug-in (directly behind the device display screen).
- ⓘ Use tweezers to remove the two ribbon connectors behind the display screen because it is difficult to remove them only using hands.
- ⚠ Avoid touching anything but the ribbon connectors with the metal tweezers.

Step 14



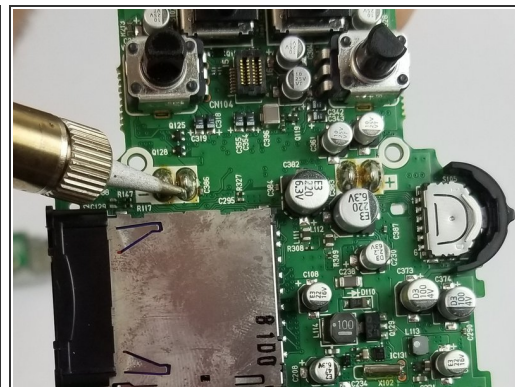
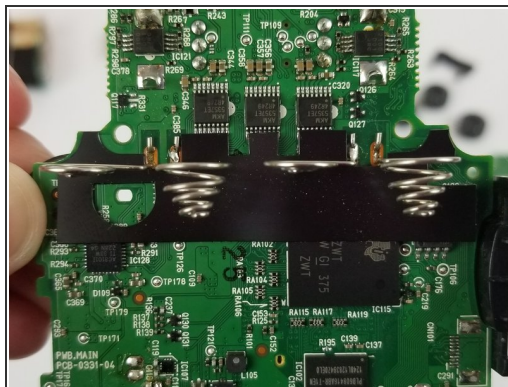
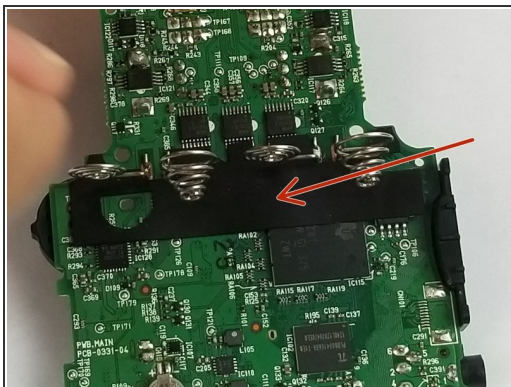
- Gently lift off motherboard from the base of the device.

Step 15



- Taking care not to damage other components on the motherboard, use a soldering iron to undo the soldering that holds the terminals to the motherboard.

Step 16



- Flip motherboard over and remove the black tape covering the battery terminal.
- Replace with new terminal.
- Resolder the terminals to the motherboard.

To reassemble your device, follow these instructions in reverse order.