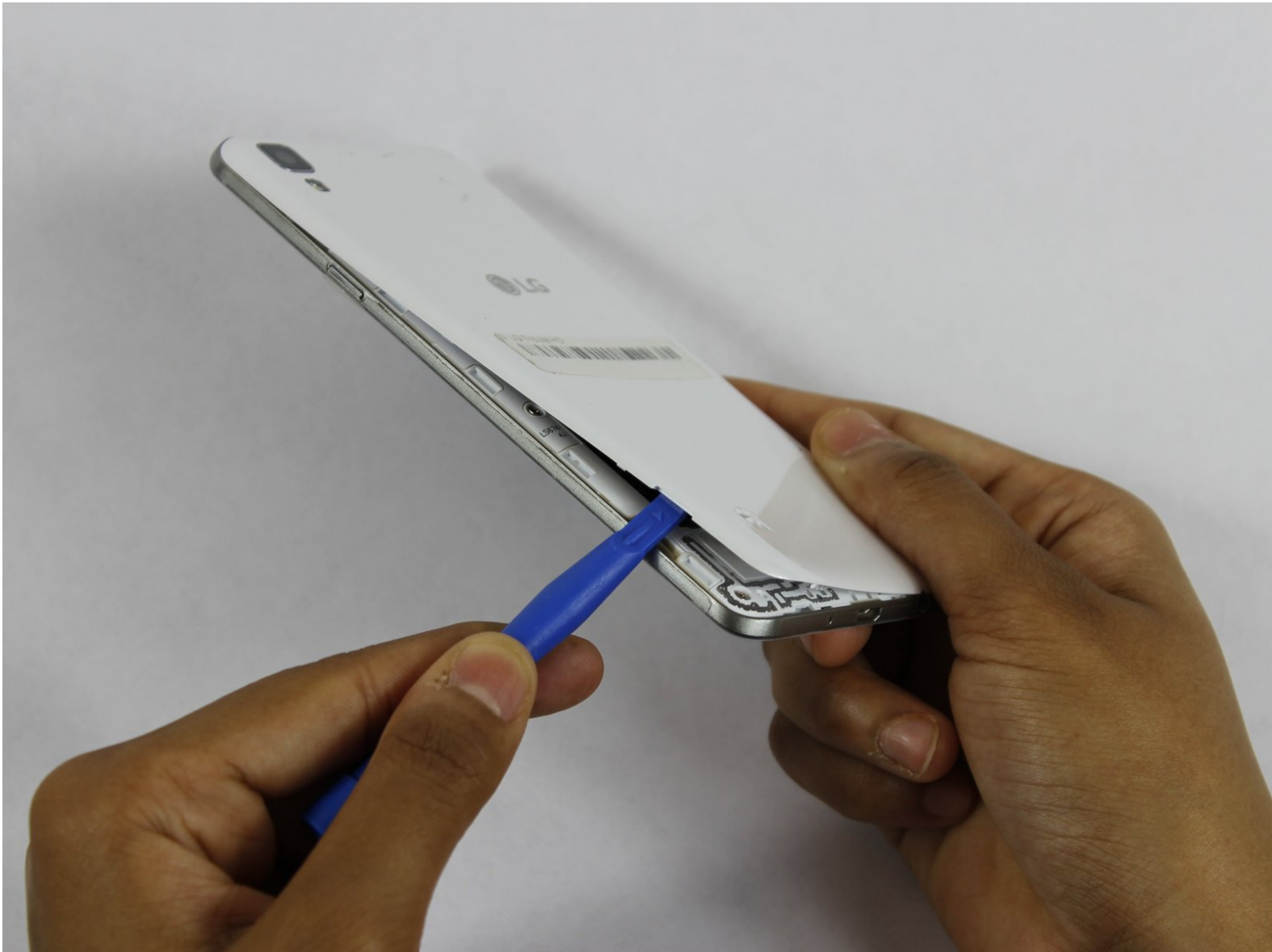




LG Tribute HD Battery and SD Card Replacement

Removing the rear cover and replacing the battery and/or SD card for the LG Tribute HD LS676.

Written By: Jerry Koenig



INTRODUCTION

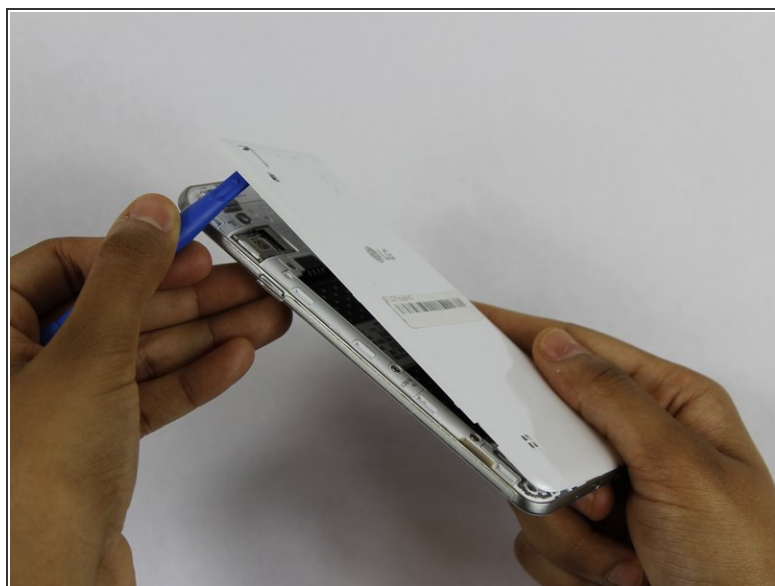
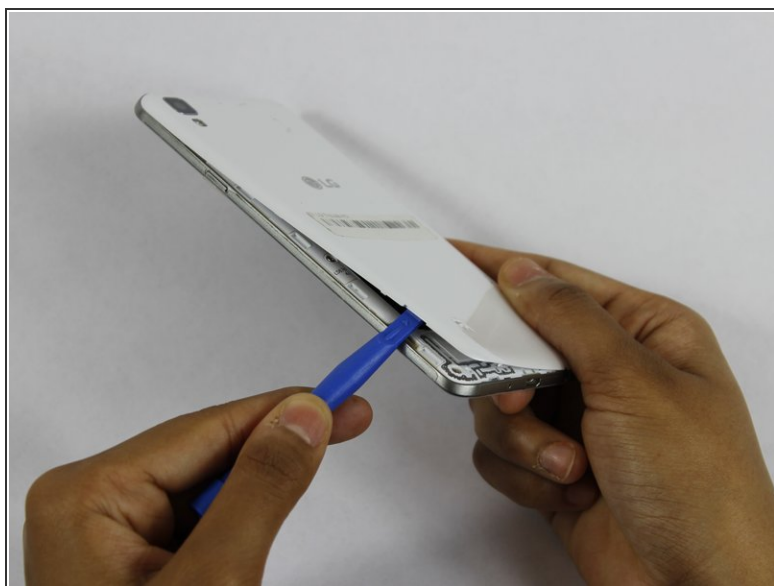
This guide will teach you how to properly replace the battery and SD card in the LG Tribute HD LS676.



TOOLS:

- [iFixit Opening Tools](#) (1)
-

Step 1 — Battery and SD Card



- Insert a fingernail, or plastic opening tool, into the cutout on the back cover and pry outward to remove.

Step 2



- Pull the battery out of the phone.
- Remove the SD Card by sliding the card out as shown.

To reassemble your device, follow these instructions in reverse order.