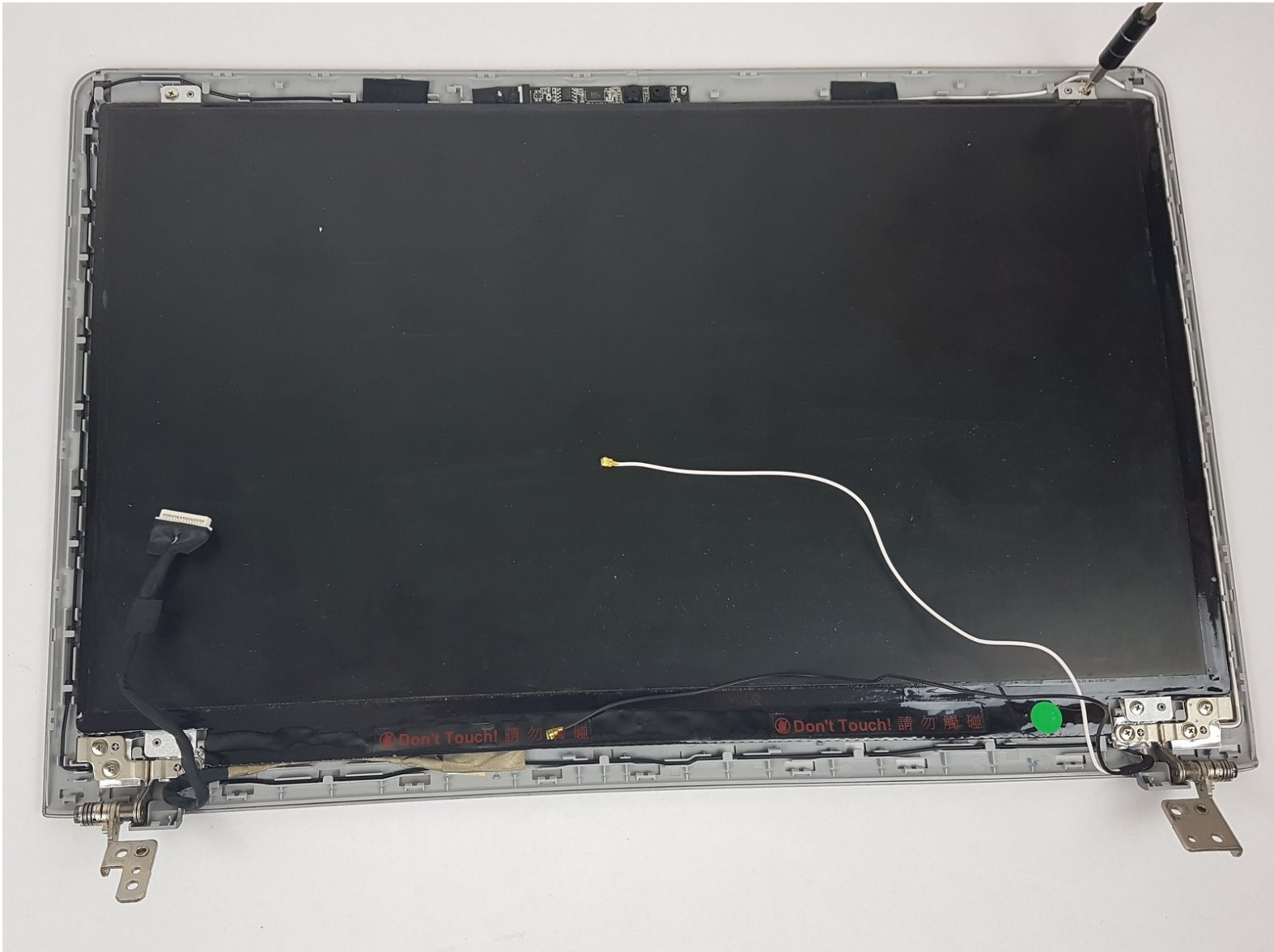




# Samsung NP510R5E-A01UB Display Replacement

This guide will show you how to replace the display for a Samsung NP510R5E-A01UB.

Written By: Dominic Simpson



# INTRODUCTION

The display for a device gives visual output for the user to interact with. This guide will help you replace it properly.



## TOOLS:

- [Phillips #0 Screwdriver](#) (1)
- [iFixit Opening Tools](#) (1)



## PARTS:

- [Samsung NP510R5E-A01UB Display](#) (1)

## Step 1 — Hard Drive



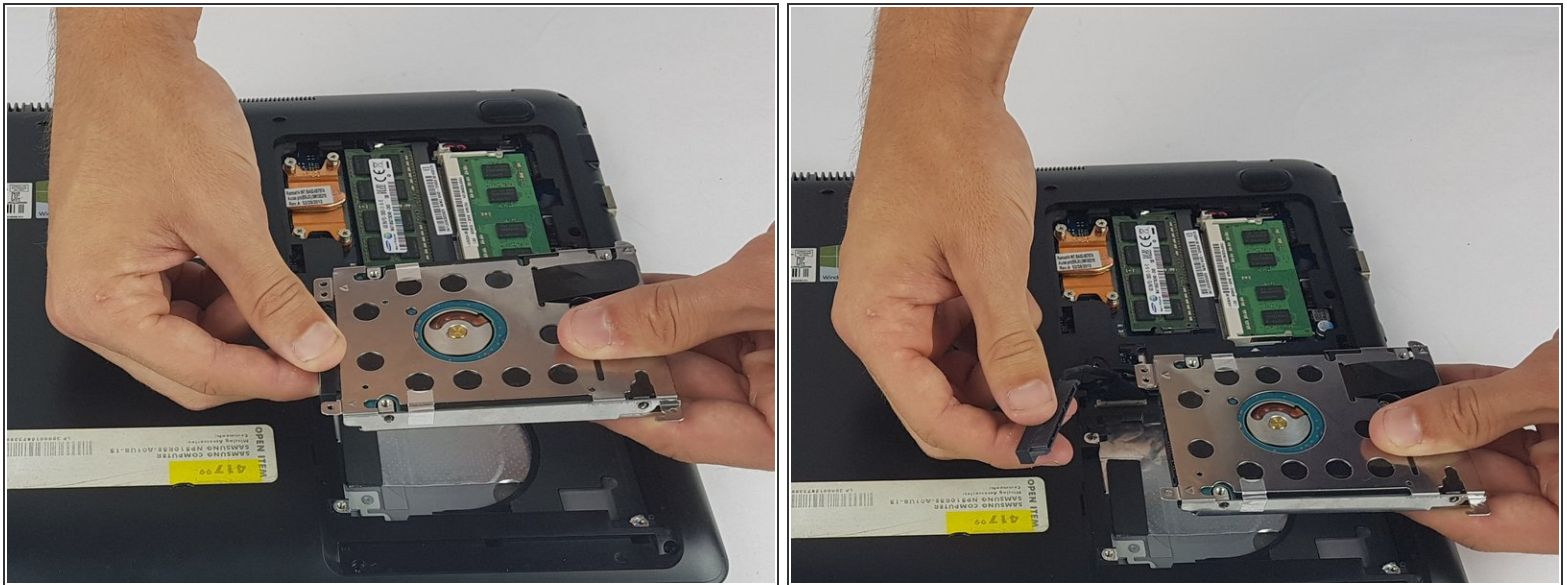
- ⚠ Make sure the device is powered off before beginning.
- Using the Phillips #0 screwdriver, remove the 6.5mm long screw in the area circled.

## Step 2



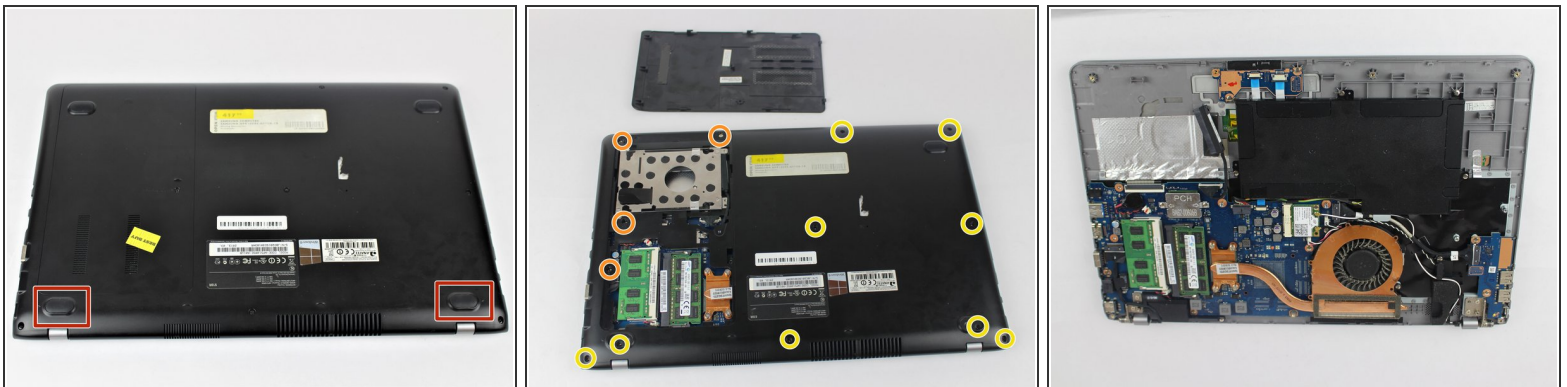
- With the cover removed, unscrew all four of the 4.75mm long screws using the Phillips #0 screwdriver.

### Step 3



- Unplug the connector from the hard drive by pulling straight out.

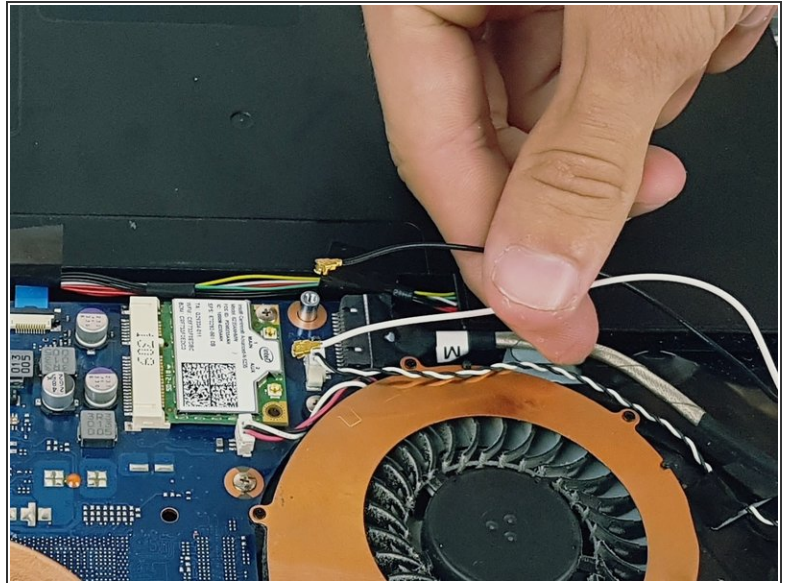
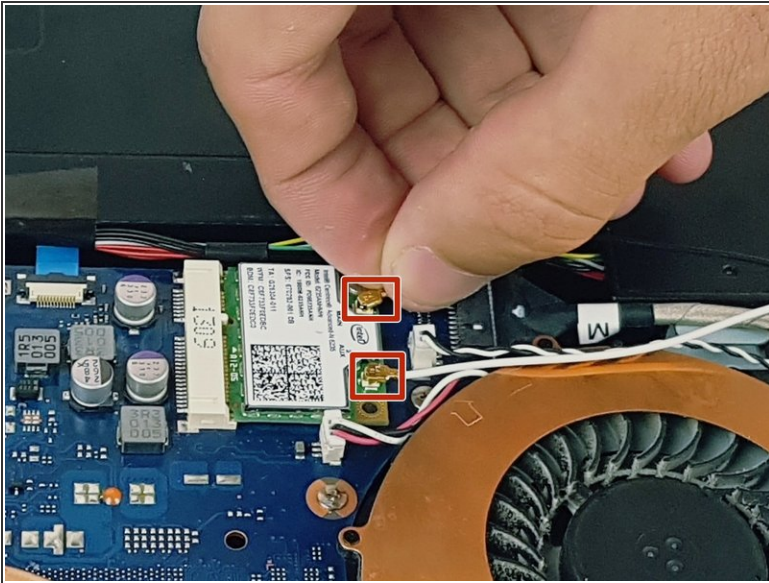
### Step 4 — Display



- Remove the two rubber feet with arrows by them on the back side to uncover two screws.
- Unscrew the four silver 4.4mm long screws near the hard drive.
- Unscrew the remaining nine black 6.5mm long screws. Then remove the back casing using a pry tool if needed.

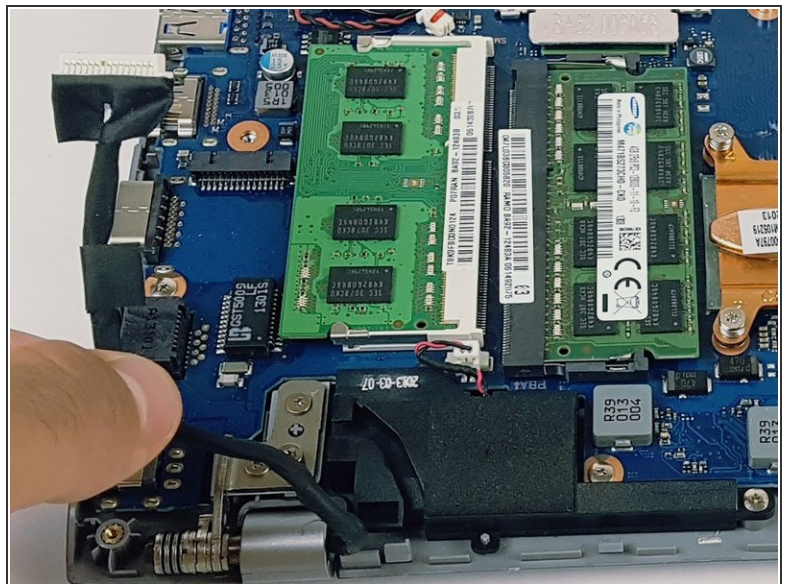
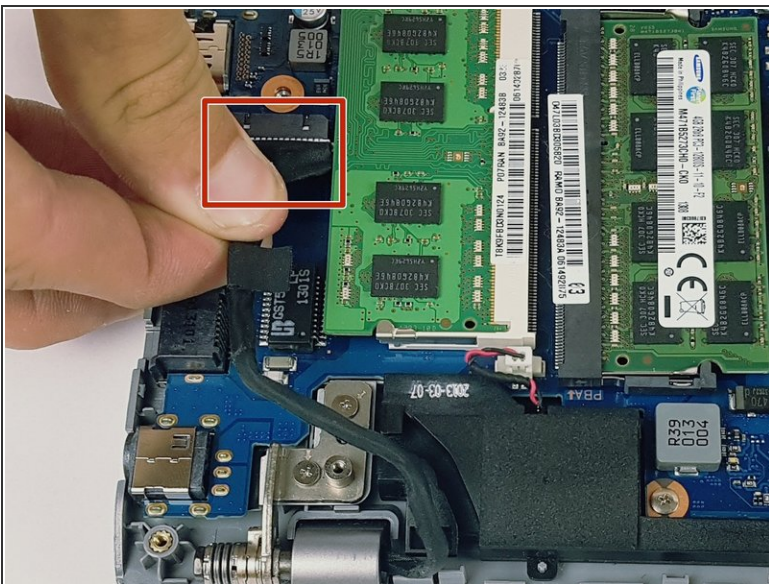


## Step 5



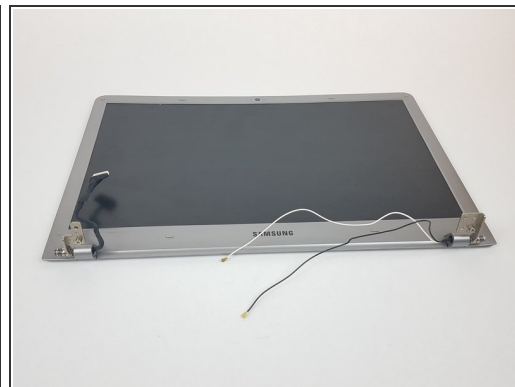
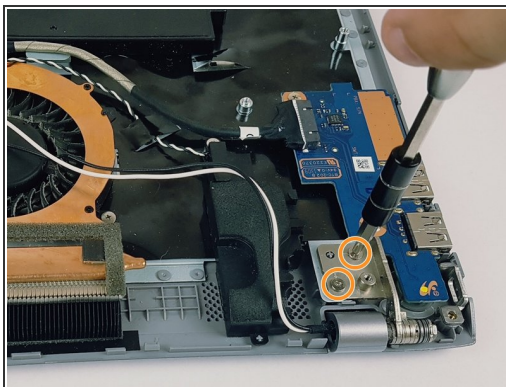
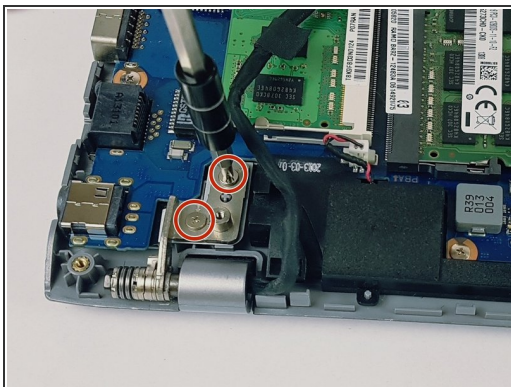
- Disconnect the black and white cables by pulling up as pictured.

## Step 6



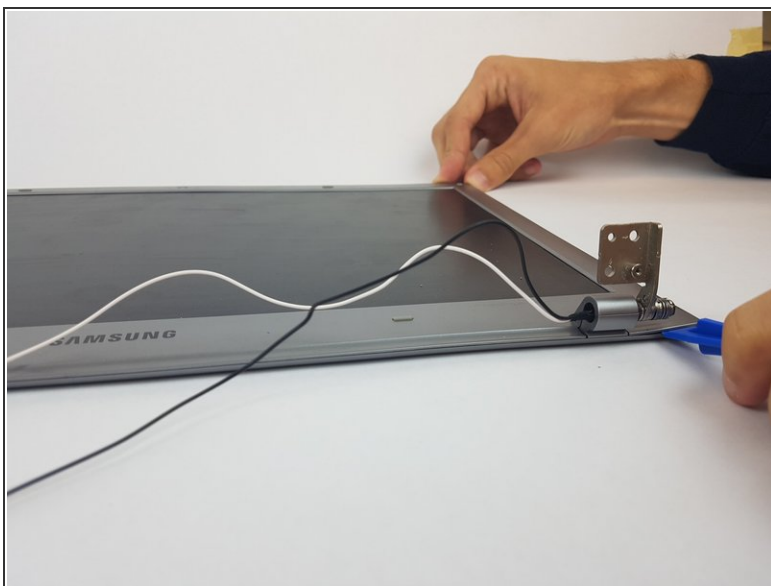
- Disconnect the black cable by pulling straight out.

## Step 7



- Unscrew the two 4.45mm long screws to disconnect the left hinge.
- Unscrew the two 4.45mm long screws to disconnect the right hinge.
- ⓘ At this point the screen and plastic housing should be completely disconnected.

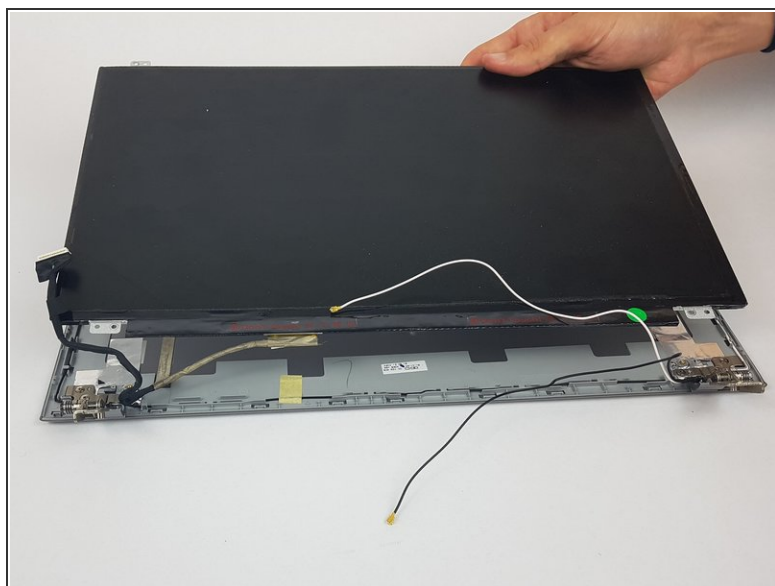
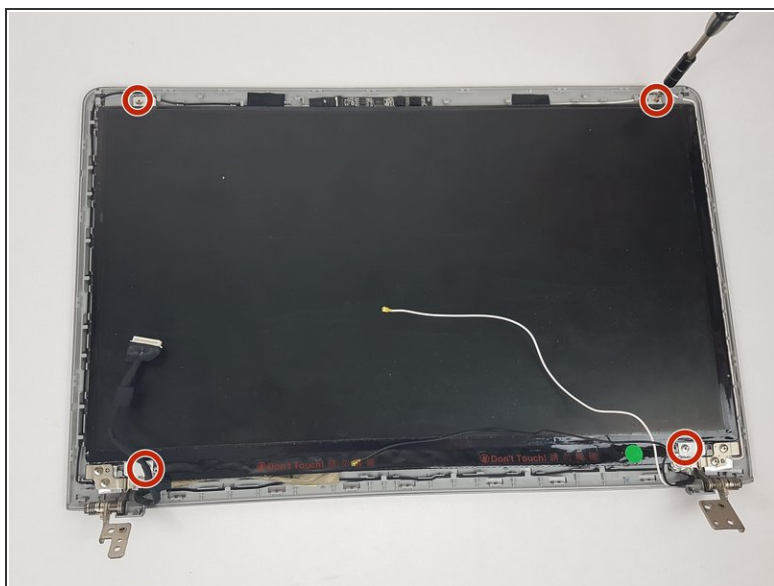
## Step 8



- Using the plastic opening tool, pry open the plastic housing that holds the display.

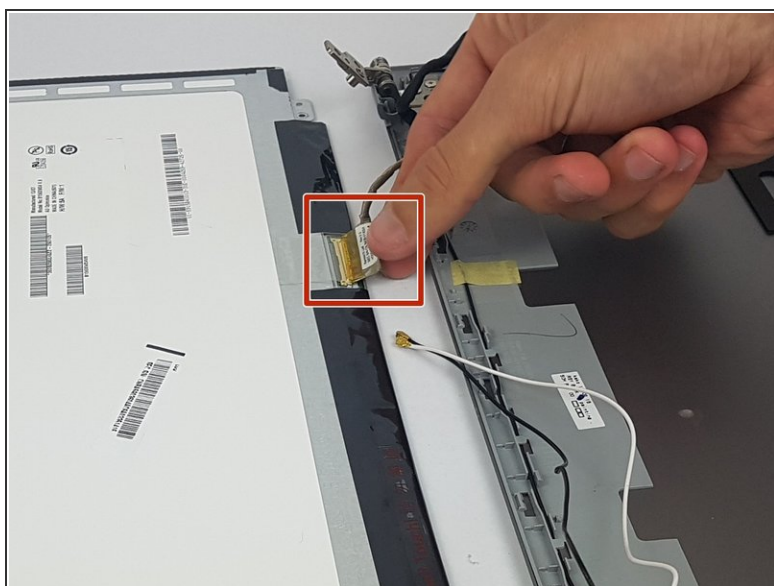


## Step 9



- Unscrew the four 3.55mm long screws that hold the display in place.

## Step 10



- Disconnect the last cable by pulling straight out.

To reassemble your device, follow these instructions in reverse order.