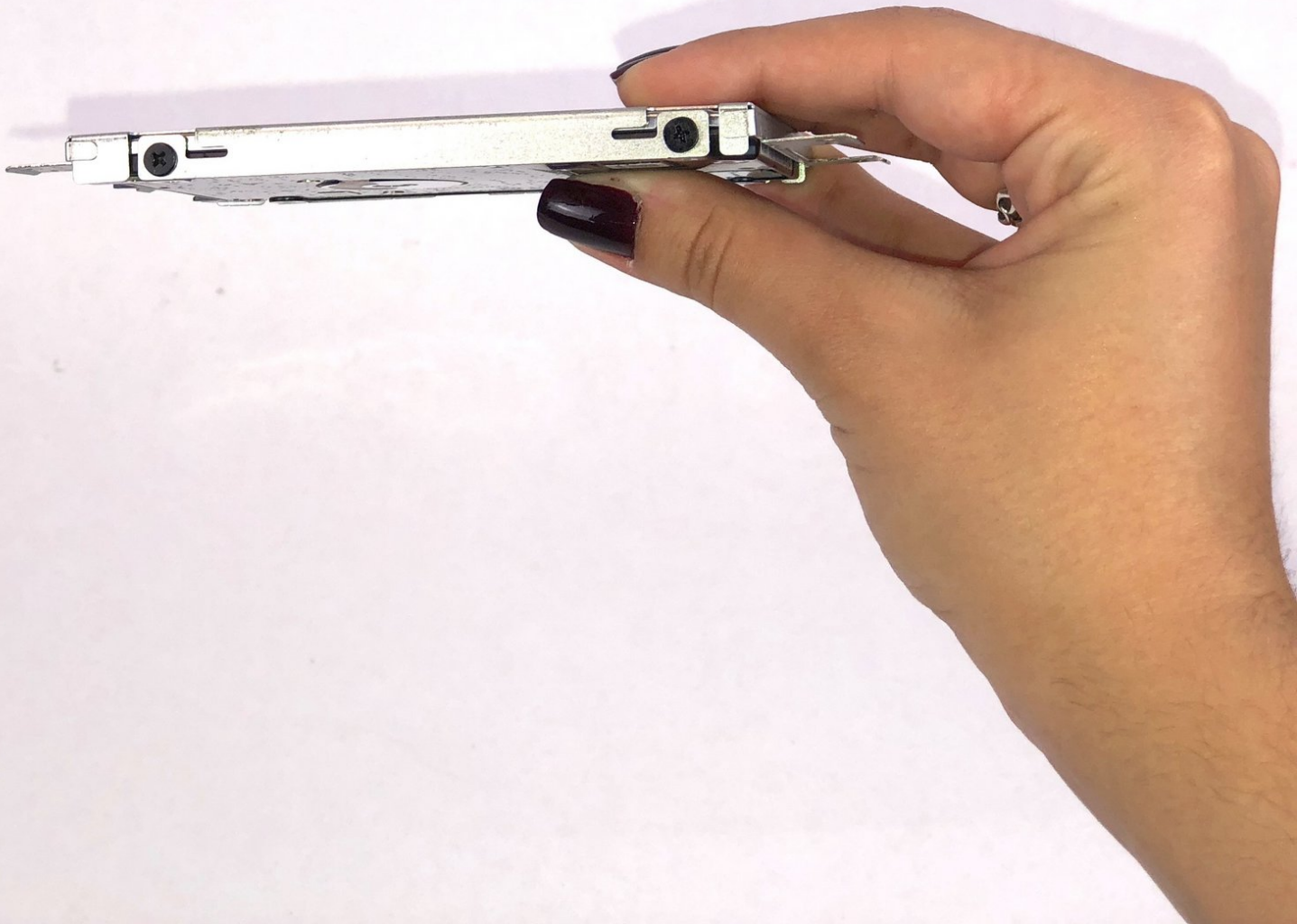




HP Elitebook 820 G1 Hard Drive Replacement

Hard drives are mechanical and begin to fail...

Written By: Alberto Carlos Perez



INTRODUCTION

Hard drives are mechanical and begin to fail with age. Drops and physical damage can cause the drive to fail sooner. Follow this guide to the replace the hard drive. When replacing the hard drive, the Torx screws will be transferred to the new drive.



TOOLS:

- [iFixit Opening Tool](#) (1)
- [Phillips #0 Screwdriver](#) (1)



PARTS:

- [1 TB SSD](#) (1)
- [250 GB SSD](#) (1)
- [Crucial MX500 500 GB SSD](#) (1)
- [2 TB SSD](#) (1)

Step 1 — Battery



⚠ Ensure the laptop is completely powered off and power adapter is unplugged before removing the battery.

- Turn over laptop so that the bottom is showing.
- Unlock the latch.

Step 2



- Remove the back cover and you will then be able to see the battery.

Step 3



- Unlatch the two latches securing the battery in the case.

Step 4



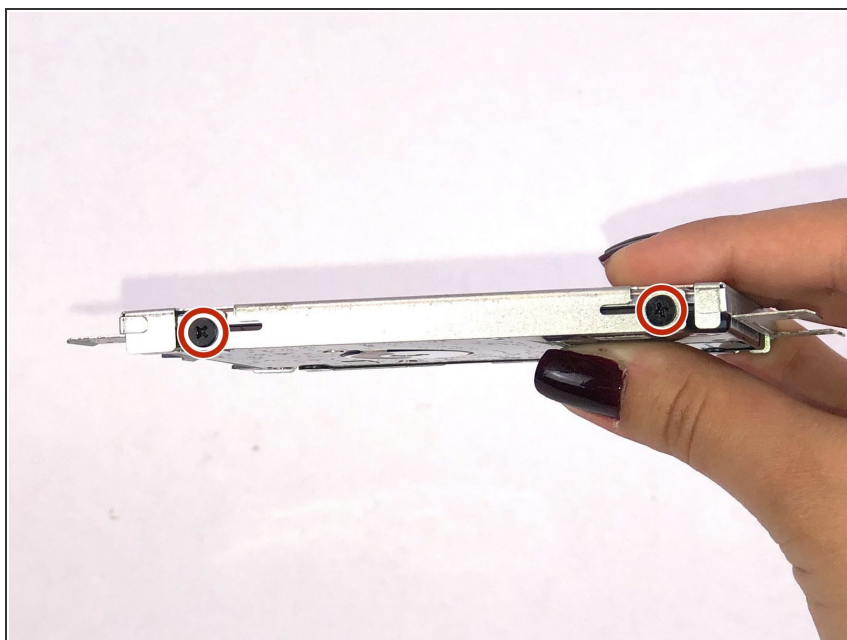
- Use a plastic opening tool to lift and remove the battery.

Step 5 — Hard Drive



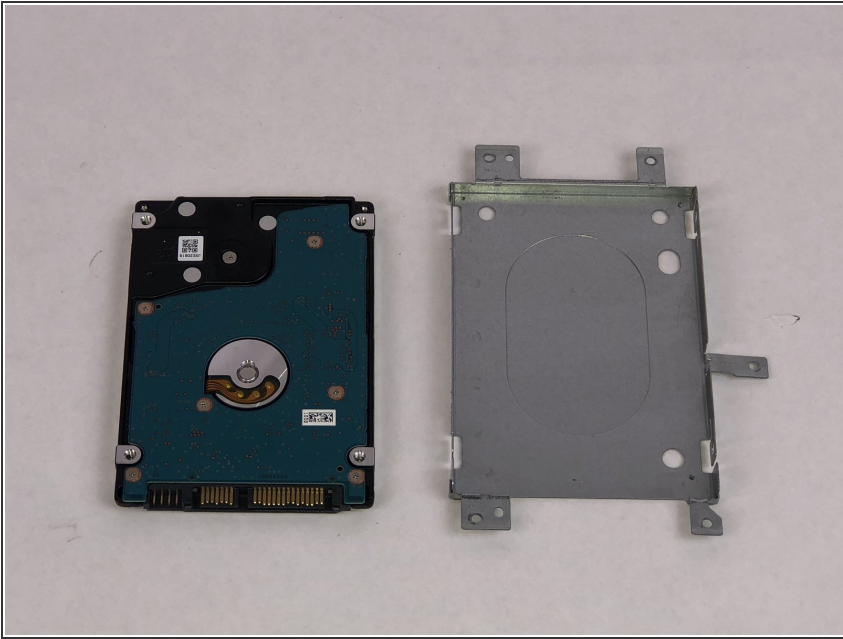
- Remove the four 8mm screws with the T7 philip's head.

Step 6



- Remove the hard drive casing.
- Unscrew the four 8mm Philips screws holding the hard drive.

Step 7



- Remove the hard drive from the casing and replace it.

To reassemble your device, follow these instructions in reverse order.