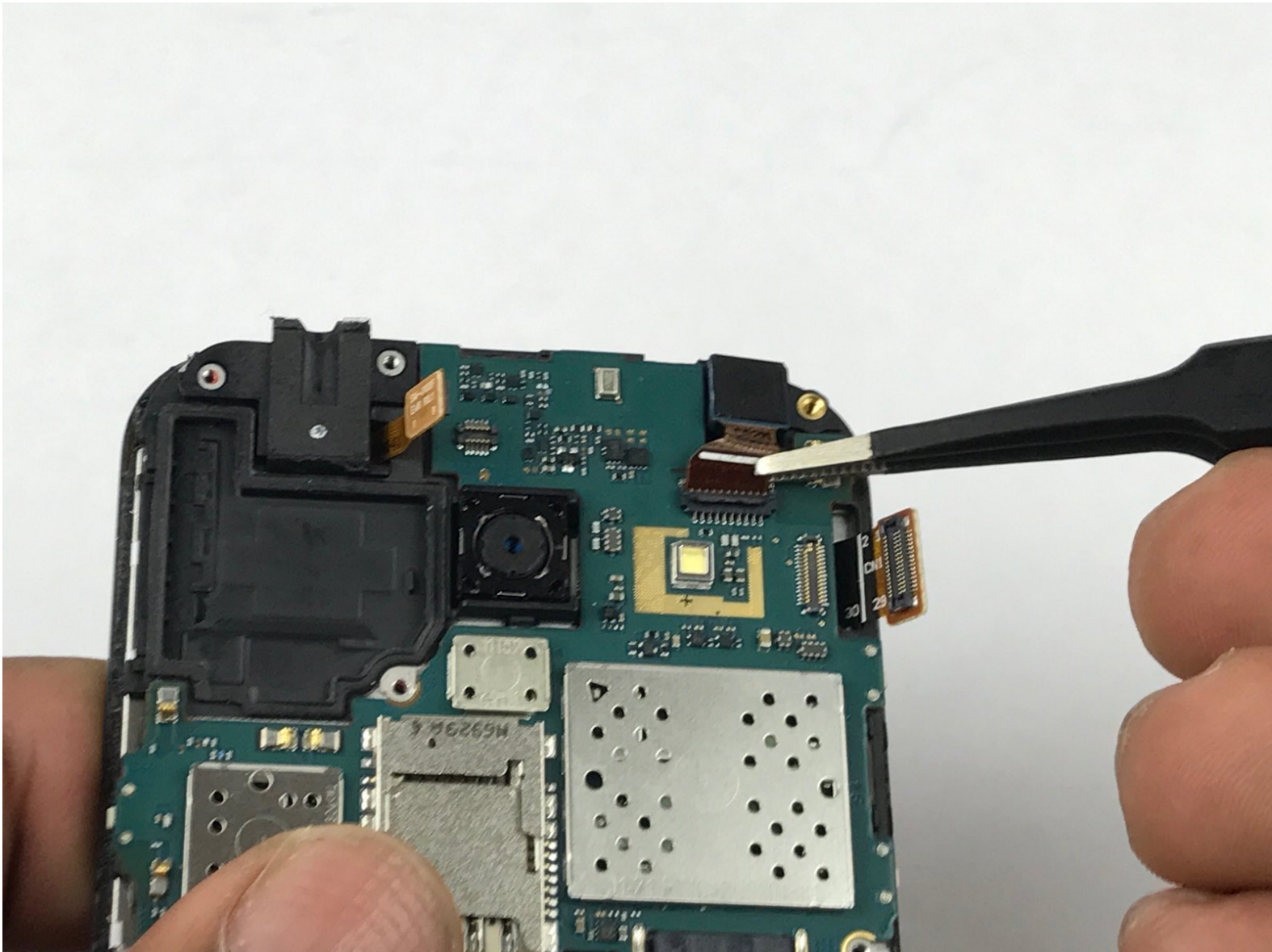




# Samsung Galaxy J1 Front-Facing Camera Replacement

This guide will assist in the replacement of the Samsung Galaxy J1's Front-Facing Camera.

Written By: Sean Kramer



---

# INTRODUCTION

Outline what you are going to teach someone how to do.

---



## TOOLS:

- [Phillips #00 Screwdriver](#) (1)
  - [iFixit Opening Tools](#) (1)
  - [Spudger](#) (1)
-

## Step 1 — Midframe



- Insert a finger nail or plastic opening tool between the back cover and the device.
- Gently pry the rear cover off of the back of the phone.

## Step 2



- Using a finger, pull the SIM card down out of its slot.
  - Remove the SIM card.
- i** The pictured device is missing the SIM card and battery.



## Step 3




- Using a Phillips #00 screwdriver remove the eleven 3 mm screws.

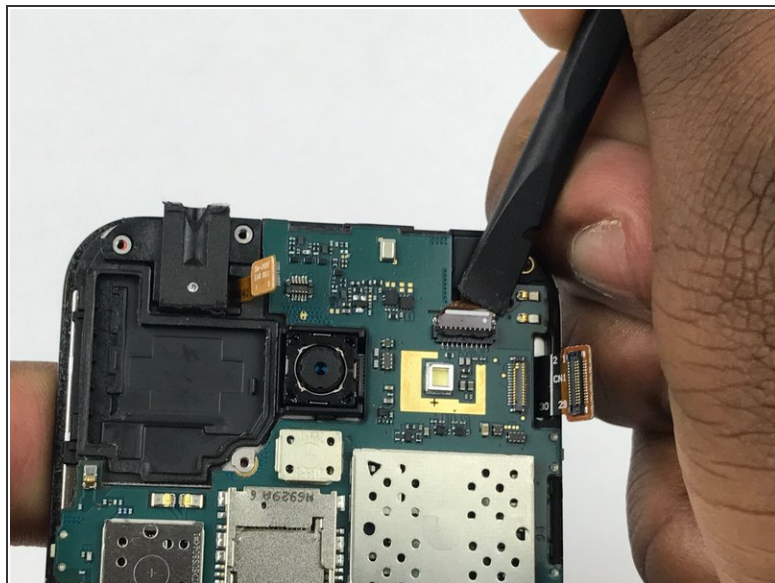
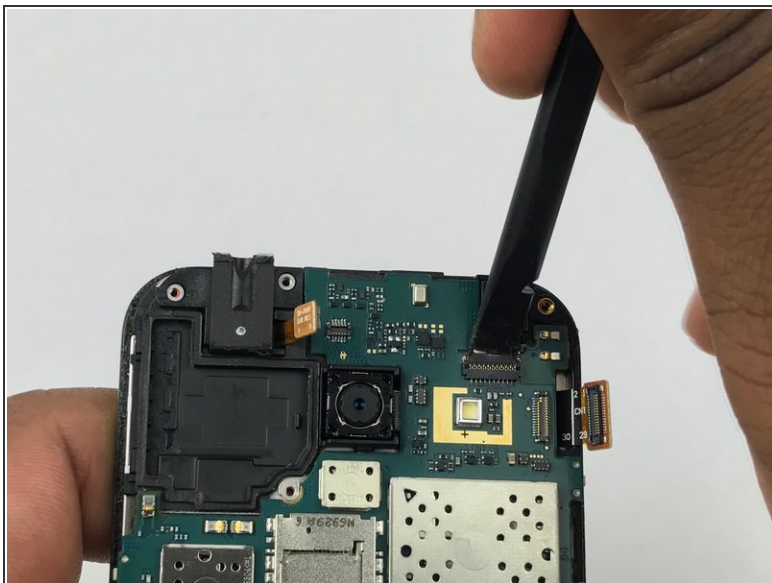
## Step 4



- Insert a plastic opening tool between the screen and the back of the device.
- Starting at the bottom of the device, gently slide the tool along the edges of the screen.
- Gently pry the main assembly from the midframe of the device.

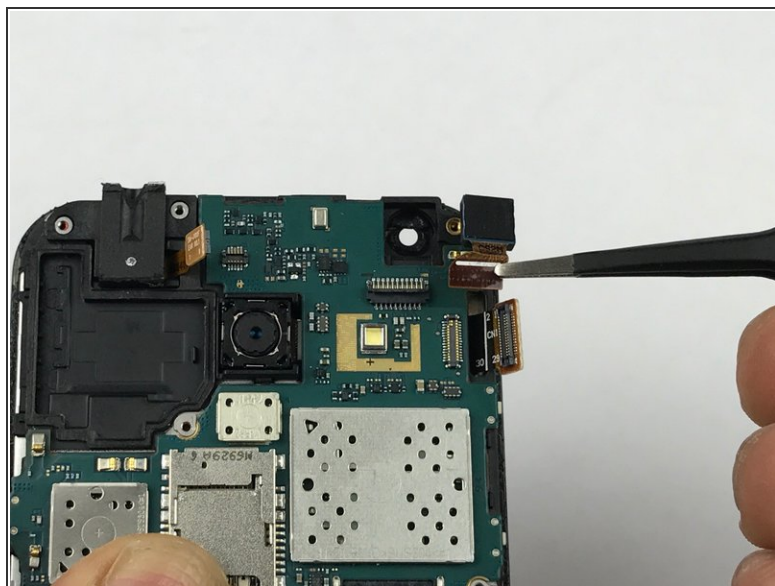
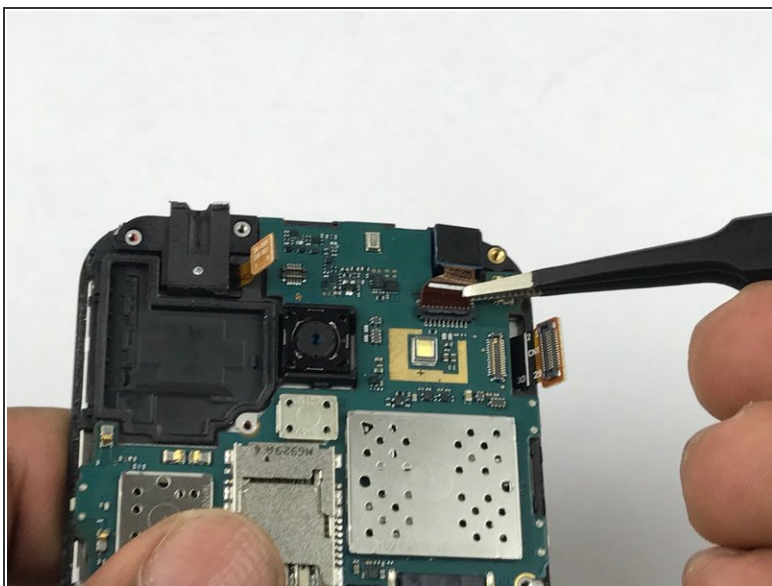
 When removing the main assembly, pry gently so as to not crack the glass screen or break any clips within the device.

## Step 5 — Front-Facing Camera



- Use the flat end a spudger to disconnect the front-facing camera cable connector.

## Step 6



- Using tweezers, or your fingers, remove the front-facing camera.

To reassemble your device, follow these instructions in reverse order.