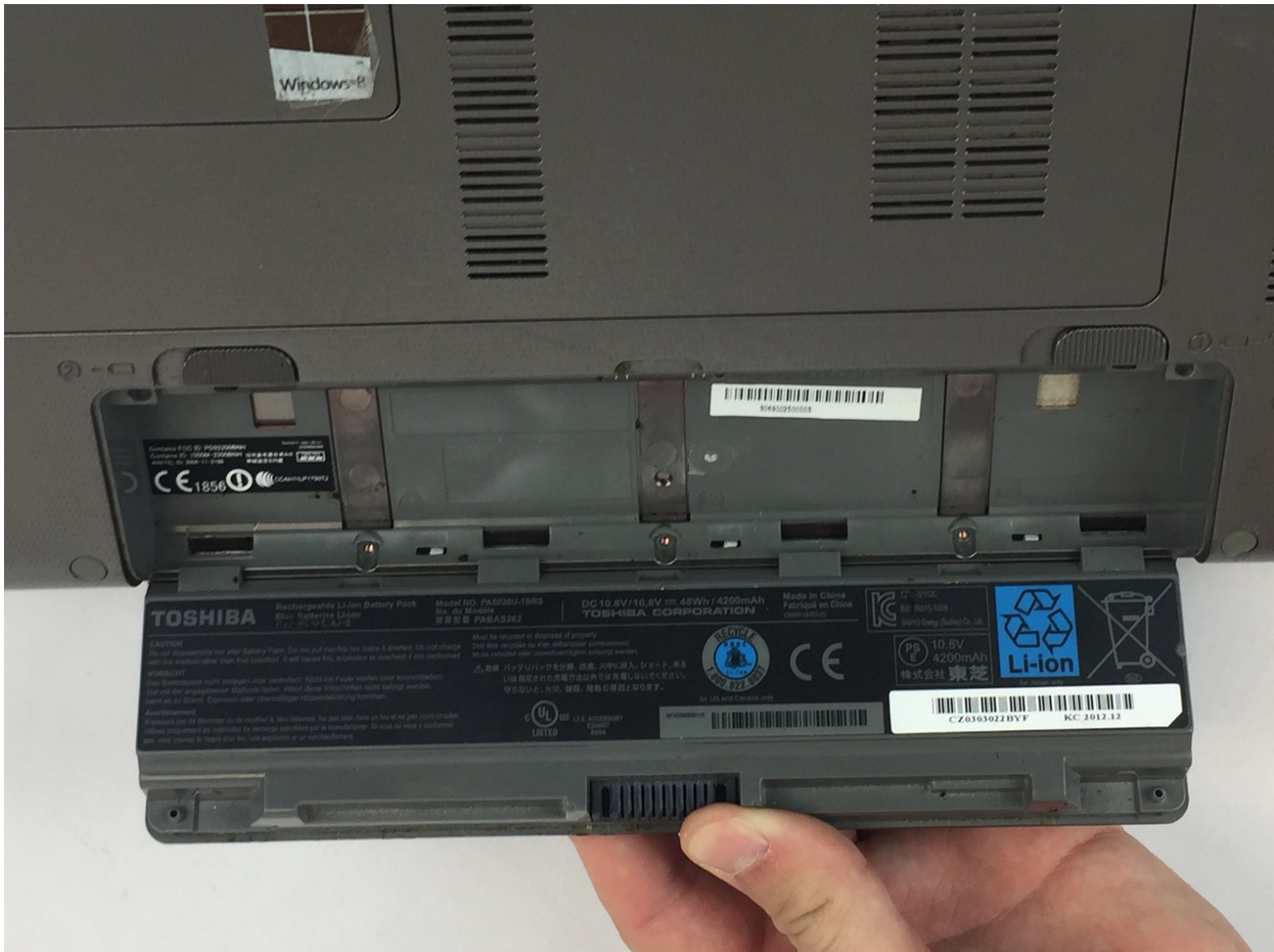




# Toshiba Satellite P855-S5102 Battery Replacement

Replacing your Toshiba Satellite P855-S5102 Battery to jump start your laptop.

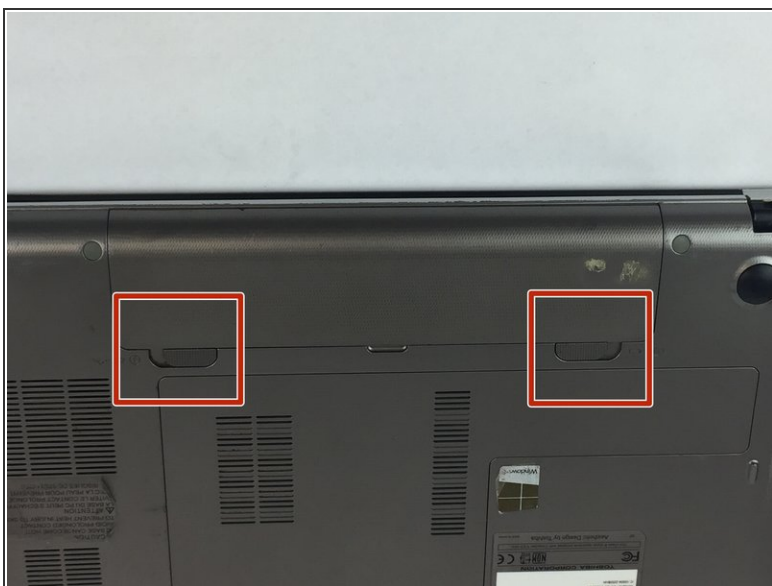
Written By: Brandon McGuffey



## INTRODUCTION

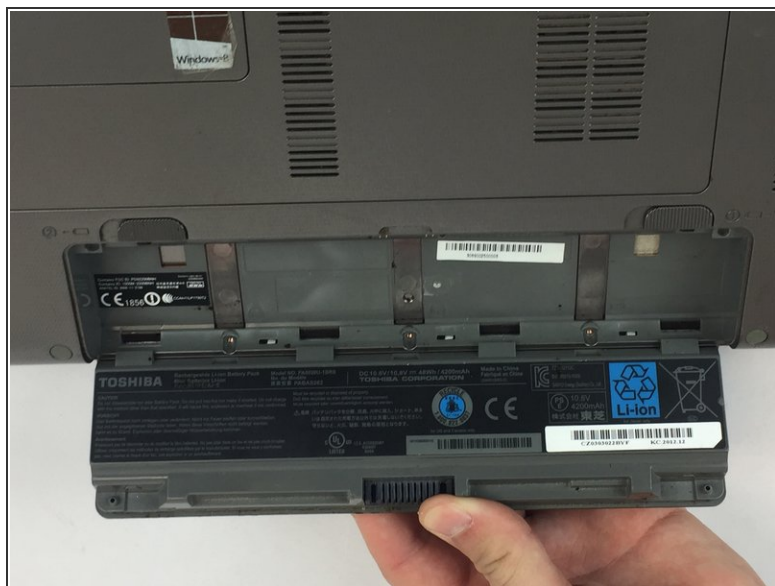
The battery is a key component of the entire Toshiba Satellite computer, and allows the idea of a mobile computer to exist by providing power to the system. Below are specific instructions to remove the battery.

## Step 1 — Battery



- Push the locking tabs away from each other.

## Step 2



- Pull up on the battery to remove.

To reassemble your device, follow these instructions in reverse order.