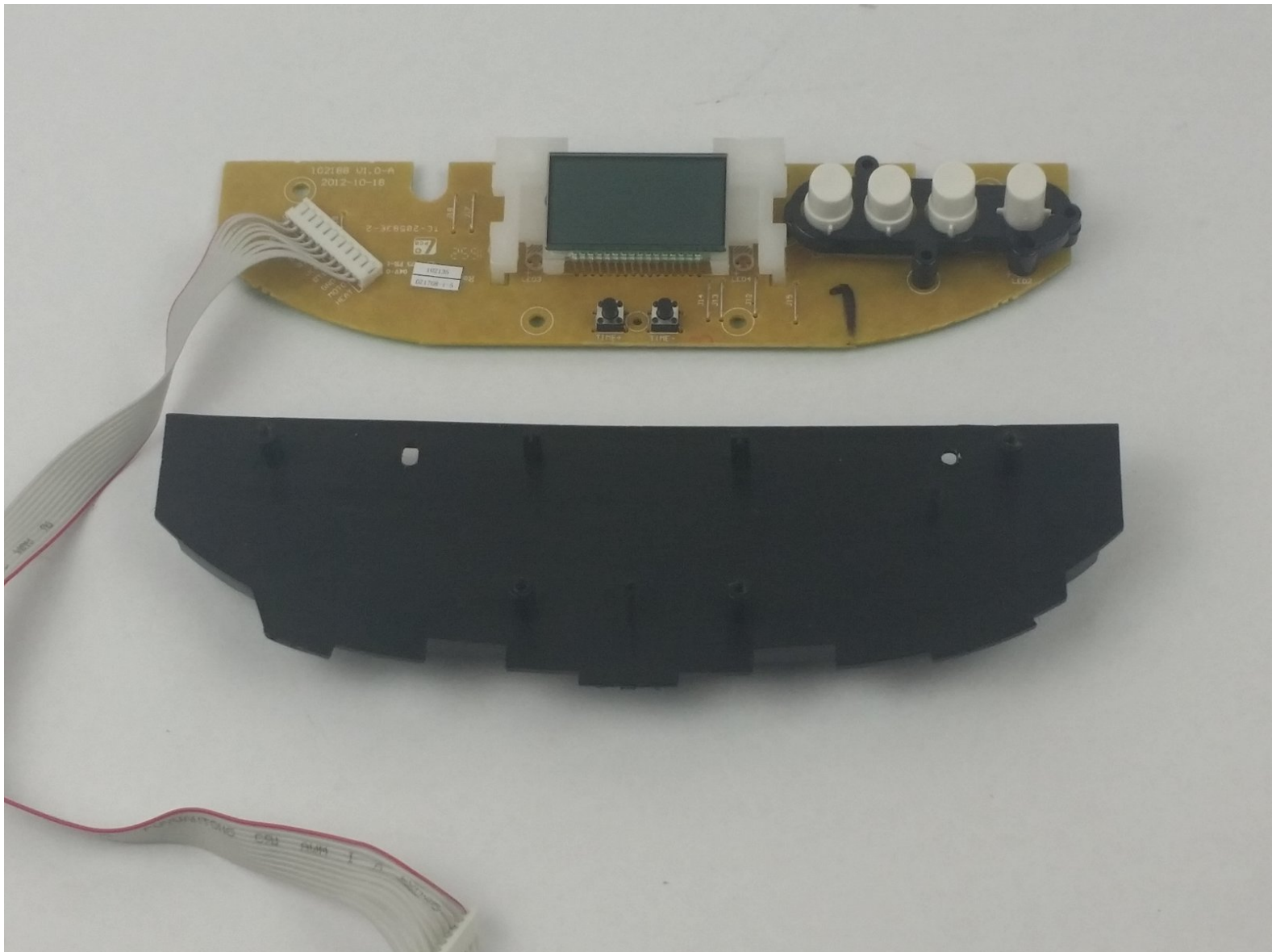




Oster Expressbake CKSTBRTW20 Top Panel Buttons Replacement

If you find that your Expressbake Bread Maker's buttons are jammed or no longer functioning, you may need to replace them. This guide will show you how.

Written By: Megan Saunders



INTRODUCTION

The buttons may get stuck or broken with use. This guide will show how to remove the buttons in order to properly replace them.



TOOLS:

- [Phillips #1 Screwdriver](#) (1)
 - [Spudger](#) (1)
-

Step 1 — Top Panel Removal



- Remove the bread pan.

Step 2



- Remove the eight 22mm Phillips #1 screws from the grey lining.
- Remove the grey liner.

Step 3



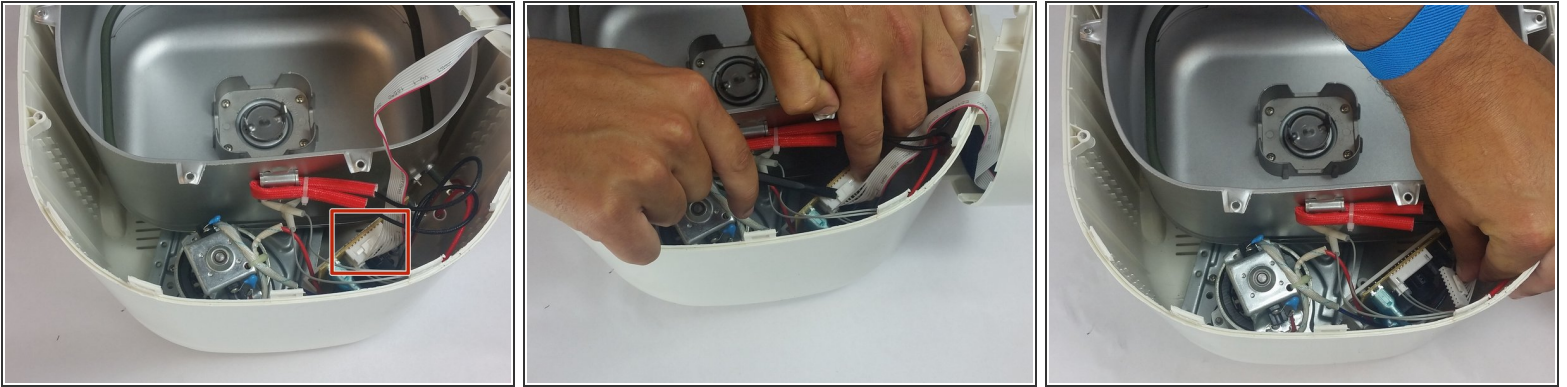
- Remove the two 11mm Phillips #1 screws from the back of the device.

Step 4



- Pop off the top case using a spudger.
- i Keep the spudger away from the control panel.
- ⚠ Be aware of wires connecting the microcontroller to the panel when removing the top lining.

Step 5 — Top Panel Buttons



- Disconnect microcontroller and top lining.

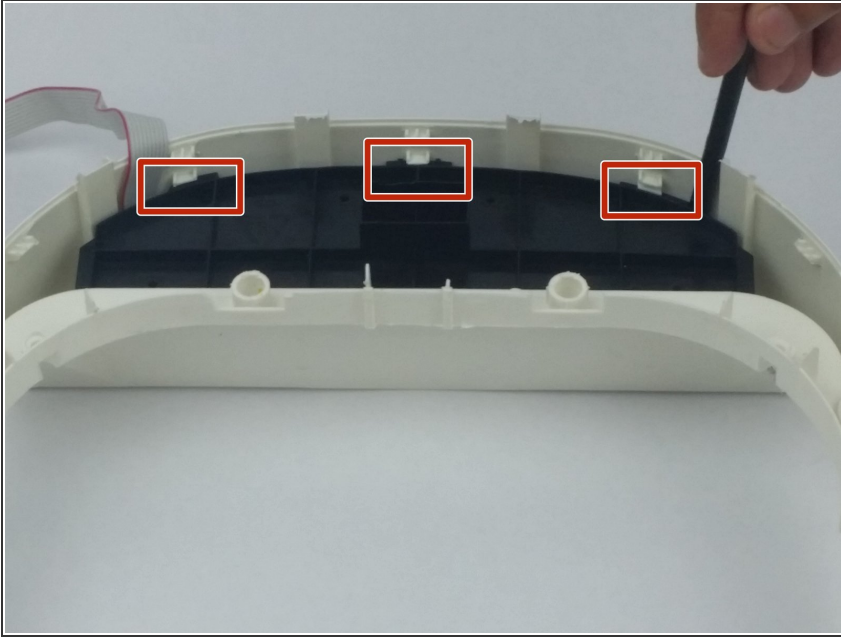
⚠ Ground yourself prior to disconnecting in order to avoid harming the inner electronics.

Step 6



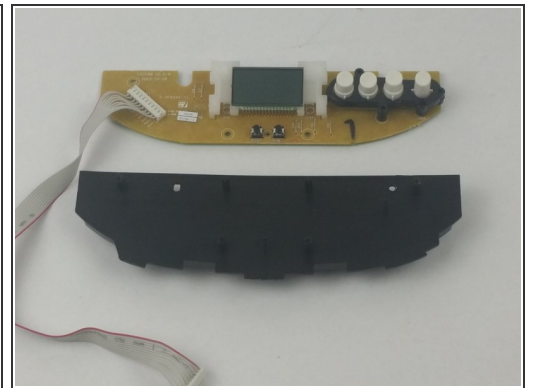
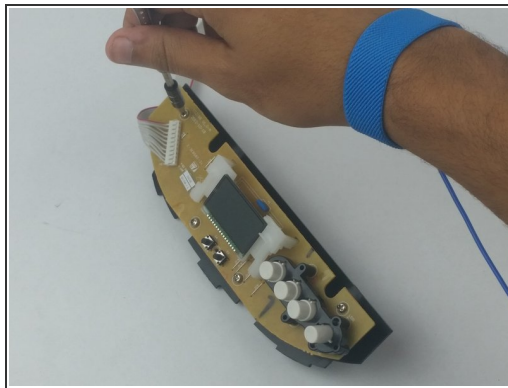
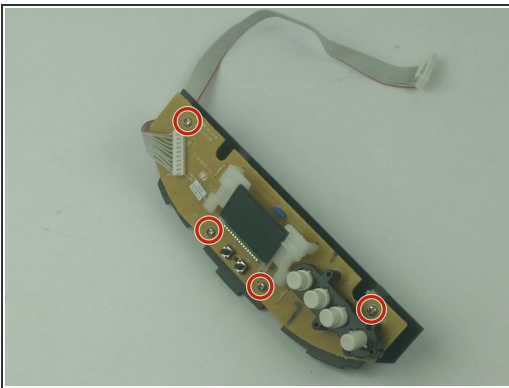
- Remove the two 11mm Phillips #1 screws from the top cover.

Step 7



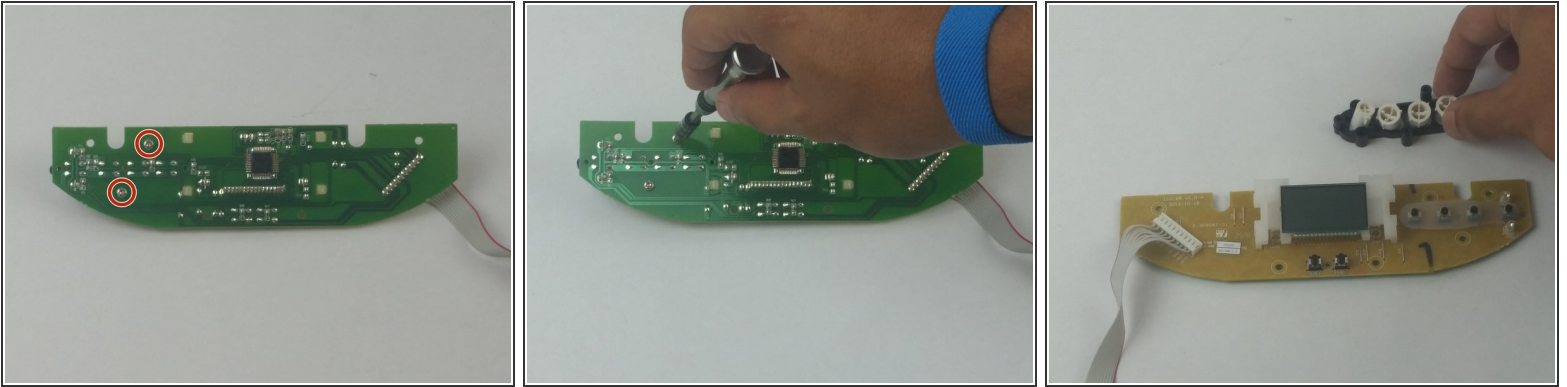
- Use spudger to pop the control panel out.

Step 8



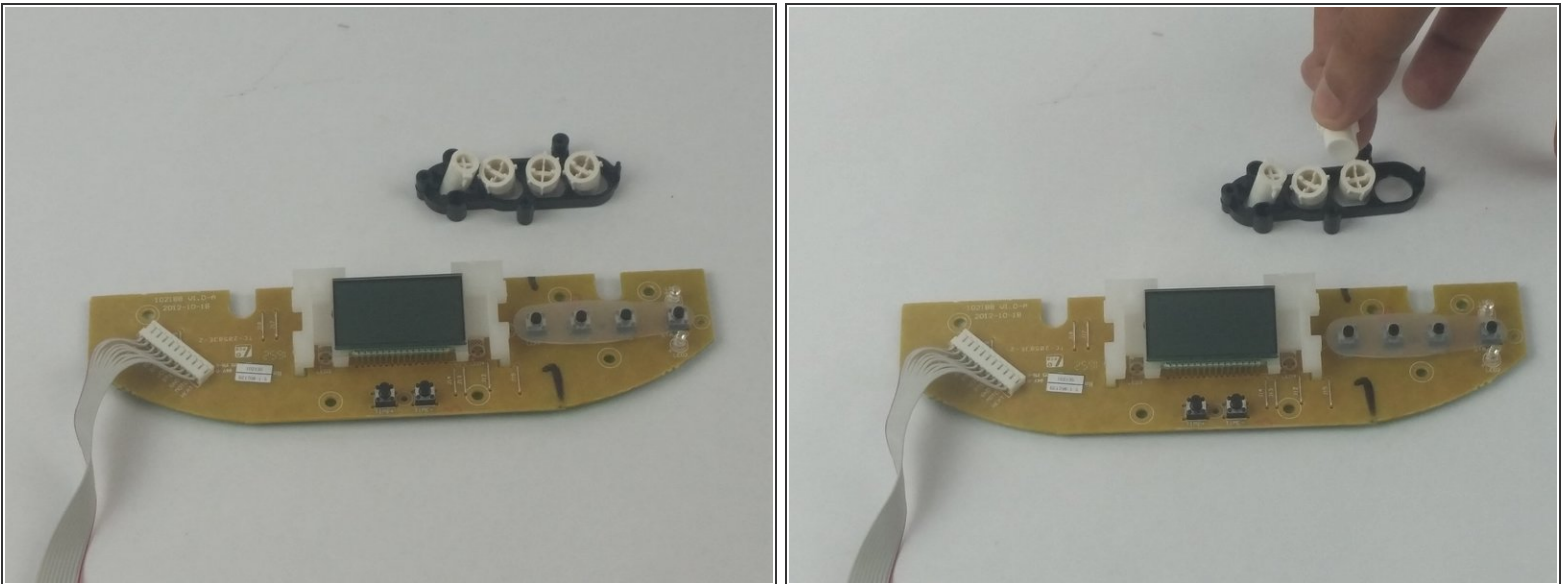
- Remove the four 11mm Phillips #1 screws from the control panel.

Step 9



- Remove the two 11mm Phillips #1 screws from the button panel.
- Flip the screen assembly over and remove the button panel.

Step 10



- Remove and replace buttons as necessary.

To reassemble your device, follow these instructions in reverse order.