



# ZTE Max XL Front-Facing Camera Replacement

This guide will replace your ZTE Max XL's front-facing camera, in order to gain access you must perform steps 1 through 7 of the battery replacement guide.

Written By: Olivia Wolf



This document was generated on 2020-11-25 11:34:33 AM (MST).

# INTRODUCTION

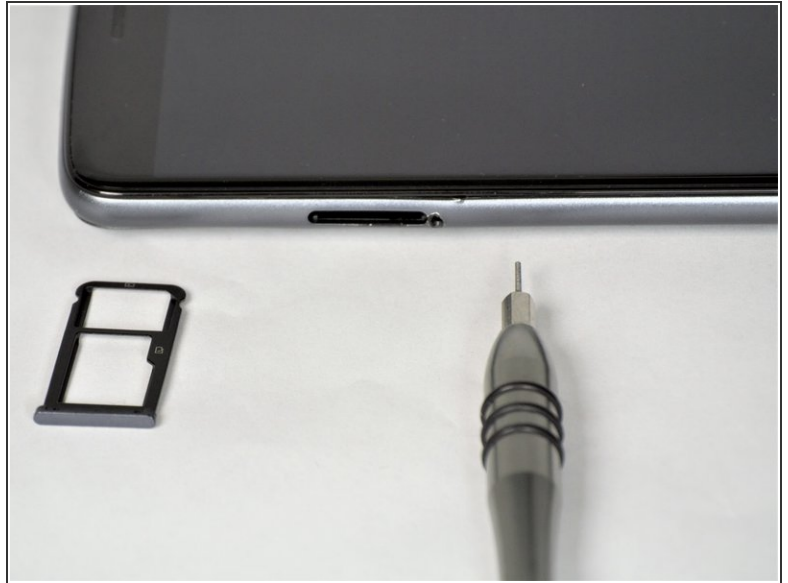
This guide has step-by-step instructions on how to replace your ZTE Max XL front-facing camera. To determine if you need to replace your camera refer to our [Troubleshooting Guide](#).


---

## TOOLS:

- [JIS #00 Screwdriver](#) (1)
  - [iOpener](#) (1)
  - [iFixit Opening Tools](#) (1)
  - [iFixit Opening Picks set of 6](#) (1)
  - [Spudger](#) (1)
  - [SIM Card Eject Tool](#) (1)
-

## Step 1 — Front-Facing Camera



-  Before disassembly, assure the phone is powered off.
- Use the SIM Card remover key, remove the SIM Card tray. To do this insert the key into the hole on the side of the phone near the SIM Card tray.

## Step 2



- Apply the iOpener to the back of the phone. For instructions of how to use the iOpener, use [this guide](#).
- ⓘ On our phone there was adhesive on the top and bottom of the phone backing, so we specifically heated these areas.
- ⚠ **Do not heat the phone too much in one area - it may warp the plastic backing.**



### Step 3



- Start at one corner, and use the plastic opening pick from the iFixit kit to wedge underneath the plastic backing to start undoing the tabs that connect the backing to the phone. There are 3 tabs on top and bottom and 6 on each side.

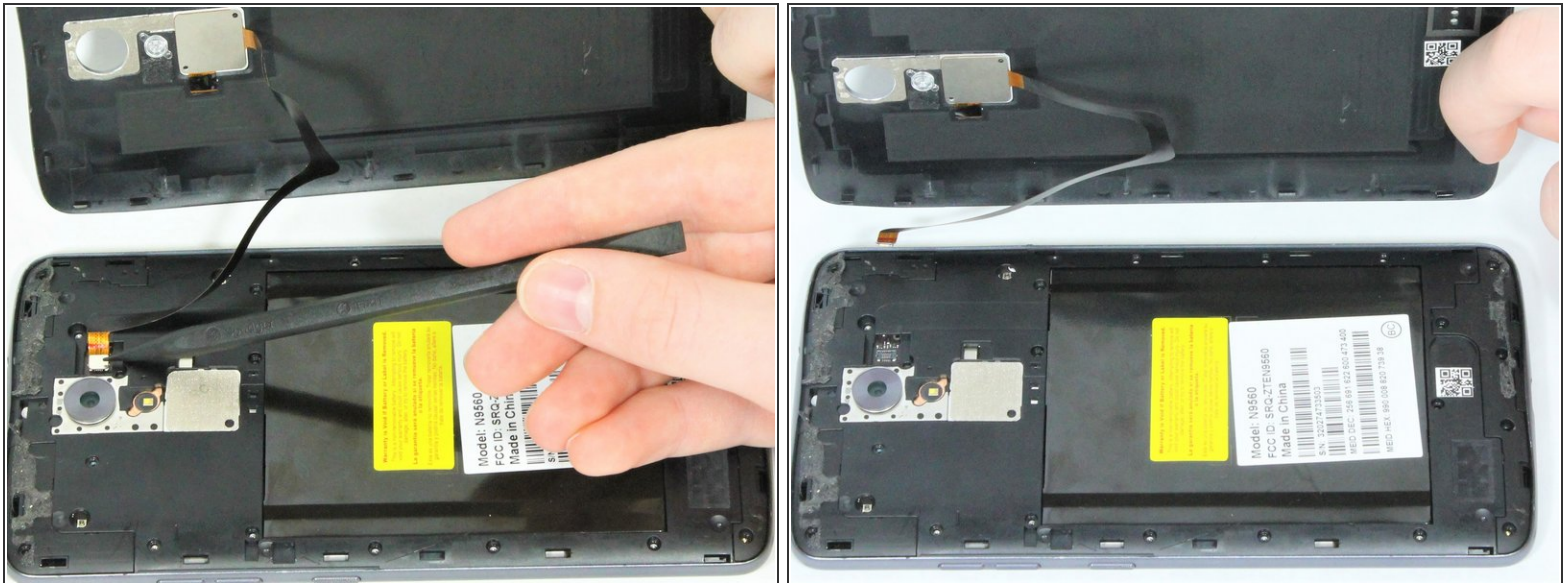
**⚠ Use extreme caution to not puncture the lithium ion battery.**

### Step 4



- ⓘ Carefully undo the ribbon wire for the fingerprint scanner before full removal of the backing.
- There are two 3.4mm JIS #00 screws that hold the wire in place, one may be under a lock sticker. Remove the screws with the JIS #00 screwdriver.

## Step 5



- After removal of the two 3.4mm JIS #00 screws, disconnect the connector that attaches the ribbon wire from the main part of the phone.

## Step 6



- Remove the nineteen 3.4mm JIS #00 screws on the perimeter of the back using the JIS #00 screwdriver.



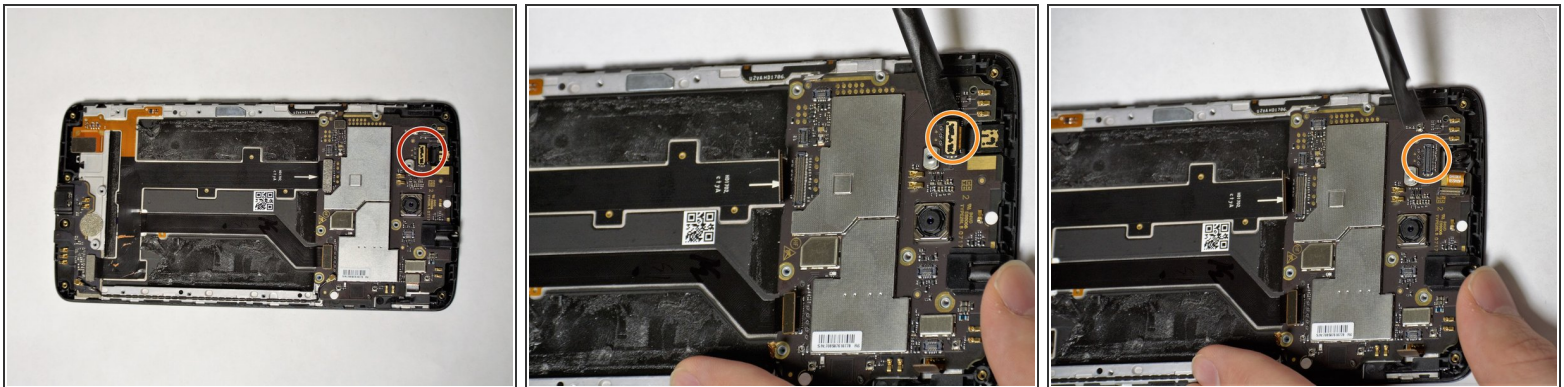
## Step 7



- Use a plastic pick between the screen and side trim battery cover to remove the screen.

⚠ If the SIM Card is still in place during removal of the siding, take care during removal to avoid damaging the SIM Card.

## Step 8



- Now there is access to the phone's components; use the spudger to flip the metal connector to release the camera.
- The camera itself is lightweight so take care during the removal of the connector not to lose it.

## Step 9



- With the metal connector detached, the camera is fully disconnected from the phone and ready to be replaced.

To reassemble your device, follow these instructions in reverse order.