



# LG Stylo 2 Rear Camera Replacement

For this removal you will need a PH00 screw...

Written By: Devon Barber



# INTRODUCTION

For this removal you will need a PH00 screw driver to remove the necessary screws. It is recommended to have very clean hands or even to wear gloves as you will be interacting with the motherboard of the phone.

---

## TOOLS:

[iFixit Opening Tool](#) (1)

[Phillips #00 Screwdriver](#) (1)

[Precision Tweezers Set](#) (1)

---

## Step 1 — Battery



- First you need to remove the back case of the phone.
- Place the phone face down.
- Using the plastic opening tool, insert into the initial gap shown.
- Slowly guide the tool around the case until the case comes off with ease.

## Step 2



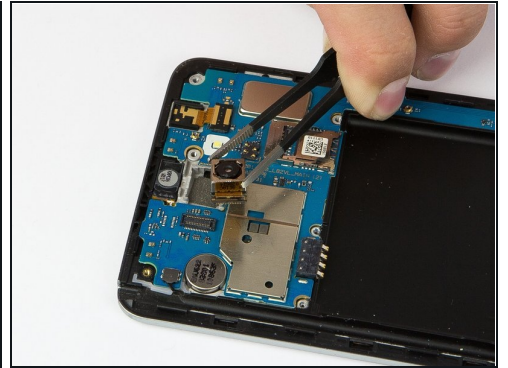
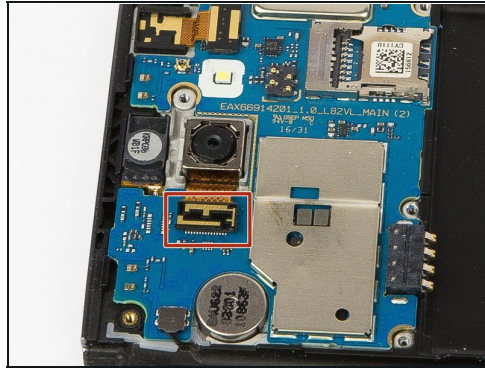
- Place the back case to the side.
- Use your finger or the opening tool to remove battery.
- Remove the battery carefully to not damage the phone or the battery.

## Step 3 — Rear Camera



- Remove the eleven 4mm Phillips #00 screws.
- Place screws in safe location.
- Use Plastic opener tool to remove inner case.
- Gently remove inner case.

## Step 4



- Use your finger or the opener to flip the flex cable shown in red box.
- Use the precision [tweezers](#) to remove camera carefully.

---

To reassemble your device, follow these instructions in reverse order.