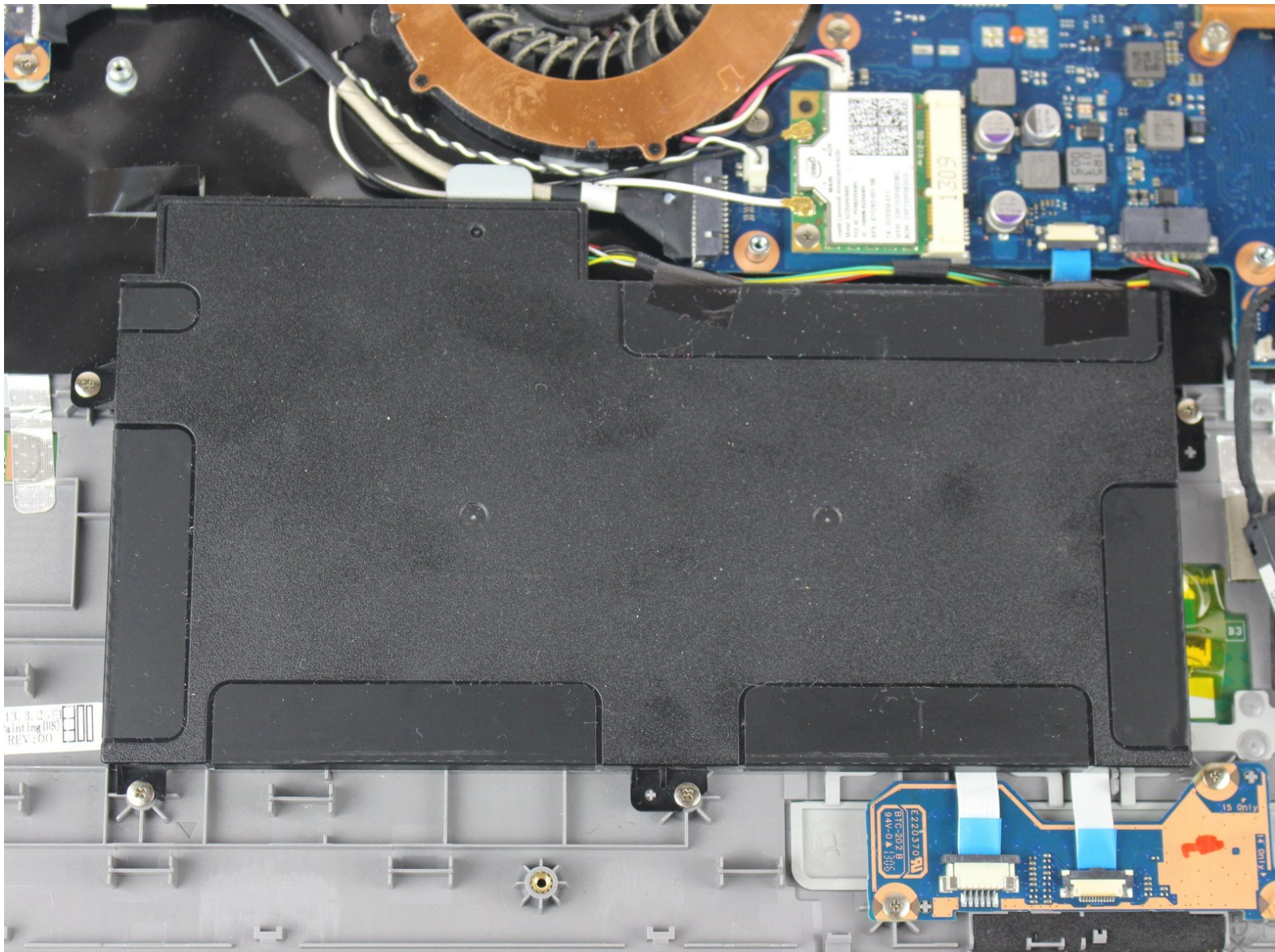




# Samsung NP510R5E-A01UB Battery Replacement

This guide will show you how to replace the battery for a Samsung NP510R5E-A01UB.

Written By: Brian Briggs



# INTRODUCTION

The battery is the power source for the device, without it the device is useless. This guide will help you replace it properly.



## TOOLS:

- [Phillips #0 Screwdriver](#) (1)
- [iFixit Opening Tools](#) (1)



## PARTS:

- [Samsung NP510R5E-A01UB Battery](#) (1)

## Step 1 — Hard Drive



⚠ Make sure the device is powered off before beginning.

- Using the Phillips #0 screwdriver, remove the 6.5mm long screw in the area circled.

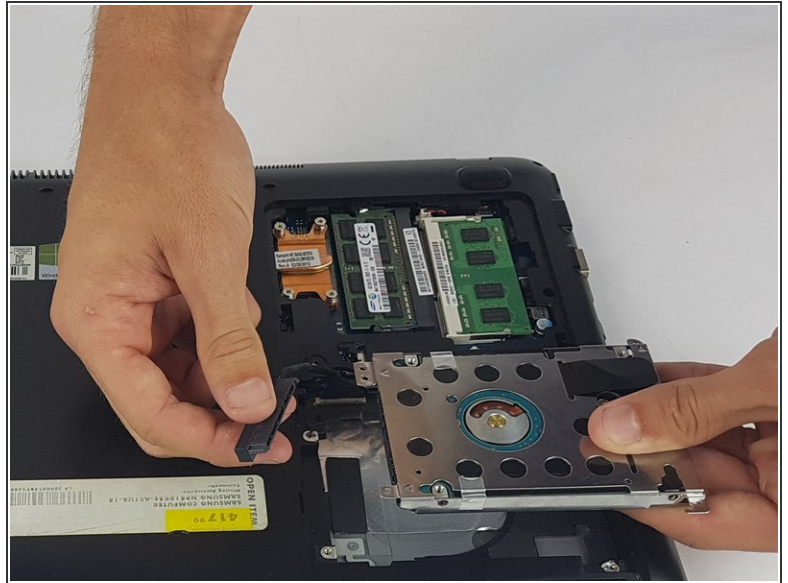
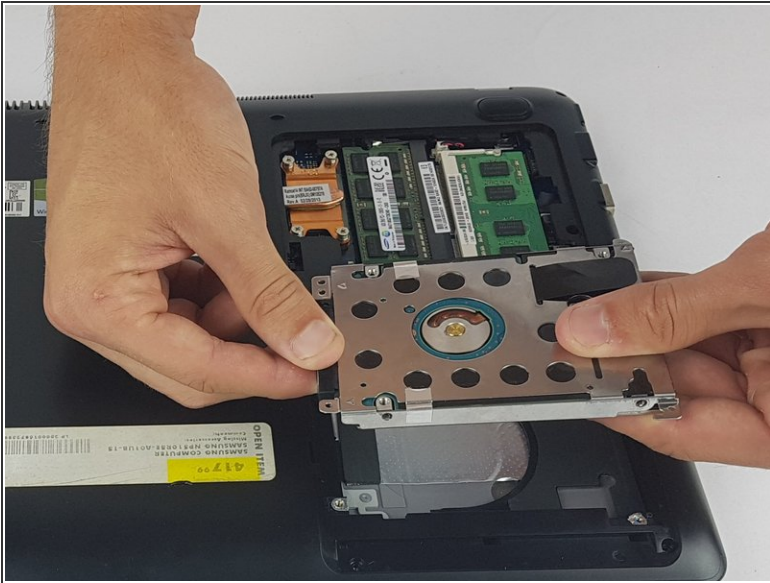
## Step 2



- With the cover removed, unscrew all four of the 4.75mm long screws using the Phillips #0 screwdriver.

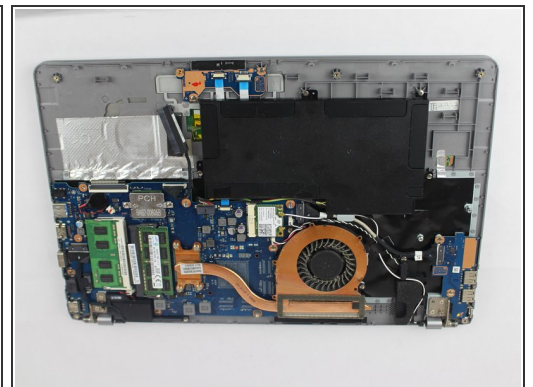


## Step 3



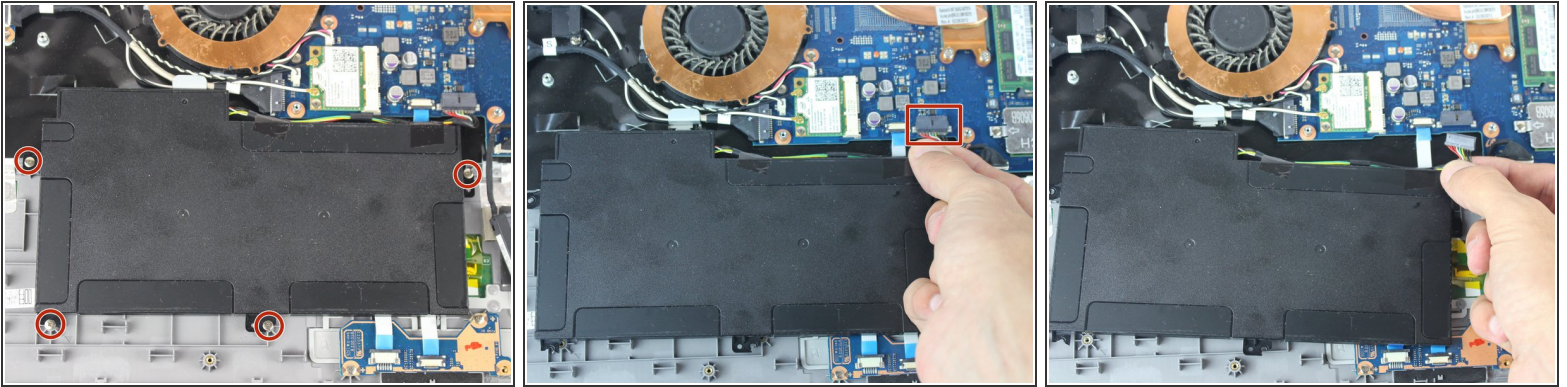
- Unplug the connector from the hard drive by pulling straight out.

## Step 4 — Battery



- Remove the two rubber feet with arrows by them on the back side to uncover two screws.
- Unscrew the four silver 4.4mm long screws near the hard drive.
- Unscrew the remaining nine black 6.5mm long screws. Then remove the back casing using a pry tool if needed.

## Step 5



- Use the screwdriver to remove the four 3.5mm long screws holding the battery in place. Then carefully pull the battery's connector cable out to remove the battery.

To reassemble your device, follow these instructions in reverse order.