



BLU Life XL Battery Replacement

Blu Life XL (L050U) Battery Replacement.

Written By: James Whitlow

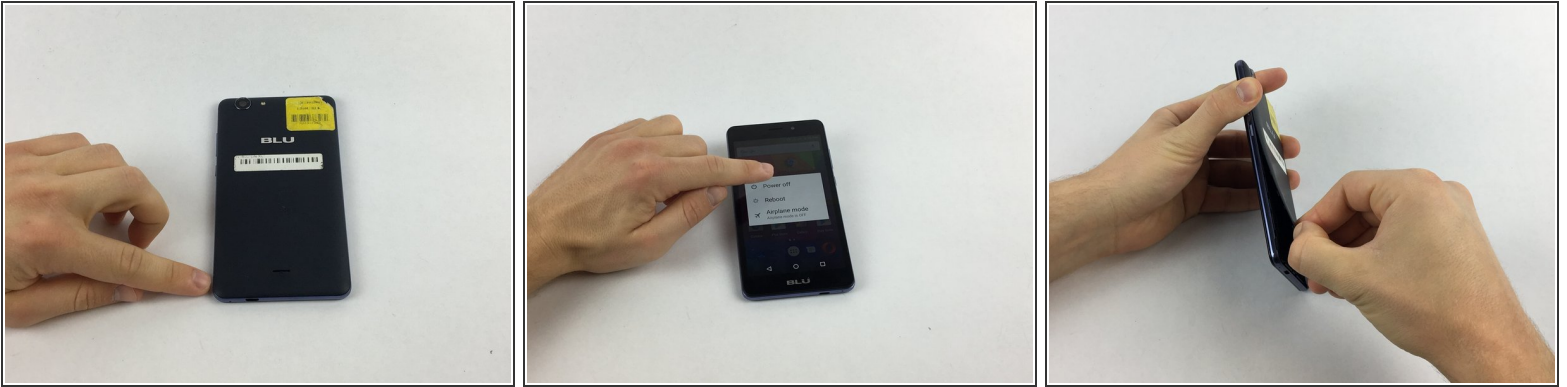


INTRODUCTION

Bring life back to your Blu Life XL with a new battery. This guide instructs you to detach the rear panel assembly and replace the battery.

For optimal performance, calibrate your newly installed battery: Drain battery below 10%, then charge uninterrupted to 100%.

Step 1 — Battery



- Turn the device off by holding down the power button for up to 5 seconds and then tapping the "Power off" button on the screen.
- Remove the rear cover using your hands at the lip on the device back cover. No tools required.

Step 2



- Remove the old battery.
- ⓘ For optimal performance, calibrate your newly installed battery: Drain battery below 10%, then charge uninterrupted to 100%.

To reassemble your device, follow these instructions in reverse order.