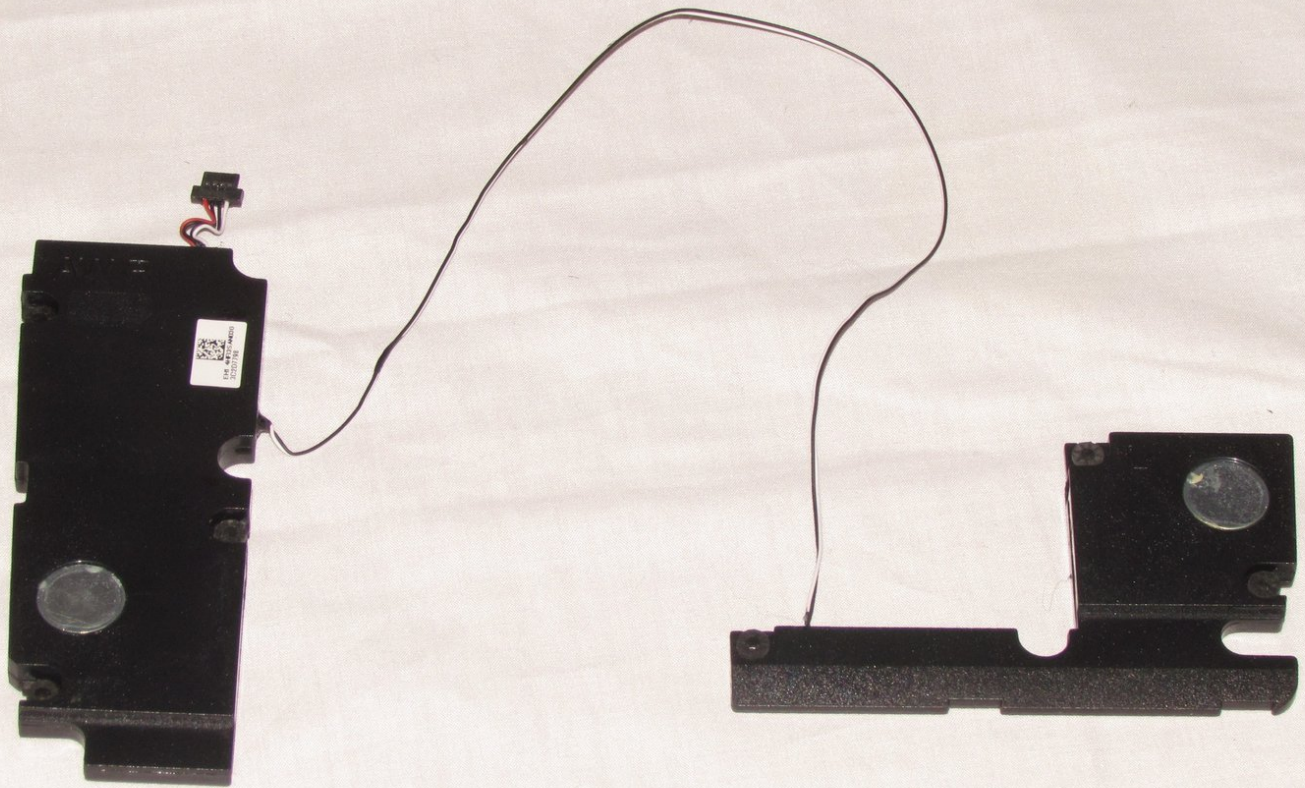




Sony Vaio Fit SVF15N26CXB Speaker Replacement

Replace the Sony Vaio Fit SVF15N26CXB speaker to restore audio capability.

Written By: Althea McDavid



INTRODUCTION

There are two speaker components (left and right sides) connected by a wire running under the battery. This guide will show the user how to properly remove the speakers from the Sony Vaio Fit SVF15N26CXB. This may be necessary if there is an issue with sound. Use the static wrist strap (shown in the guide) as a precautionary measure. Use the project mat to keep the screws organized.



TOOLS:

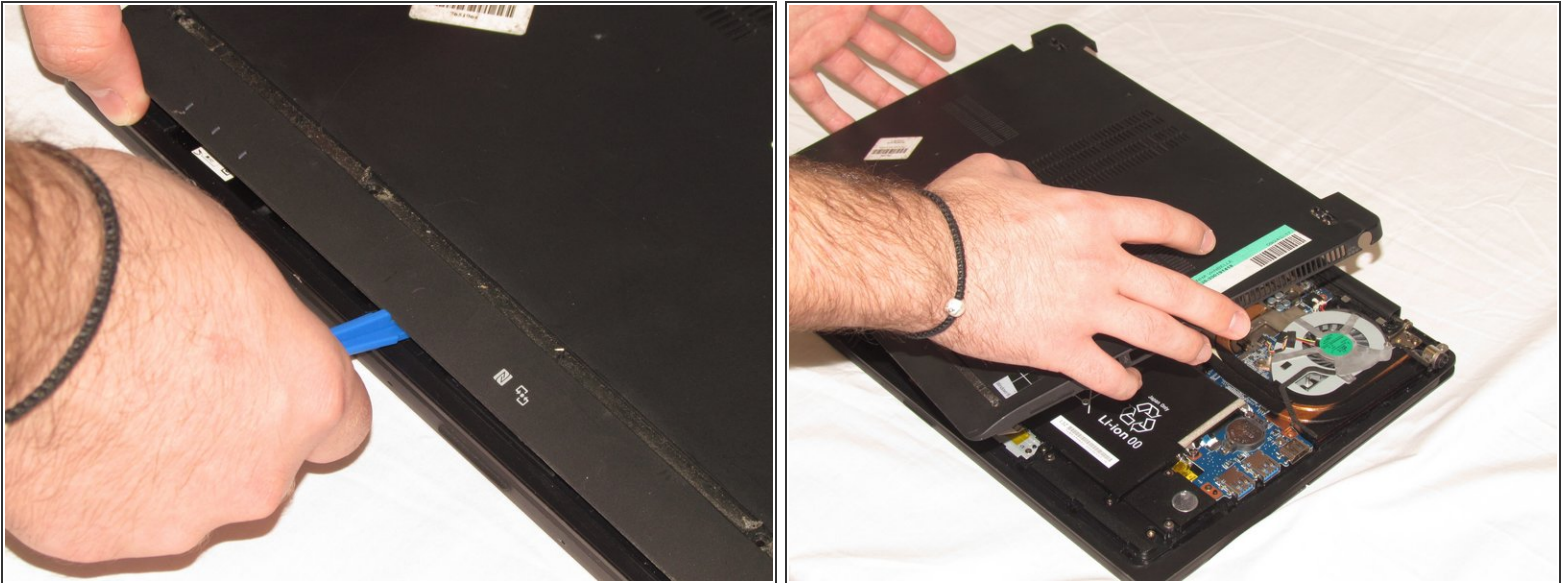
- [iFixit Opening Tools](#) (1)
- [Anti-Static Wrist Strap](#) (1)
- [Magnetic Project Mat](#) (1)
- [Tweezers](#) (1)
- [Phillips #00 Screwdriver](#) (1)

Step 1 — Battery



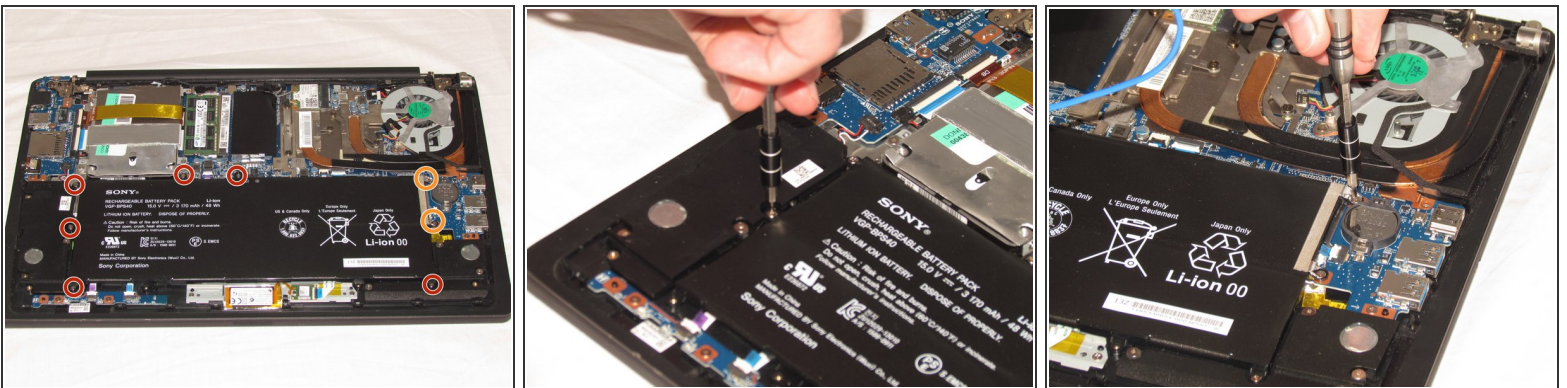
- Remove the following ten screws from the bottom case of the laptop:
 - Two 6.5mm Phillips #00 Phillips screws.
 - Four 8.95mm Phillips #00 screws.
 - Four 6.25mm Phillips #00 screws.
- ⓘ The screws may be hidden underneath a rubber foot that can be removed with a spudger.

Step 2



- Use a plastic opening tool to separate the bottom cover from the laptop.
- Lift the lower cover and pull away from the laptop.

Step 3



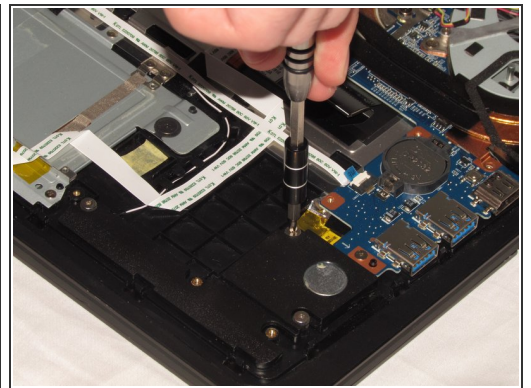
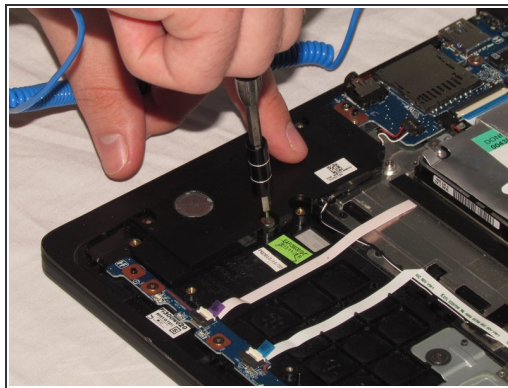
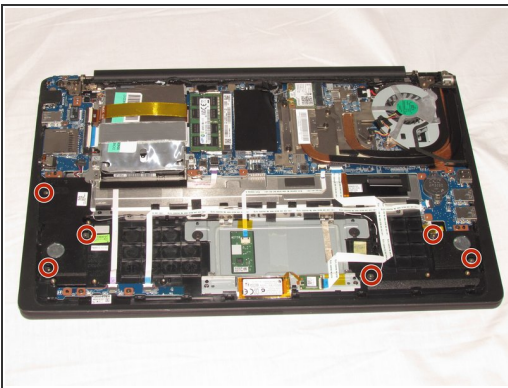
- Remove the eight Phillips #00 screws from the battery:
 - Six 4.65mm screws.
 - Two 4.65mm screws.

Step 4



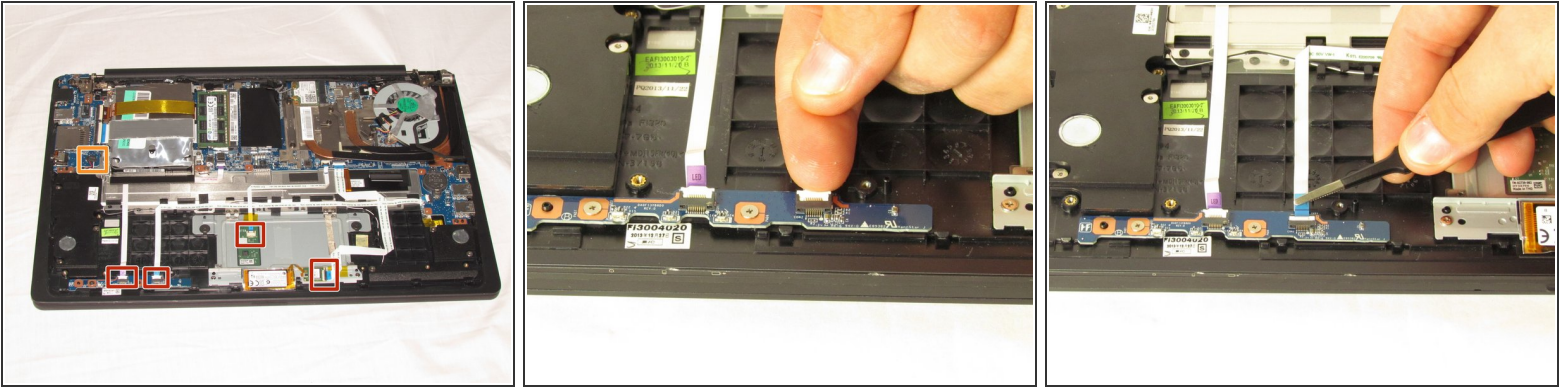
- Lift the battery up and pull it out of the laptop.

Step 5 — Speaker



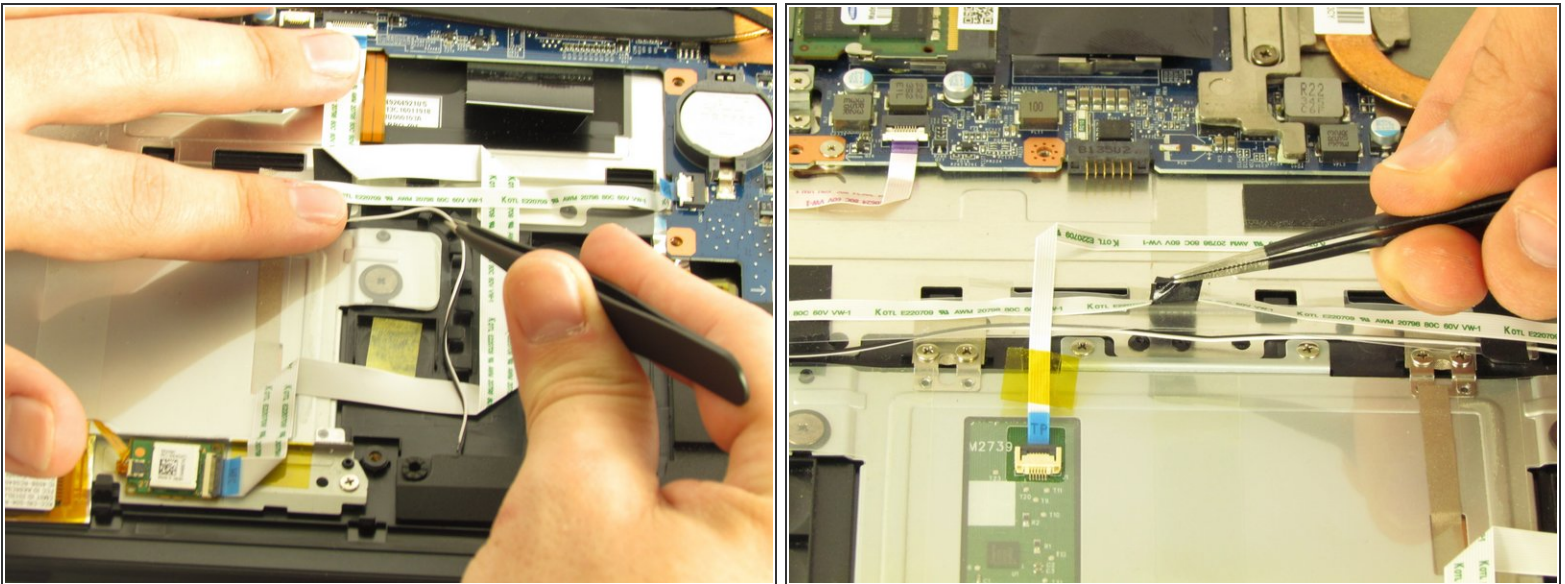
- Remove six 5.75mm Phillips #00 screws from the speakers.

Step 6



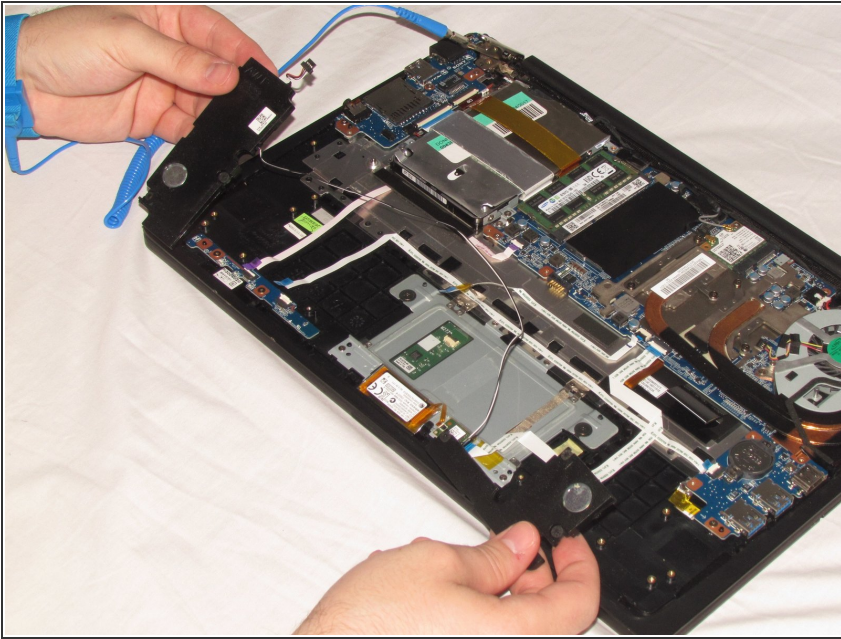
- Use a spudger to flip up the black latch on the four ZIF connectors.
- Remove the four ribbon cables from the ZIF connectors.
- Disconnect the speaker from the board.

Step 7



- Using tweezers, carefully unwind the speakers' wires from the plastic brackets holding them.
- Where the wire is stuck under tape, gently pull the tape up until the wire is free.
- ⓘ Do not remove the tape.

Step 8



- Remove the speakers by picking the left and right pieces up and lifting them up and out of the computer.

To reassemble your device, follow these instructions in reverse order.