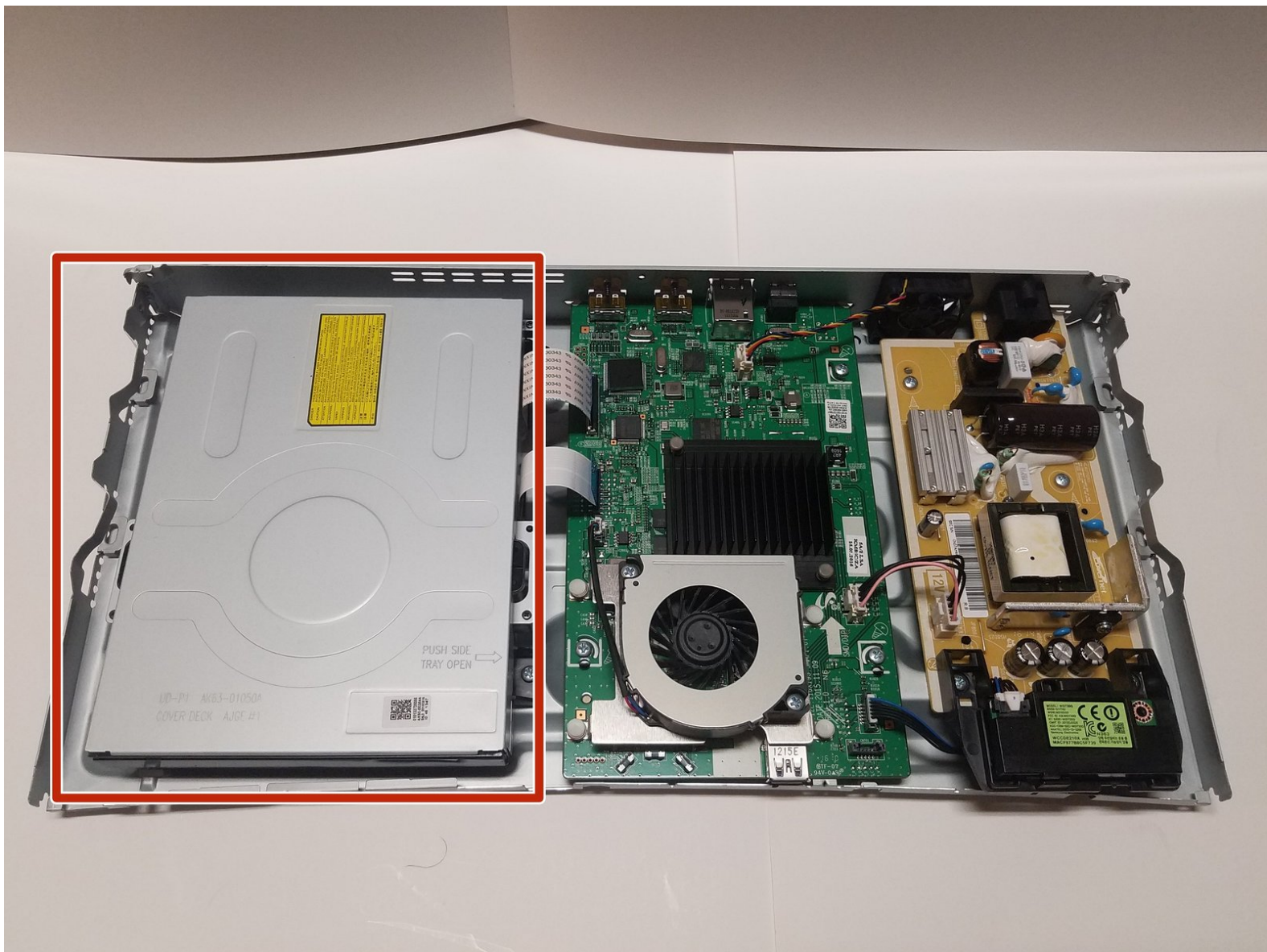




# Samsung UBD-KM85C Disc Drive Replacement

When the Disc Drive is unable to play the DVD mediums that it otherwise should be able to, this guide will help to replace it.

Written By: James Edwards



---

## INTRODUCTION

Use this guide to replace the disc drive in your Samsung UBD-KM85C.



### TOOLS:

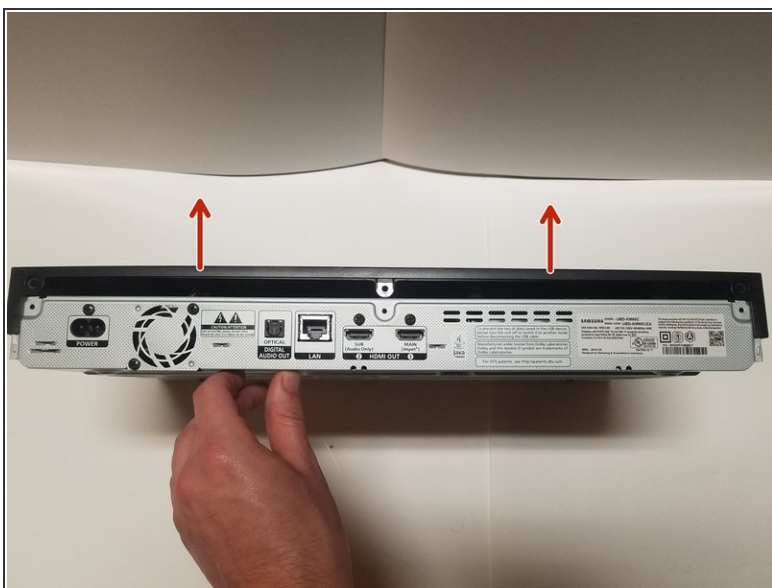
- [Phillips #1 Screwdriver](#) (1)
-

## Step 1 — Outer Shell



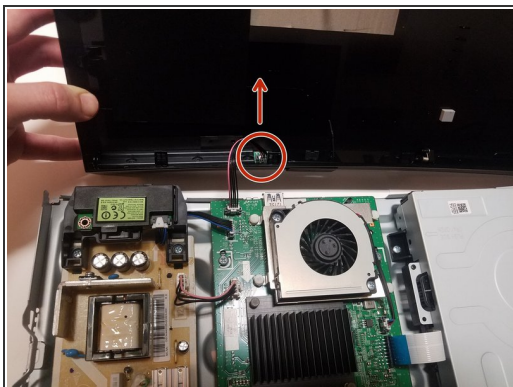
- On the back side of the unit, remove the three 8.1mm screws marked with a Phillips #1 screwdriver.

## Step 2



- From the back, lift the case upwards away from the unit then forwards, releasing the prongs on the front.

## Step 3



- There is one group of wires located towards the front of the case and attached directly to the motherboard and the case. Using two fingers in a pinching motion, release the wire from the clip and disconnect it.

## Step 4



- Remove the cover from the device.

## Step 5 — Disc Drive



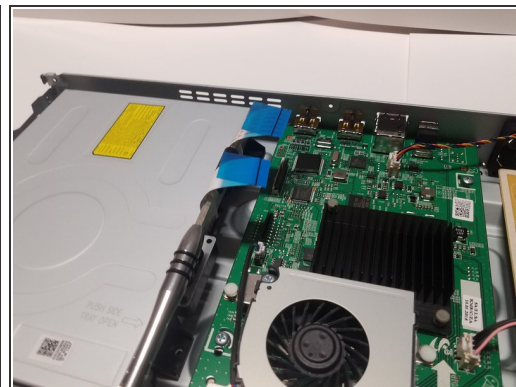
- The disk drive is the large metallic rectangular unit that occupies a third of the space inside the unit.

## Step 6



- The disk drive has four 6.5mm screws located near each of its corners that hold it onto the frame. Use a #1 Phillips head screwdriver to remove these screws.

## Step 7



- The disk drive has two connections to the motherboard that can be disconnected by pulling on the blue plastic tabs.

## Step 8



- Once the connections are unplugged and the screws are removed, the disk drive can be lifted out. The previous steps can be done in the reverse order to replace the part.

To reassemble your device, follow these instructions in reverse order.