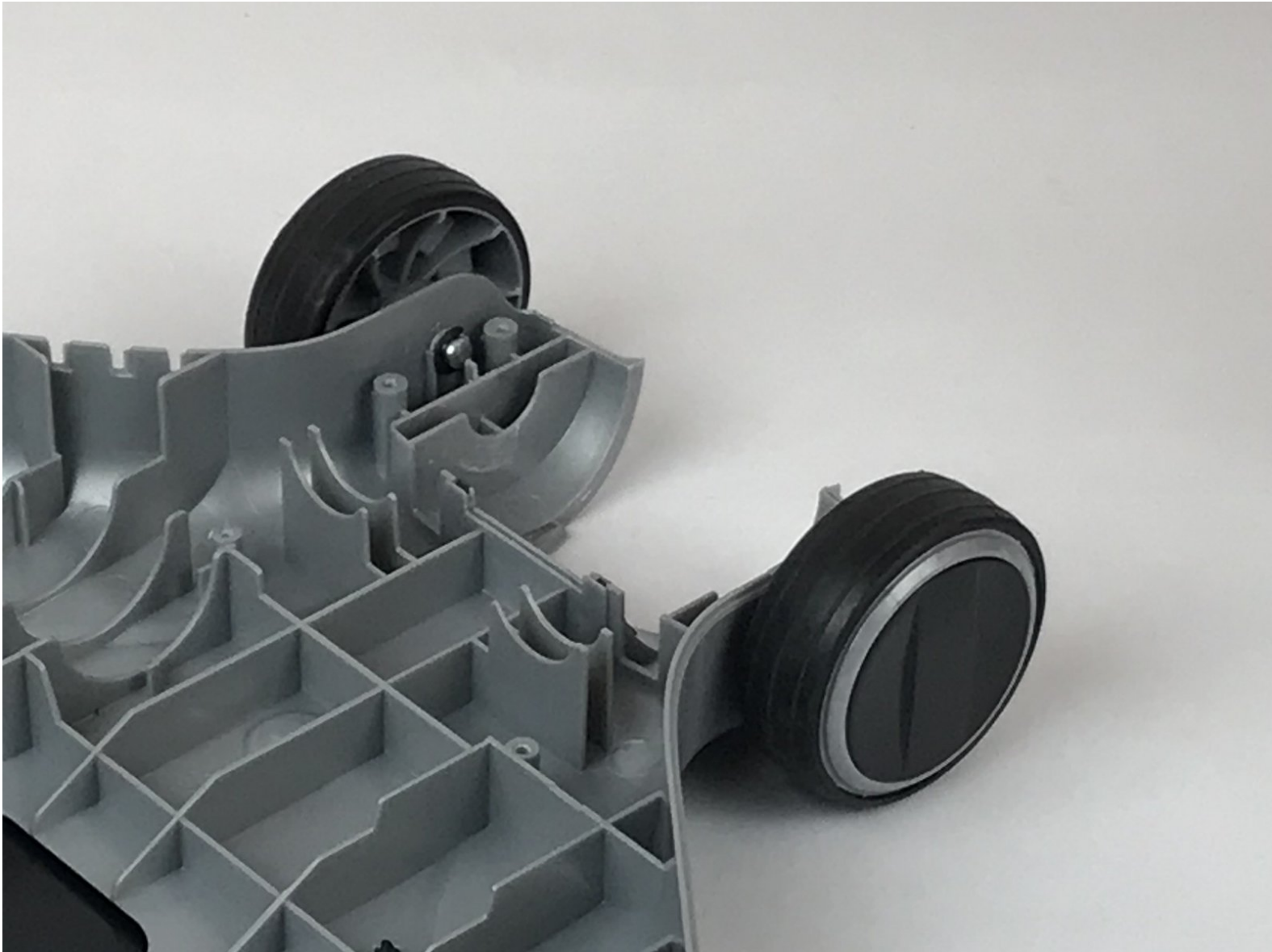




Hoover LiNX Wheel Replacement

Replace broken or cracked wheels in the Hoover LiNX.

Written By: Sara Vlhova



INTRODUCTION

This guide will show you how to replace the wheels of your device. This would be needed if your device fails to roll on the flooring or if they simply broke apart. Be sure to remove the battery from the device and switch the power off.



TOOLS:

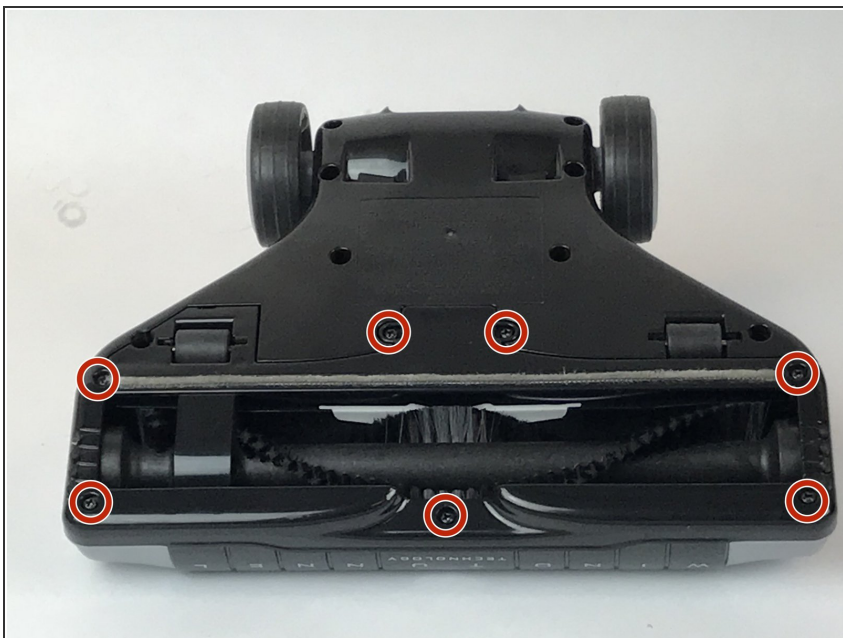
- [Phillips #1 Screwdriver](#) (1)
 - [iFixit Opening Tools](#) (1)
-

Step 1 — Replace The Motor



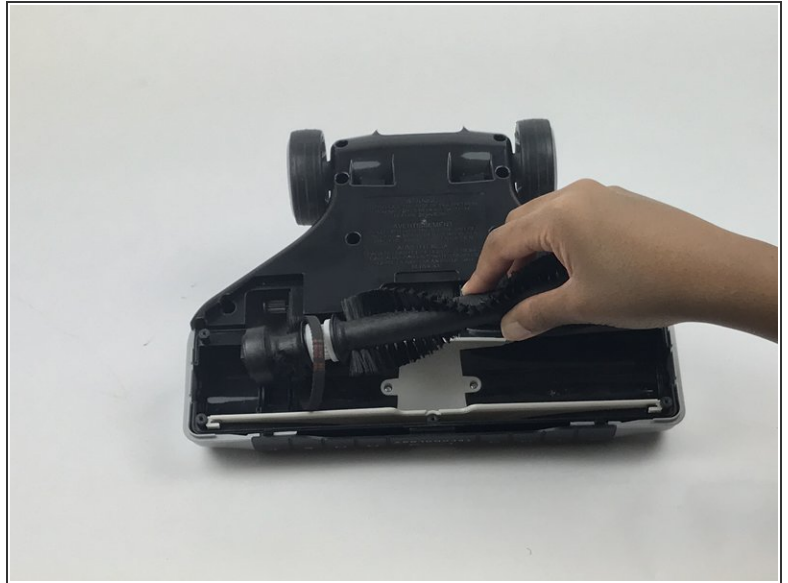
- Detach the rolling assembly from the body by pushing the button found at the base.

Step 2



- Remove the seven 7.5mm Phillips #1 screws from the brush retainer.

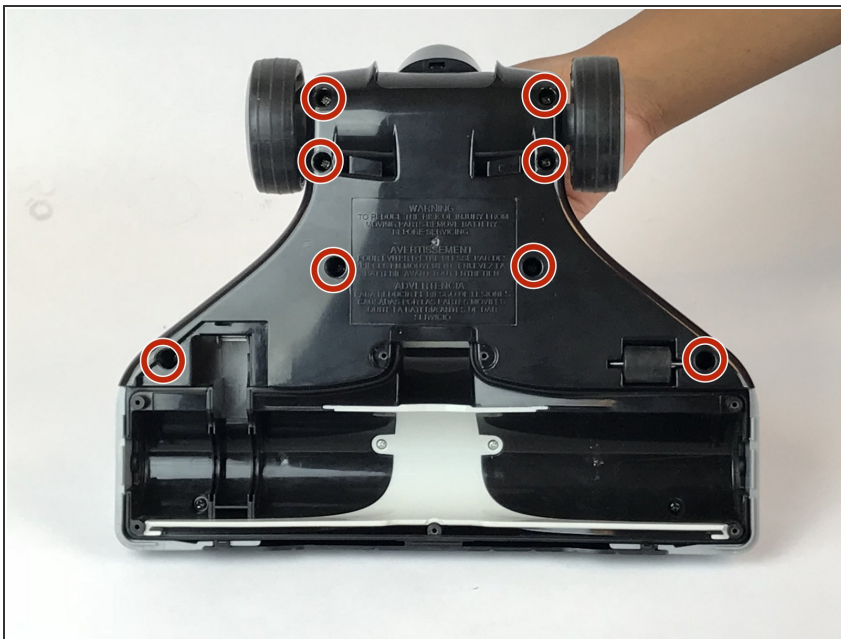
Step 3



- Remove the brush and retainer from the rolling assembly.

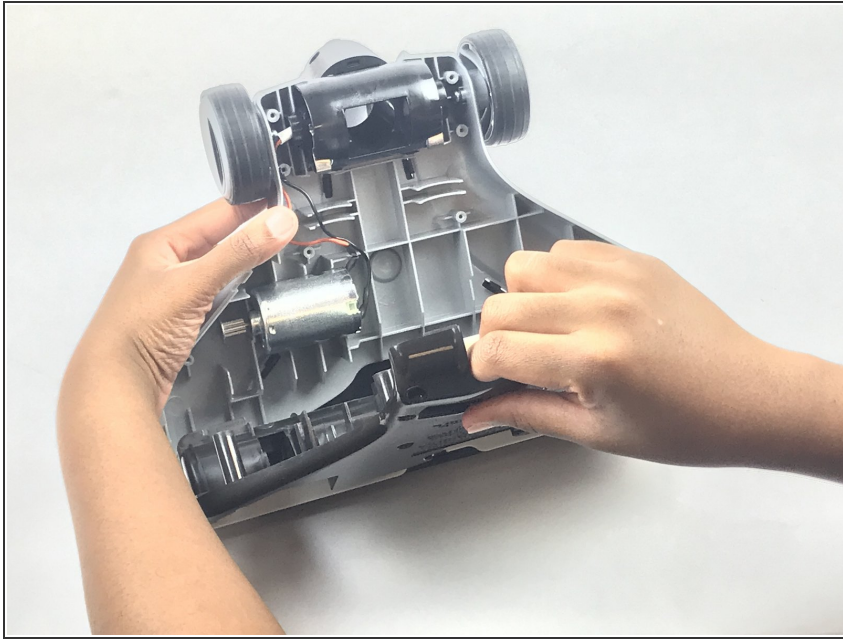
i The brush will need to be disconnected from the belt.

Step 4



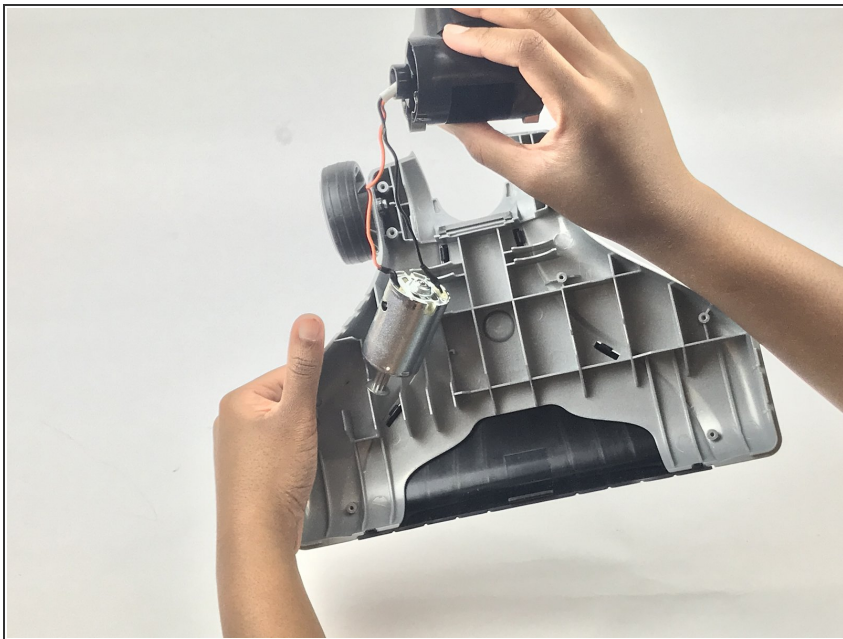
- Remove the eight 4mm Phillips #1 screws from the bottom panel.

Step 5



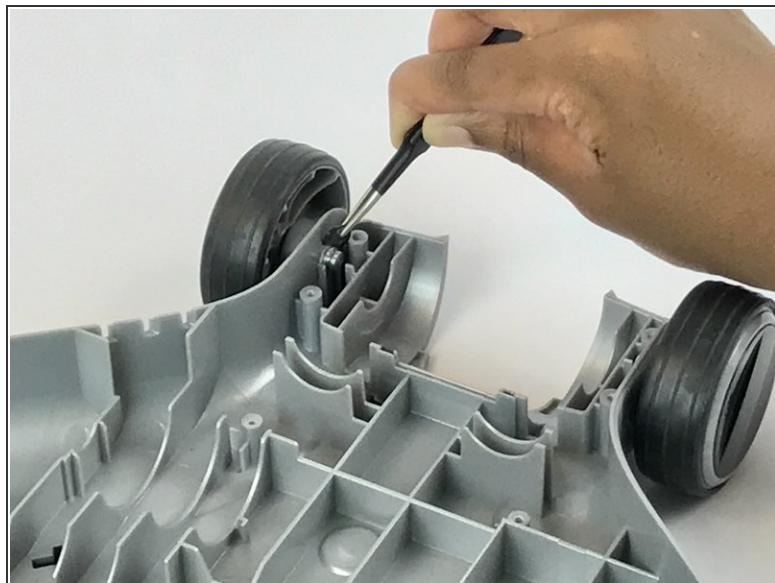
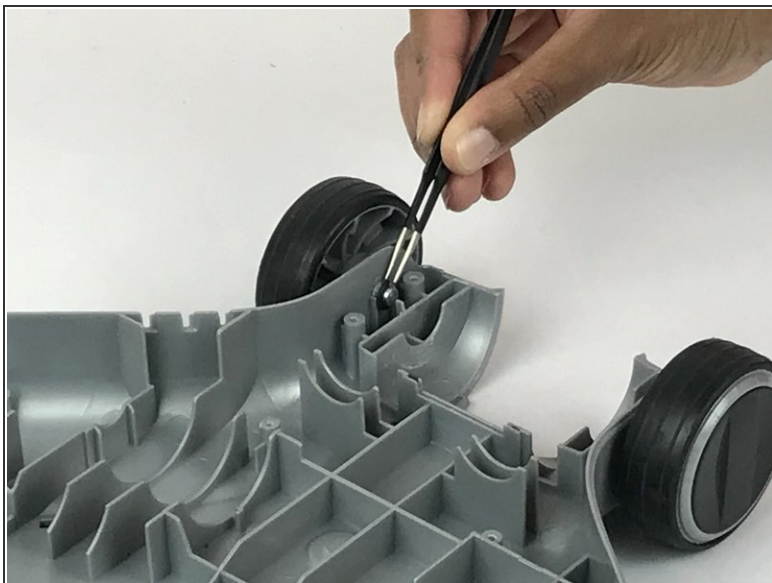
- Remove the bottom panel.

Step 6



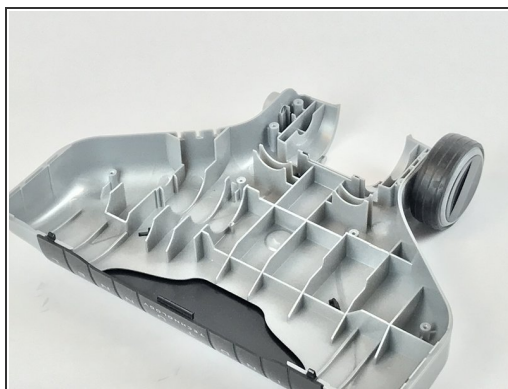
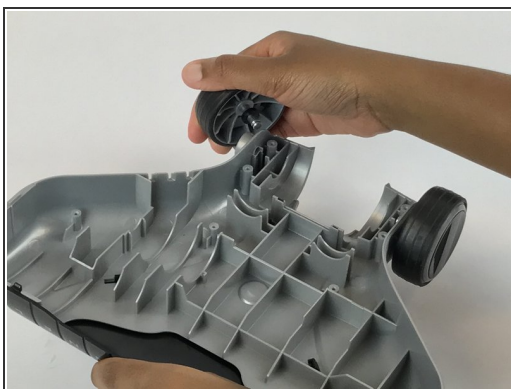
- Remove the motor.

Step 7 — Wheel



- Remove the black plastic clamp from inside the wheel axle.

Step 8



- Remove broken wheel and replace.

To reassemble your device, follow these instructions in reverse order.