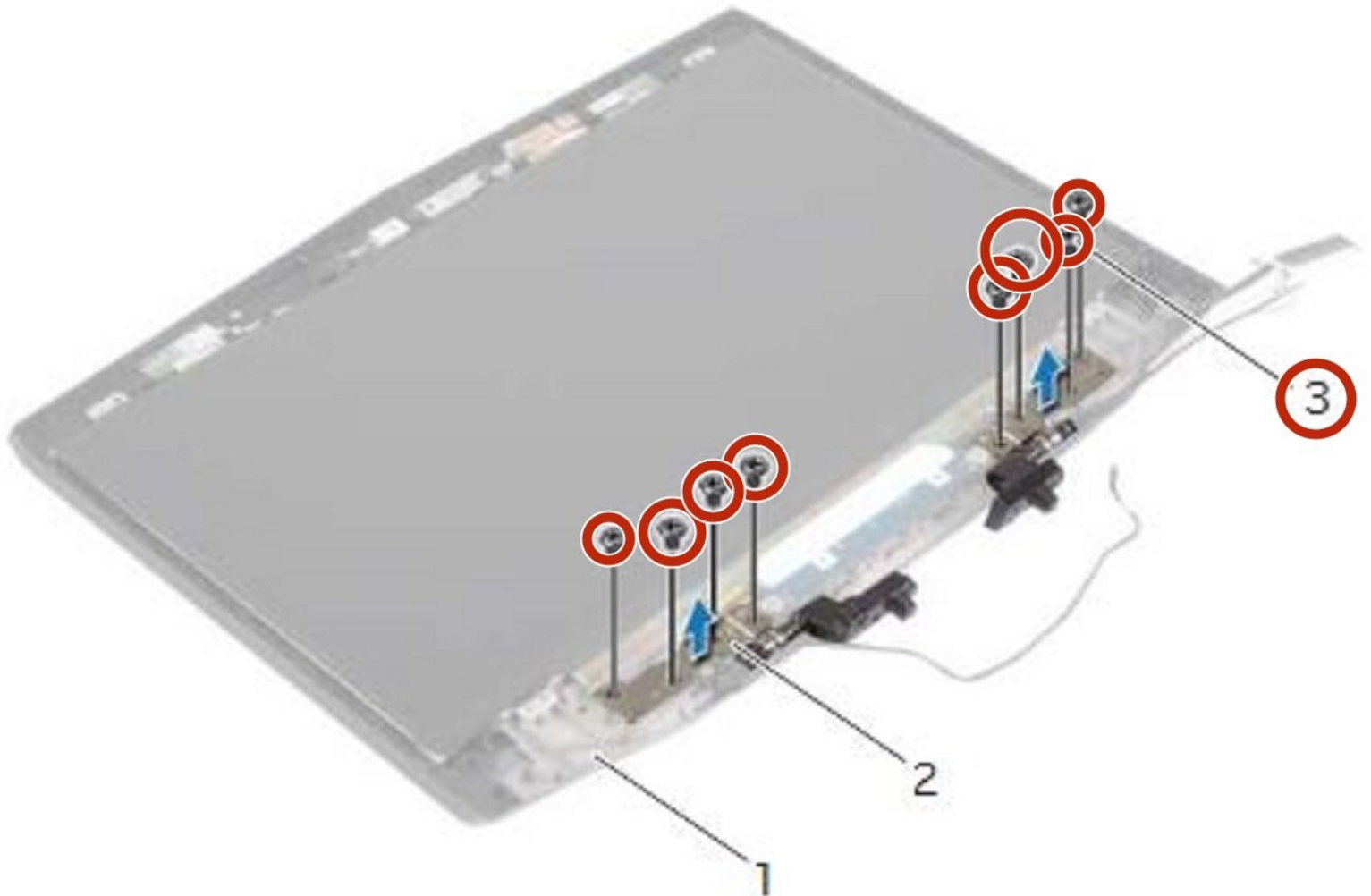




Dell Alienware 14 Display Hinges Replacement

Follow this guide to replace the display hinges for the Dell Alienware 14.

Written By: Terrence15



INTRODUCTION

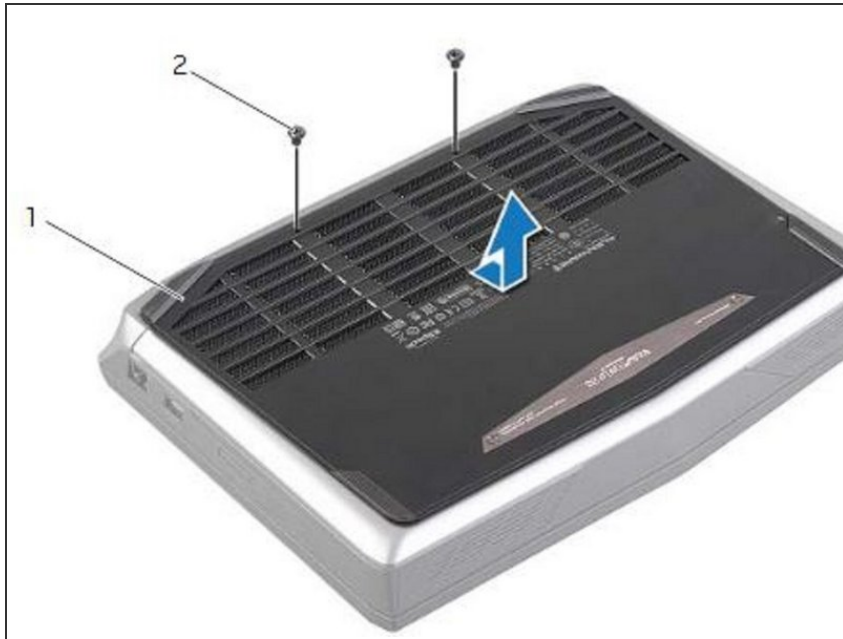
In this guide, we will show you how to remove and replace the Display Hinges.



TOOLS:

- [Pro Tech Toolkit](#) (1)
-

Step 1 — Close the Display



⚠ WARNING: Before working inside your computer, read the safety information that shipped with your computer and follow the steps in [Before You Begin](#). After working inside your computer, follow the instructions in [After Working Inside Your Computer](#).

- Close the display, and turn the computer over.

Step 2 — Remove the Screws



- Remove the screws that secure the base cover to the computer base.

Step 3 — Slide and Lift the Base Cover



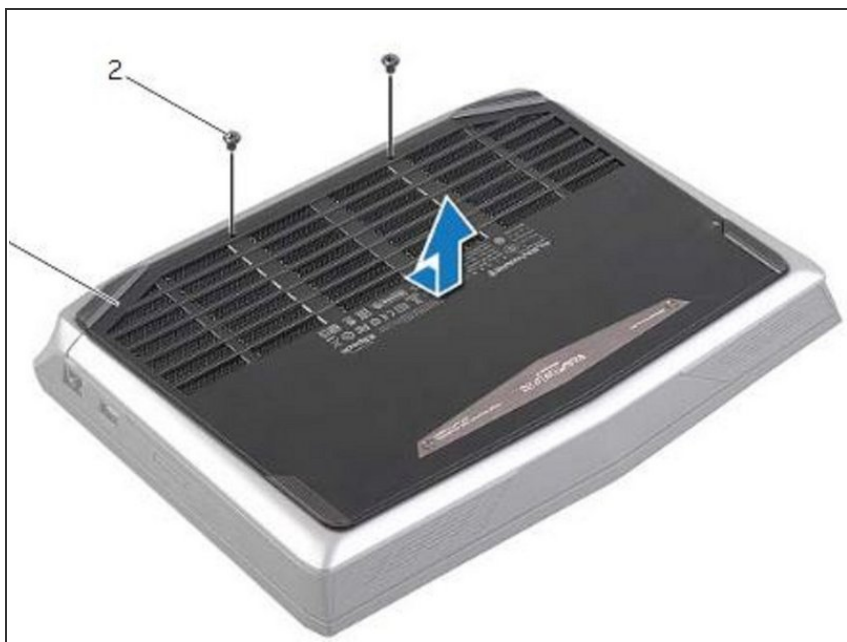
- Slide and lift the base cover off the computer base.

Step 4 — Align the Tabs



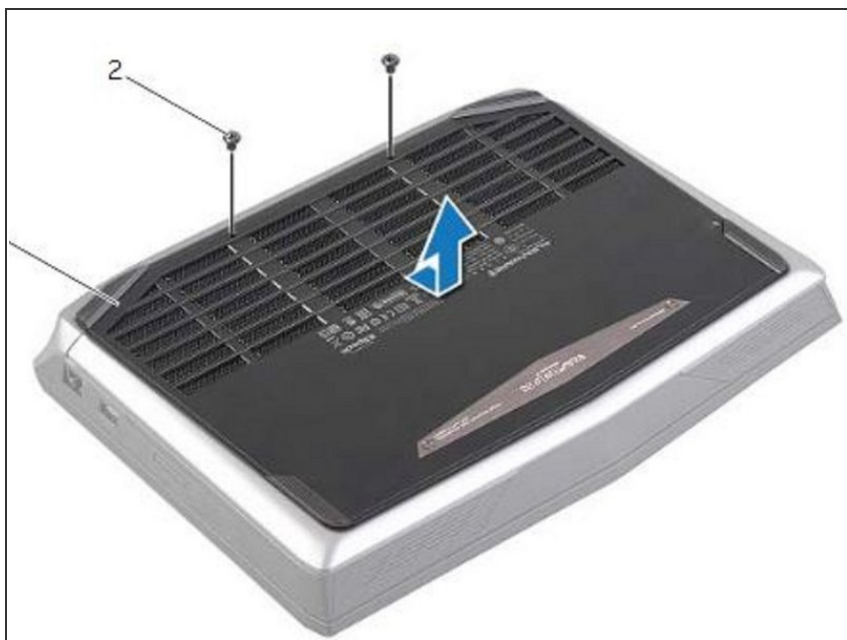
- Align the tabs on the **NEW** base cover with the slots on the computer base and slide the base cover into place.

Step 5 — Replace the Screws



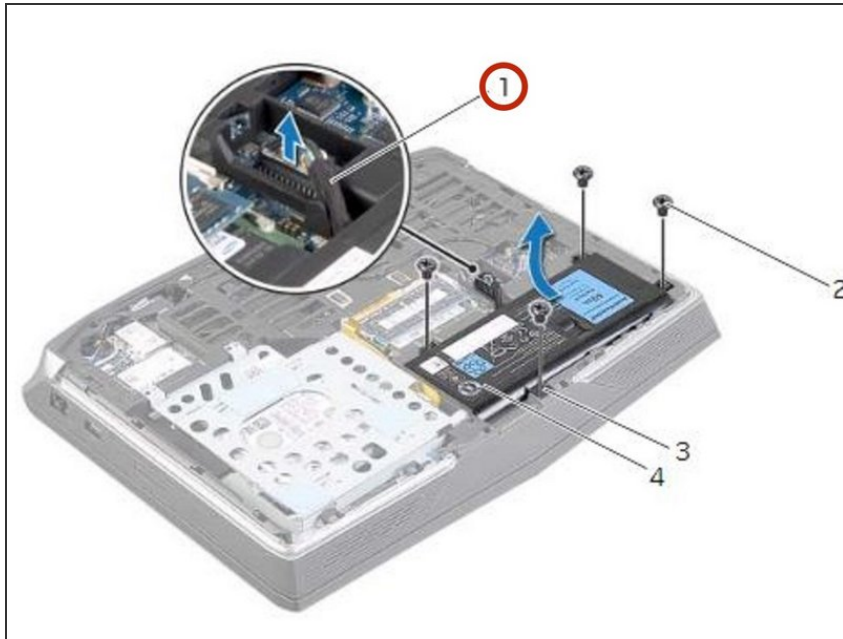
- Replace the screws that secure the base cover to the computer base.

Step 6 — Turn the Computer Over



- Turn the computer over and open the display.

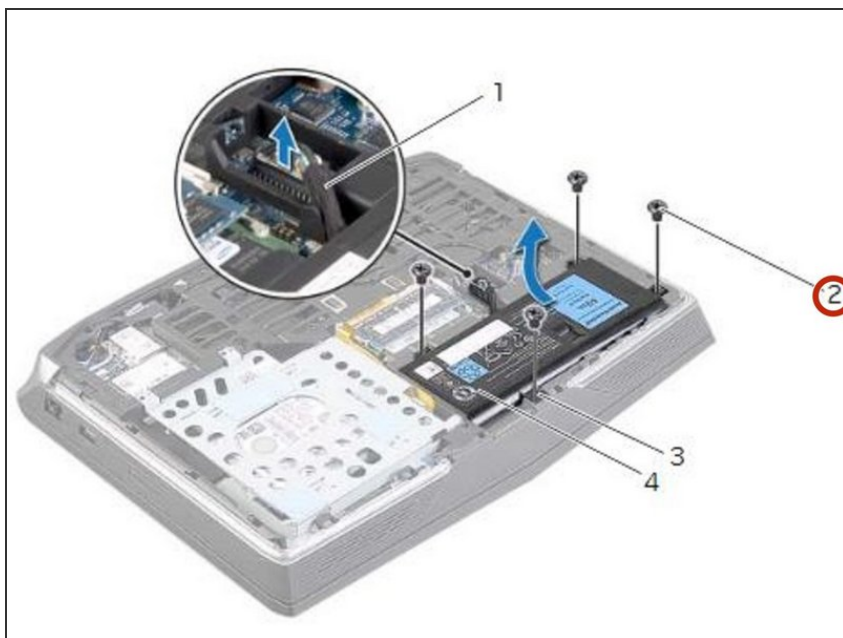
Step 7 — Disconnecting the Battery Cable



⚠ WARNING: Before working inside your computer, read the safety information that shipped with your computer and follow the steps in [Before Working Inside Your Computer](#). After working inside your computer, follow the instructions in [After Working Inside Your Computer](#).

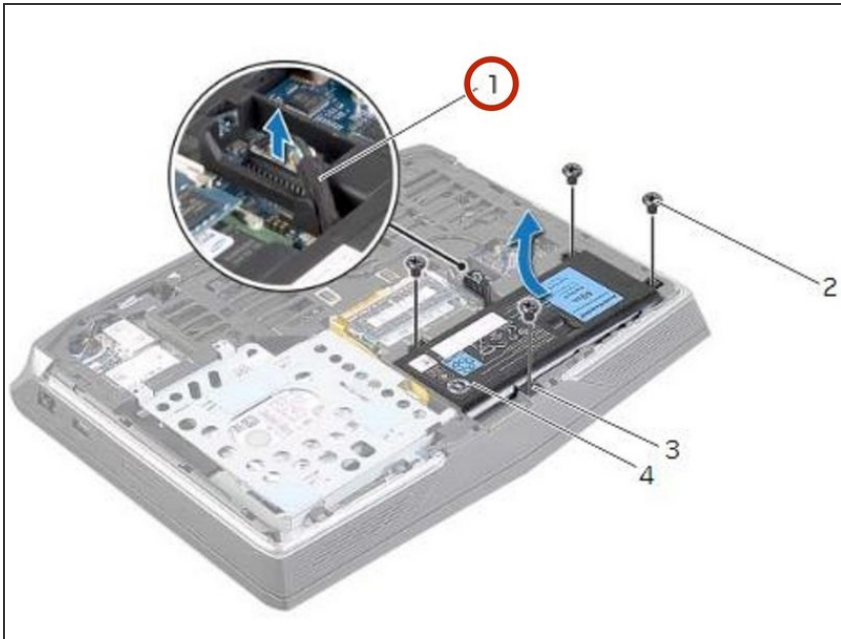
- Disconnect the battery cable from the system-board connector.

Step 8 — Remove the Screws



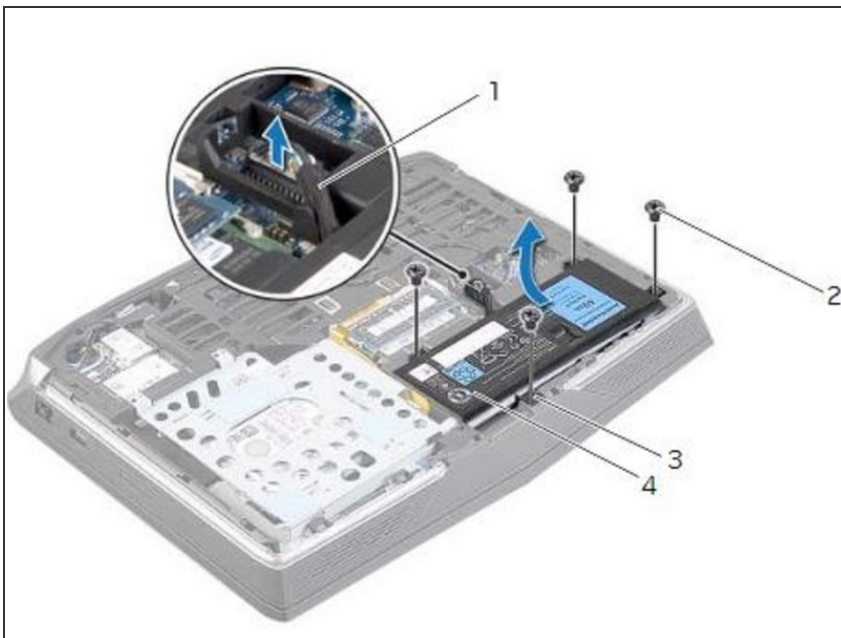
- Remove the screws that secure the battery to the computer base.

Step 9 — Using the Battery Cable



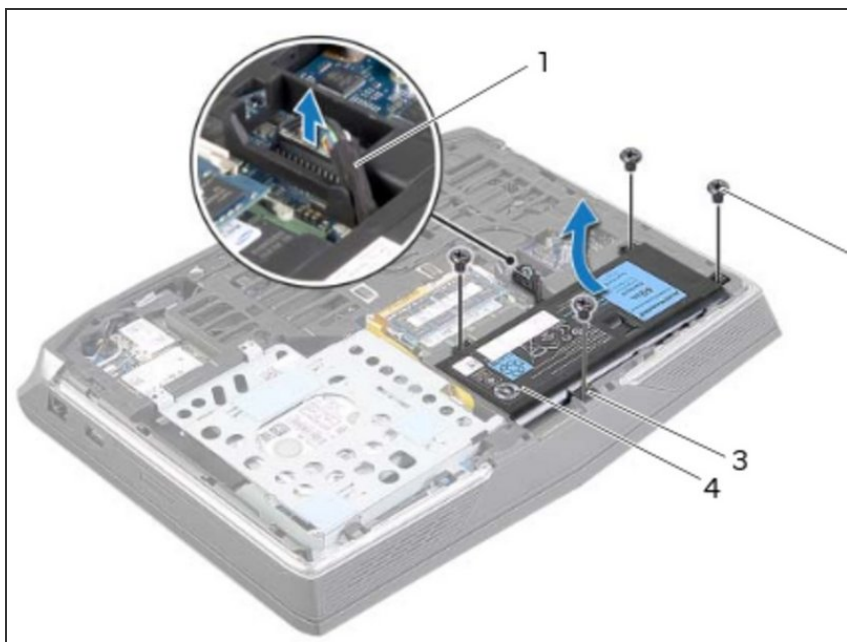
- Using the battery cable, lift the battery and release it from the tabs on the computer base.

Step 10 — Turn the Computer Over



- Turn the computer over and open the display as far as possible.

Step 11 — The Power Button



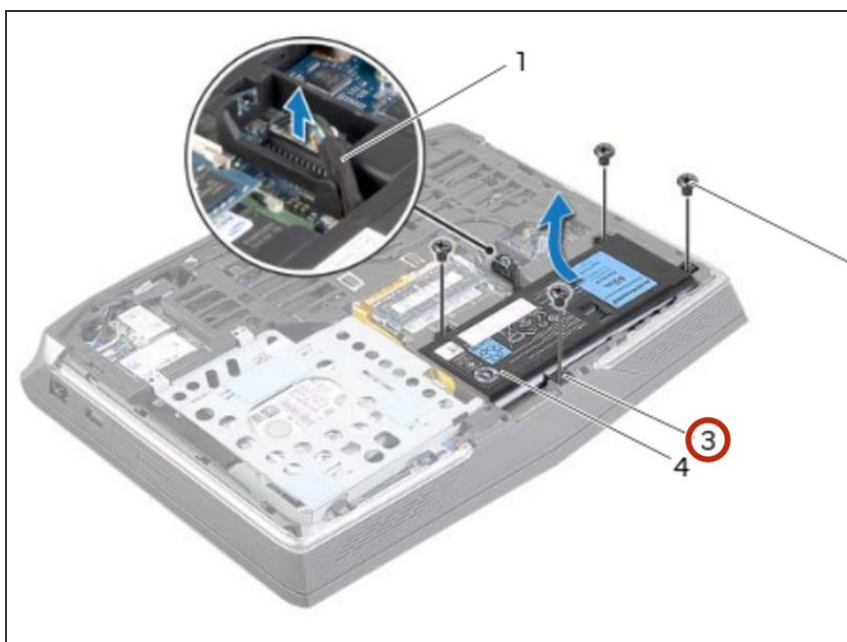
- Press and hold the power button for five seconds to ground the system board.

Step 12 — Close the Display



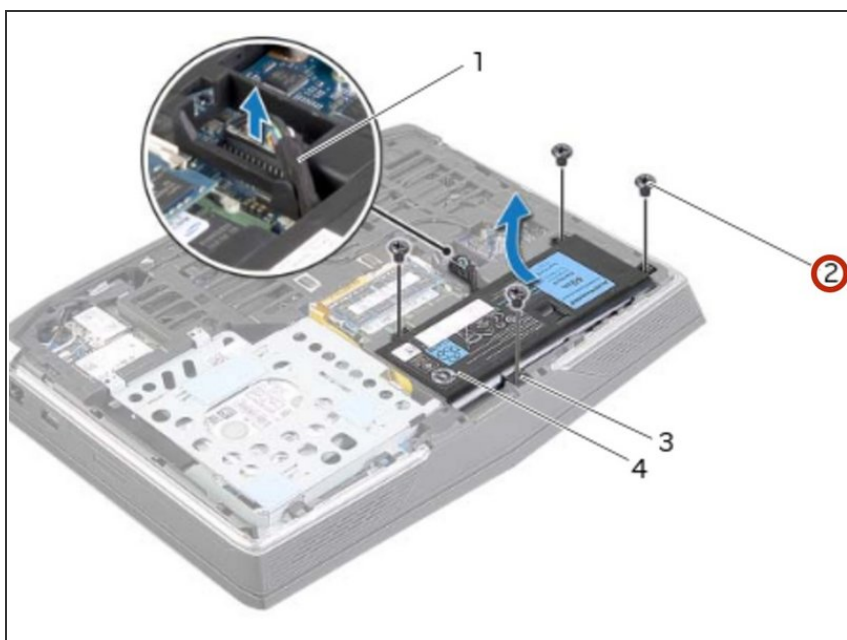
- Close the display and turn the computer over.

Step 13 — Align the Tabs



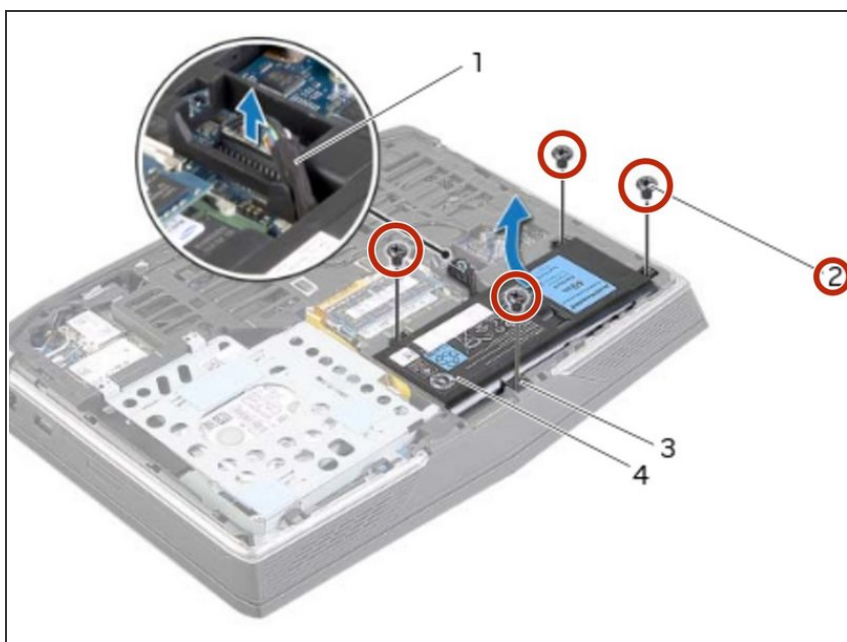
- Align the tabs on the **NEW** battery with the slots on the computer base.

Step 14 — Align the Screw Holes



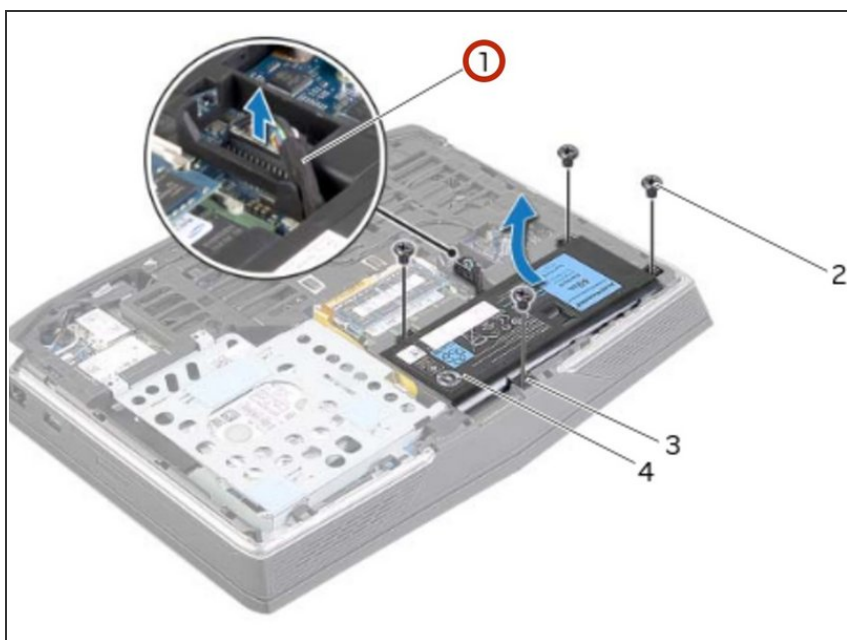
- Align the screw holes on the battery with the screw holes on the computer base.

Step 15 — Replace the Screws



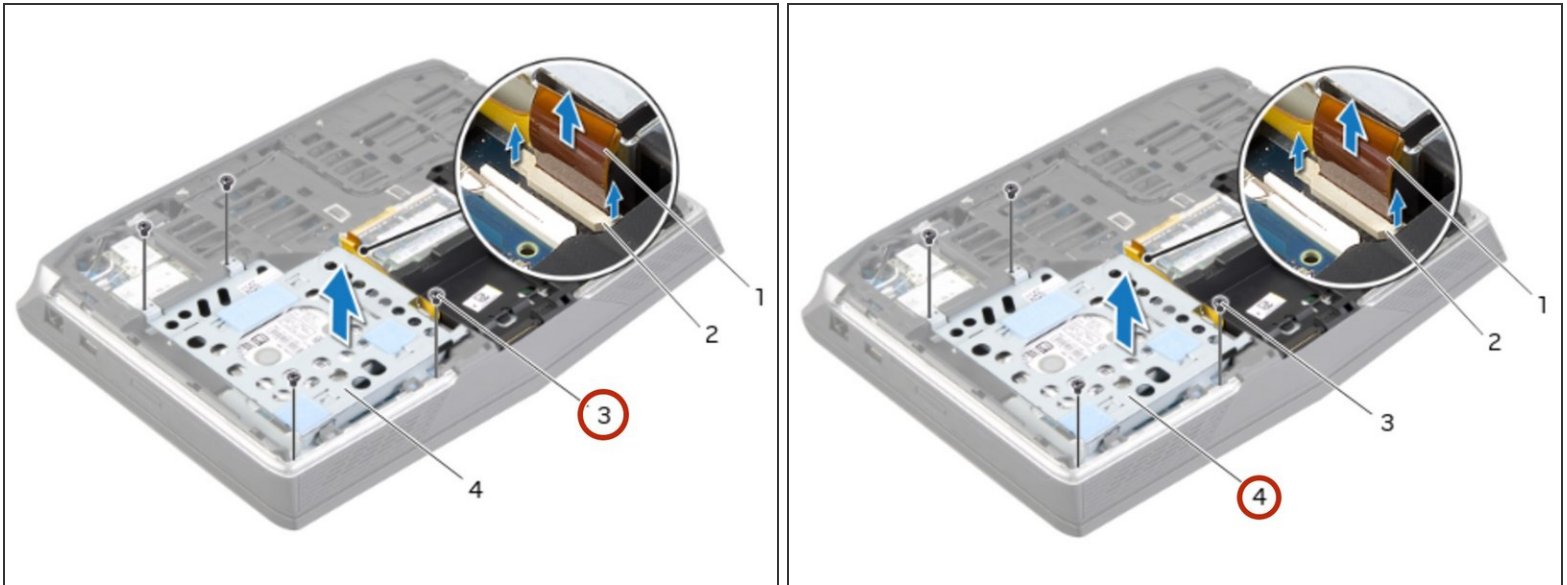
- Replace the screws that secure the battery to the computer base.

Step 16 — Connect the Battery Cable



- Connect the battery cable to the system-board connector.

Step 17 — Remove the Screws



⚠ WARNING: Before working inside your computer, read the safety information that shipped with your computer and follow the steps in [Before Working Inside Your Computer](#). After working inside your computer, follow the instructions in [After Working Inside Your Computer](#).

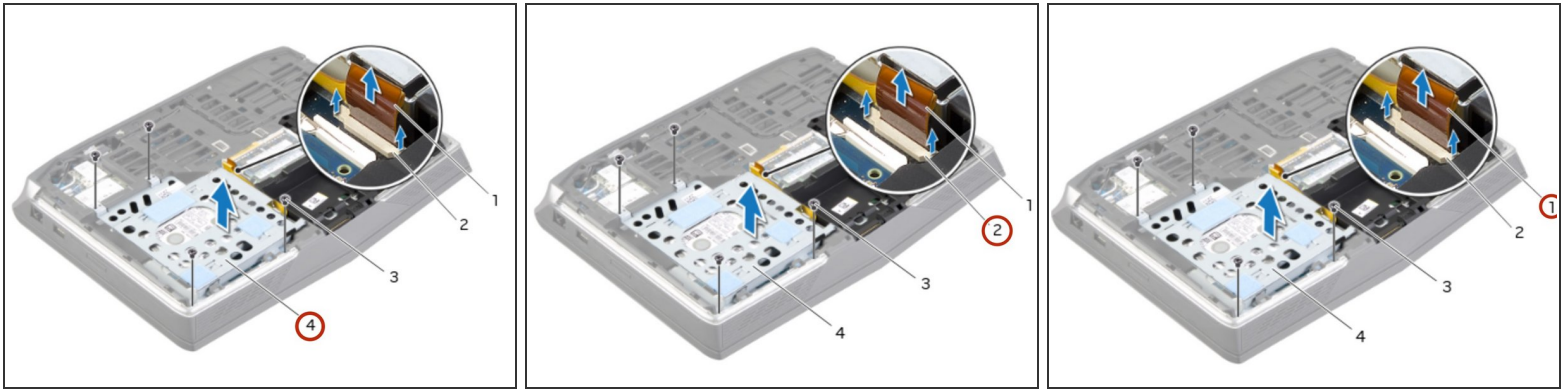
⚠ CAUTION: To avoid data loss, do not remove the hard drive while the computer is On or in Sleep state.

⚠ CAUTION: Hard drives are extremely fragile. Exercise care when handling the hard drive.

i NOTE: The secondary hard-drive or solid-state drive is optional and can be installed in the optical drive bay.

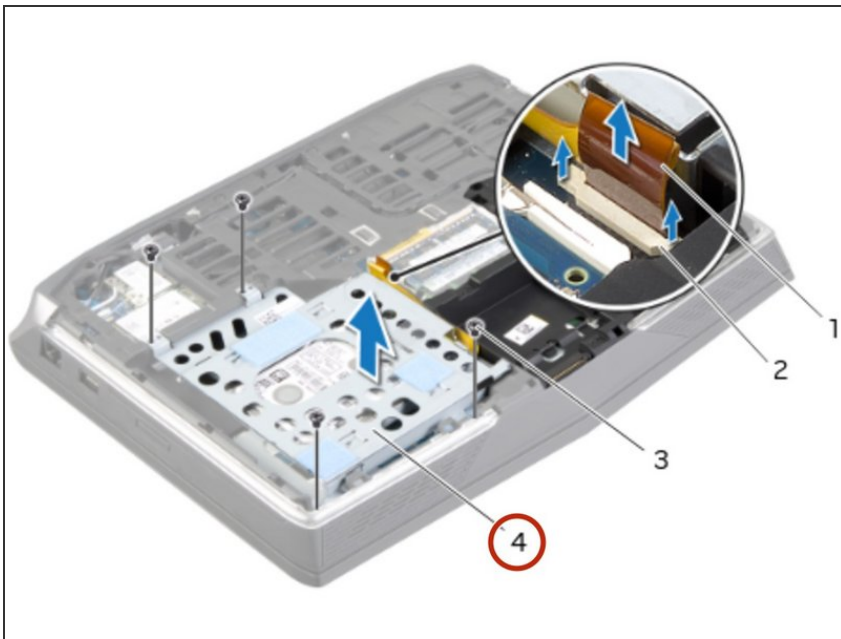
- Remove the screws that secure the secondary hard-drive assembly to the computer base.

Step 18 — Lifting the Secondary Hard-Drive



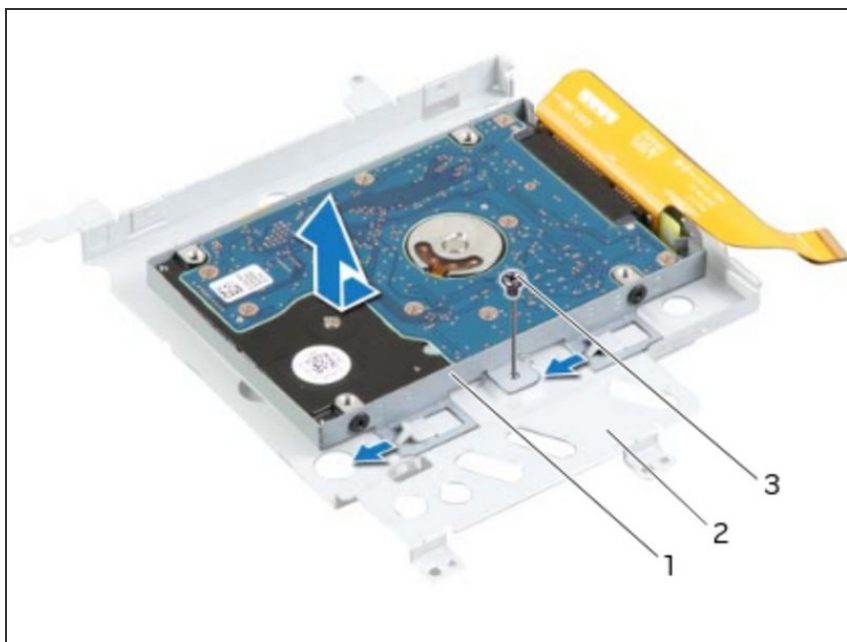
- Carefully lift the secondary hard-drive assembly and then lift the latches to release the secondary hard-drive cable from the system-board connector.

Step 19 — Lifting the Hard Drive



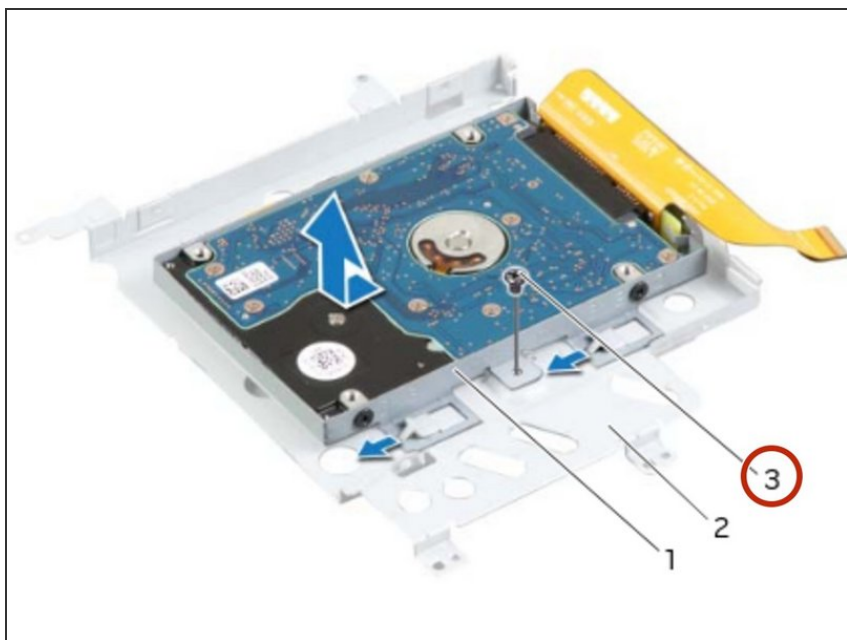
- Lift the secondary hard-drive assembly off the computer base.

Step 20 — Turn the Assembly Over



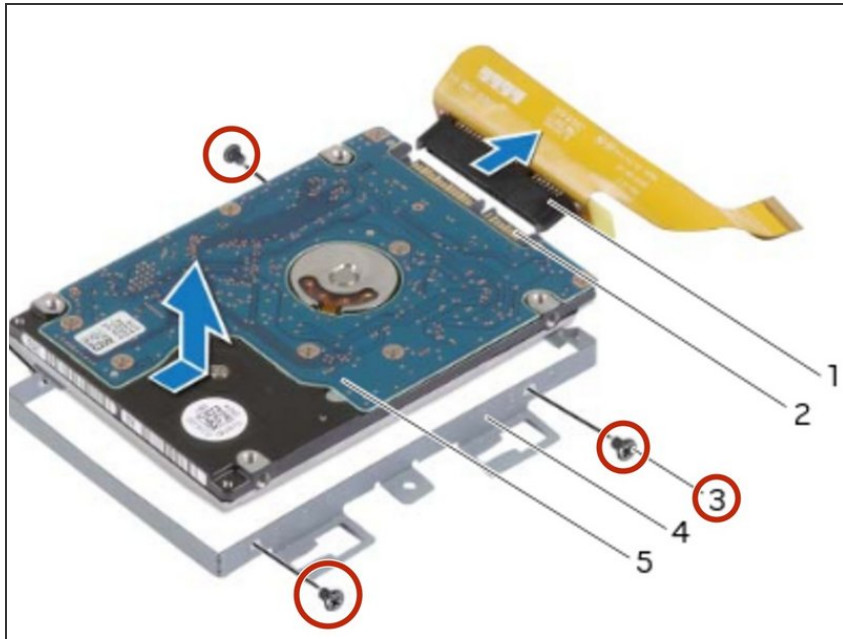
- Turn the secondary hard-drive assembly over.

Step 21 — Remove the Screw



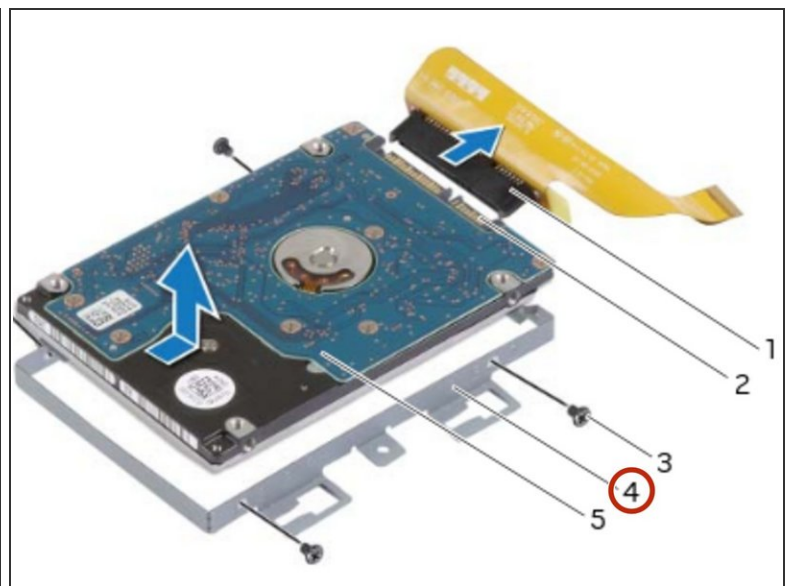
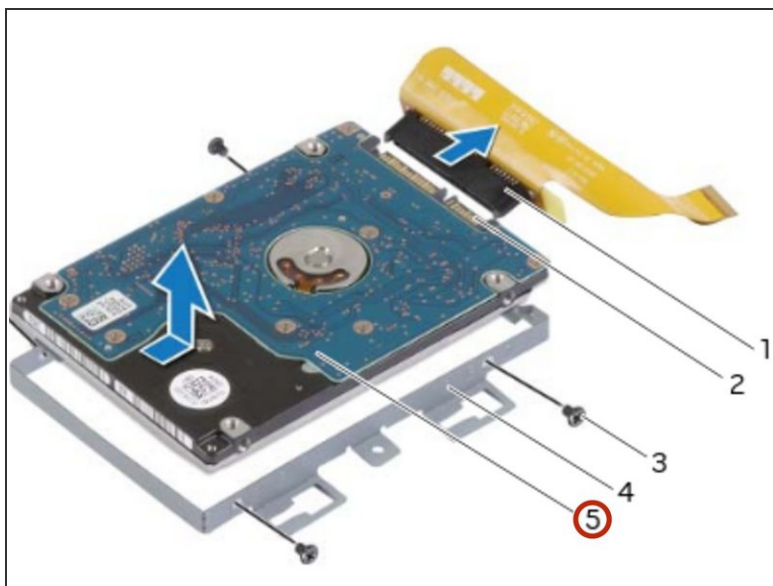
- Remove the screw that secures the secondary hard-drive assembly to the main bracket.

Step 22 — Remove the Screws



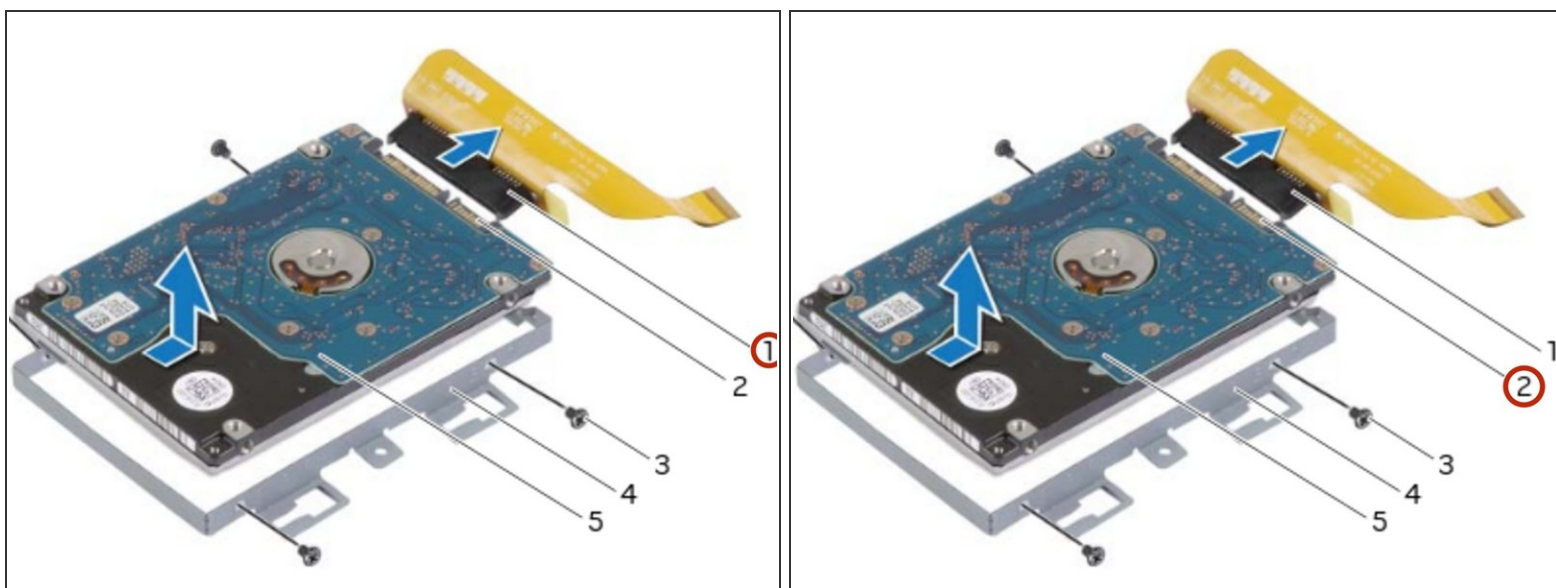
- Remove the screws that secure the secondary hard-drive to the secondary hard-drive bracket.

Step 23 — Slide and Lift the Hard-Drive



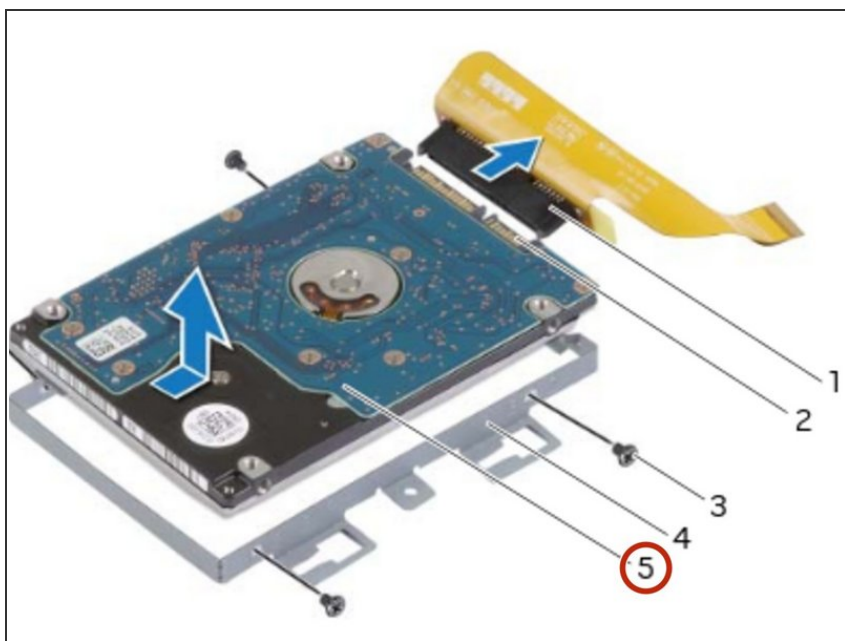
- Slide and lift the secondary hard-drive off the secondary hard-drive bracket.

Step 24 — Disconnect the Interposer



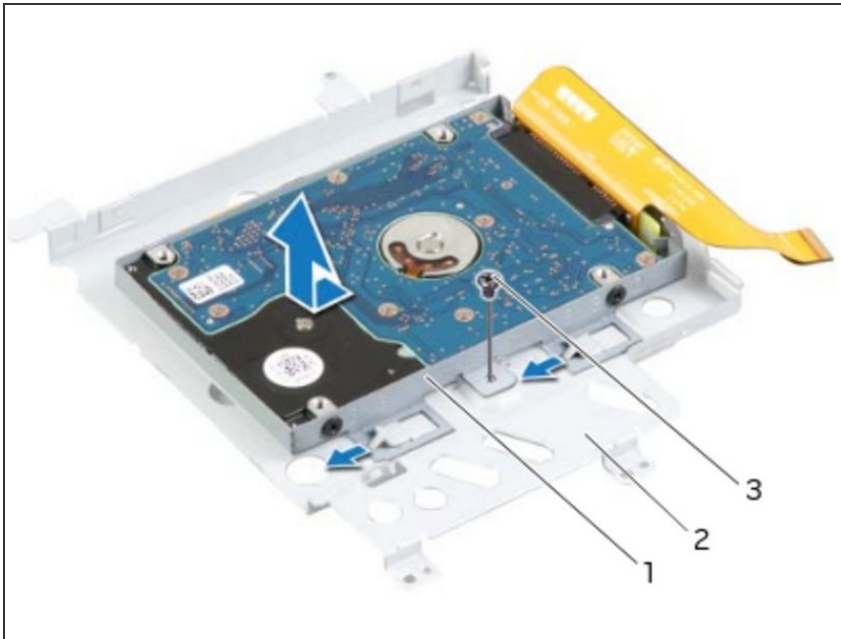
- Disconnect the interposer from the secondary hard-drive connector.

Step 25 — Connect the Interposer



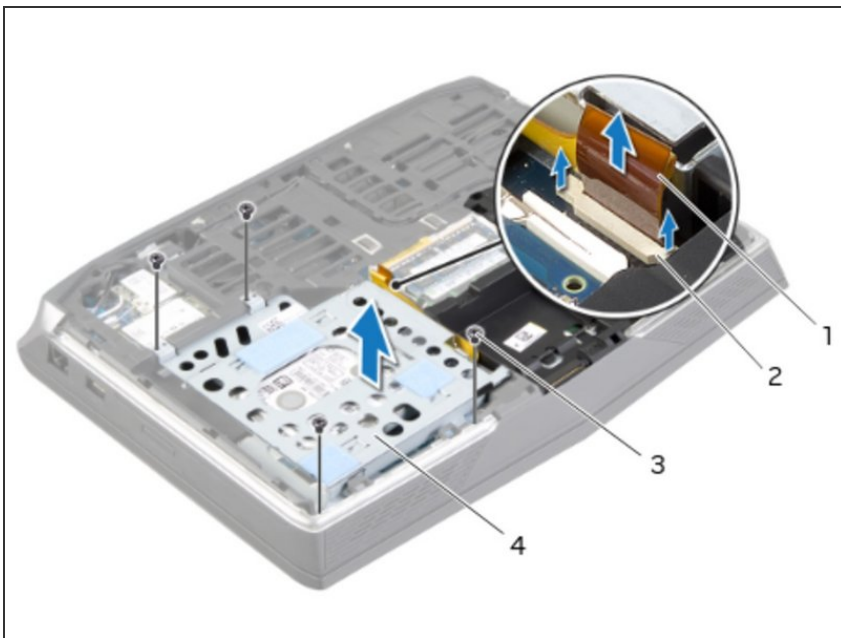
- Connect the interposer to the secondary hard-drive connector.

Step 26 — Placing the Secondary Hard-Drive



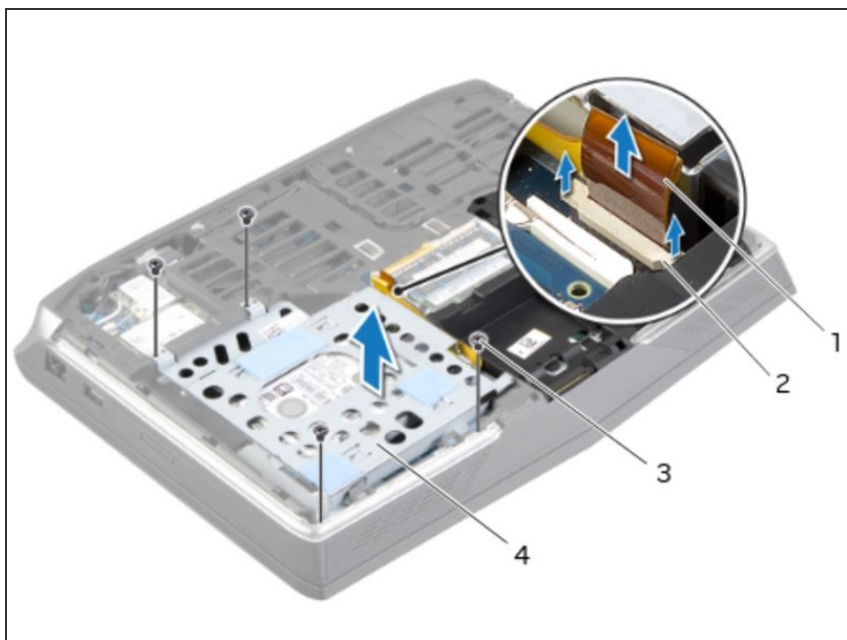
- Place the **NEW** secondary hard-drive in the secondary hard-drive bracket.

Step 27 — Align the Screw Holes



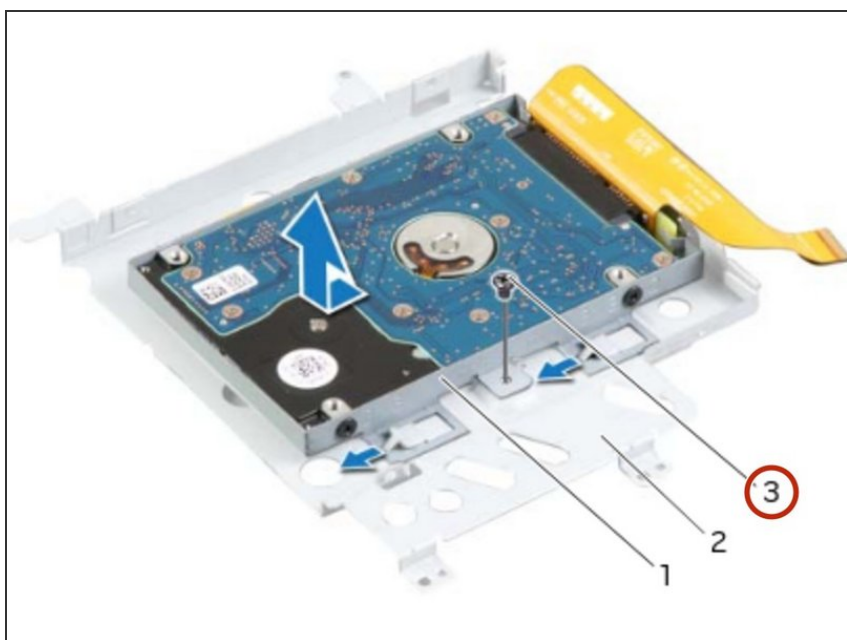
- Align the screw holes on the secondary hard-drive with the screw holes on the secondary hard-drive bracket.

Step 28 — Replace the Screws



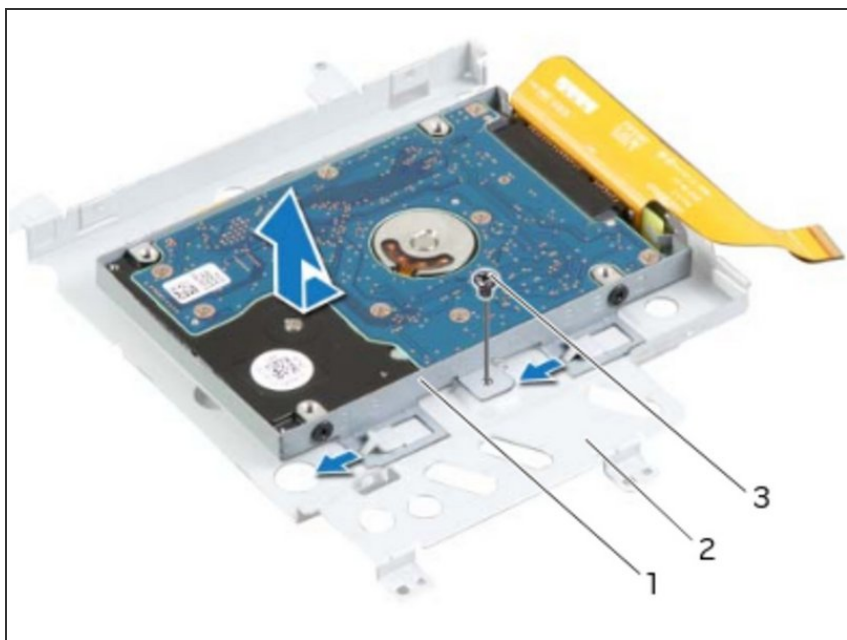
- Replace the screws that secure the secondary hard-drive to the secondary hard-drive bracket.

Step 29 — Align the Screw Hole



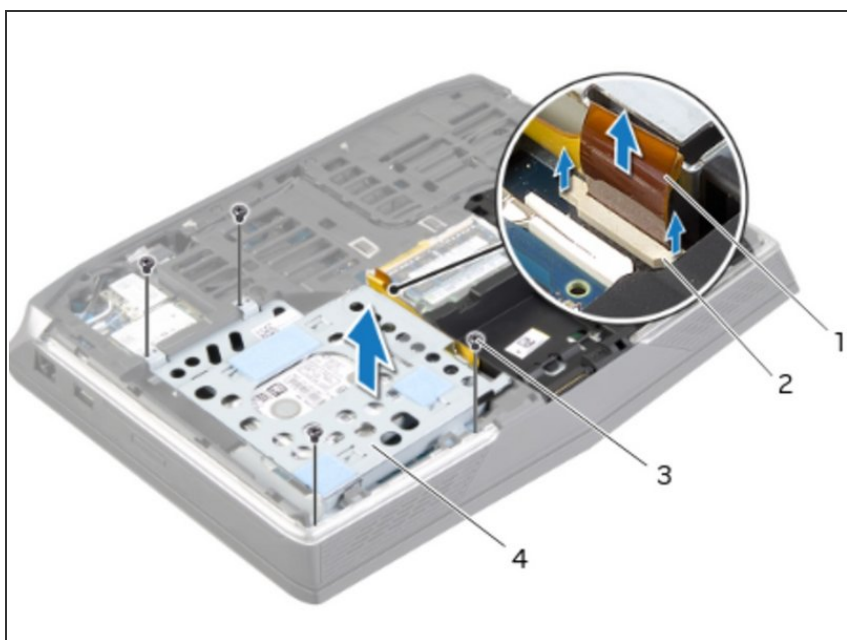
- Align the screw hole on the secondary hard-drive assembly with the screw hole on the main bracket.

Step 30 — Replace the Screw



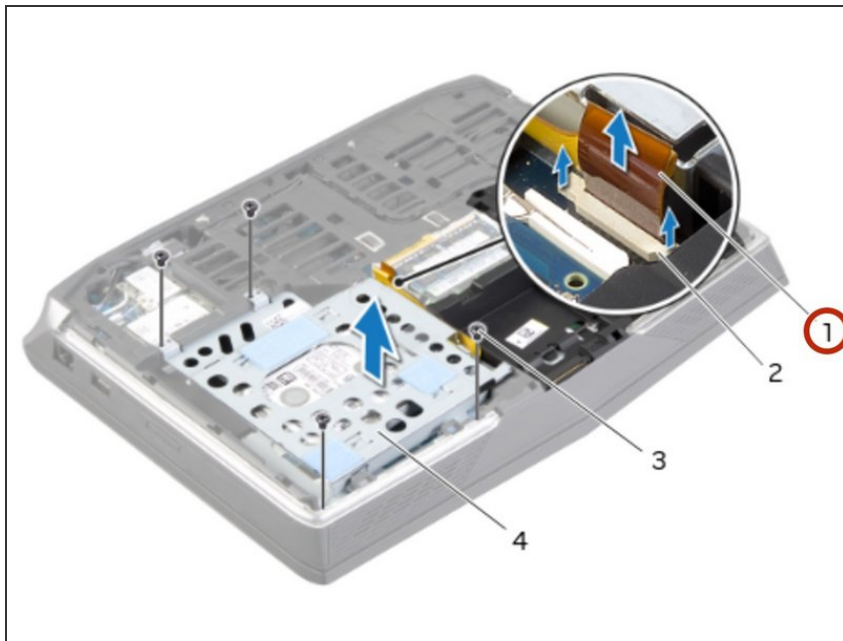
- Replace the screw that secures the secondary hard-drive assembly to the main bracket.

Step 31 — Turn the Hard-Drive Assembly Over



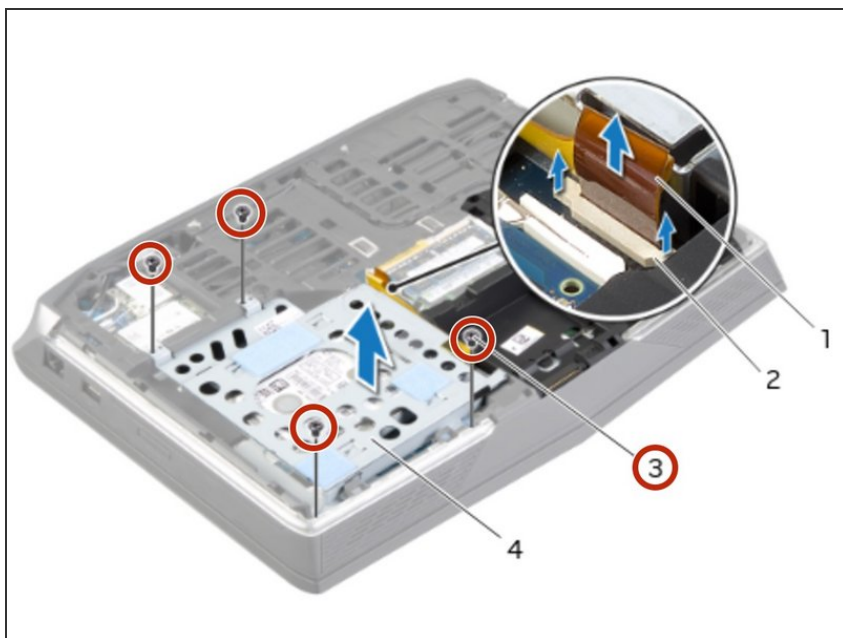
- Turn the secondary hard-drive assembly over.

Step 32 — Slide the Hard-Drive Cable



- Slide the secondary hard-drive cable into the system-board connector and press down on the connector latches to secure the cable.

Step 33 — Align the Screw Holes



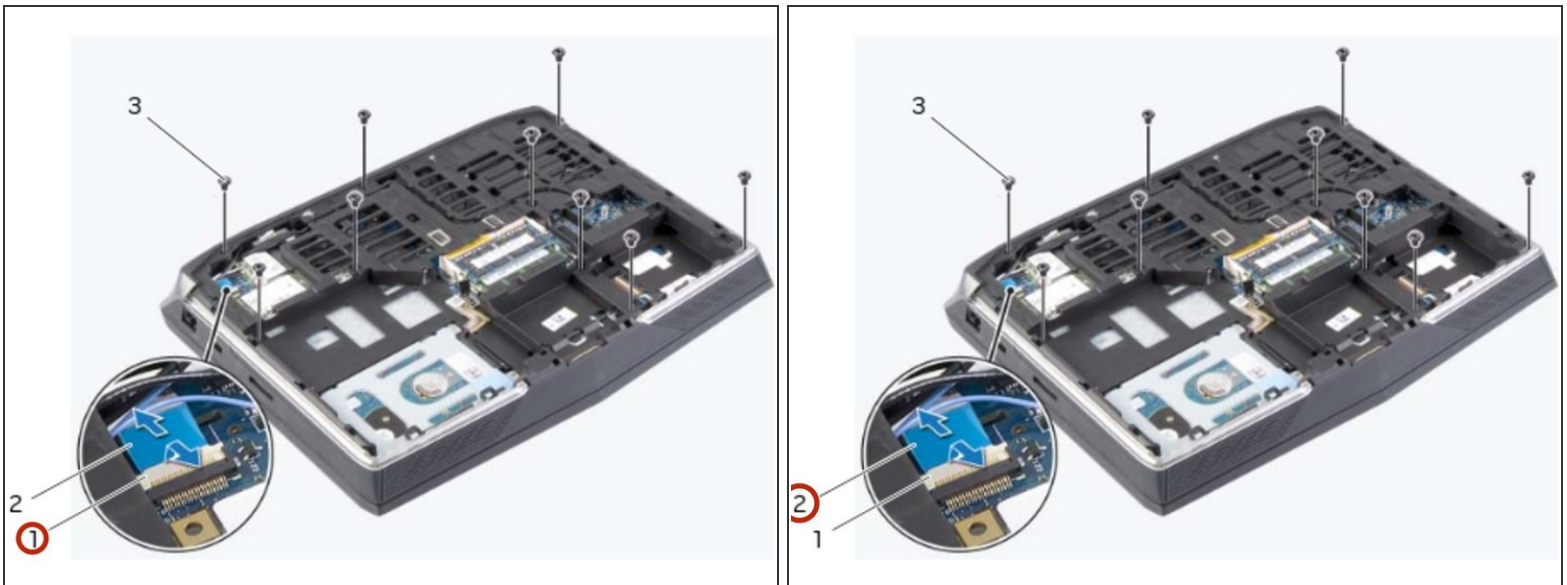
- Align the screw holes on the secondary hard-drive assembly with the screw holes on the computer base.

Step 34 — Replace the Screws



- Replace the screws that secure the secondary hard-drive assembly to the computer base.

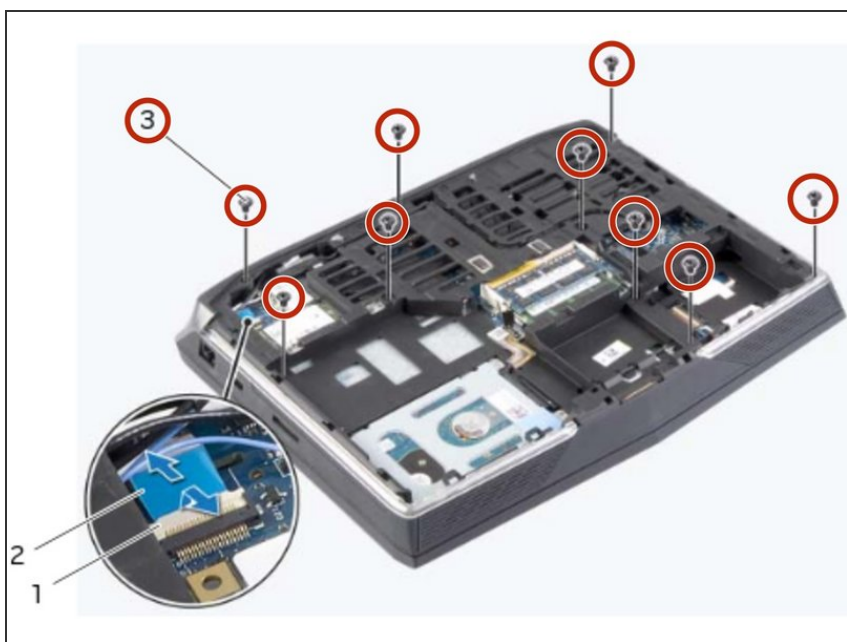
Step 35 — Disconnecting the Status-Light Board Cable



⚠ WARNING: Before working inside your computer, read the safety information that shipped with your computer and follow the steps in [Before Working Inside Your Computer](#). After working inside your computer, follow the instructions in [After Working Inside Your Computer](#).

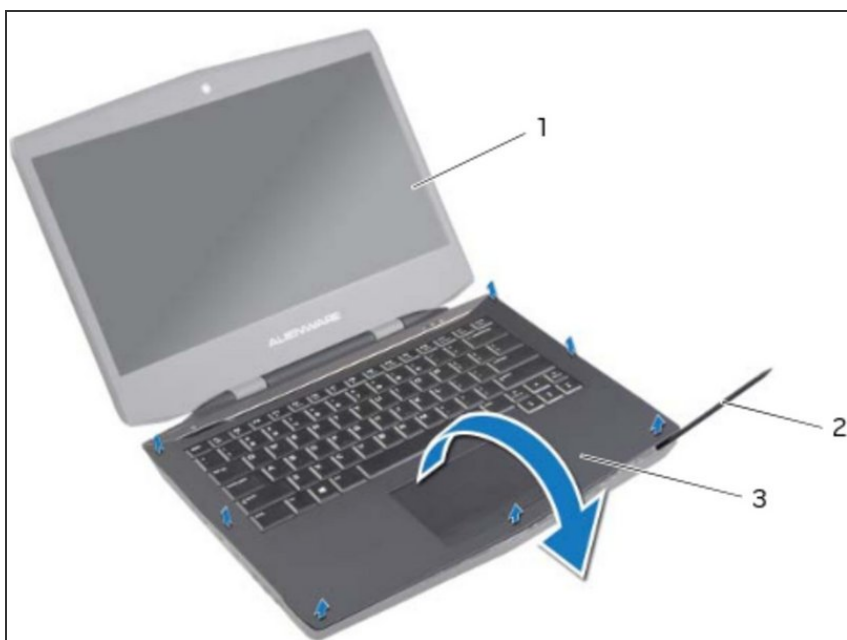
- Lift the connector latch and pull the pull-tab to disconnect the status-light board cable from the system-board connector and slide the cable into the slot on the computer base.

Step 36 — Remove the Screws



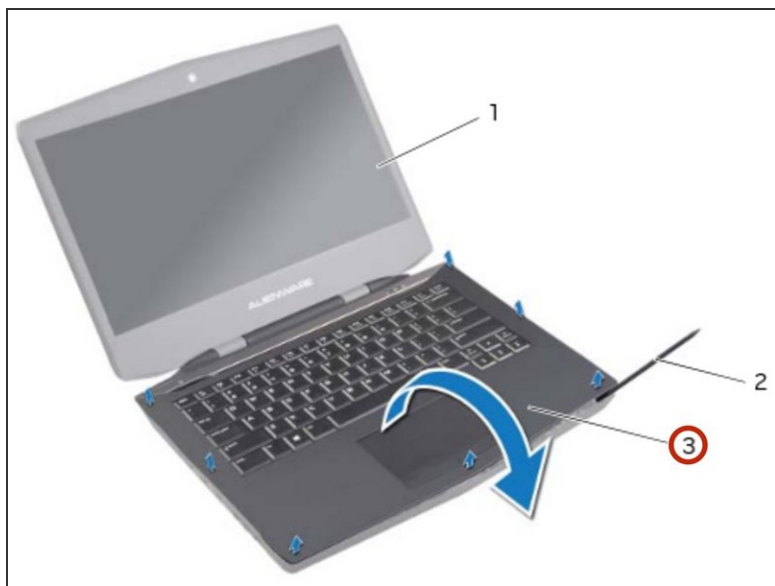
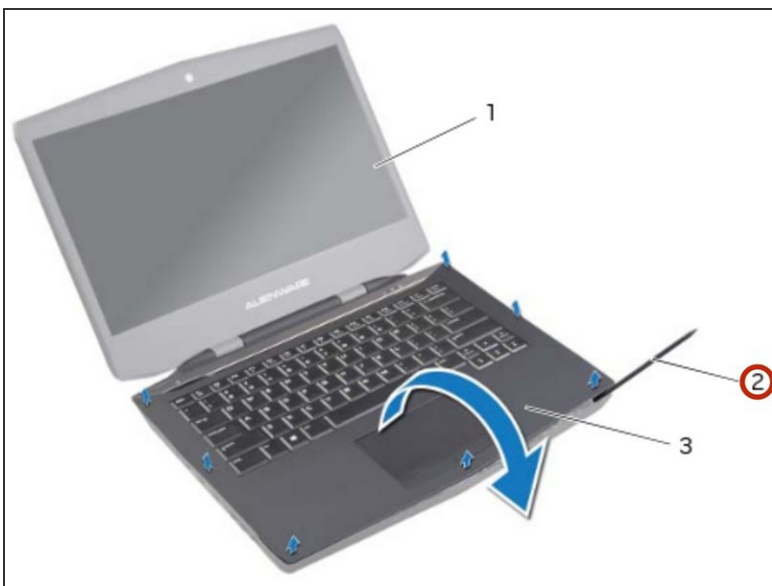
- Remove the screws that secure the palm -rest assembly to the computer base.

Step 37 — Turn the Computer Over



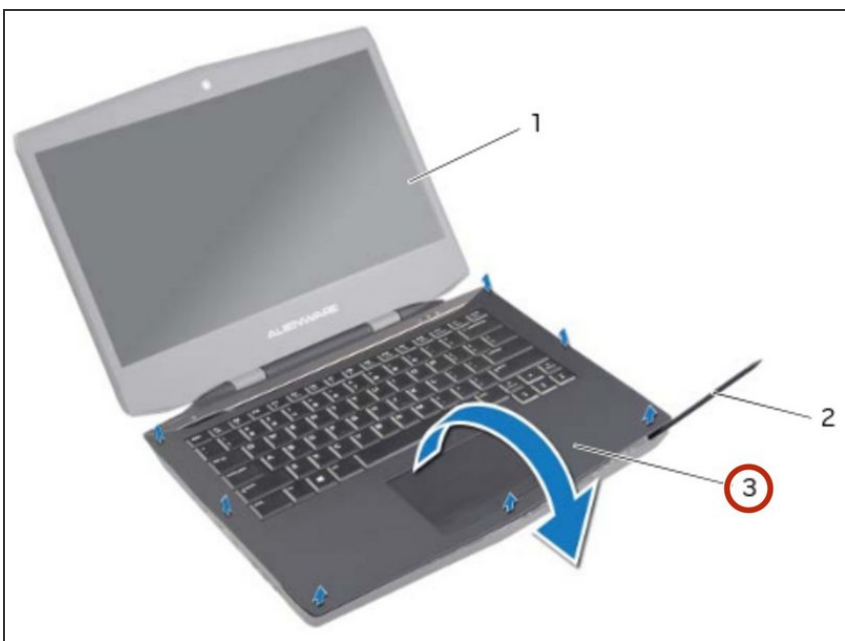
- Turn the computer over and open the display as far as possible.

Step 38 — Pry the Palm-Rest Assembly



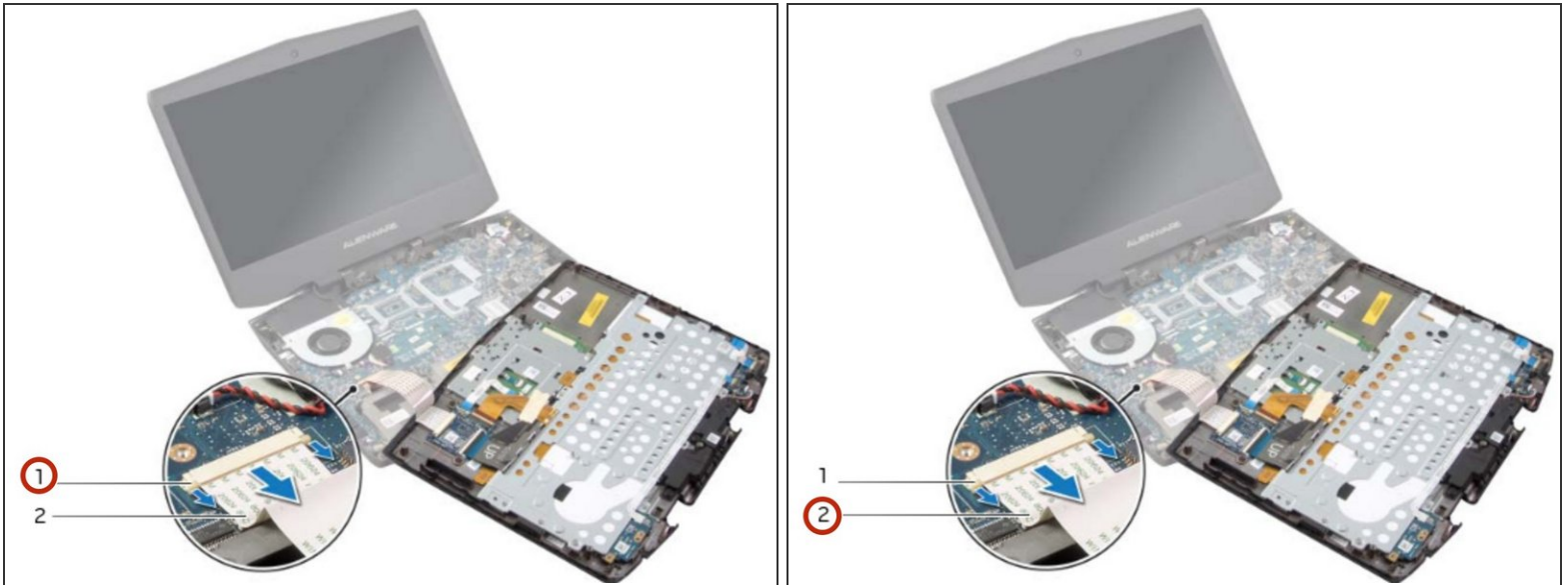
- Using a plastic scribe, pry the palm-rest assembly from the computer base.

Step 39 — Lift the Palm-Rest Assembly



- Carefully lift the palm-rest assembly and turn it over.

Step 40 — Release the Connector Latches



- Release the connector latches to disconnect the flexi-cable from the system board.

Step 41 — Follow the Instructions



- Follow the instructions from step 1 to step 9 in [Removing the Keyboard](#).
- Follow the instructions from step 1 to step 4 in [Removing the Status-Light Board](#).
- Follow the instructions from step 1 to step 4 in [Removing the Speakers](#).
- Follow the instructions from step 1 to step 4 in [Removing the Power-Button Board](#).

Step 42 — Follow Instructions



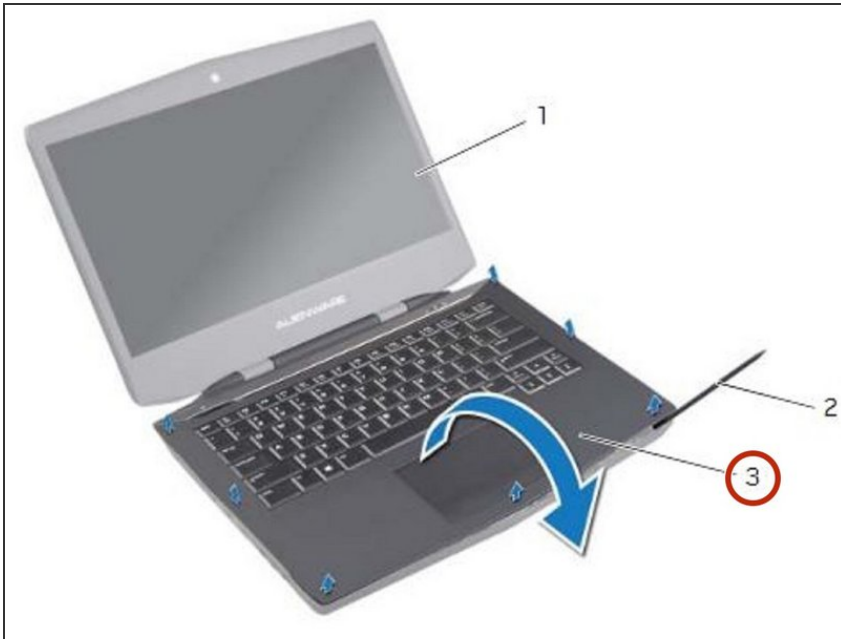
- Follow the instructions from step 1 to step 4 in [Replacing the Power-Button Board](#).
- Follow the instructions from step 1 to step 3 in [Replacing the Speakers](#).
- Follow the instructions from step 1 to step 4 in [Removing the Status-Light Board](#).
- Follow the instructions from step 1 to step 8 in [Replacing the Keyboard](#).

Step 43 — Connect the Flexi-Cable



- Connect the flexi-cable to the connector on the system board.

Step 44 — Turn the Palm-Rest Assembly



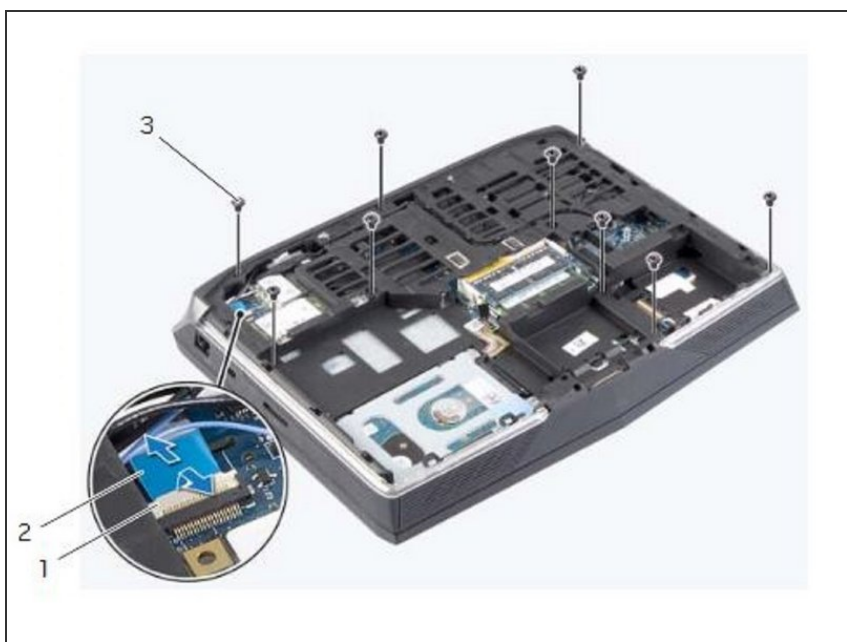
- Turn the **NEW** palm-rest assembly over and slide the status-light board cable through the slot on the computer base.

Step 45 — Align the Palm-Rest Assembly



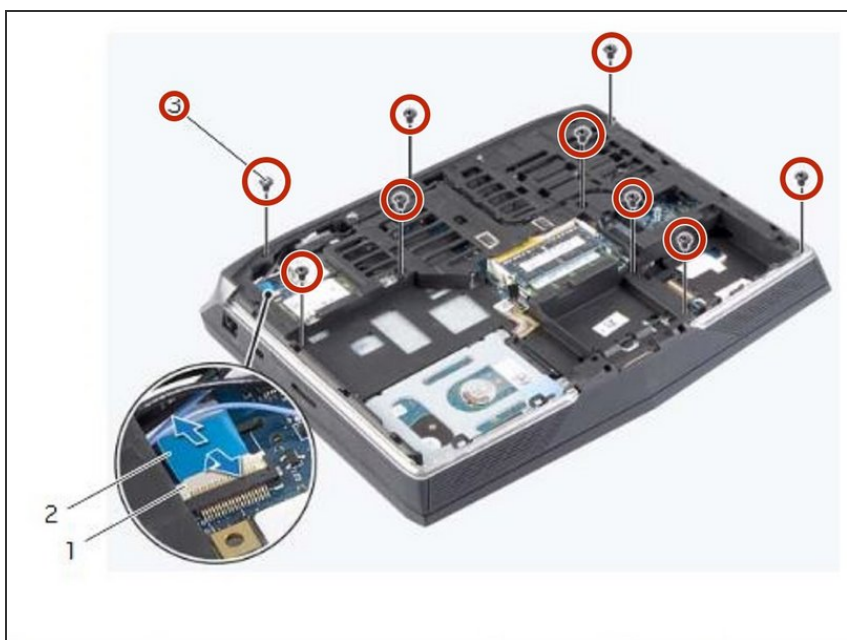
- Align the palm-rest assembly over the computer base and snap the palm-rest assembly into place.

Step 46 — Close the Display



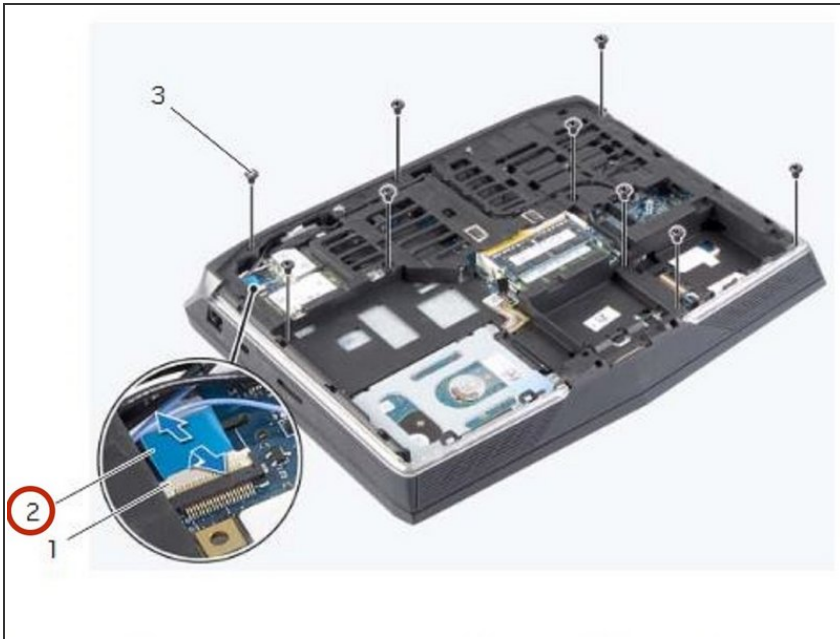
- Close the display and turn the computer over.

Step 47 — Replace the Screws



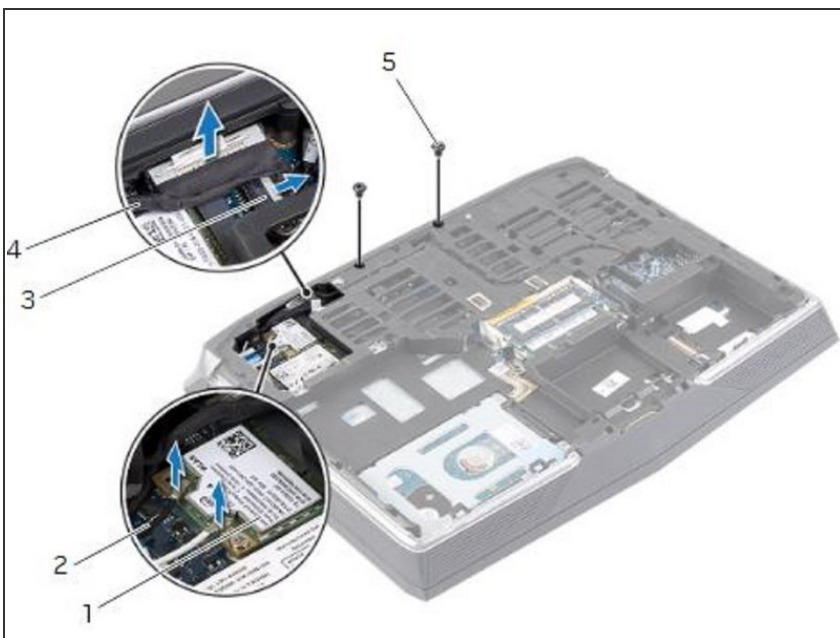
- Replace the screws that secure the palm-rest assembly to the computer base.

Step 48 — Slide the Status-Light Board Cable



- Slide the status-light board cable into the system-board connector and press on the connector latch to secure the cable.

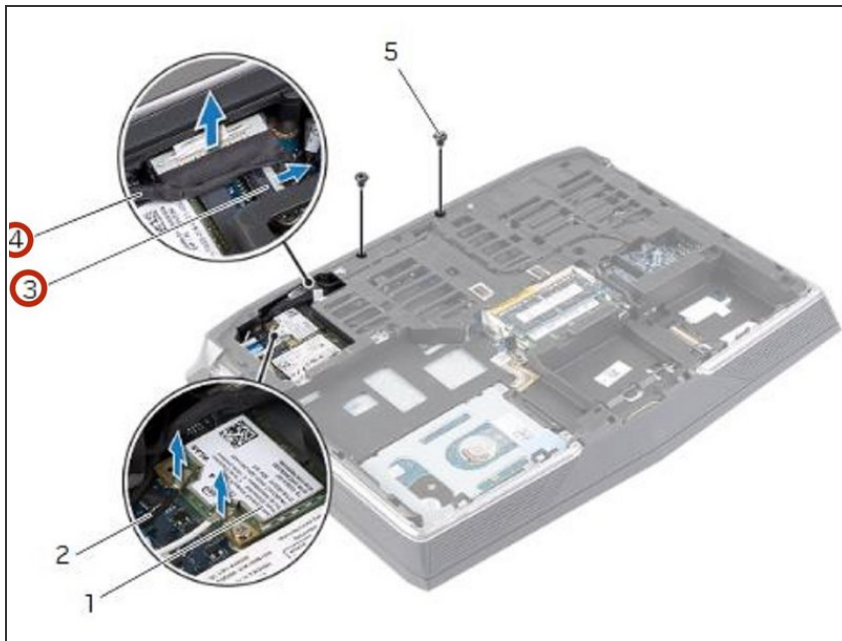
Step 49 — Close the Display



- ⚠ **WARNING:** Before working inside your computer, read the safety information that shipped with your computer and follow the steps in [Before Working Inside Your Computer](#). After working inside your computer, follow the instructions in [After Working Inside Your Computer](#).

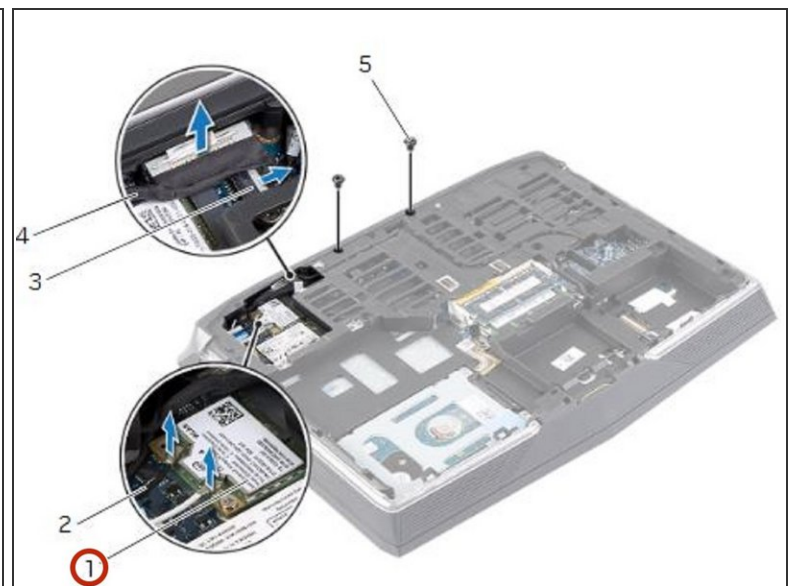
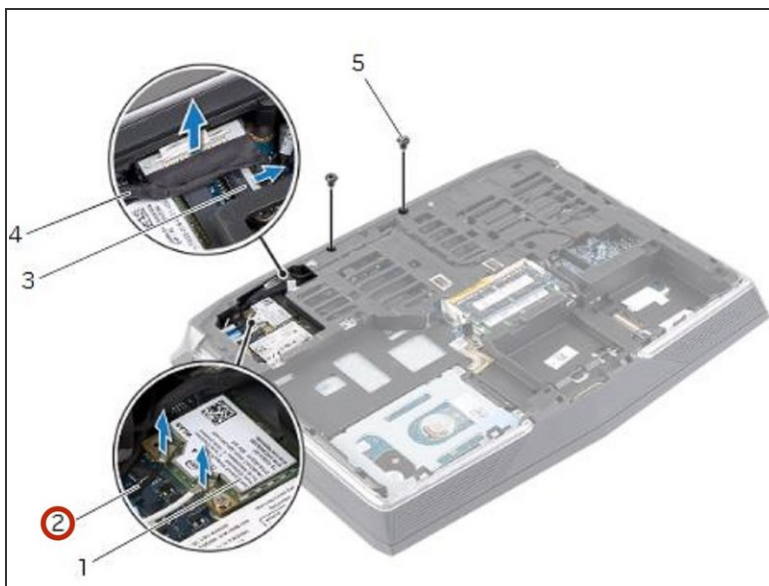
- Close the display and turn the computer over.

Step 50 — Disconnecting the Display



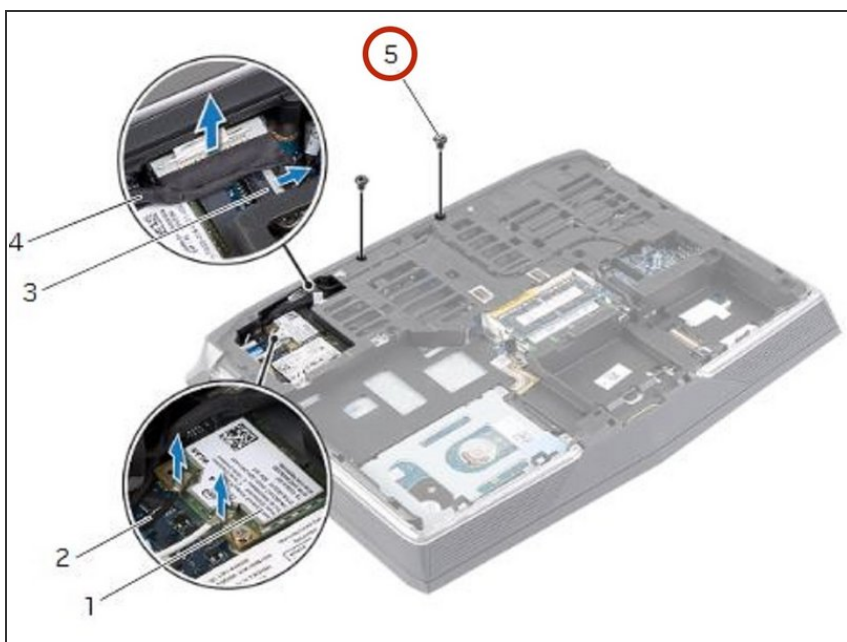
- Disconnect the display and camera cables from the system-board connectors.

Step 51 — Disconnect the Antenna Cables



- Disconnect the antenna cables from the wireless mini-card.

Step 52 — Remove the Screws



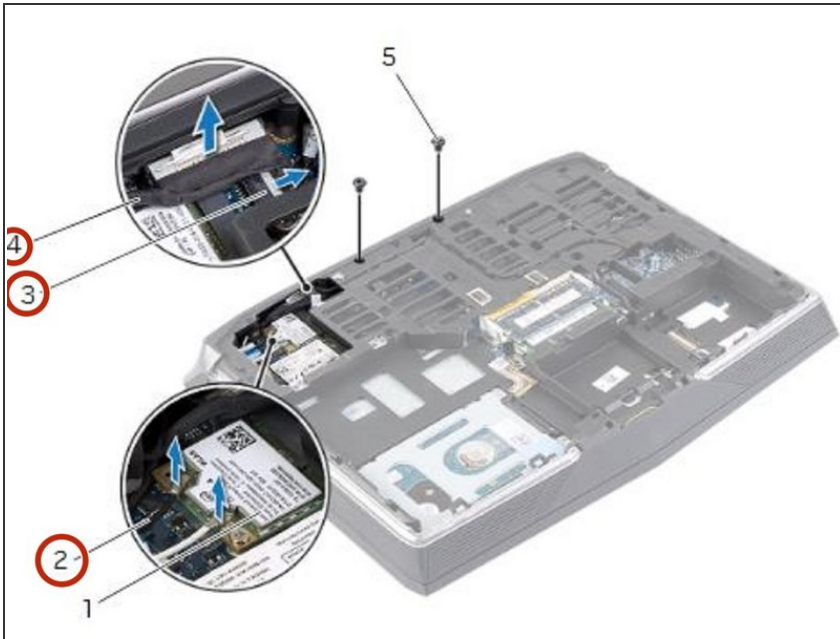
- Remove the screws that secure the display assembly to the computer base.

Step 53 — Turn the Computer Over



- Turn the computer over and open the display as far as possible.

Step 54 — Remove the Cables



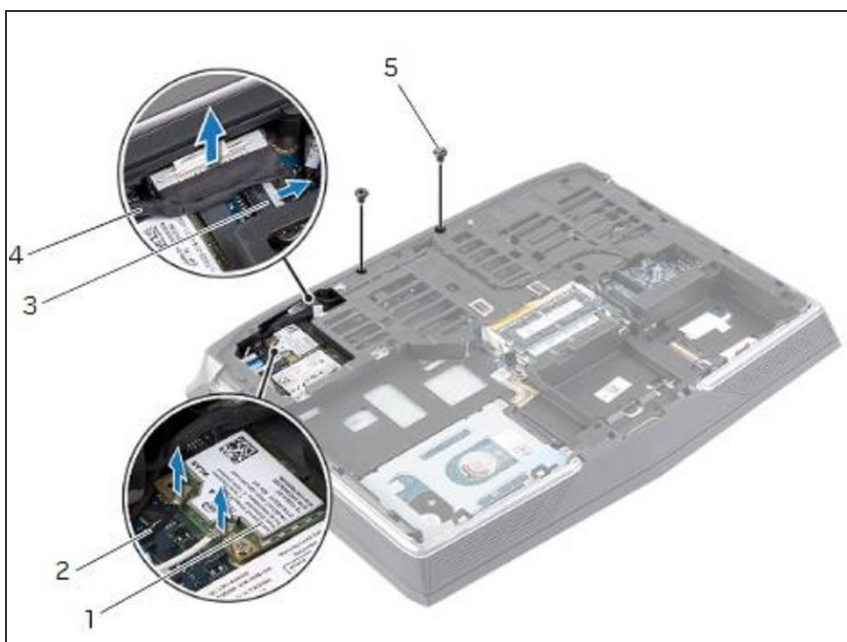
- Remove the display, camera, and antenna cables from the slots on the computer base.

Step 55 — Note the Cable-Routing



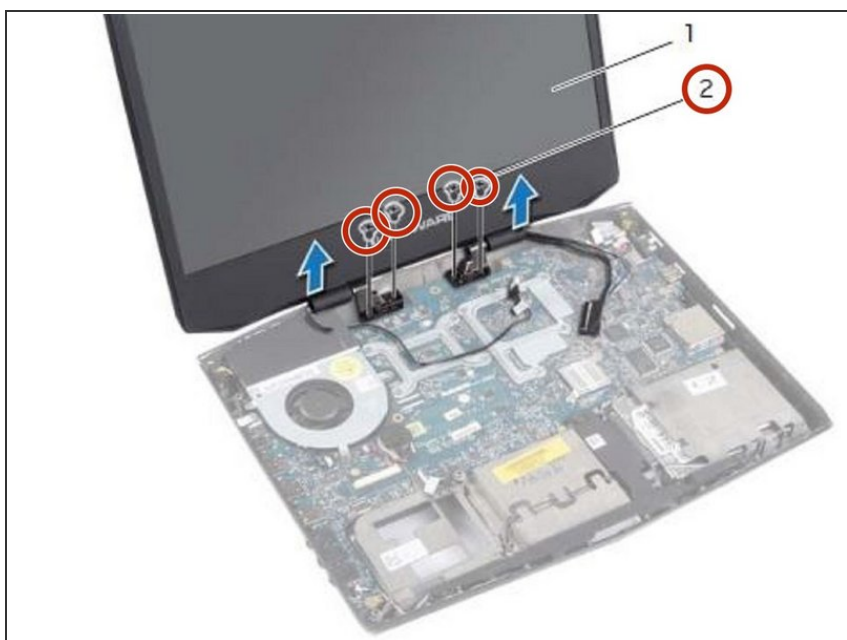
- Note the display, camera and antenna cable-routing and remove the cables from their routing guides.

Step 56 — Slide the Cables



- Slide the cables through the slots on the computer base.

Step 57 — Remove the Screws



- Remove the screws that secure the display assembly to the computer base.

Step 58 — Lifting the Display Assembly



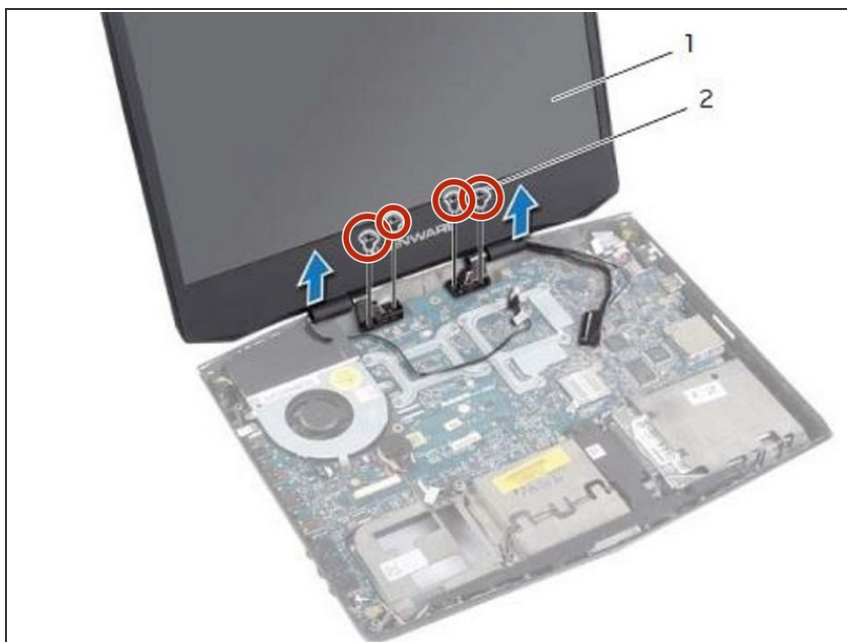
- Lift the display assembly off the computer base.

Step 59 — Align the Screw Holes



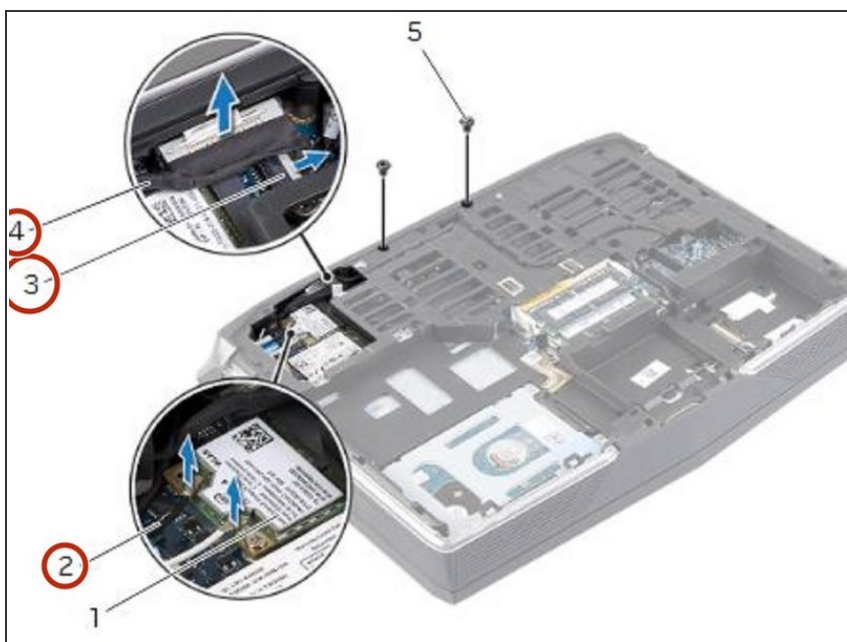
- Align the screw holes on the **NEW** display assembly with the screw holes on the computer base.

Step 60 — Replace the Screws



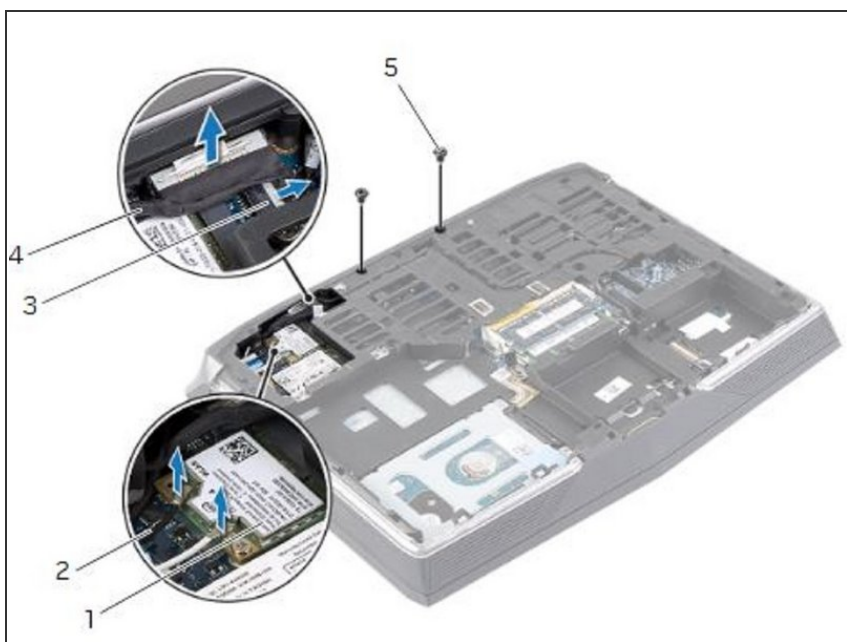
- Replace the screws that secure the display assembly to the computer base.

Step 61 — Slide the Cables



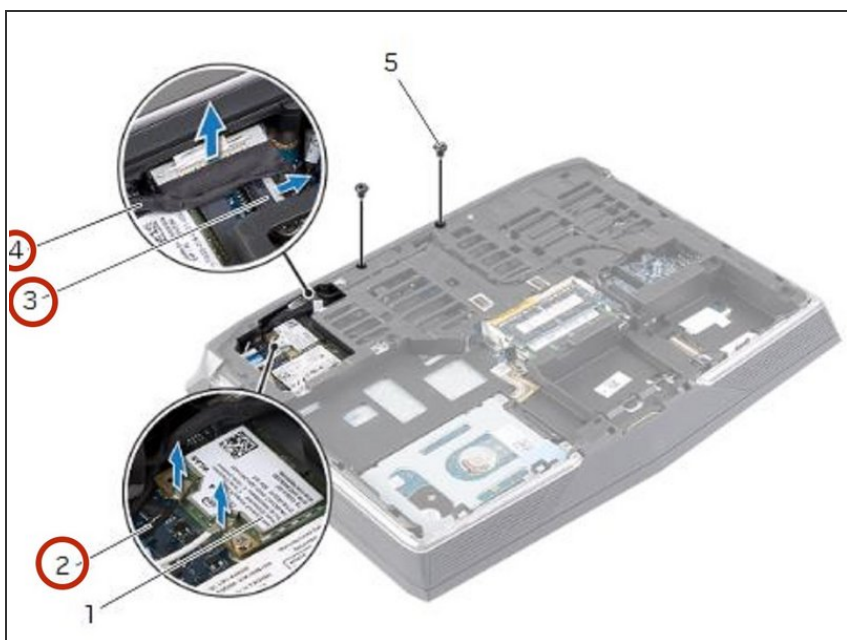
- Slide the cables through the slots on the computer base.

Step 62 — Close the Display



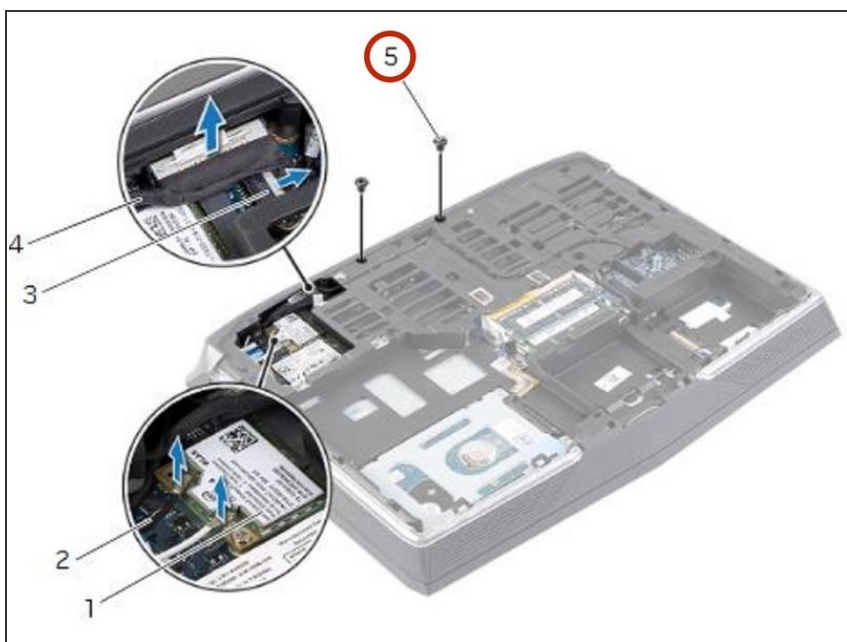
- Close the display and turn the computer over.

Step 63 — Route the Cables



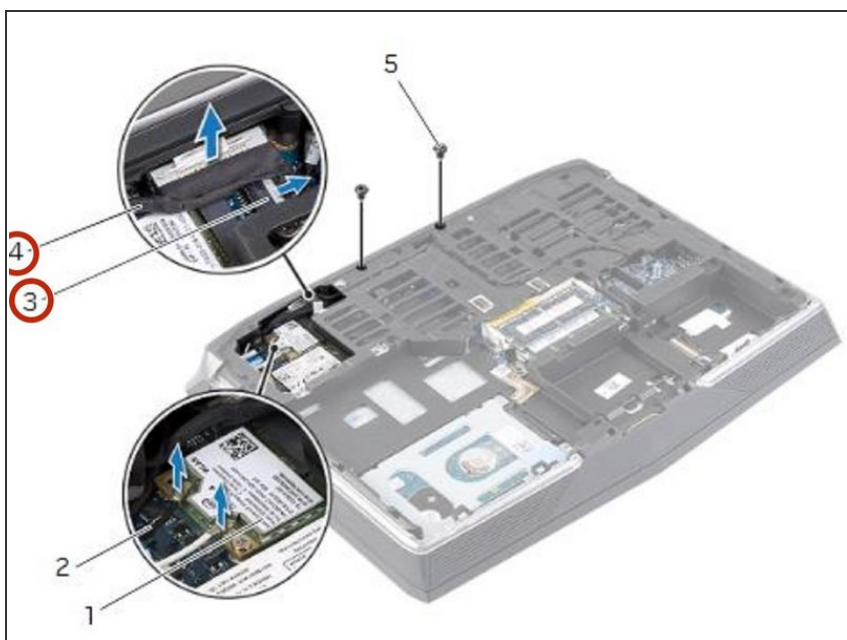
- Route the display, camera, and antenna cables through the routing guides.

Step 64 — Replace the Screws



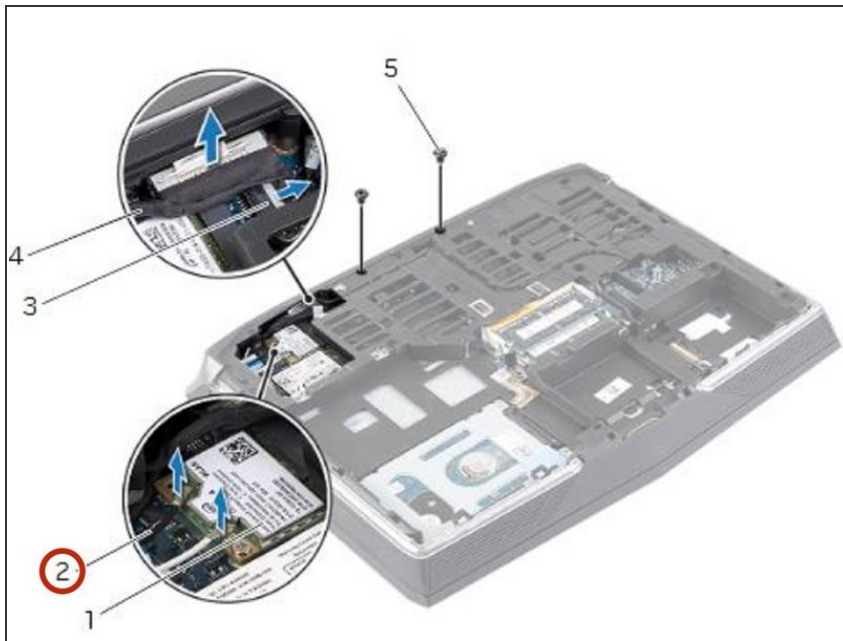
- Replace the screws that secure the display assembly to the computer base.

Step 65 — Connecting the Cables



- Connect the display and camera cables to the system-board connectors.

Step 66 — Connecting the Antenna Cables



- Connect the antenna cables to the wireless mini-card.

Step 67 — Prying the Edge of the Display Bezel



- ⚠ **WARNING:** Before working inside your computer, read the safety information that shipped with your computer and follow the steps in [Before Working Inside Your Computer](#). After working inside your computer, follow the instructions in [After Working Inside Your Computer](#).

- Using your fingertips, carefully pry up the inside edge of the display bezel

Step 68 — Remove the Display Bezel



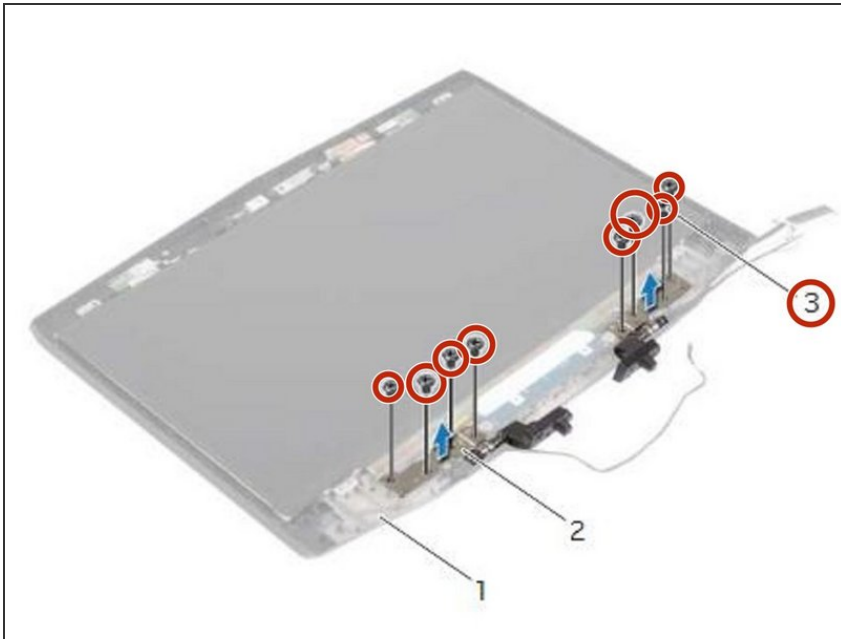
- Remove the display bezel off the display back-cover.

Step 69 — Aligning the Display Bezel



- Align the **NEW** display bezel with the display back-cover, and gently snap the display bezel into place.

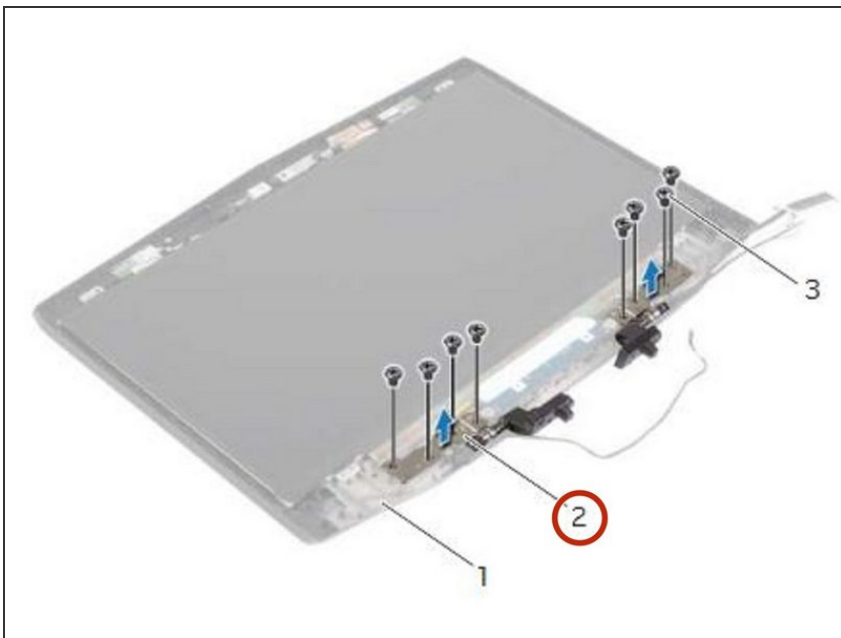
Step 70 — Remove the Screws



⚠ WARNING: Before working inside your computer, read the safety information that shipped with your computer and follow the steps in [Before Working Inside Your Computer](#). After working inside your computer, follow the instructions in [After Working Inside Your Computer](#).

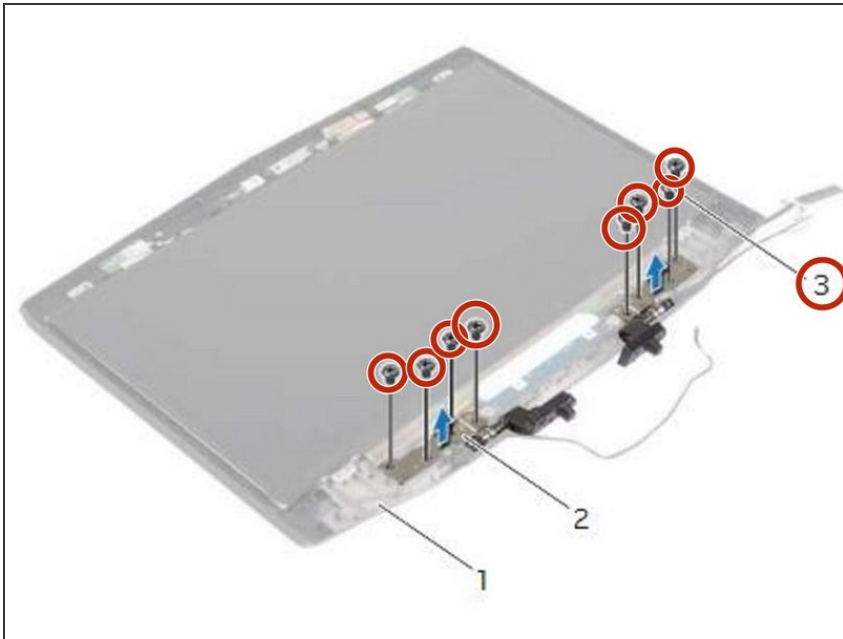
- Remove the screws that secure the display hinges to the display back-cover.

Step 71 — Remove the Display Hinges



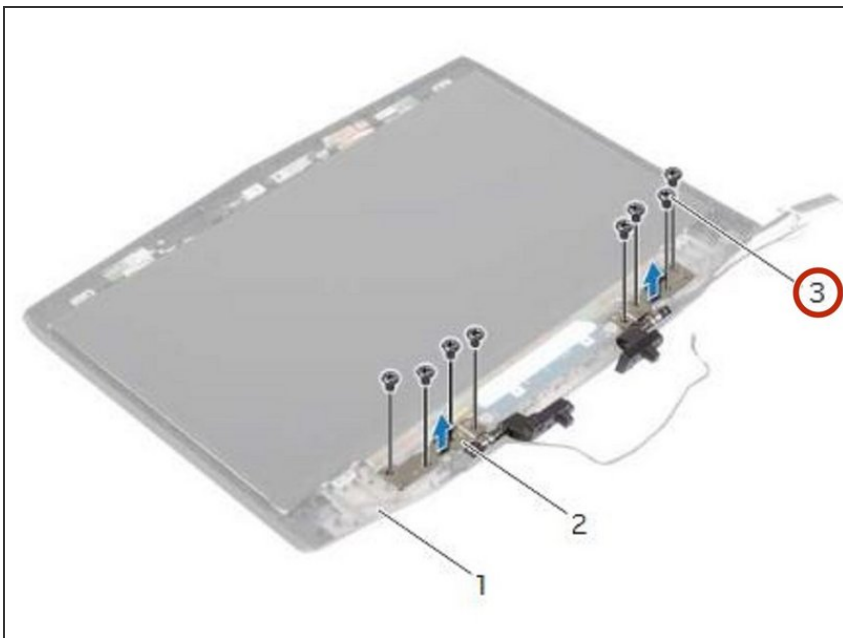
- Remove the display hinges off the display back-cover.

Step 72 — Align the Screw Holes



- Align the screw holes on the **NEW** display hinges with the screw holes on the display back-cover.

Step 73 — Replace the Screws



- Replace the screws that secure the display hinges to the display back-cover.

To reassemble your device, follow these instructions in reverse order.