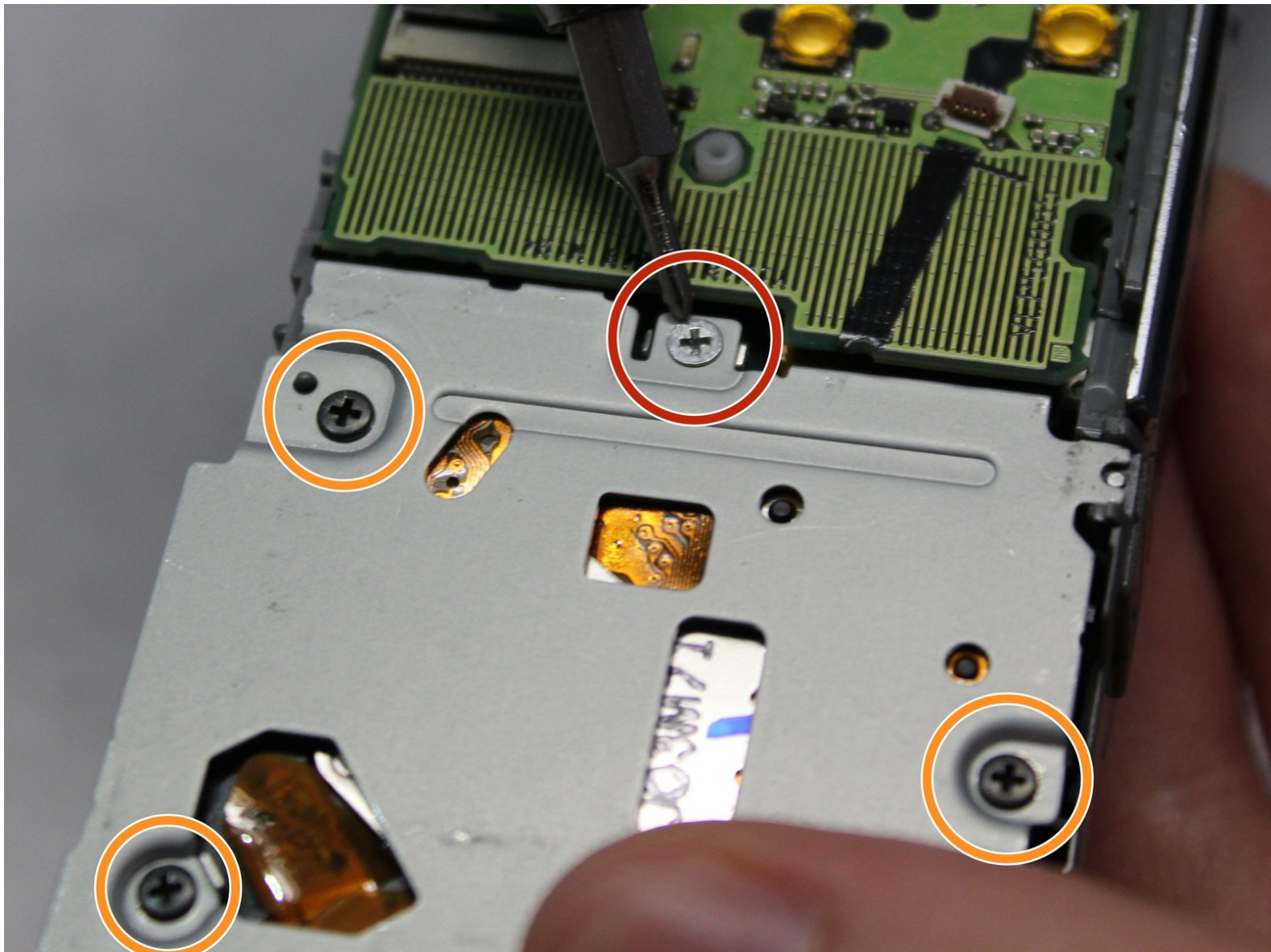




Panasonic Lumix DMC-FX37 Lens Casing Replacement

A guide showing the Replacement of the lens casing on a Panasonic Lumix DMC-FX37.

Written By: Ben DuBose



INTRODUCTION

This guide will show you how to almost completely strip down your device. Because of this, it may take a fair bit of time if you have never done a disassembly before. If you are looking for a guide to access the lenses themselves, this guide will not show that. However, it is possible if you have the patience to disassemble the lens casing.



TOOLS:

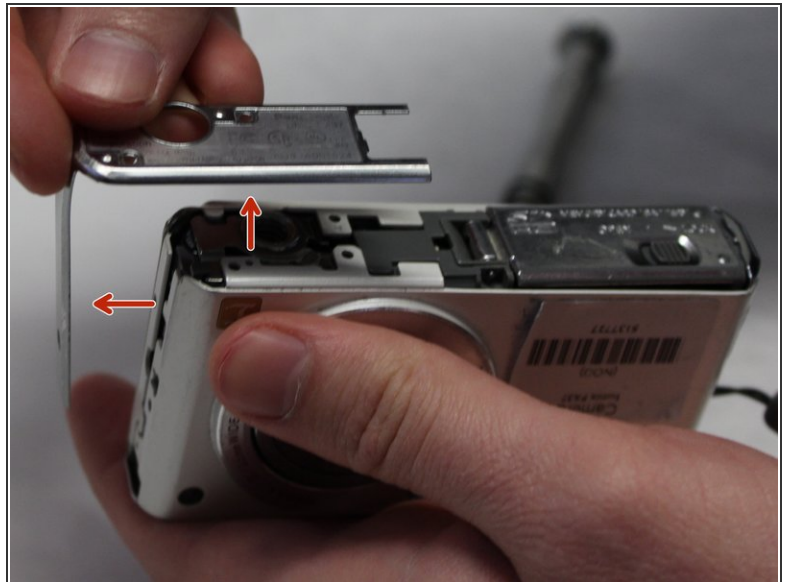
- [Phillips #000 Screwdriver](#) (1)
 - [Spudger](#) (1)
-

Step 1 — Panasonic Lumix DMC-FX37 Disassembly



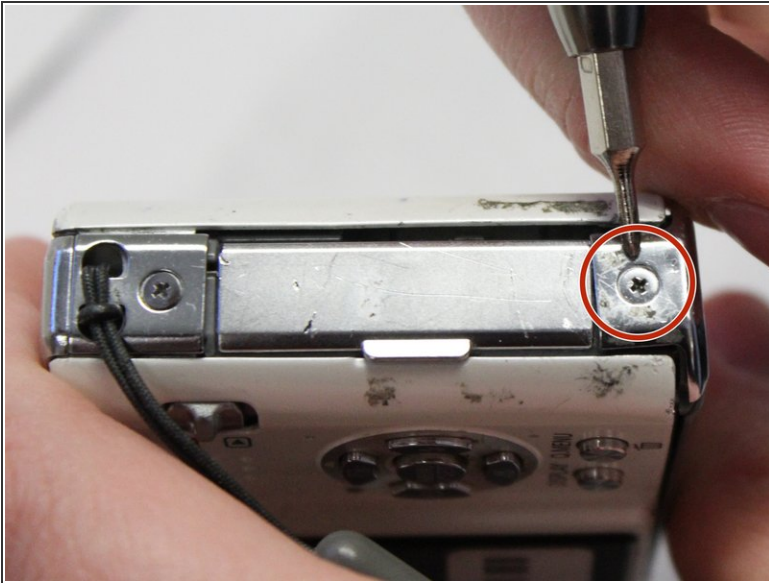
- Remove both of the 3 mm screws on the bottom of the camera connected to the side panel.

Step 2



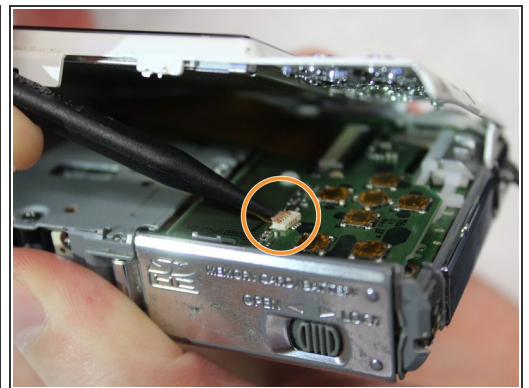
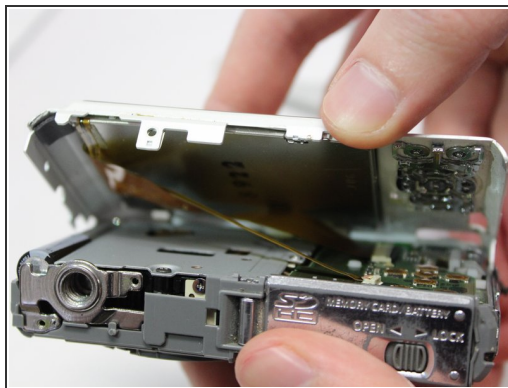
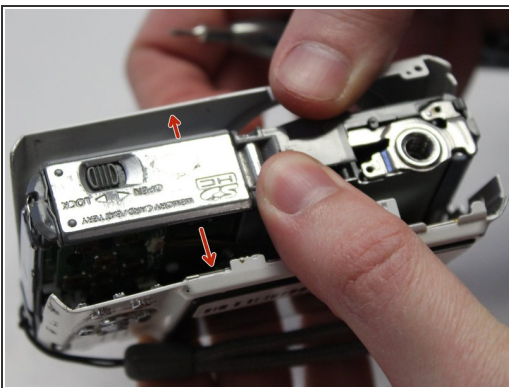
- Remove the remaining 3 mm screw holding on the side panel and remove the panel entirely.

Step 3



- On the opposite side of the camera, remove the two 3 mm screws.
- Remove the bottom side panel and place it with its respective 3 mm screw.

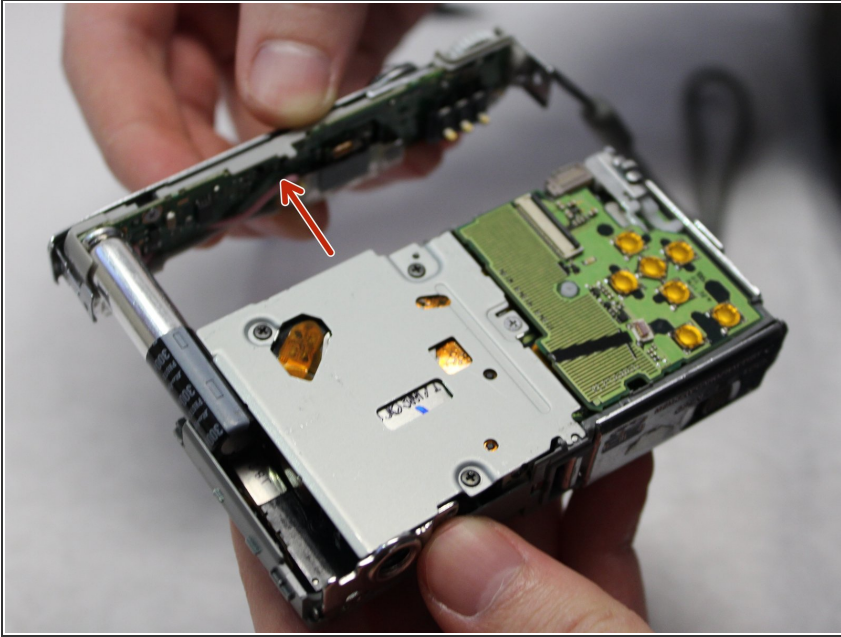
Step 4



- Remove the front panel (the panel around the lens casing) from the camera.
- Remove the two ribbon cables connected to the back panel (the panel this the LCD screen) by lifting up on their respective tabs and gently pulling out the cord.
- ⚠ Caution: When removing the back panel, the two ribbon cables are relatively delicate and must both be disconnected before the panel can be entirely removed.
- Remove the back panel from the camera.

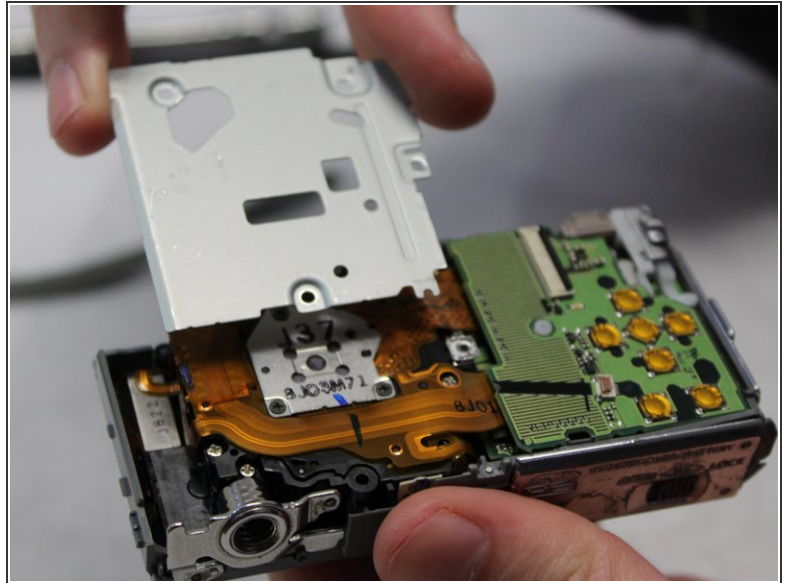
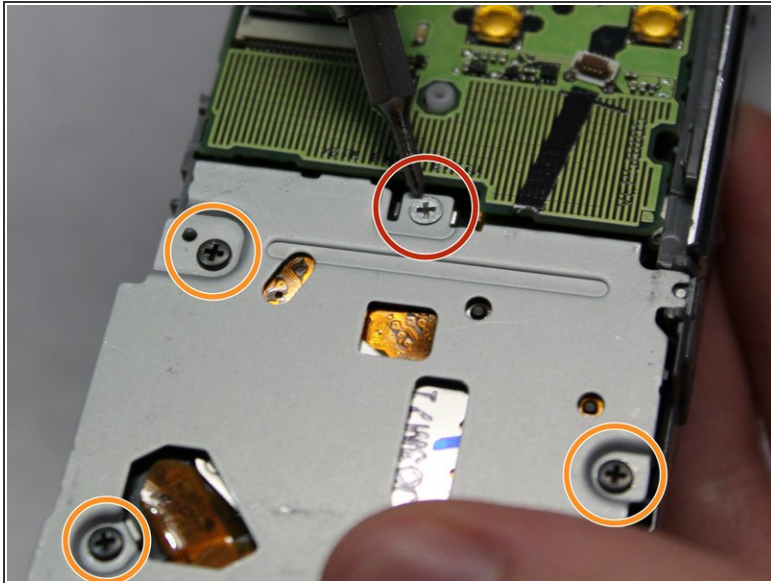
This document was generated on 2020-11-28 06:30:16 AM (MST).

Step 5



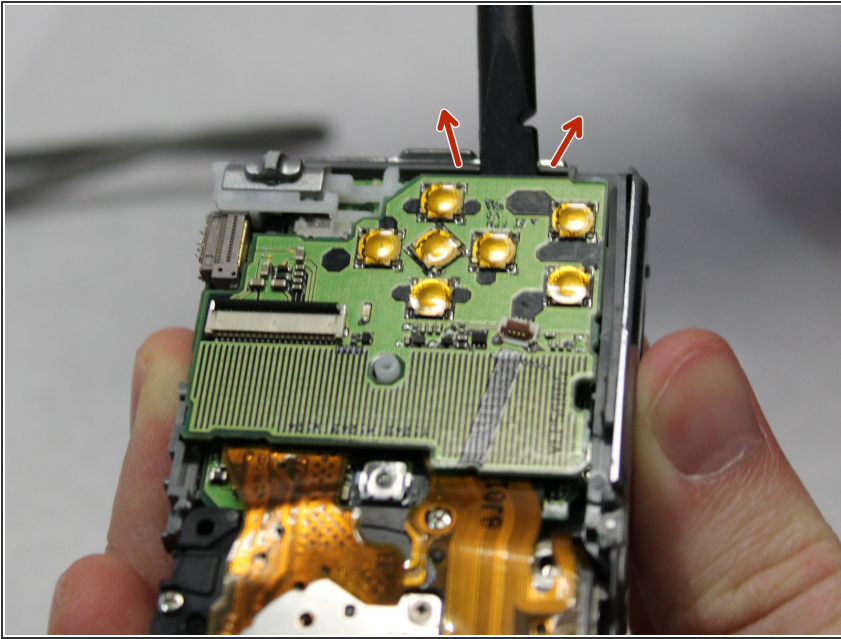
- Remove the top control panel (connected to the flash battery) from the camera.
- ⚠ The top control panel is connected to the rest of the camera by a delicate multi-pin plug. Be careful as to not bend the pins!

Step 6 — Lens Casing



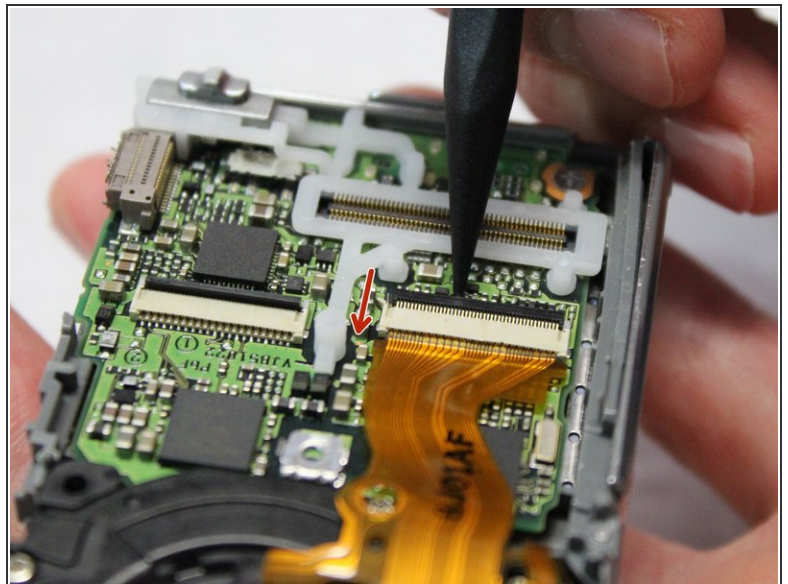
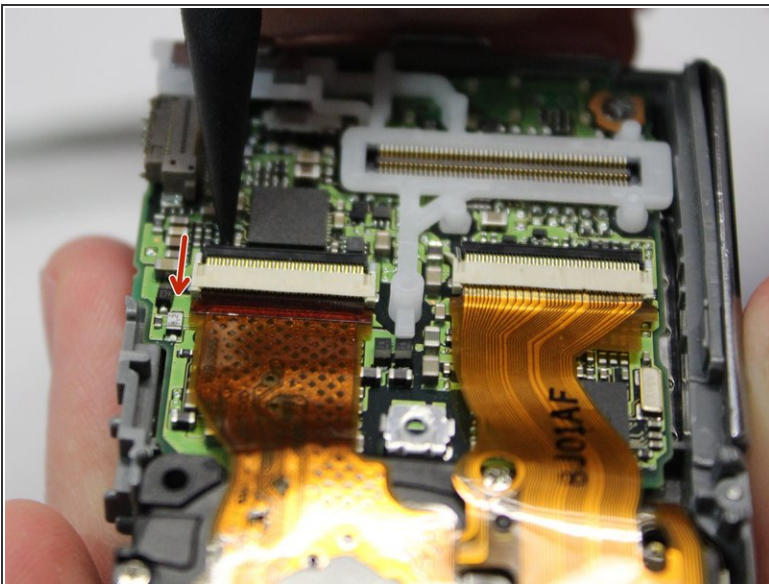
- Unscrew the silver 2mm screw from the protection panel.
- Unscrew the three black 8mm screws from the protection panel.
- ⚠ Be sure to remember where these screws go, inserting a longer screw in a short slot can damage your device!
- Remove the protection panel entirely.

Step 7



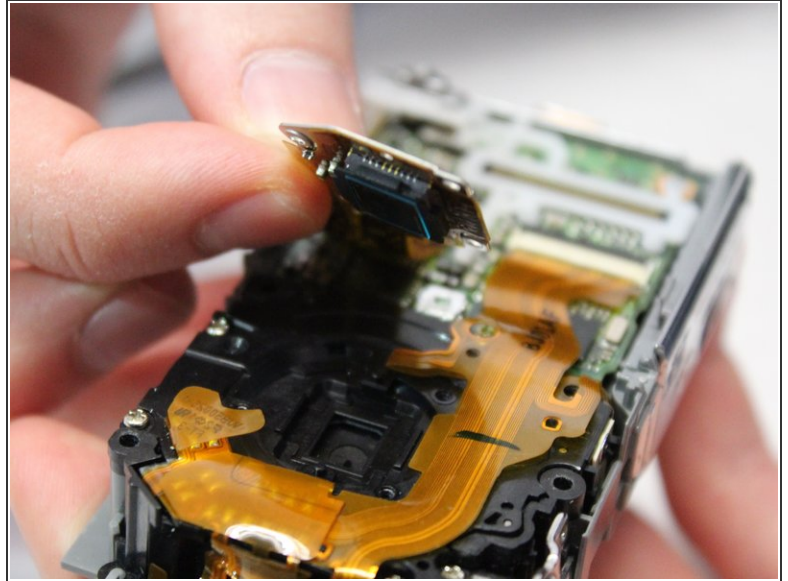
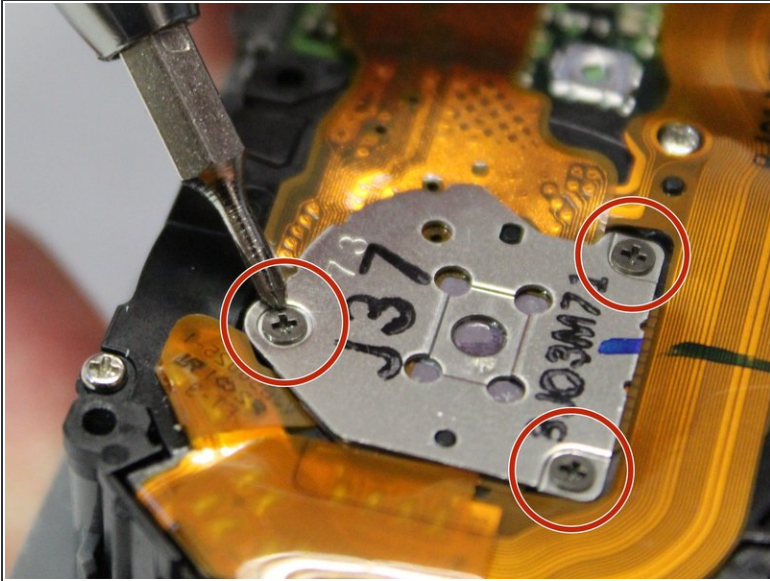
- Insert the flat end of a spudger underneath the motherboard and twist. This will disconnect it from the rest of the device.

Step 8



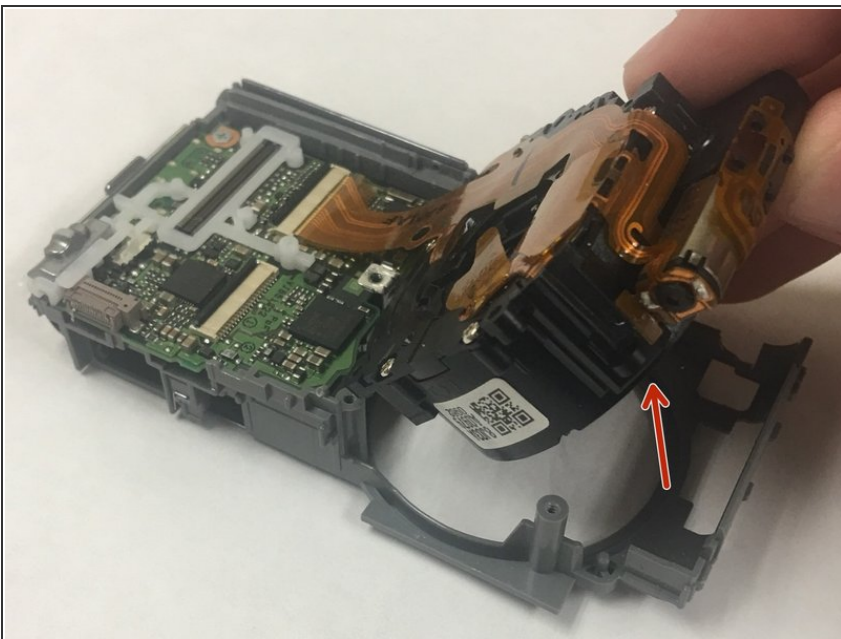
- Using the pointed end of a spudger, flip up the two black tabs holding the ribbon cables in place.

Step 9



- Unscrew the three 3mm screws holding the photoreceptor in place.
- Lift the photoreceptor and gently pull it to release the now disconnected ribbon cable.

Step 10



- Gently lift and remove the lens casing, pulling it free from the now disconnected ribbon cable.

To reassemble your device, follow these instructions in reverse order.