



Intempo Wireless Speaker Complete Disassembly

Accidental damages during teardown might unnecessarily cause the entire Speaker to be discarded. Use our guide for safer disassembly.

Written By: Jia'en Ngieng



INTRODUCTION

Intempo Wireless Speaker is a battery-powered inductive speaker that amplifies audio simply by placing the smartphone on top of it, without the need for WiFi, Bluetooth or any form of wired connection. However, the speaker tends to work intermittently with age as it slowly loses its functionality. Hence, we will be documenting the process of disassembling the “Intempo Wireless Speaker.” The circuit board is a crucial component that keeps the Wireless Speaker functional, and we believe a lot of users will find it beneficial if they are able to disassemble the product to access the circuit board without damaging any parts of the speaker, given the help of our teardown experience.



TOOLS:

- [Spudger](#) (1)
- [Phillips #0 Screwdriver](#) (1)
- [Phillips #1 Screwdriver](#) (1)



PARTS:

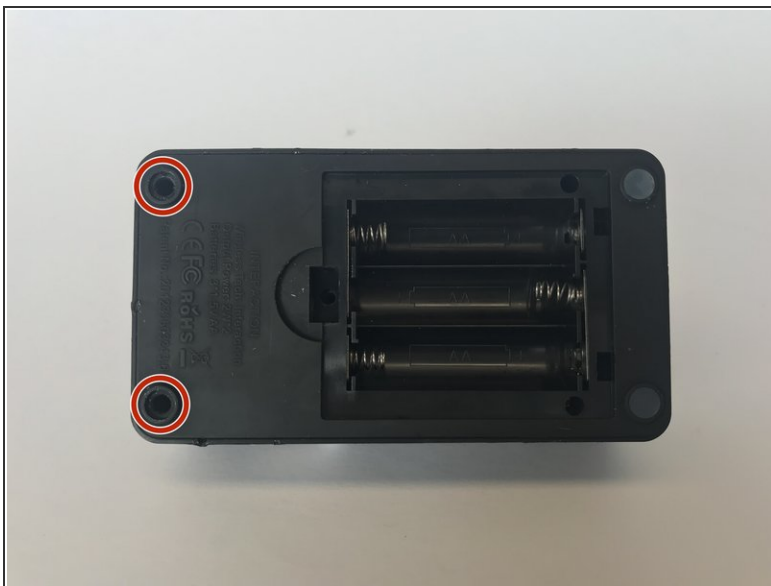
- [Battery Cover](#) (1)
- [Battery](#) (3)
- [Bottom Pad](#) (2)
- [Philips 0 Head Screw](#) (5)
- [Philips 1 Head Screw](#) (3)
- [Battery Case](#) (1)
- [Circuit Board](#) (1)
- [Speaker](#) (2)

Step 1 — Intempo Wireless Speaker Complete Disassembly



- Squeeze latch, tilt and remove battery cover to retrieve the batteries.

Step 2



- Pry the top 2 pads to reveal screws using a flat head screwdriver.

Step 3



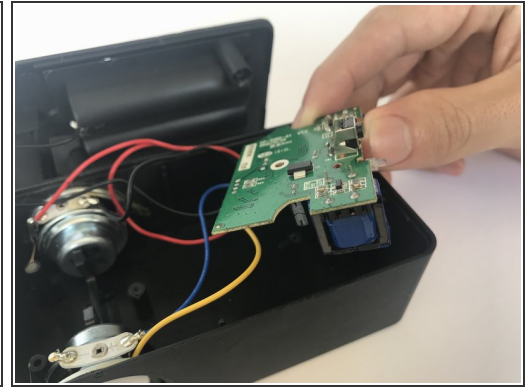
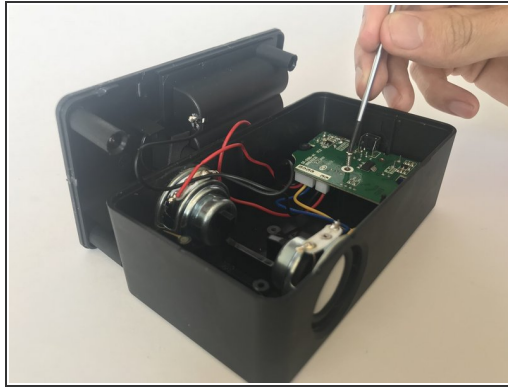
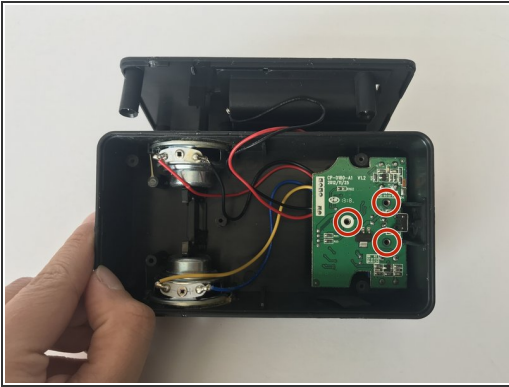
- Unscrew the 5 screws (9 effective threads each) using Phillips 0 head screwdriver.

Step 4



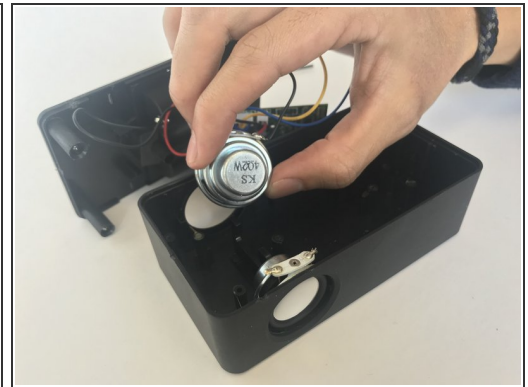
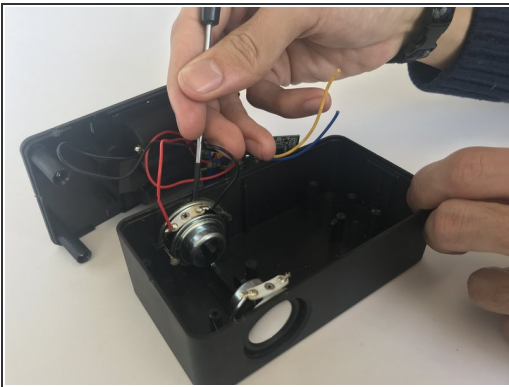
- Pry up the battery case from the main part using flat head screwdriver.
- ⚠ Be careful not to damage the sides of the speaker when prying with the screwdriver.

Step 5



- Unscrew the 3 screws (with 9 effective threads each) using Phillips 1 head screwdriver.
- Lift the circuit board out from the main part.

Step 6



- Loosen the glue holding the speaker on the case using the Lever Prybar.
- Slide the speaker upwards to detach them.

⚠ Prying the speaker from the case might cause aesthetic damage.

⚠ Be careful not to break the connections of the speaker wires.