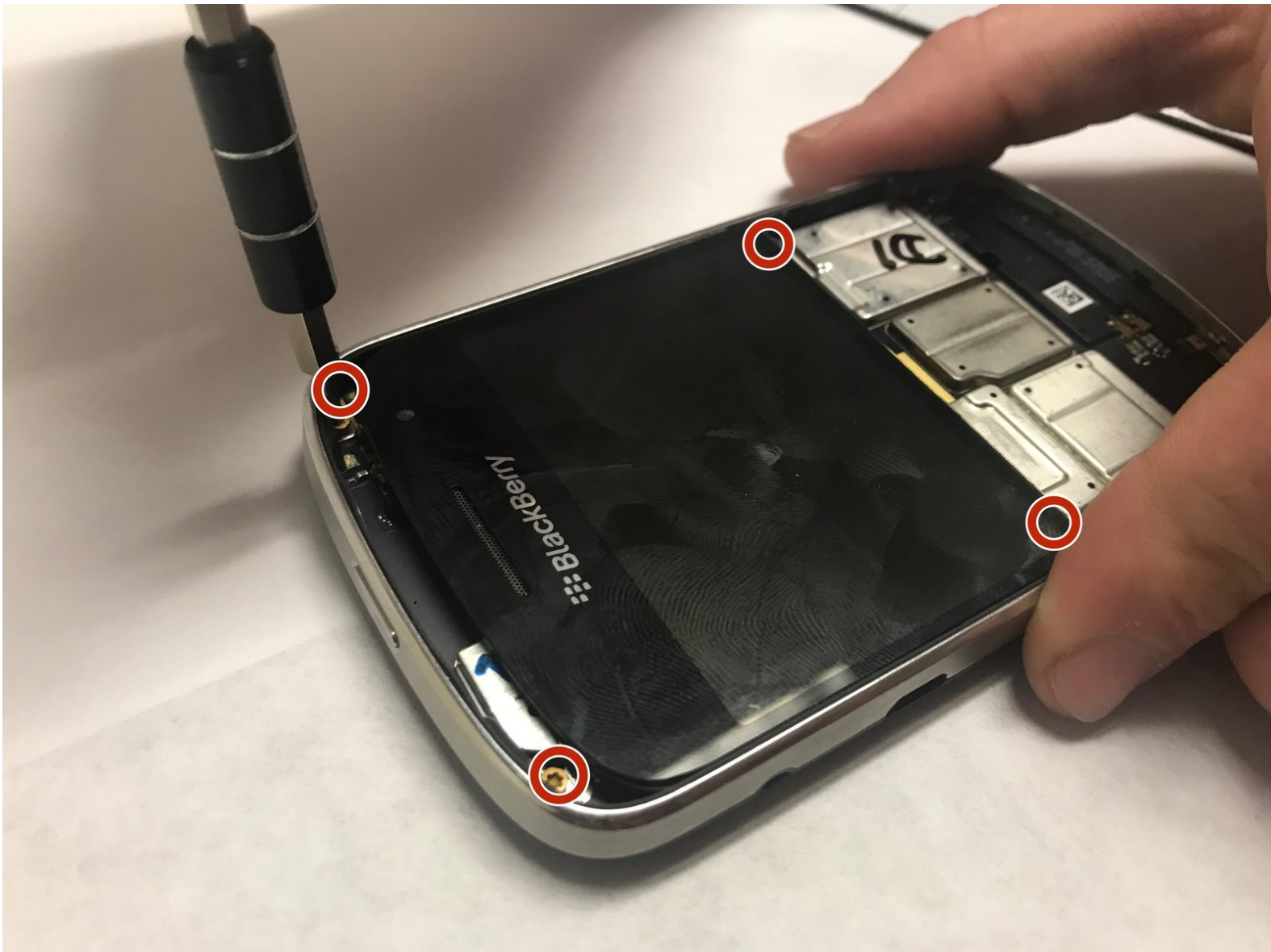




# Blackberry Bold 9900 Back Case Replacement

This guide will show you how to replace your Blackberry Bold 9900 back case.

Written By: Sowmika



---

## INTRODUCTION

Replacing the back case of the BlackBerry Bold 9900 is a tedious task, but it will allow you to become more familiar with your device, increase the lifespan of the device, and reduce e-waste.

---



### TOOLS:

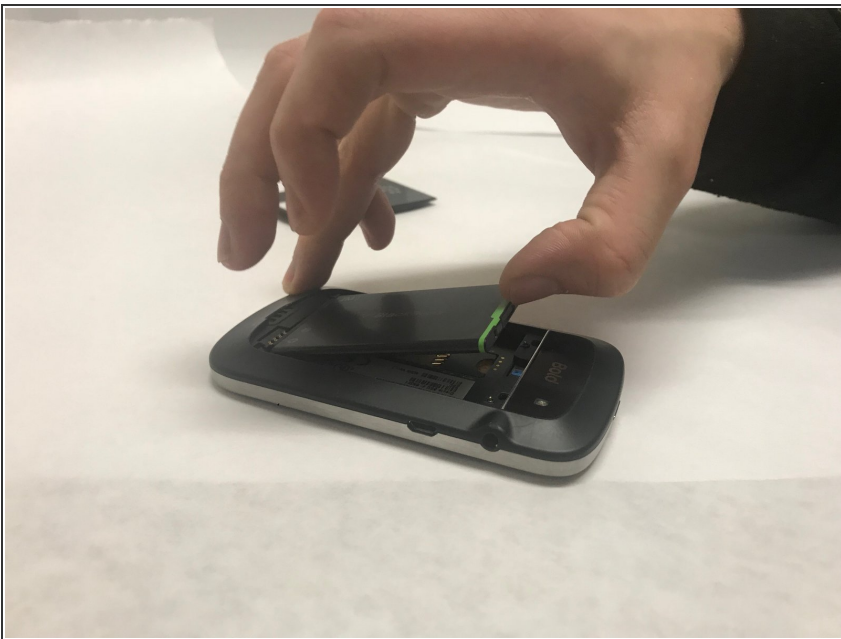
- [Spudger](#) (1)
  - [T5 Torx Screwdriver](#) (1)
-

## Step 1 — Battery



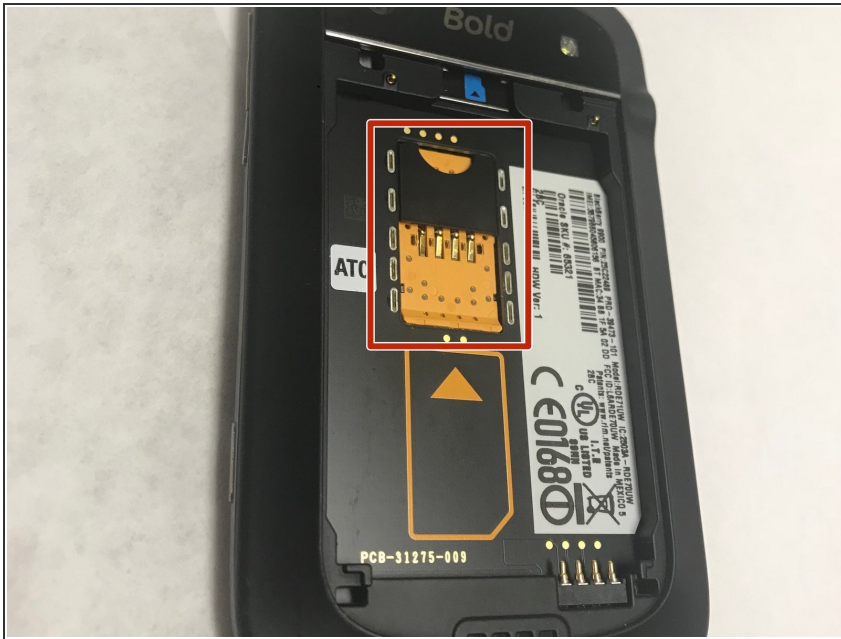
- Place phone screen down.
- Use your finger to lift upward on the battery case.
- Pull the cover away from the battery.

## Step 2



- Lift the edge of battery with the green stripe upward to remove battery.

### Step 3 — Mini-SIM removal



- The Mini-SIM card is located inside the red rectangle.
- To remove the Mini-SIM Card, push and slide the card inward towards the top of the phone. It will be ejected.

### Step 4 — MicroSD card



- The MicroSD card is located where the red rectangle is shown.
- To remove MicroSD card, push the card inward towards the top of the phone then release. The MicroSD card will be ejected.

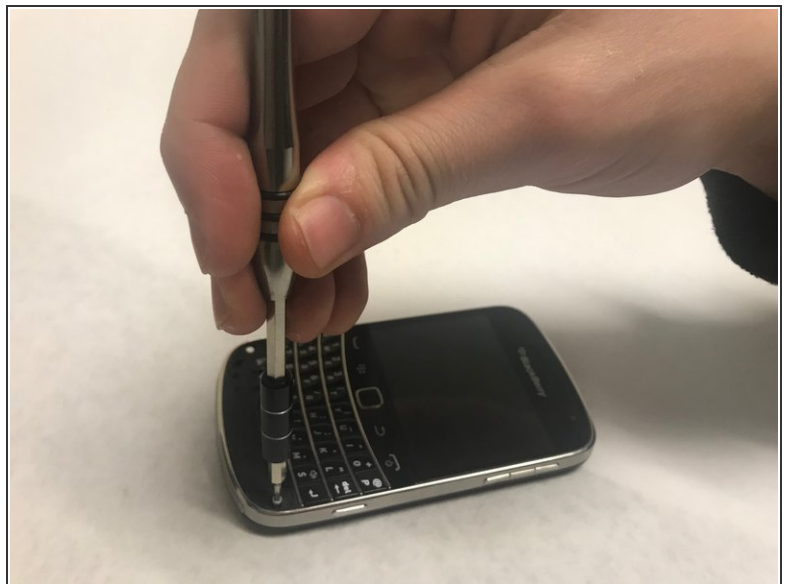


## Step 5 — Keyboard



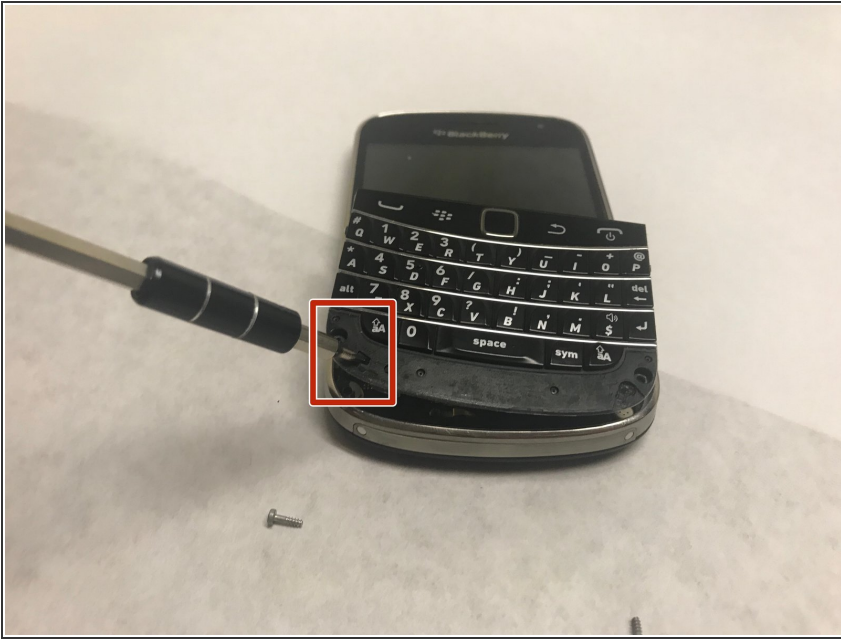
- Lift the bezel at the bottom of the phone up and peel it away from the phone.

## Step 6



- Remove the two exposed screws using the T5 Torx screwdriver.

## Step 7



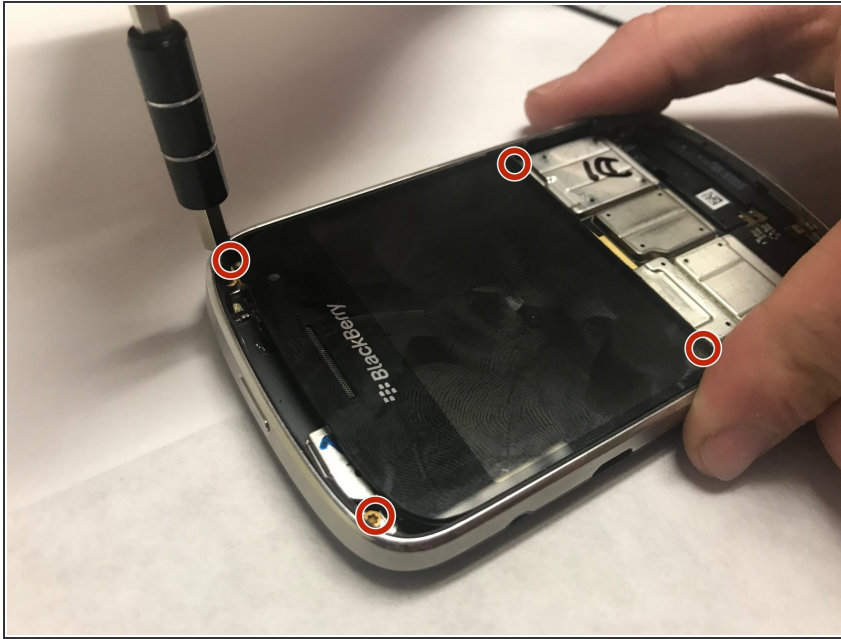
- Now lever the keyboard up using the screwdriver in the indicated hole.

## Step 8



- The keyboard is attached via a ribbon cable. Pull the cable up to remove the keyboard.

## Step 9 — Back Case



- Using the T5 Torx Screwdriver, remove the four torx screws that are located on the bottom half of the device

## Step 10



- Now, carefully and gently using your fingers, lift and remove the assembly from the back case.

To reassemble your device, follow these instructions in reverse order.