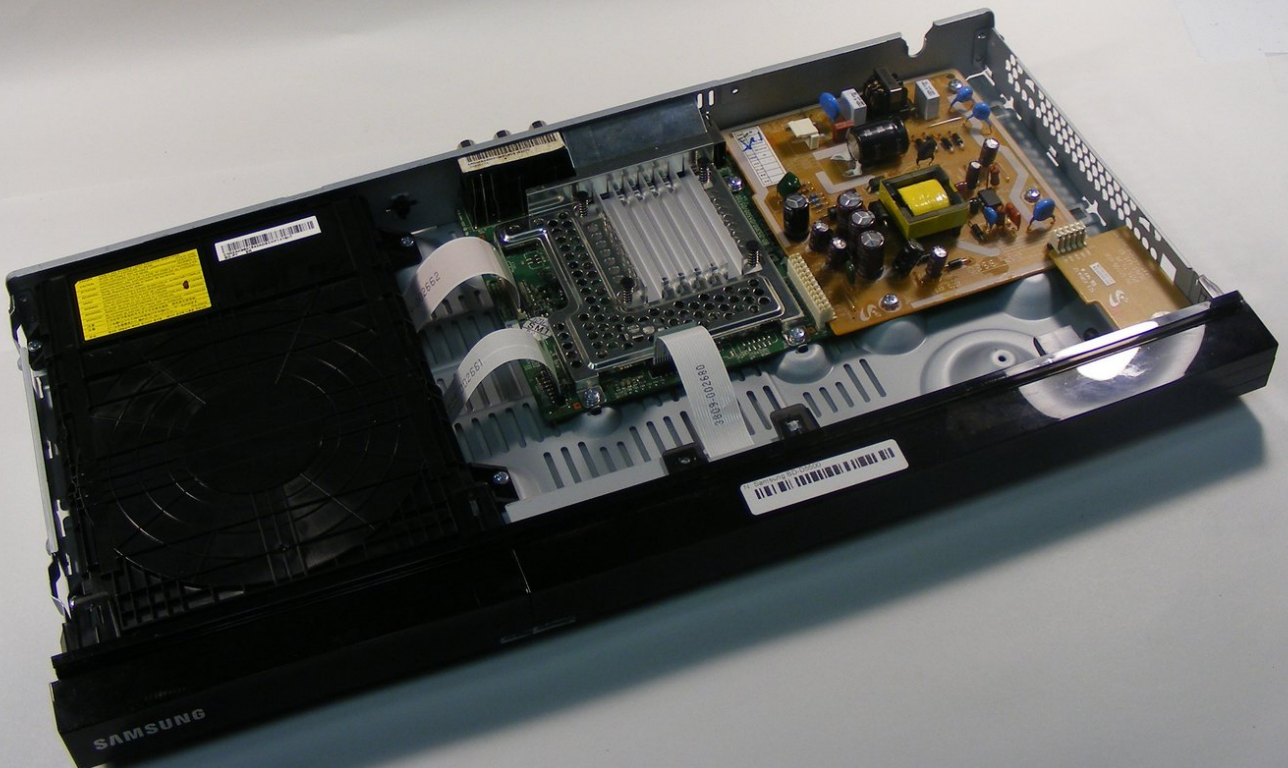




# Samsung BD-D5500 Disc Drive Replacement

This guide will be showing you how to replace the disc tray on Samsung BD-D5500

Written By: Kenya Wilson



---

## INTRODUCTION

Before you begin this guide you will need to refer to the guide on how to take the top off of the device. Once you have completed that you can begin removing your disc drive.

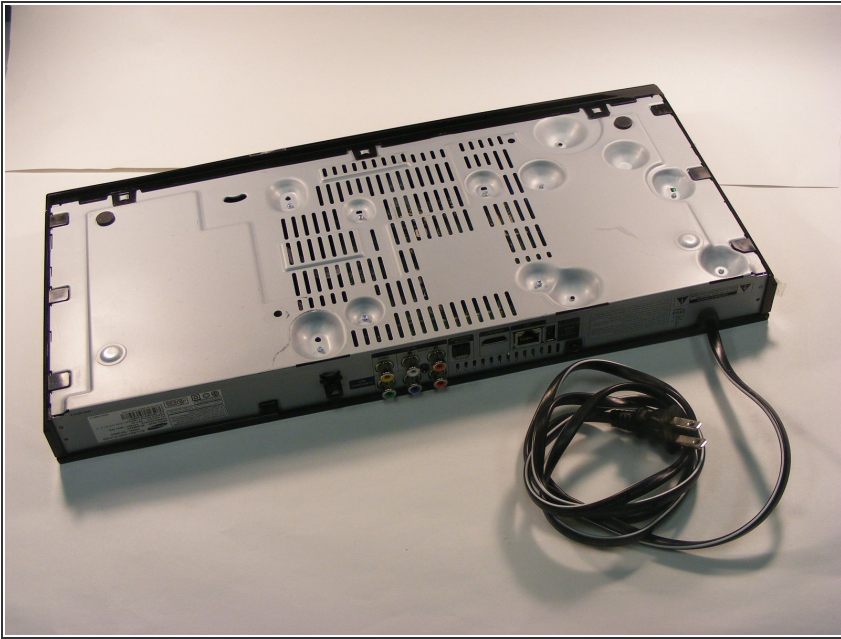
---



### TOOLS:

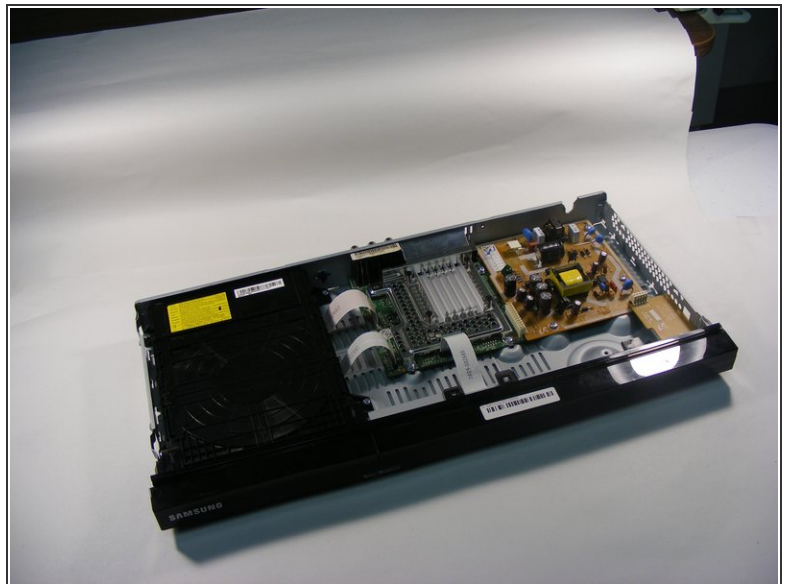
- [iFixit Opening Tool](#) (1)
  - [Spudger](#) (1)
  - [Phillips #2 Screwdriver](#) (1)
-

## Step 1 — Samsung BD-D5500 Disassembly



- To begin, turn the device over so that the bottom is facing up. There are 9 black clips that attach the plastic body to the case. Remove these clips from the case.

## Step 2

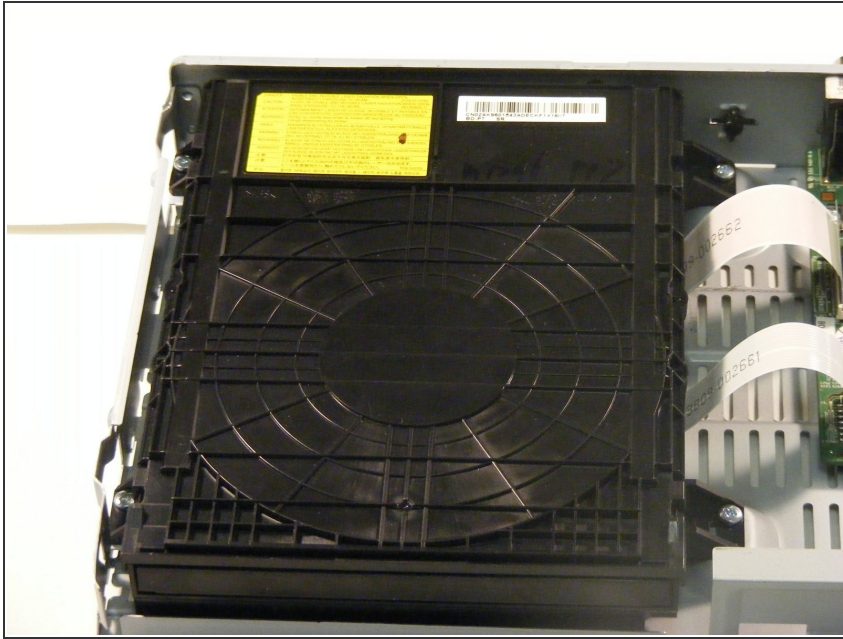


- Use a Phillips #2 screwdriver to remove the screw that attaches the top cover to the rear of the device. This will allow you to remove the cover.

 This is how your device will look after you remove the top.

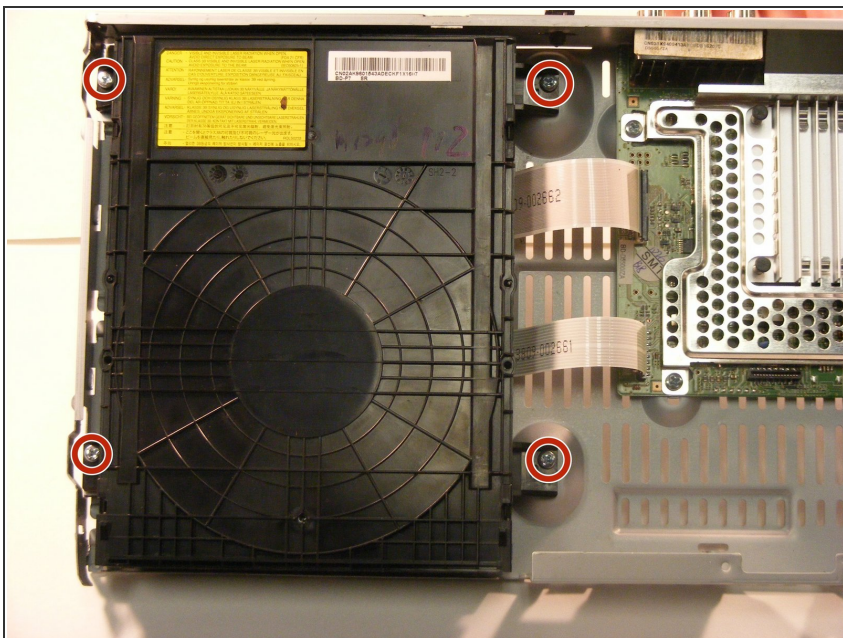


## Step 3 — Disc Drive



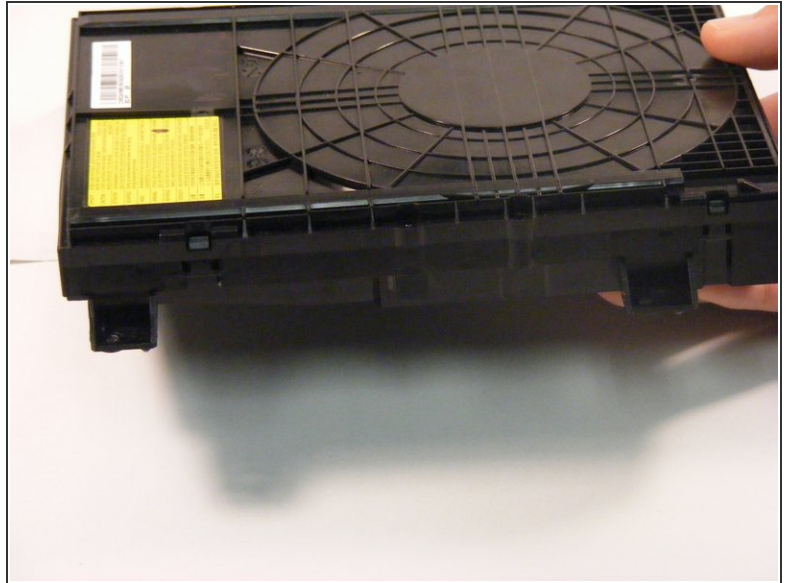
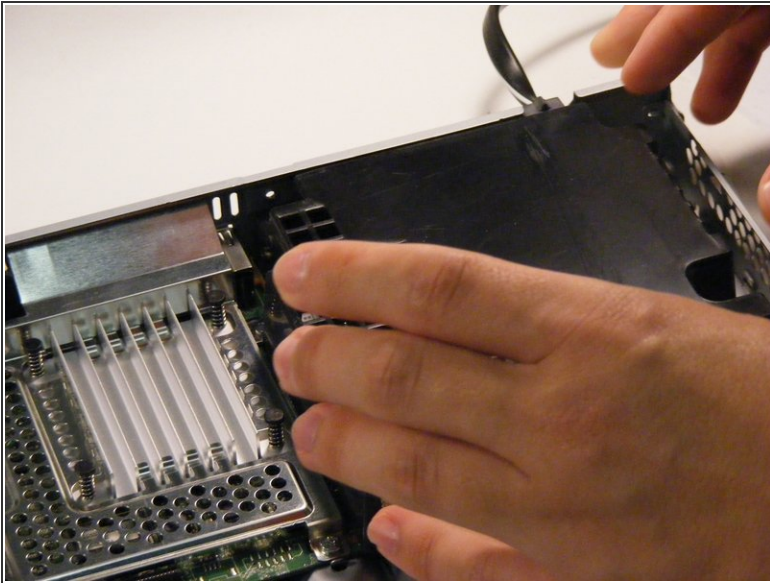
- Please locate your disc drive
- Your disc drive should look like the one pictured. If your disc drive does not look as follows please confirm that you are looking at the right guide.

## Step 4



- Once you have located your disc drive it is time to remove the drive
- You will see four silver 1.1mm Phillips #2 screws located on each corner of the disc drive.

## Step 5



- Once you have removed the four screws using a Phillips #2 screwdriver you are now able to take out the disc drive
- Carefully remove the disc drive being sure not to disrupt anything else in the Blu-Ray player.
- This is how your disc drive should look if you have removed it from the player correctly.

To reassemble your device, follow these instructions in reverse order.