



# ProLine HB25 Disassembly

This guide provides the necessary information...

Written By: Jorma van Dalen



---

## INTRODUCTION

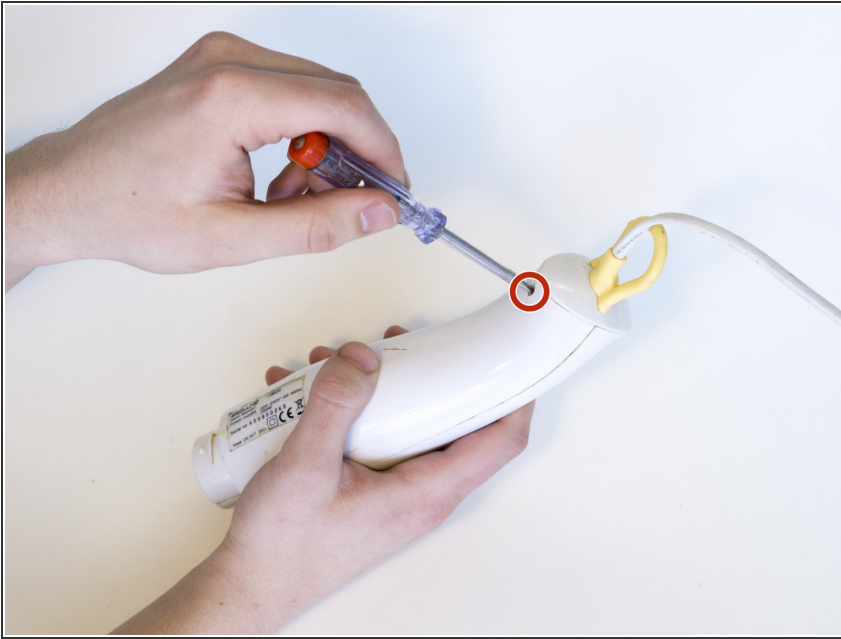
This guide provides the necessary information on fully disassembling the Proline HB25 hand blender.

---

### TOOLS:

- [Phillips #00 Screwdriver](#) (1)
  - [6-in-1 Screwdriver](#) (1)
  - [Spanner 3.0 Screwdriver](#) (1)
-

## Step 1 — ProLine HB25 Disassembly



- Unscrew the screw on the back of the product.

## Step 2



- Pull out the backtab of the housing.
- Push in the snapfits with, for instance, a screwdriver.

## Step 3



- Separate the housing with calibrated force.

**⚠ Keep your fingers away from the housing and do not bend or break the housing.**

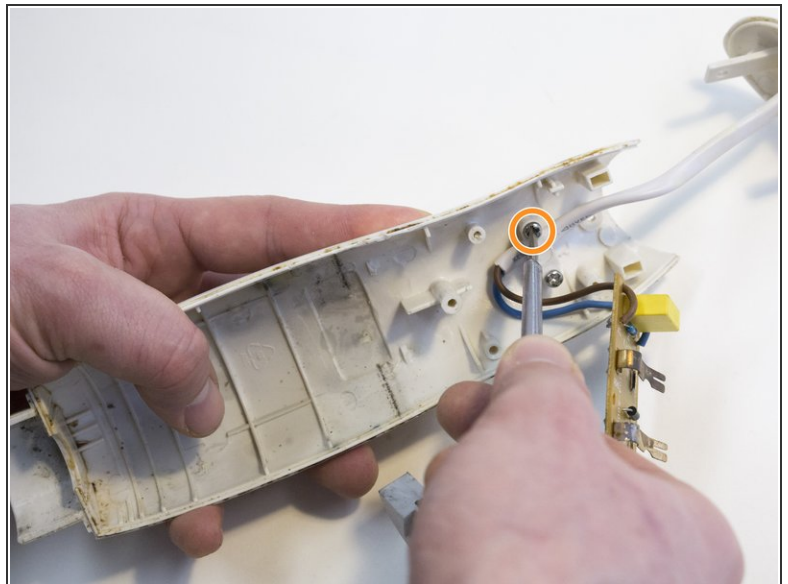
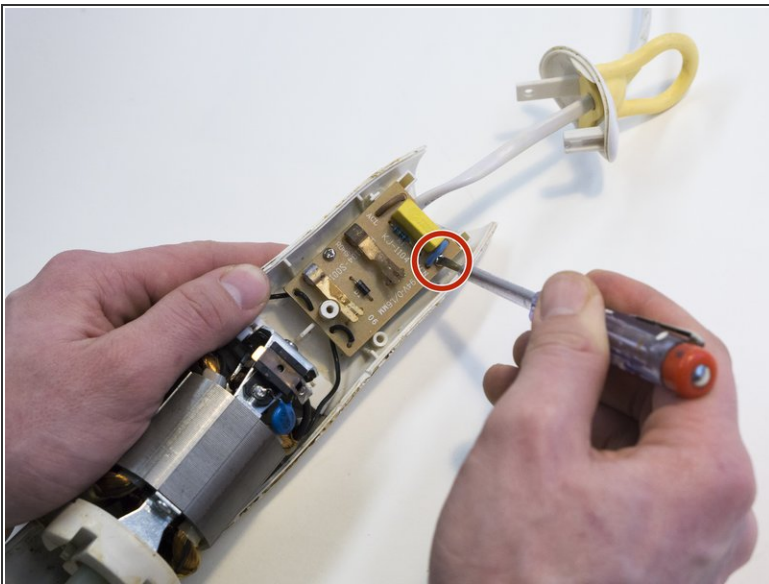
- Use a flathead screwdriver to push out the lower function button.
- Remove the separating device.

## Step 4



- Unscrew the hidden screw under the button.

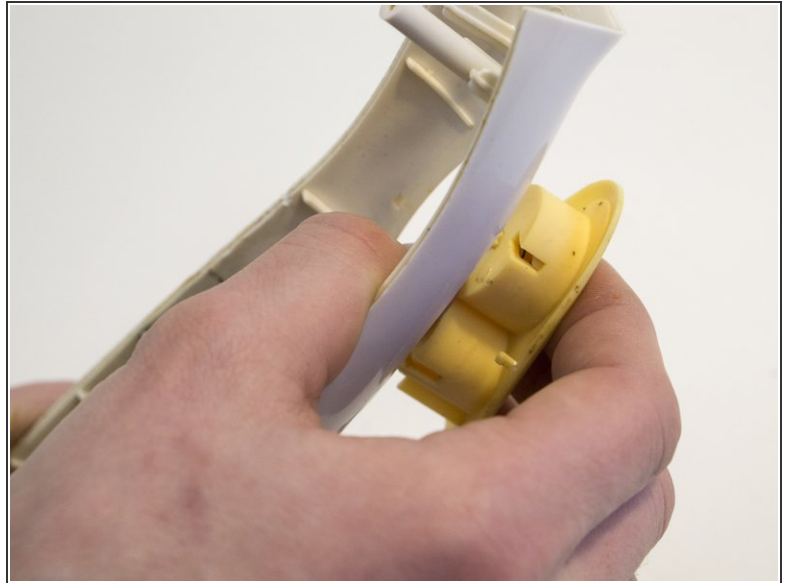
## Step 5



- Open the housing.
- Unscrew the circuit board.
- Unscrew the wire lock.

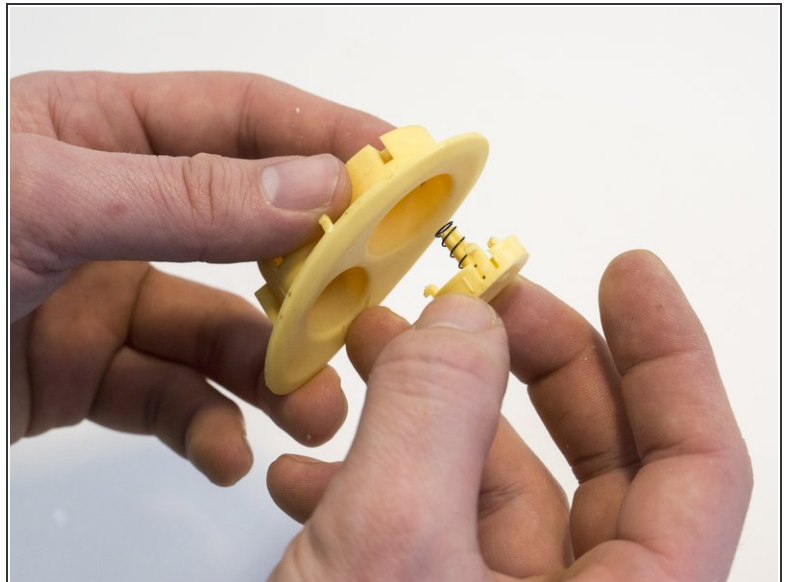
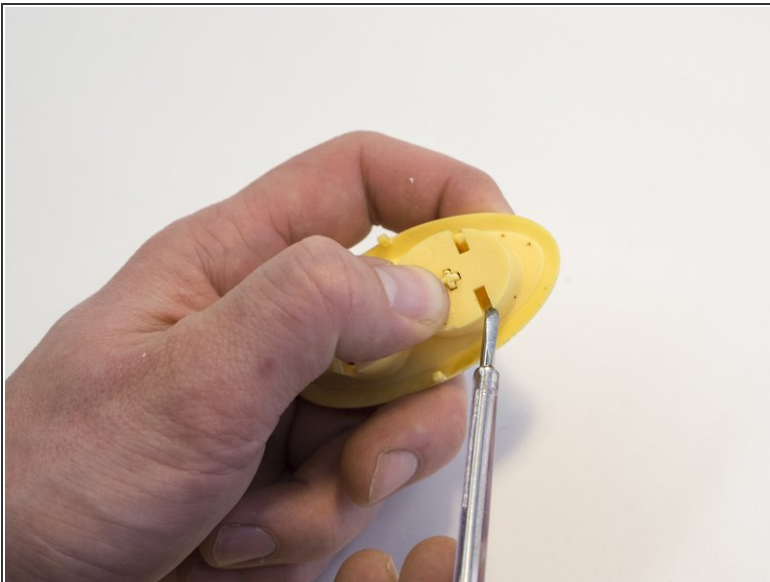


## Step 6



- Push the housing of the button out of the housing.

## Step 7



- Push on the side of the housing of the button to push the button out of the housing.

**⚠ The spring can jump away when you push out the button.**

To reassemble your device, follow these instructions in reverse order.