



Cuisinart DCC-1200 Coffee Carafe Handle Replacement

The handle on coffee carafe can become loose or cracked over time. This guide will show how to replace it.

Written By: Austin Wheaton



INTRODUCTION

Is the handle on the carafe of your Cuisinart coffee maker lose or damaged? If so, this guide will provide instructions on how to replace the handle on the carafe. To complete this task all you will need is a bit driver with the PH1 Phillips bit.



TOOLS:

- [Metal Spudger](#) (1)
 - [Phillips #1 Screwdriver](#) (1)
-

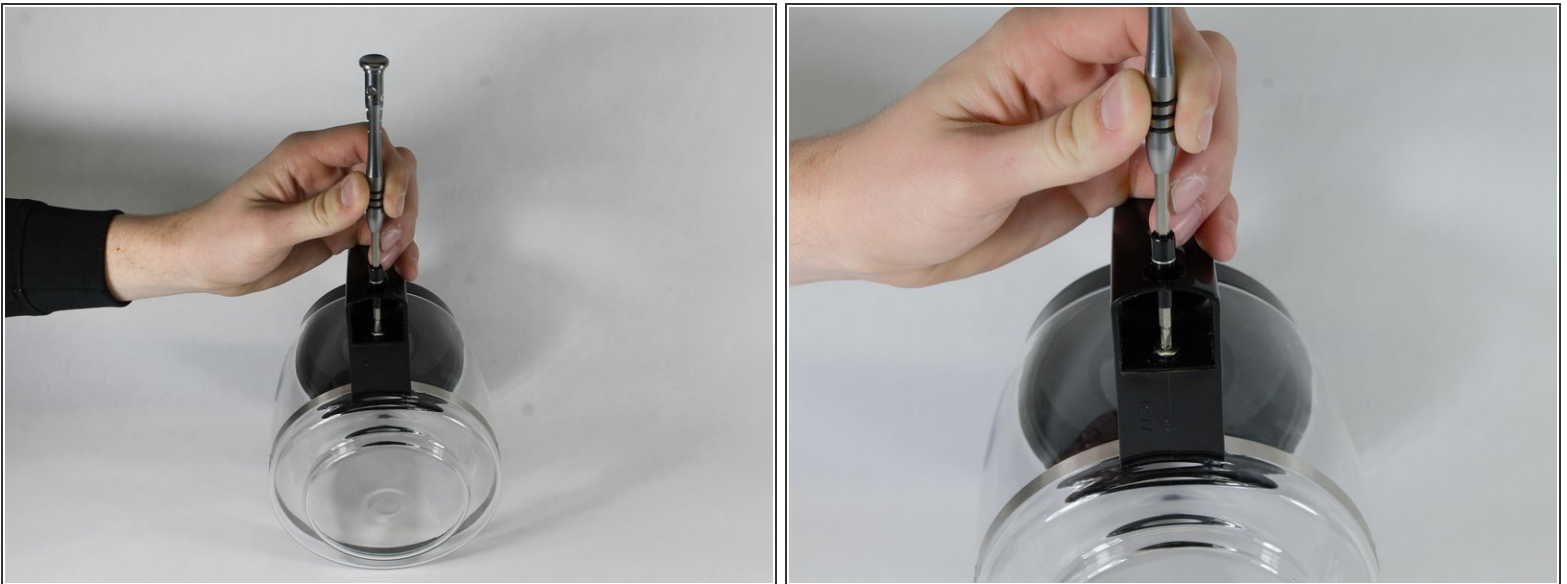
Step 1 — Coffee Carafe Handle



- Wedge the metal spudger between the plug and the handle.
- Carefully pry the plug with the metal spudger by applying pressure around the plug.

⚠ Too much pressure and prying can damage the plug.

Step 2



- Use the bit driver with the Phillips PH1 bit to remove the 27 millimeter long screw in the base of the handle.

Step 3



- Lift up on and remove the lid from the carafe.

Step 4



- Position the metal spudger underneath the top cap of the handle.
 - Gently pry up to extract the upper assembly cap.
- ⚠ Pry carefully to prevent from causing aesthetic damage to upper assembly cap.

Step 5



- Use the bit driver with the Phillips PH1 to remove the 5 millimeter screw in upper assembly of handle.
- Remove handle by lifting straight up.

To reassemble your device, follow these instructions in reverse order.