



# Blackberry Key 2 LE Keyboard Replacement

If the device keyboard is not responding ;use...

Written By: Crystal Loomis



# INTRODUCTION

If the device keyboard is not responding ;use this guide to start the replacement process.



## TOOLS:

- [Magnetic Project Mat](#) (1)
- [Phillips #1 Screwdriver](#) (1)
- [Wedging Tool](#) (1)



## PARTS:

- [Blackberry key 2 LE Keyboard](#) (1)

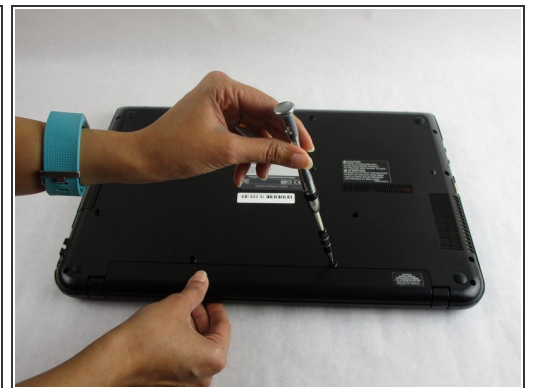
## Step 1 — Keyboard



⚠ Turn off your device before starting.

- Flip the phone over so that the back camera is facing you.

## Step 2



- Use a your hands to remove the backing of the phone.

### Step 3



- Use your phillips screwdriver to begin removing all the accesible screws.

### Step 4



- Now begin to remove the coverings above and below the middle plate with your hand.

## Step 5



- use your hand or a tool to remove the tabbing on the metal plate covering the battery.

## Step 6



- Remove the metal plate covering the battery.

## Step 7



- Use your wedging tool to begin removeing the adhesive under the battery.

## Step 8



- Remove these two screws with your phillips screw driver.

## Step 9



- Open the two metal tabs

## Step 10



- Flip the phone back over with the screen facing you.

## Step 11



- Begin to use the wedging tool to remove the space bar off of the keyboard.

## Step 12



- remove the screws on each end of the space bars vacant lcoation.



## Step 13



- Grab the wedging tool and begin wedging the old keyboard.

## Step 14



- begin wedging the back of the keyboard until free.

## Step 15



- Begin deperating the keyboard from the backing.

## Step 16



- grab your replacement keyboard and connect it to the backing of the old keyboard.

## Step 17



- place the keyboard back onto the front of the phone

## Step 18



- once placed, hold the keyboard onto the phone while clicking the two metal plates back down to connect the keyboard.

To reassemble your device, follow these instructions in reverse order.