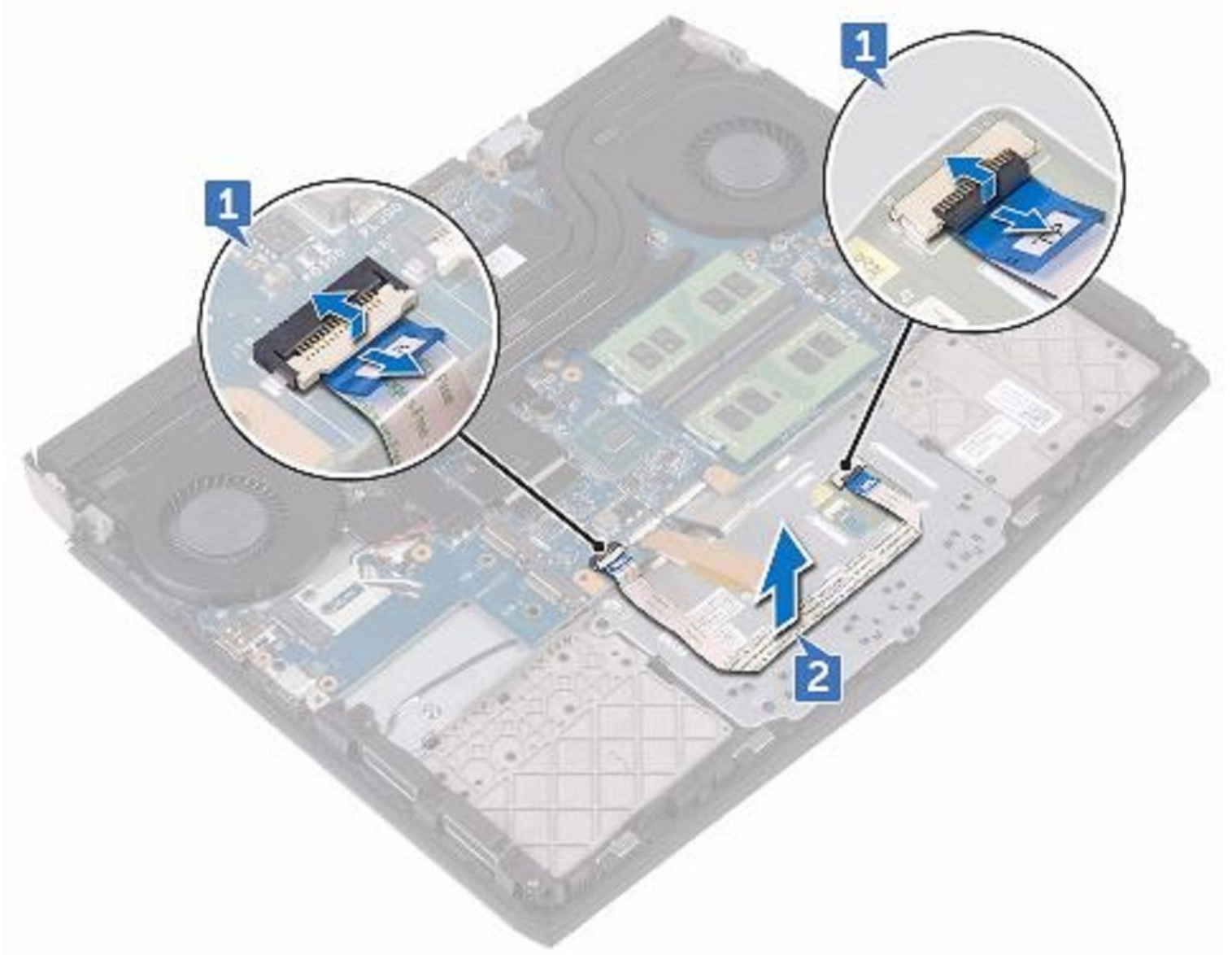




Dell Alienware 13 R3 Touch Pad Replacement

In this guide, we will be showing you how to...

Written By: Terrence15



INTRODUCTION

In this guide, we will be showing you how to remove and replace the Touch Pad.



TOOLS:

- [Pro Tech Toolkit](#) (1)
-

Step 1 — Loosen the Screws



⚠ WARNING: Before working inside your computer, read the safety information that shipped with your computer and follow the steps in [Before Working Inside Your Computer](#). After working inside your computer, follow the instructions in [After Working Inside Your Computer](#).

- Loosen the five captive screws that secure the base cover to the computer base.

Step 2 — Pry the Base Cover



- Using a plastic scribe, gently pry the base cover to release the tabs on the base cover from the slots on the computer base.

Step 3 — Lift the Base Cover



- Lift the base cover off the computer base.

Step 4 — Disconnect the Battery Cable



- Using a plastic scribe, disconnect the battery cable from the system board.

Step 5 — Press and Hold the Power-Button



- Press and hold the power button for five seconds to ground the system board.

Step 6 — Connect the Battery Cable



- Connect the battery cable to the system board.

Step 7 — Slide the Tabs



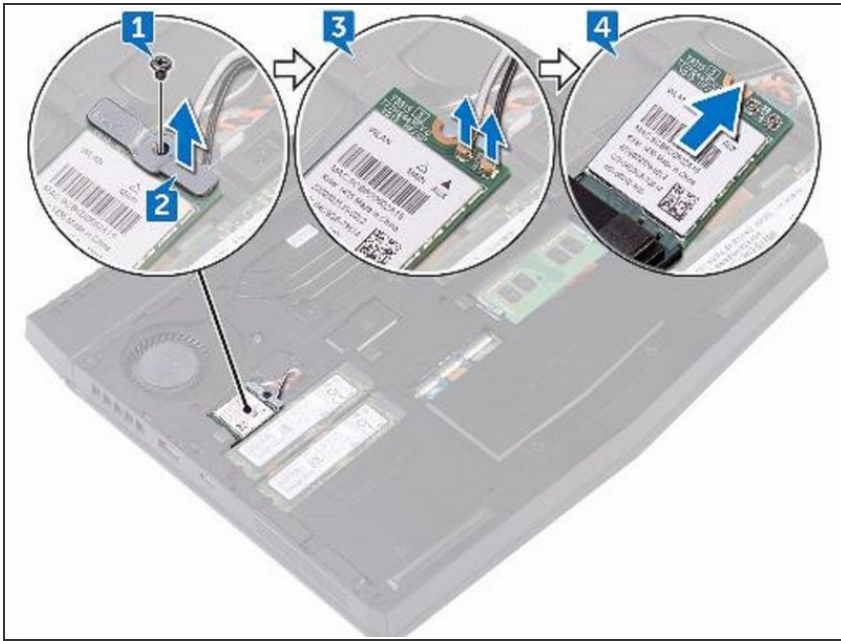
- Slide the tabs on the **NEW** base cover into the slots on the computer base and snap the base cover into place

Step 8 — Tighten the Five Captive Screws



- Tighten the five captive screws that secure the base cover to the computer base.

Step 9 — Align the Notch

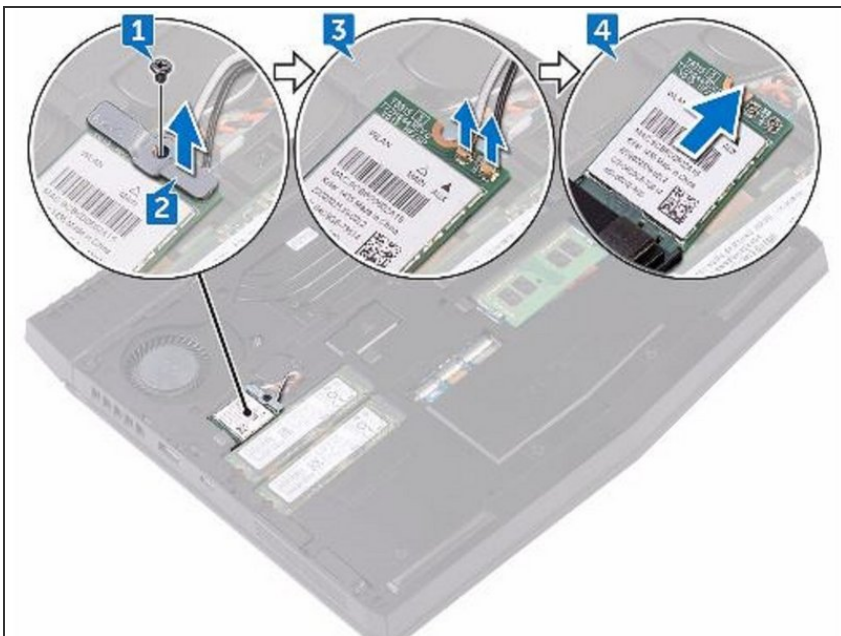


⚠ WARNING: Before working inside your computer, read the safety information that shipped with your computer and follow the steps in [Before Working Inside Your Computer](#). After working inside your computer, follow the instructions in [After Working Inside Your Computer](#).

⚠ CAUTION: To avoid damaging the wireless card, do not place any cables under it.

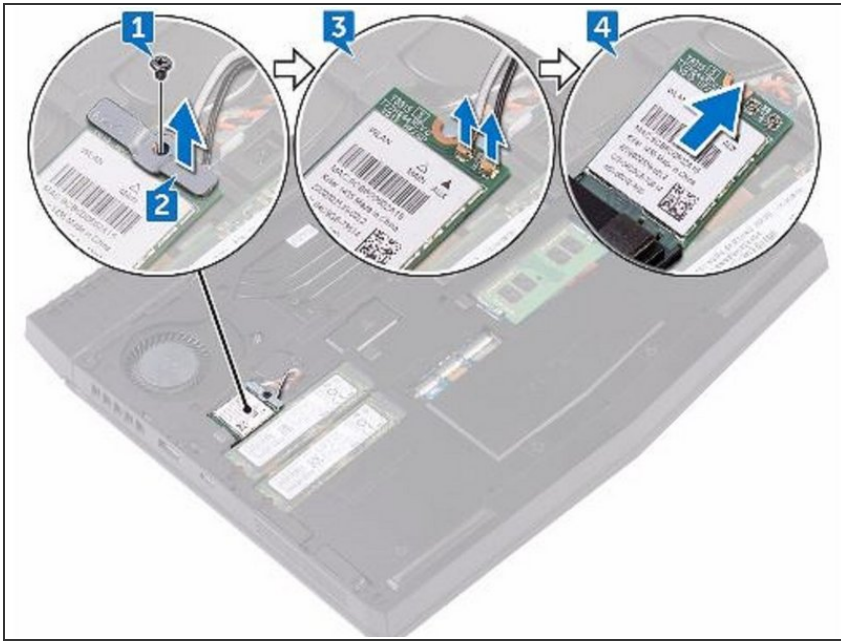
- Remove the screw (M2x3) that secures the wireless card and bracket to the computer base.

Step 10 — Lift the Wireless-Card Bracket



- Lift the wireless-card bracket off the wireless card.

Step 11 — Disconnecting the Antenna Cables



- Disconnect the antenna cables from the wireless card.

Step 12 — Align the Notch



⚠ CAUTION: To avoid damaging the wireless card, do not place any cables under it.

- Align the notch on the wireless card with the tab on the wireless-card slot.

Step 13 — Slide the Wireless Card



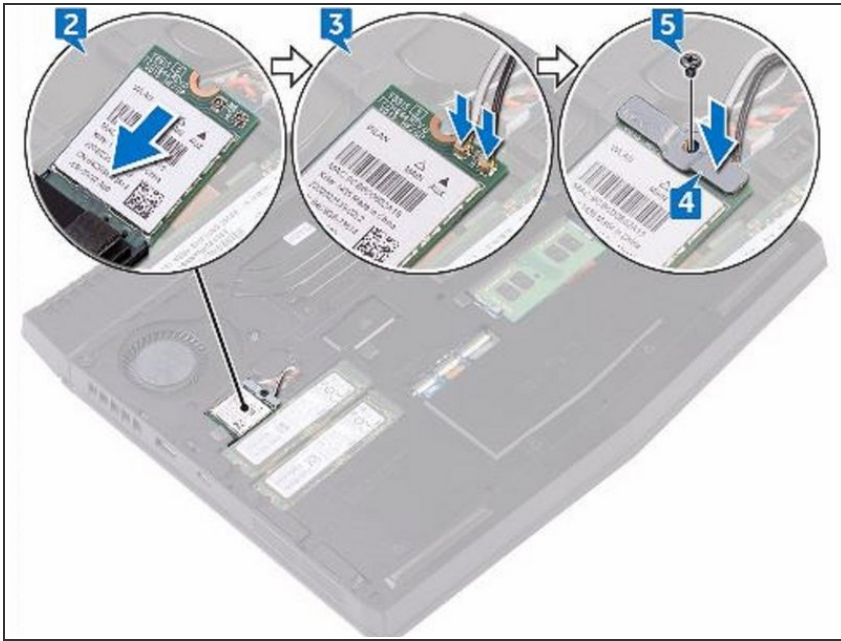
- Slide the **NEW** wireless card at an angle into the wireless-card slot.

Step 14 — Connect the Antenna Cables



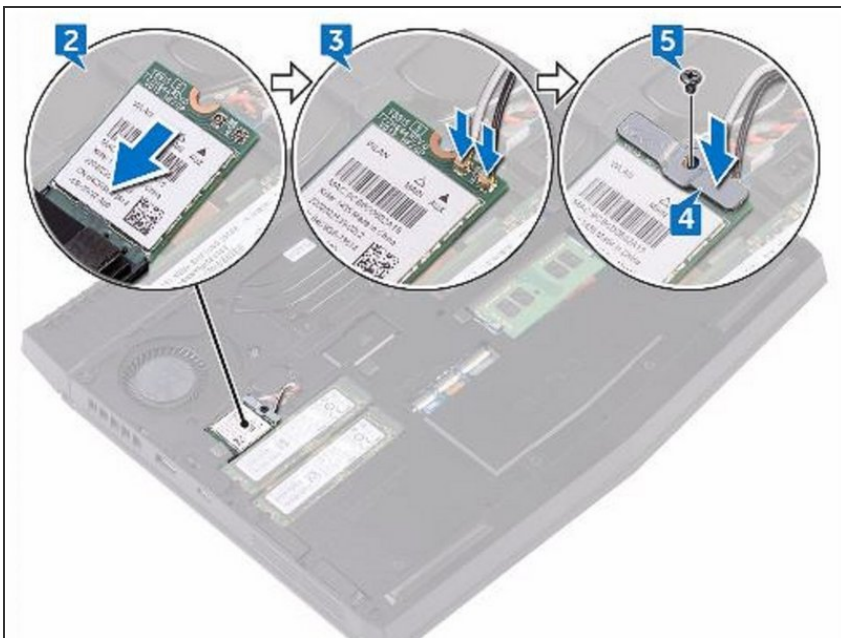
- Connect the antenna cables to the wireless card.

Step 15 — Align the Screw Hole



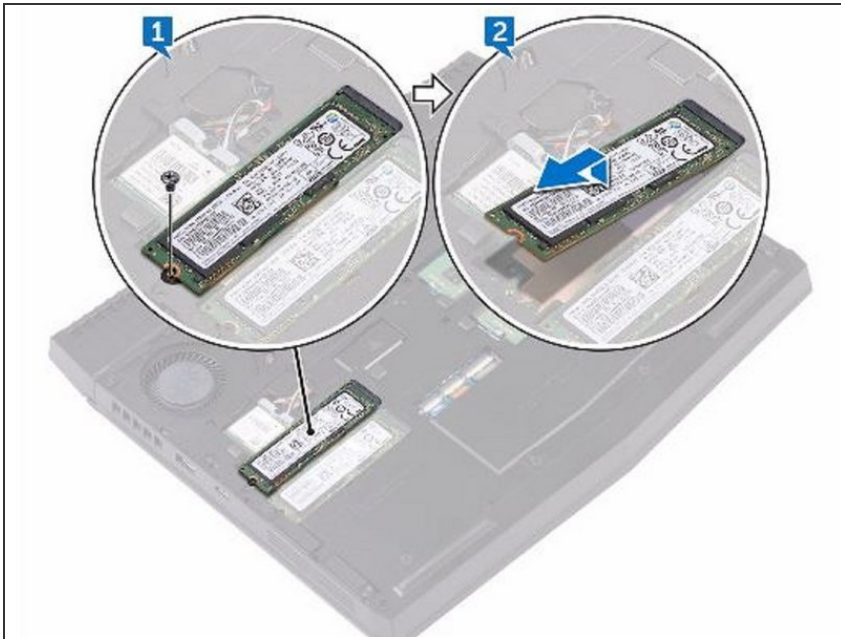
- Align the screw hole on the wireless-card bracket with the screw hole on the wireless card and the computer base.

Step 16 — Replace the Screw



- Replace the screw (M2x3) that secures the wireless-card bracket to the wireless card and the computer base.

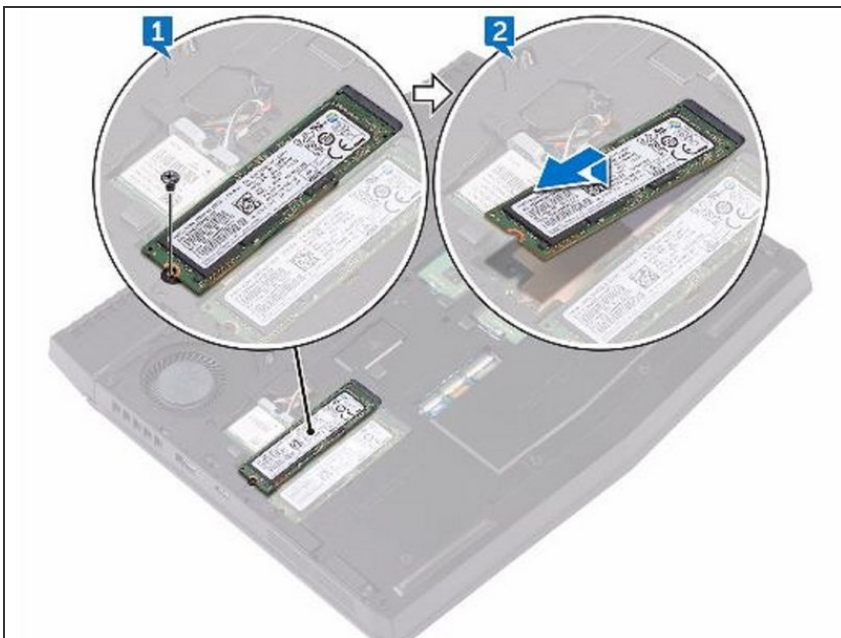
Step 17 — Remove the Screw



⚠ WARNING: Before working inside your computer, read the safety information that shipped with your computer and follow the steps in [Before Working Inside Your Computer](#). After working inside your computer, follow the instructions in [After Working Inside Your Computer](#).

- Remove the screw (M2x3) that secures the solid-state drive to the computer base.

Step 18 — Lift and Slide the Solid-State Drive



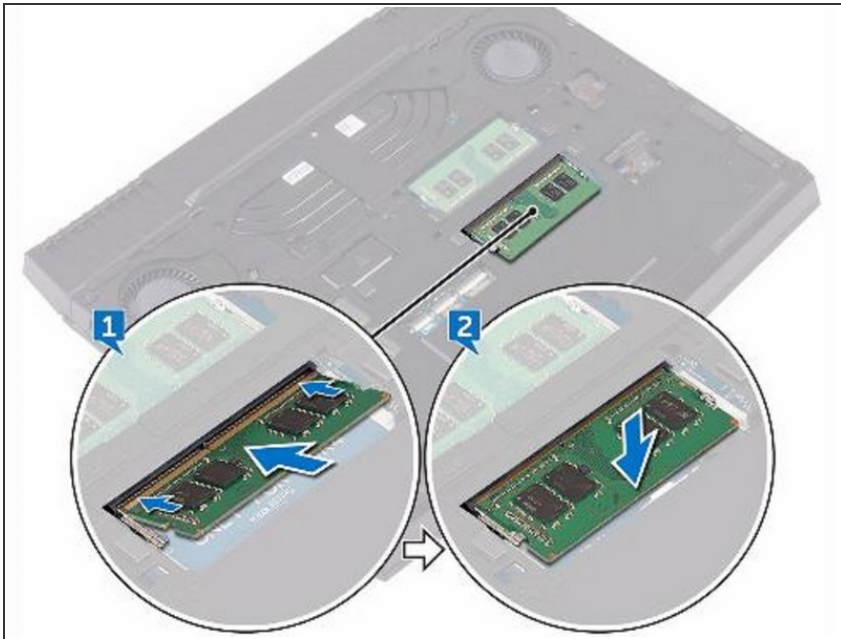
- Lift and slide the solid-state drive from the solid-state drive slot.

Step 19 — Align the Notch



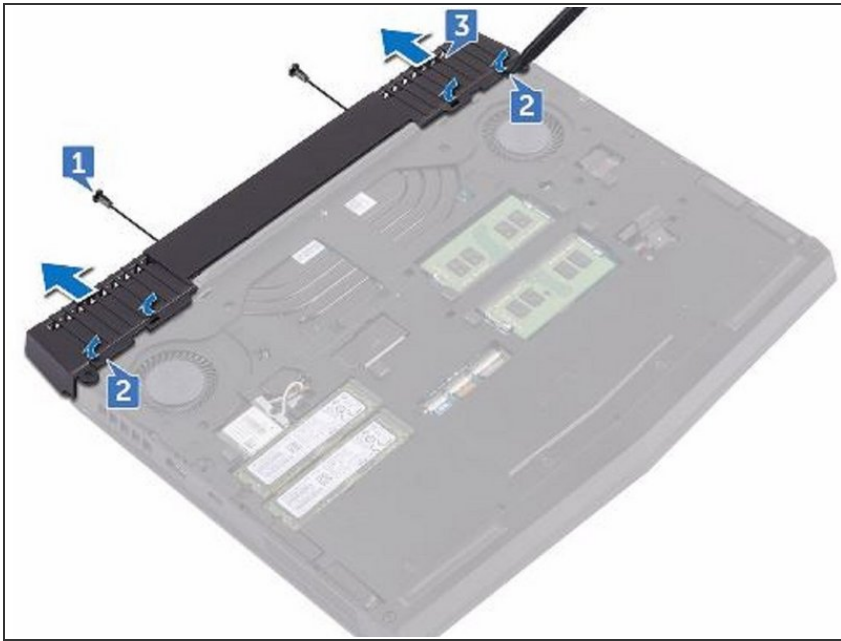
- Align the notch on the **NEW** solid-state drive with the tab on the solid-state drive slot and slide the solid-state drive into the solid-state drive slot.

Step 20 — Press the Memory Module



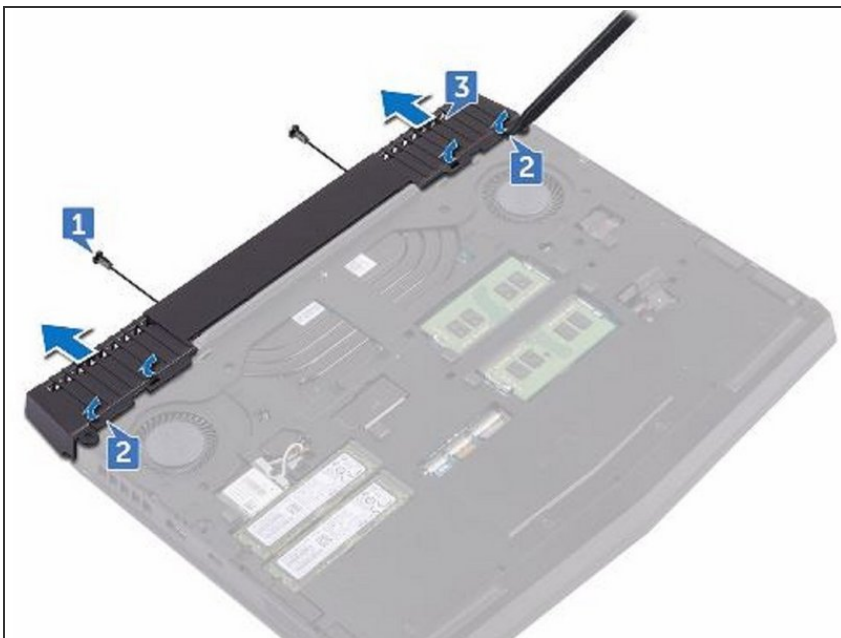
- Press the memory module down until it clicks into place.

Step 21 — Remove the Screws



- Remove the two screws (M2.5x6L) that secure the rear-I/O cover to the palm-rest assembly.

Step 22 — Using a Plastic Scribe



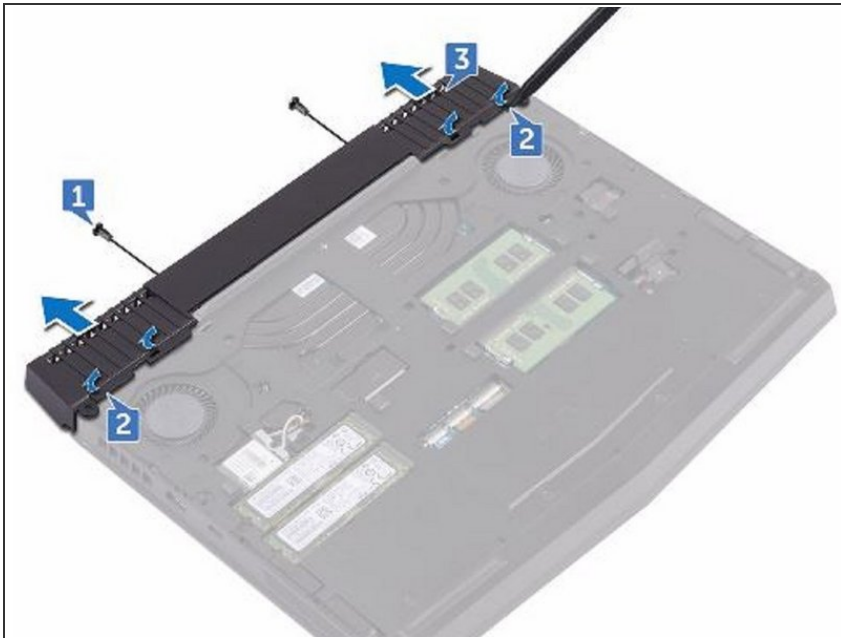
- Using a plastic scribe, gently release the tabs that secure rear-I/O cover to the computer base.

Step 23 — Removing the Rear-I/O



- Slide and remove the rear-I/O cover from the computer base.

Step 24 — Sliding the Rear-I/O



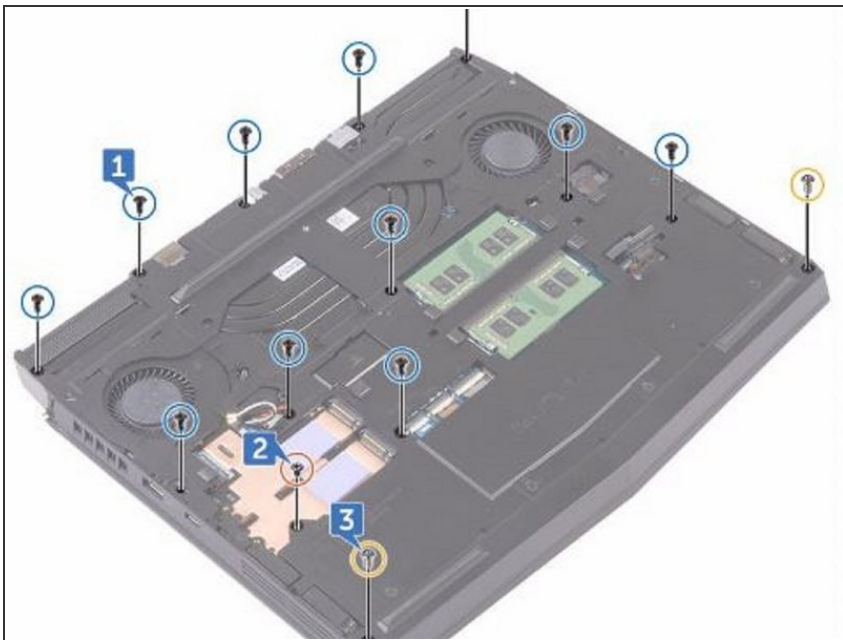
- Slide the **NEW** rear-I/O cover into the slots on the computer base and snap the rear-I/O cover into place.

Step 25 — Replace the two Screws



- Replace the two screws (M2.5x6L) that secure the rear-I/O cover to the palm-rest assembly.

Step 26 — Remove the Screws

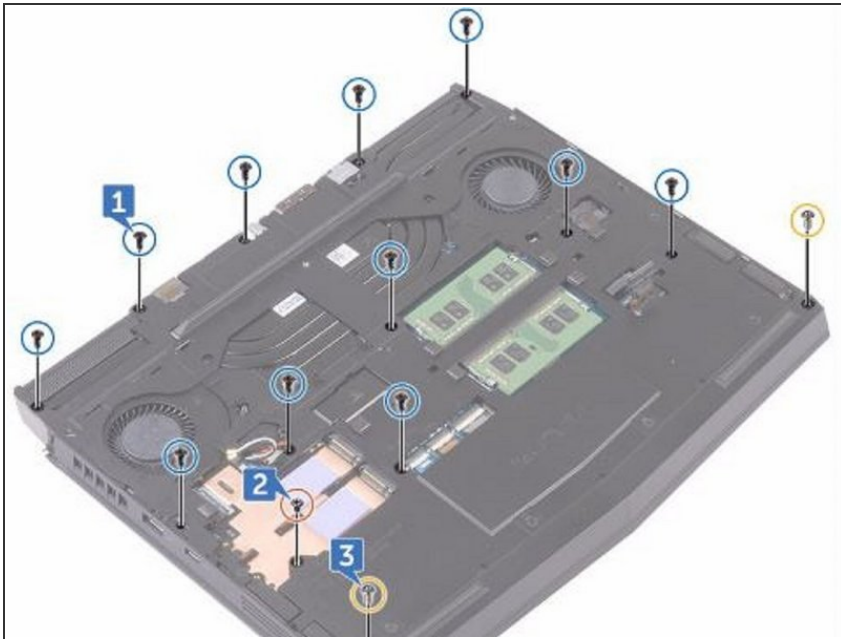


⚠ WARNING: Before working inside your computer, read the safety information that shipped with your computer and follow the steps in [Before Working Inside Your Computer](#). After working inside your

computer, follow the instructions in [After Working Inside Your Computer](#).

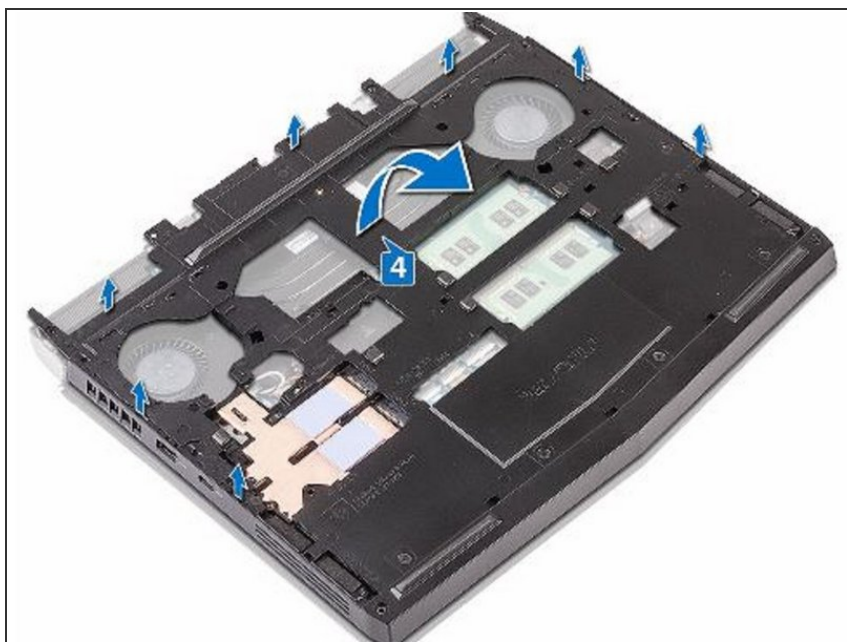
- Remove the eleven (M2.5x6L) screws that secure the computer base to the palm-rest assembly.

Step 27 — Remove the Screw



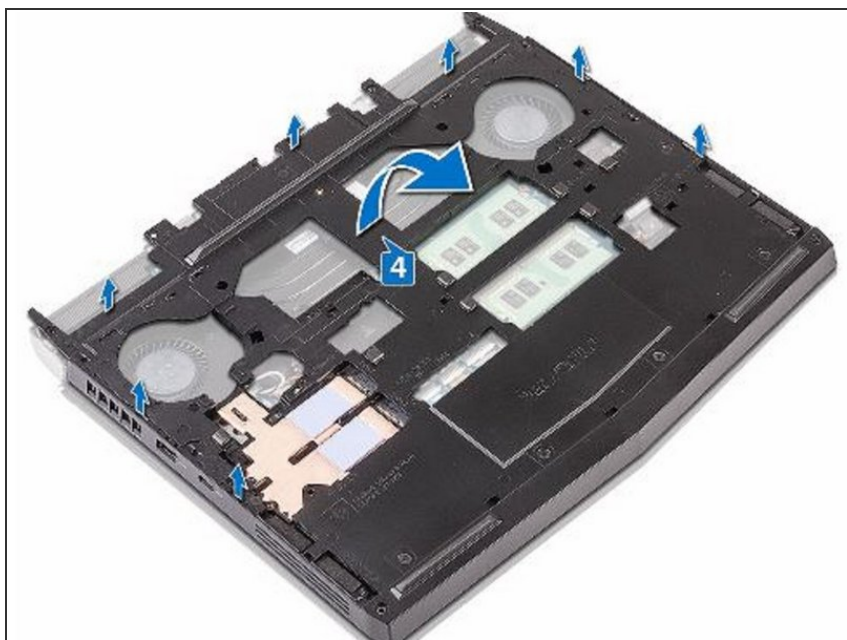
- Remove the (M2x3) screw that secures the computer base to the palm-rest assembly.

Step 28 — Remove the Two Screws



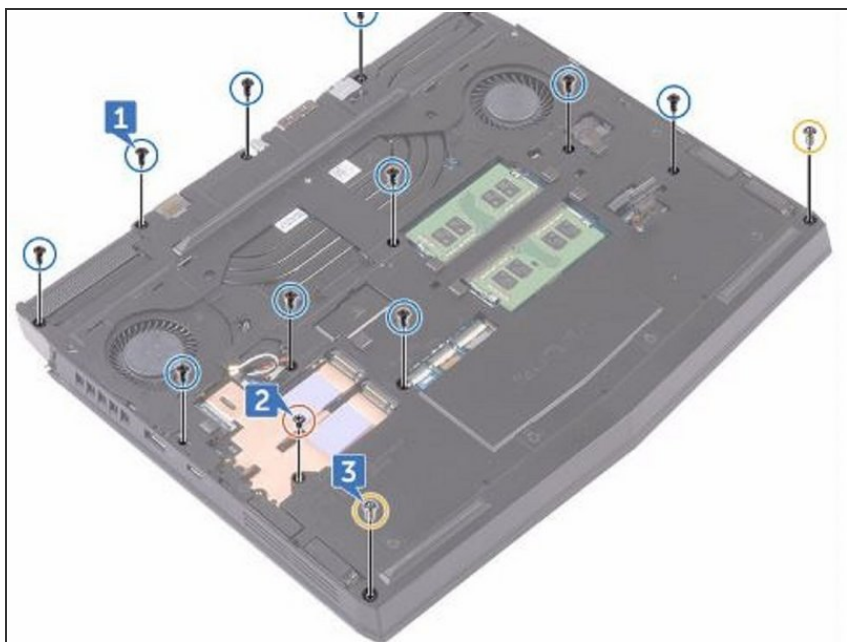
- Remove the two (M2.5x6L) screws that secure the computer base to the palm-rest assembly.

Step 29 — Lift the Computer Base



- Lift the computer base from the palm-rest assembly.

Step 30 — Align the Screw Holes



- Align the screw holes on the **NEW** computer base with the screw holes on the palm-rest assembly.

Step 31 — Replace the Screws



- Replace the two (M2.5x6L) screws that secure the computer base to the palm-rest assembly.

Step 32 — Replace the Screw



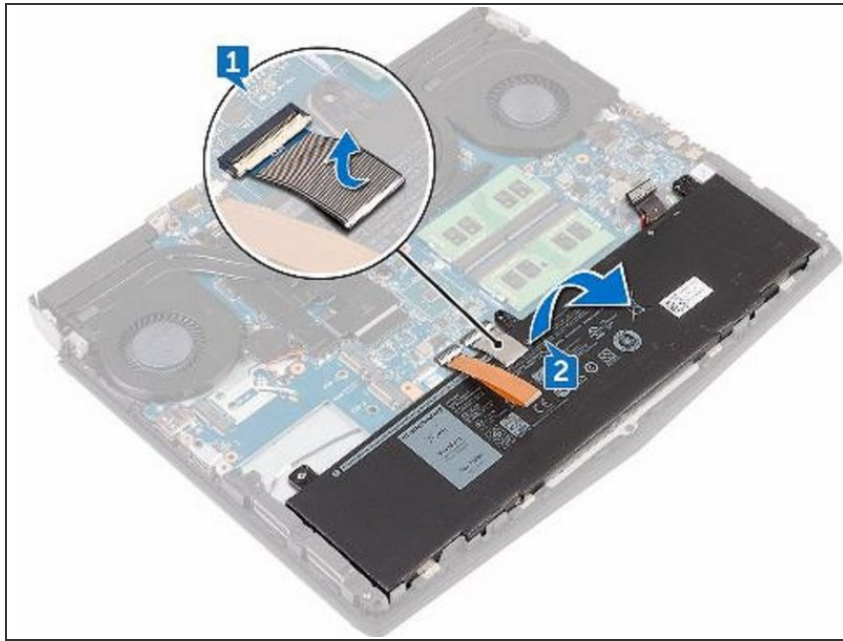
- Replace the (M2x3) screw that secures the computer base to the palm-rest assembly.

Step 33 — Replace the Eleven Screws



- Replace the eleven (M2.5x6L) screws that secure the computer base to the palm-rest assembly.

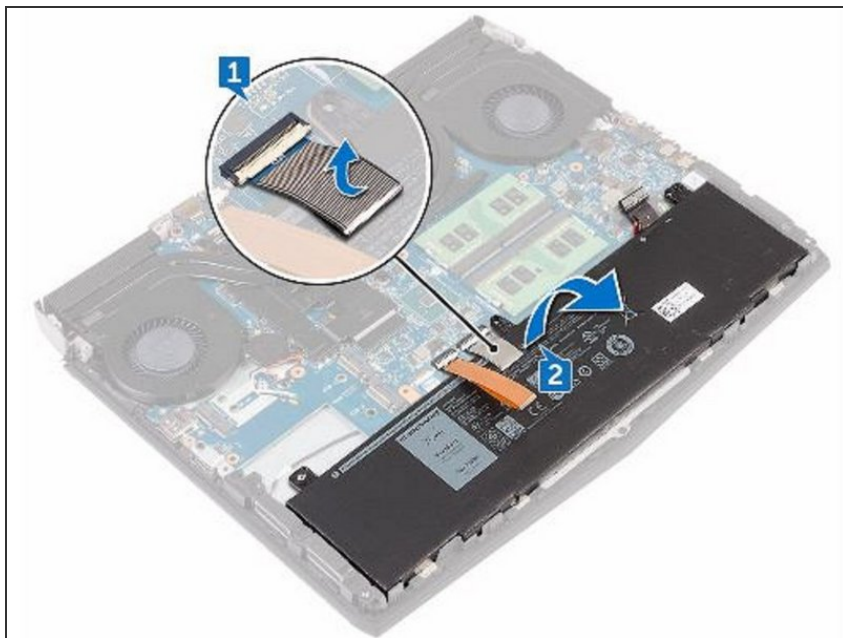
Step 34 — Peeling the Keyboard Connector



⚠ WARNING: Before working inside your computer, read the safety information that shipped with your computer and follow the steps in [Before Working Inside Your Computer](#). After working inside your computer, follow the instructions in [After Working Inside Your Computer](#).

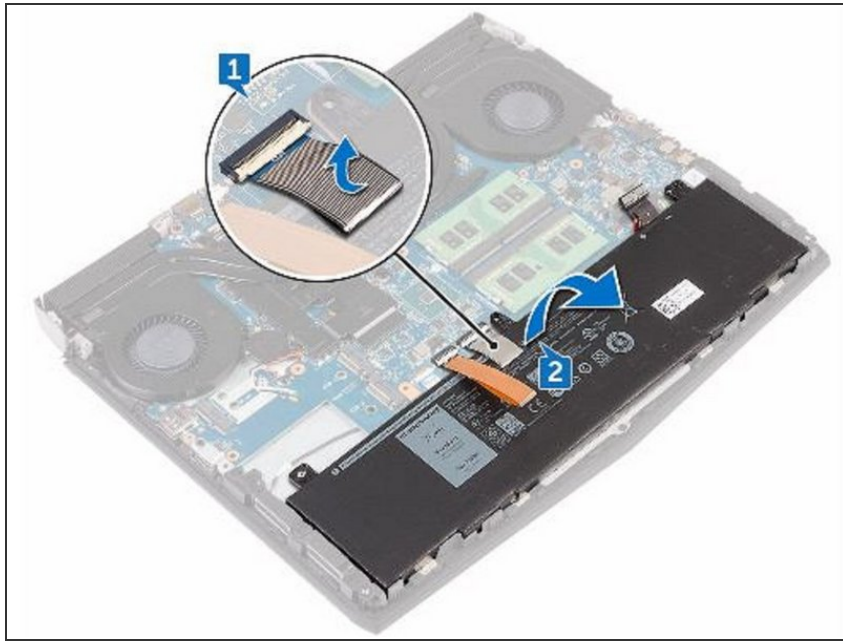
- Peel off the keyboard connector from the battery.

Step 35 — Lifting the Battery



- Lift the battery off the palm-rest assembly.

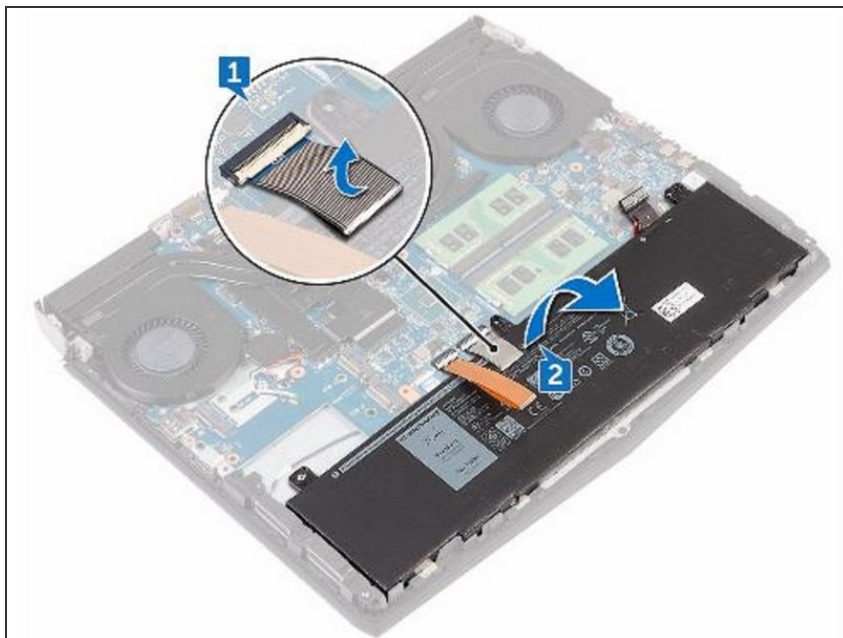
Step 36 — Placing the New Battery



CAUTION: Ensure the keyboard and keyboard-backlit cables are not under the battery.

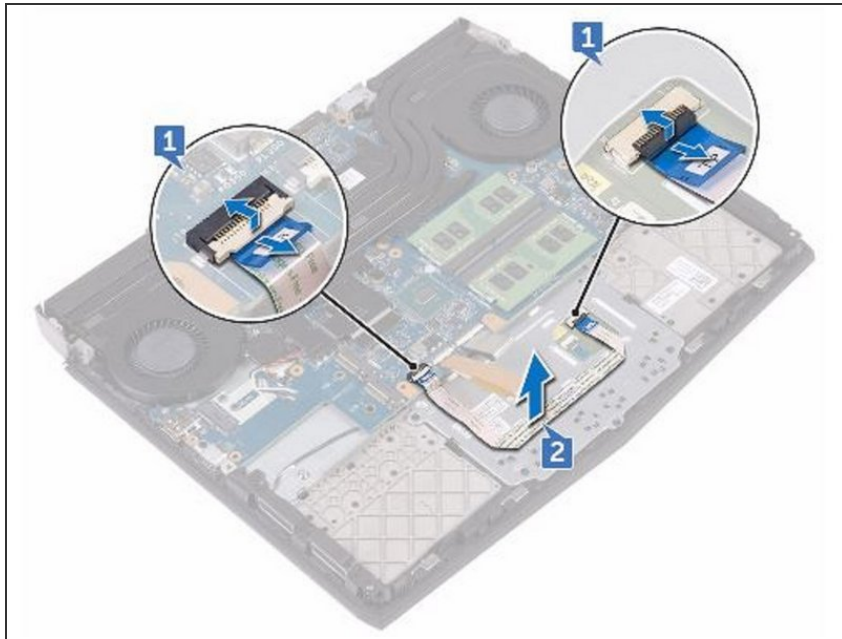
- Using the alignment post, place the **NEW** battery on the palm-rest assembly.

Step 37 — Adhering the Keyboard



- Adhere the keyboard connector that secures the battery to the palm-rest assembly.

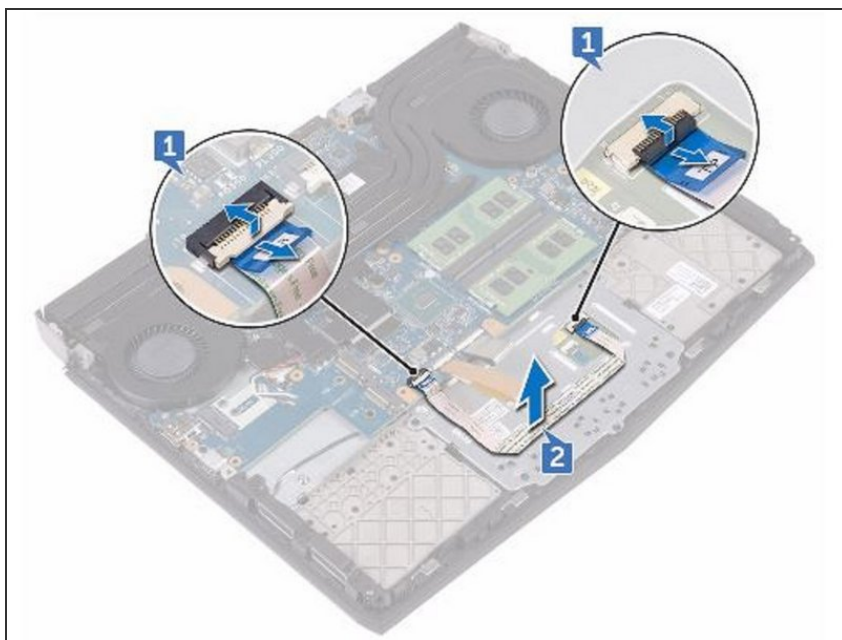
Step 38 — Open the Latches



⚠ WARNING: Before working inside your computer, read the safety information that shipped with your computer and follow the steps in [Before Working Inside Your Computer](#). After working inside your computer, follow the instructions in [After Working Inside Your Computer](#).

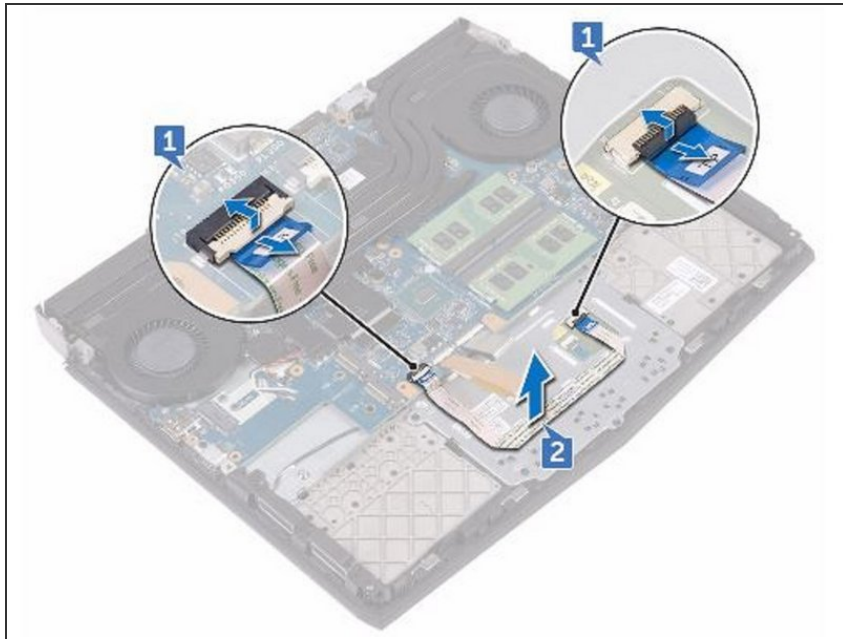
- Open the latches and disconnect the touch-pad cable from the system board and touch pad.

Step 39 — Peel off the Touch-Pad Cable



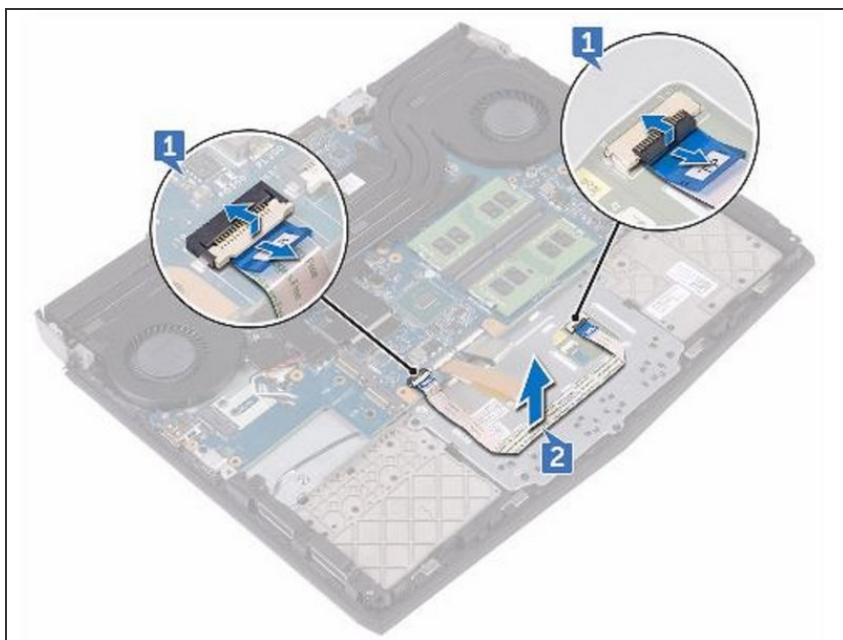
- Peel off the touch-pad cable from the touch-pad bracket.

Step 40 — Disconnect the Touch-Pad Buttons Cable



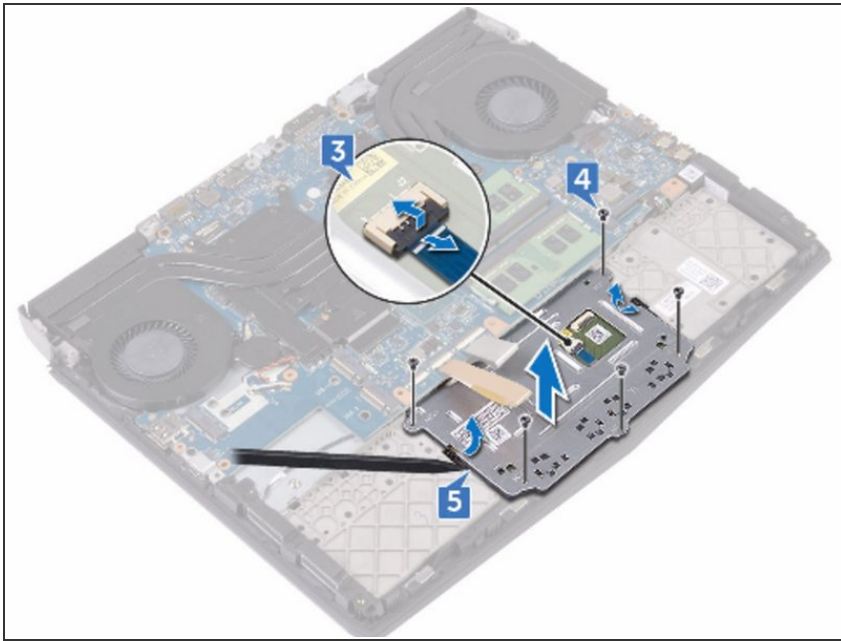
- Open the latch and disconnect the touch-pad buttons cable from the touch pad.

Step 41 — Remove the Screws



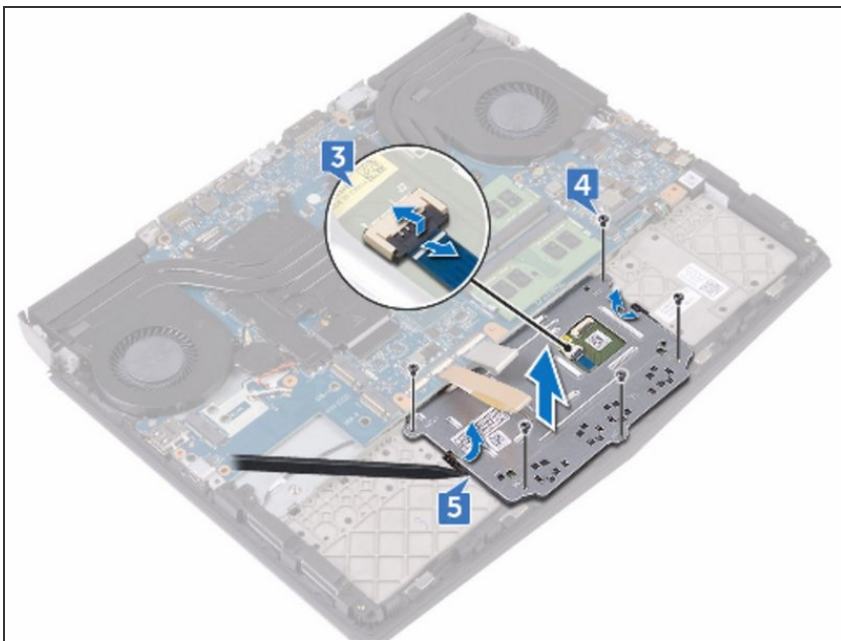
- Remove the five screws (M2x3) that secure the touch-pad bracket to the palm-rest assembly.

Step 42 — Lift the Touch-Pad Bracket



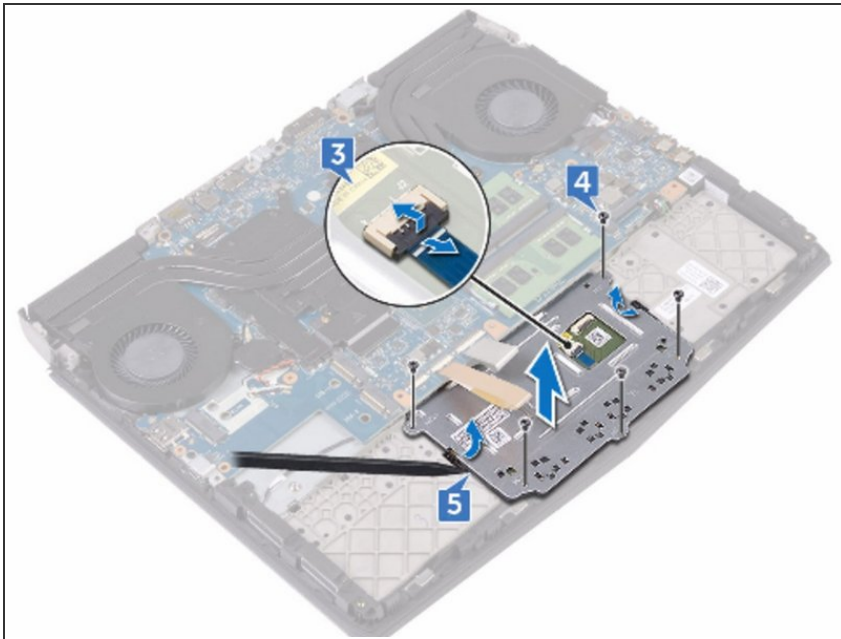
- Using a plastic scribe, lift the touch-pad bracket off the palm-rest assembly.

Step 43 — Lifting the Touch-Pad



- Lift the touch pad off the palm-rest assembly.

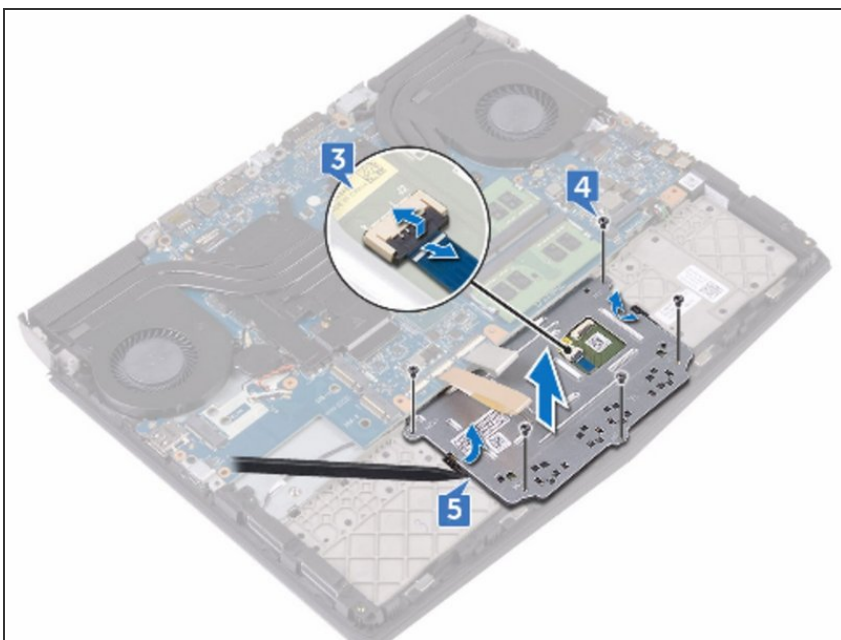
Step 44 — Placing the Touch Pad



CAUTION: Ensure the keyboard and keyboard-backlit cables are not under the touch pad.

- Using the alignment posts on the palm-rest assembly, place the **NEW** touch pad on the palm-rest assembly.

Step 45 — Align the Screw Holes



- Align the screw holes on the touch-pad bracket with the screw holes on the palm-rest assembly.

Step 46 — Replace the Screws



- Replace the five screws (M2x3) that secure the touch-pad bracket to the palm-rest assembly.

Step 47 — Securing the Cable



- Slide the touch-pad buttons cable into the respective connector on the touch pad and close the latch to secure the cable.

Step 48 — Sliding the Cables



- Slide the touch-pad cables into their respective connectors on the system board and touch pad, and close the latches to secure the cable.

To reassemble your device, follow these instructions in reverse order.