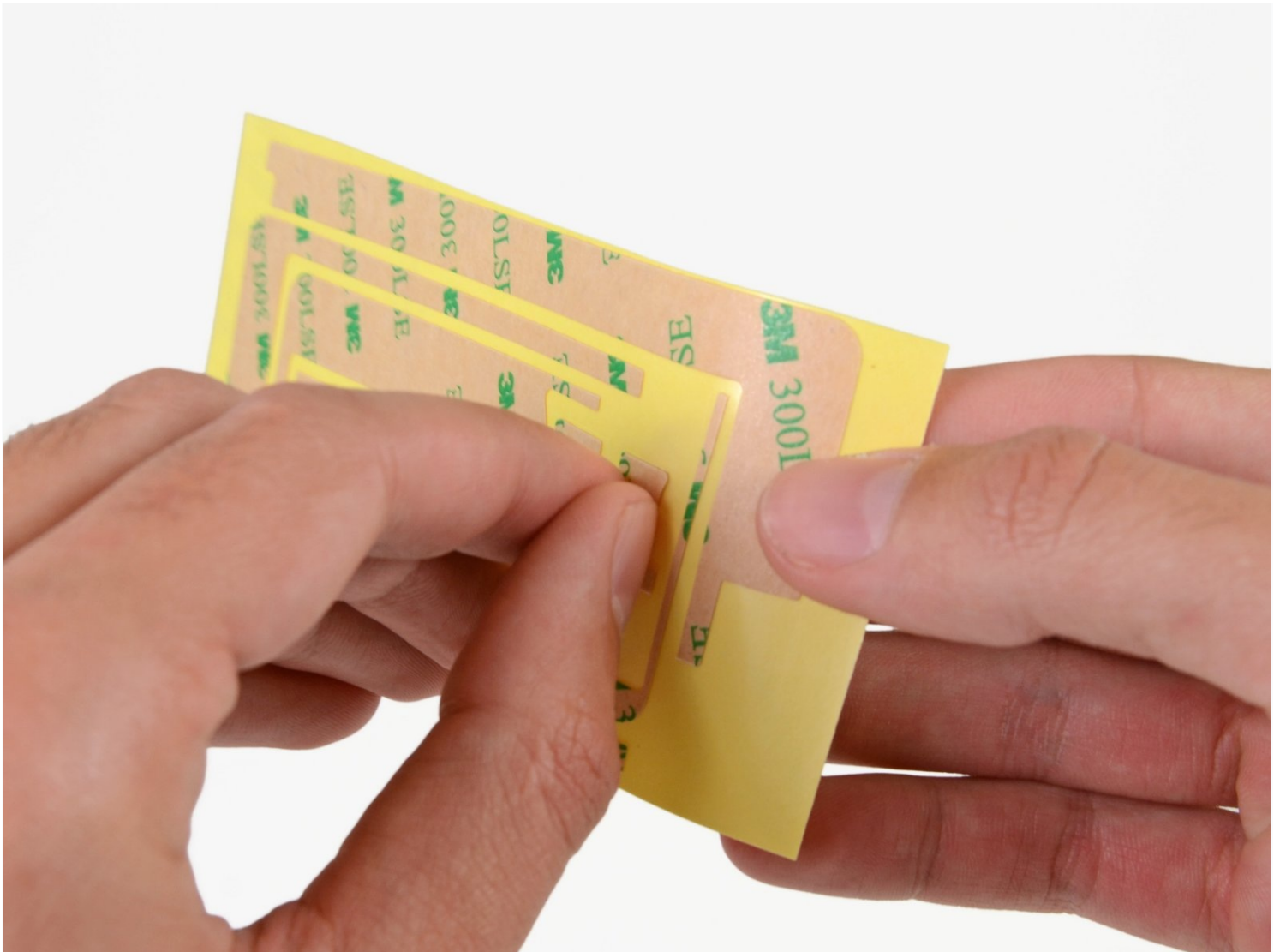




# iPad 2 Wi-Fi EMC 2415 Front Panel Adhesive Strips Replacement

Replace the adhesive securing the front panel...

Written By: Andrew Optimus Goldheart



# INTRODUCTION

Replace the adhesive securing the front panel to the rear case of your iPad 2 Wi-Fi.

Before you begin peeling and sticking tape, it's important to have clean adhesion surfaces on both the front panel and the rear case. Use a spudger to scrape off any large excess bits of original adhesive, then clean all of the gluing surfaces with a paper towel and rubbing alcohol or Goof Off.

Throughout this procedure, it is recommended to peel up each adhesive strip as needed.

---

## TOOLS:

[Tweezers](#) (1)

## PARTS:

[iPad 2 Adhesive Strips](#) (1)

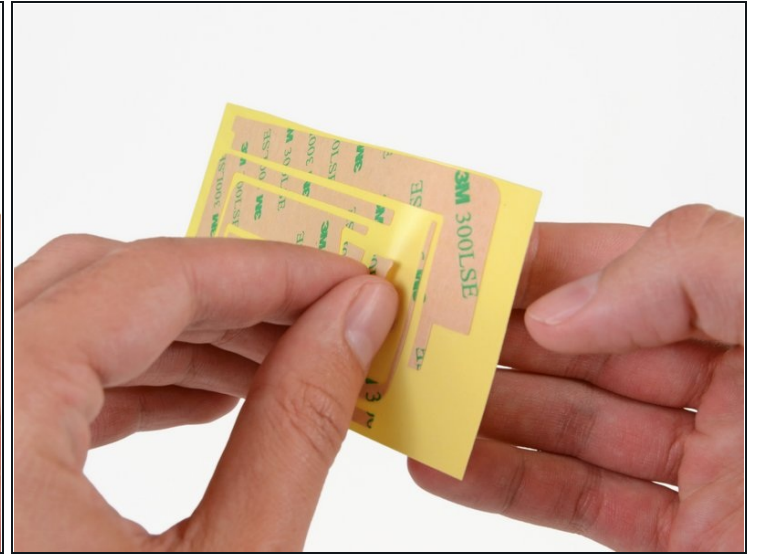
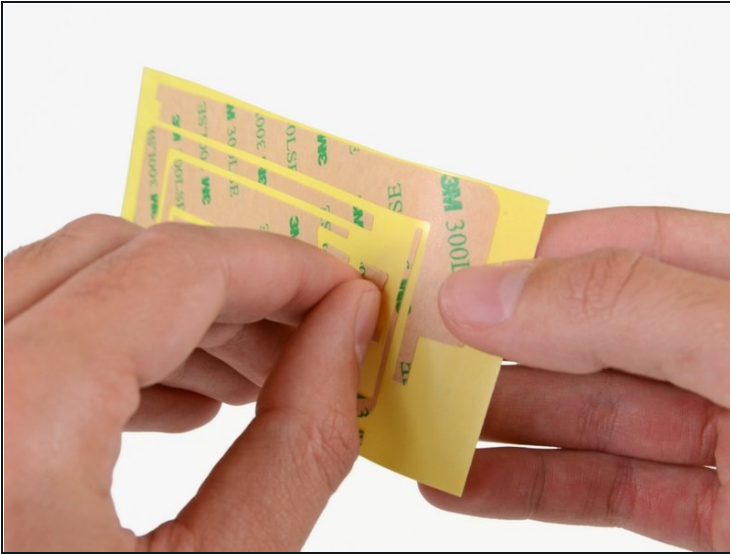
---

### Step 1 — Home Button



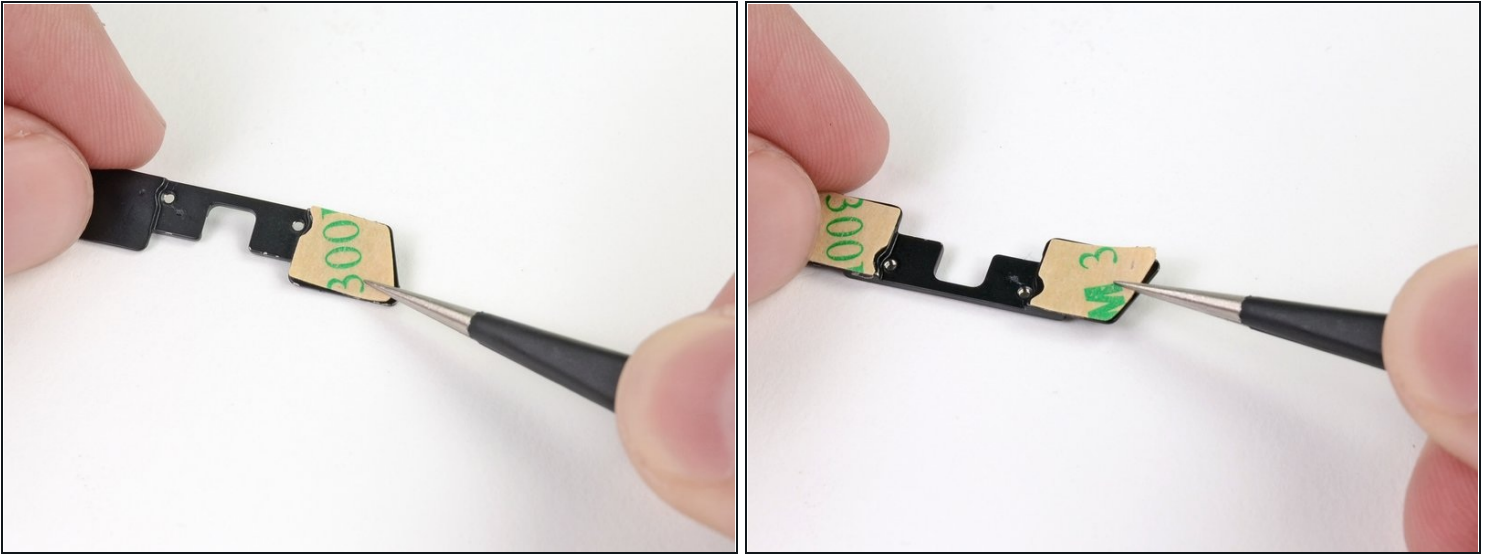
- Carefully grasp the home button with a pair of [tweezers](#).
- Gently lower and place the home button into the round opening located at the bottom of the front panel.
- ① The correct orientation of the home button is shown in the third picture. Make sure the back of the home button is face up and the flat portion of the inner home button circle is oriented to the top of the iPad.

## Step 2 — Front Panel Adhesive Strips



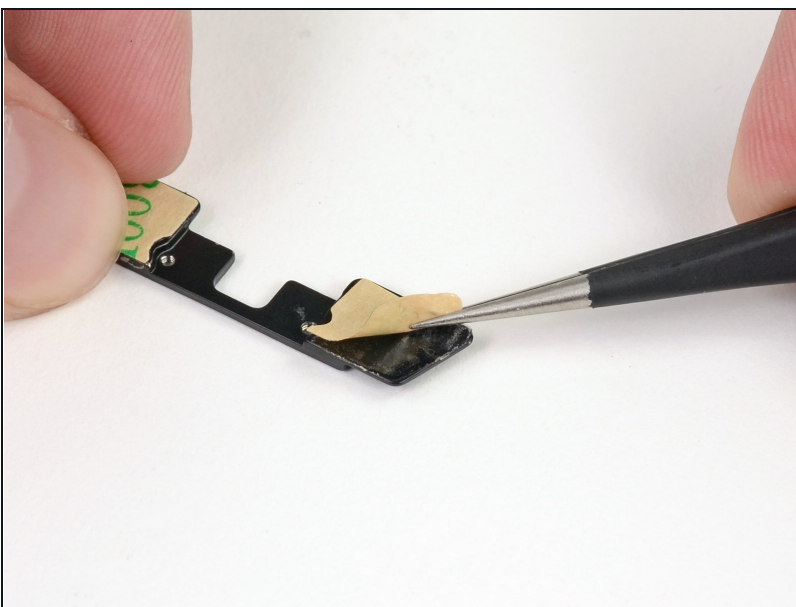
- ① The two small notched trapezoidal strips will be used to attach the home button bracket to the front panel.
- Carefully peel off the first trapezoidal adhesive strip.

### Step 3



- Using a pair of [tweezers](#), place the first trapezoidal adhesive strip (minding its correct orientation) on the matching side of the home button mounting bracket.
- ① Make sure to line up the profile of the strip with the edge of the mounting bracket.
- ★ Repeat the procedure for the second trapezoidal adhesive strip.

### Step 4



- Use a pair of tweezers to grasp the corner of one of the adhesive strips placed on the mounting bracket.
- Lift and peel the brown backing up off the adhesive strip, revealing the clear adhesive strip.
- ★ Repeat the procedure for the secondary adhesive strip.

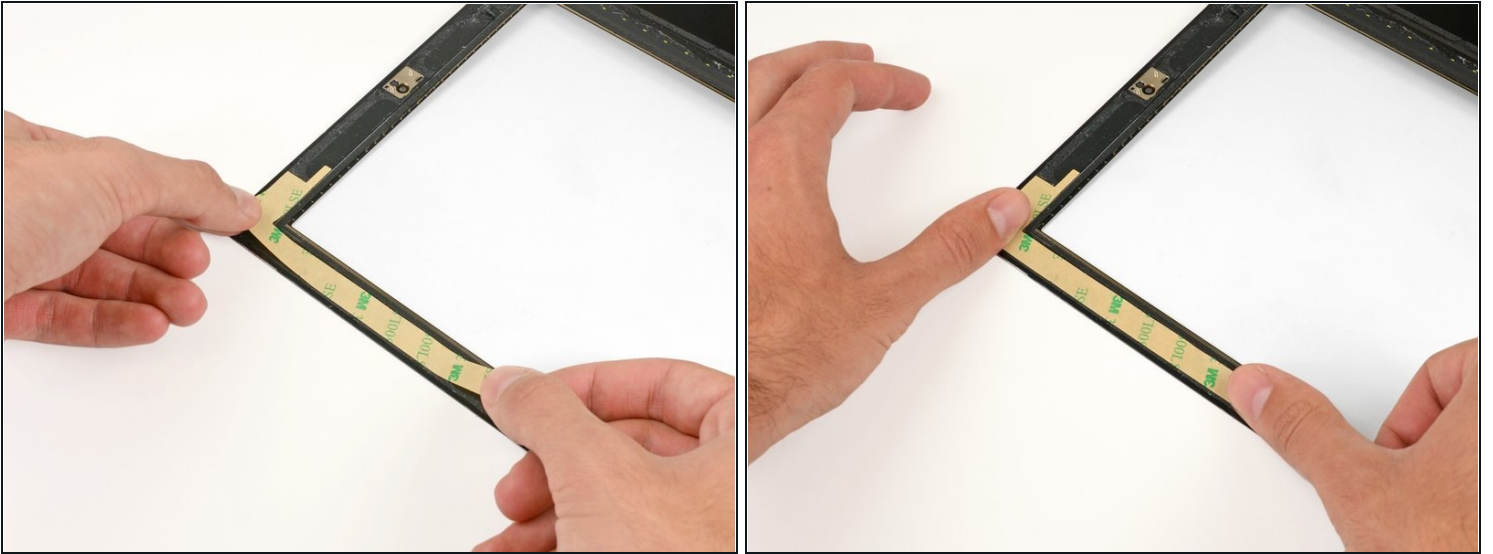
## Step 5



- Gently place the home button mounting bracket on top of the home button.
- ① Make sure the home button mounting bracket is lined up with the bottom of the digitizer.



## Step 6

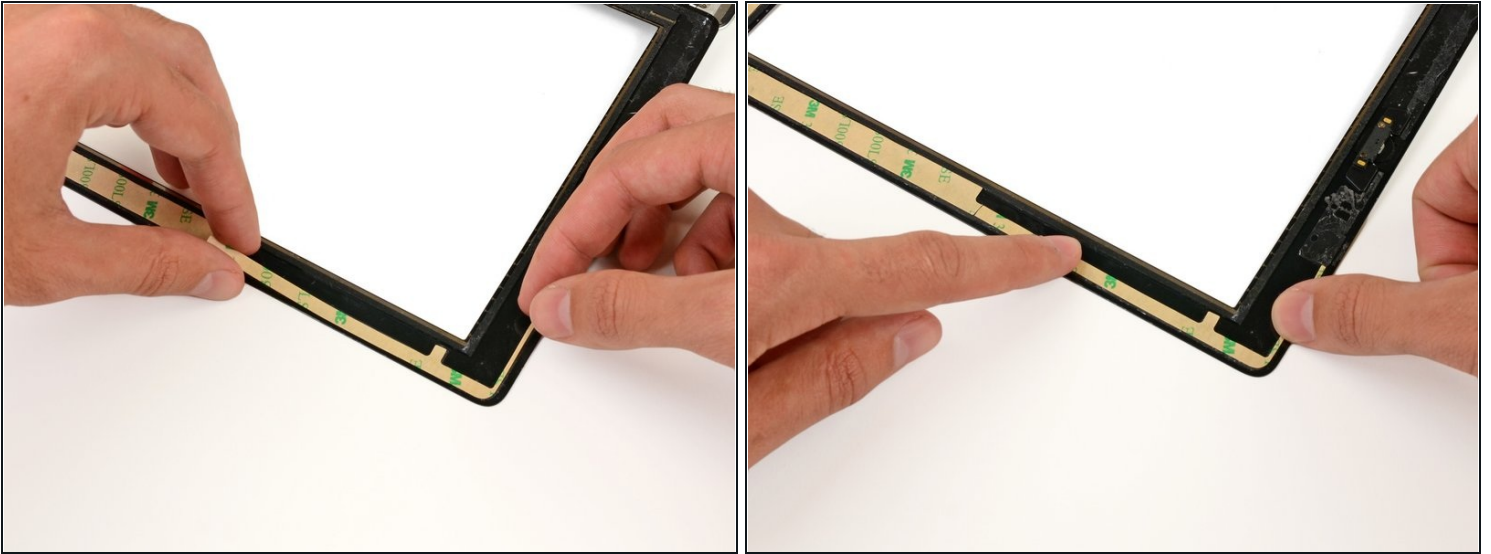


① In the following steps, you will be placing the remaining pieces of adhesive on the front panel.

☑ **Do not peel the brown backing off the strips just yet.**

- Place the largest L-shaped adhesive strip on the top left corner of the front panel.
- Smooth the strip down from the center out, taking care to not trap any air bubbles between the strip and the front panel.

## Step 7



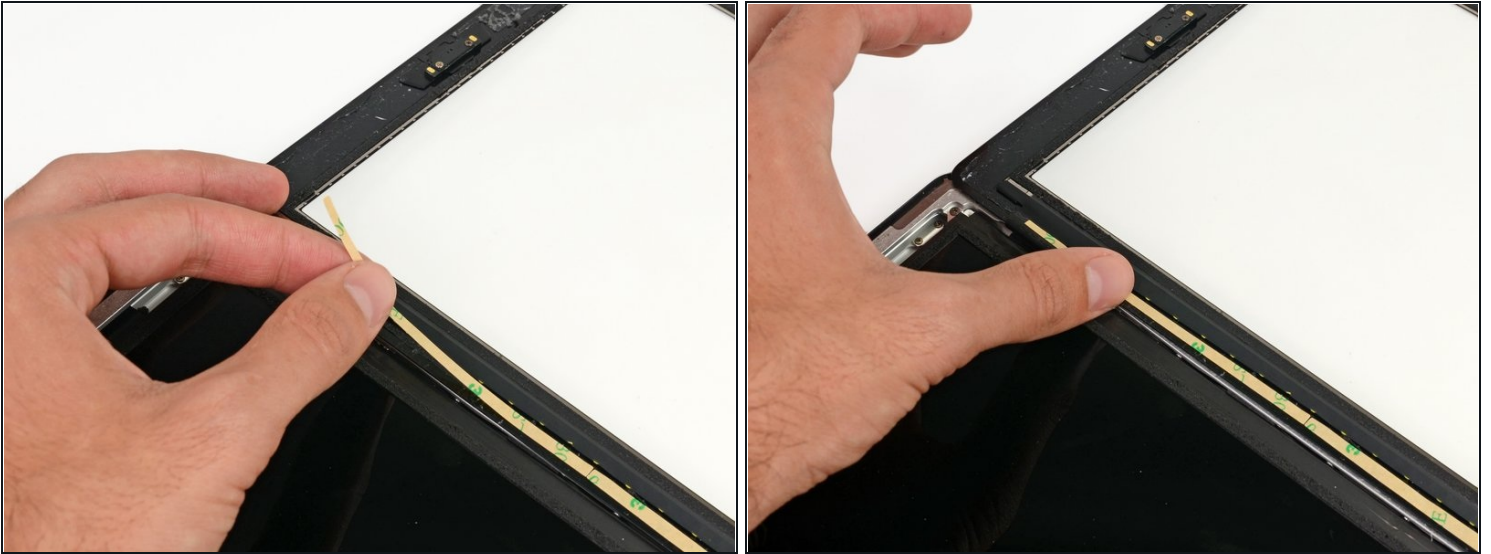
- Place the thinnest L-shaped adhesive strip on the bottom left corner of the front panel.

## Step 8



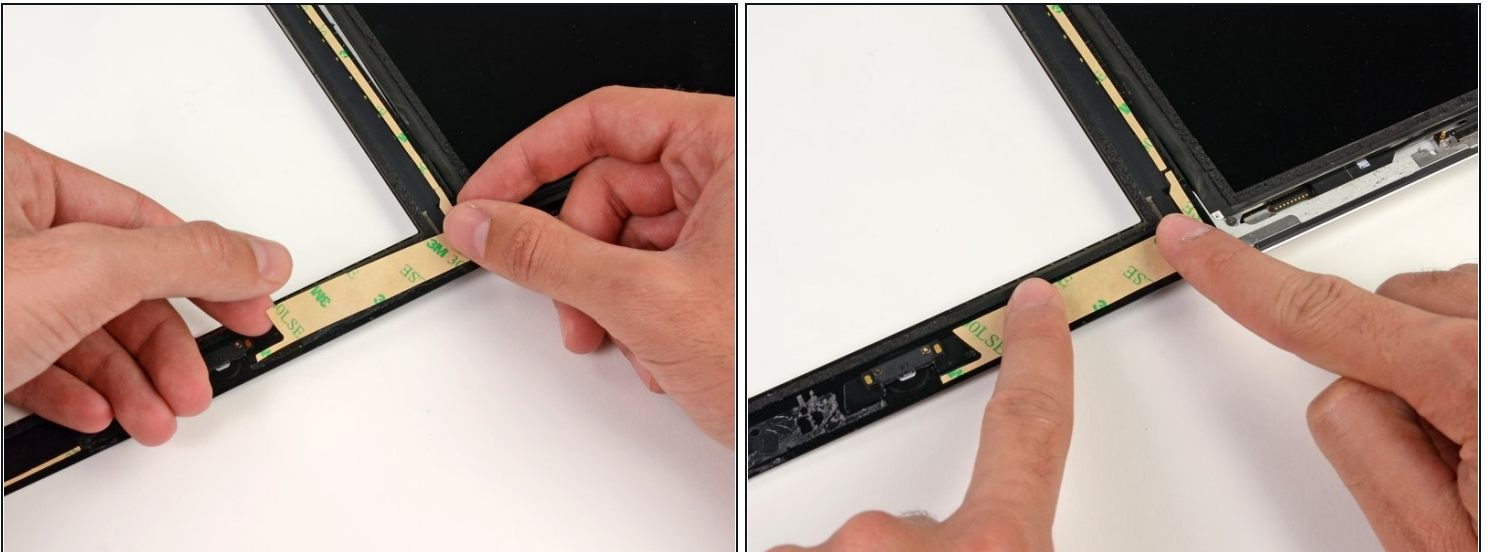
- Place the remaining thin L-shaped adhesive strip on the top right corner of the front panel, near the camera mounting bracket.

## Step 9



- Place the straight adhesive strip on the right side of the front panel.
- If you've already attached the digitizer cable, you'll have to work around/under it to attach this strip.

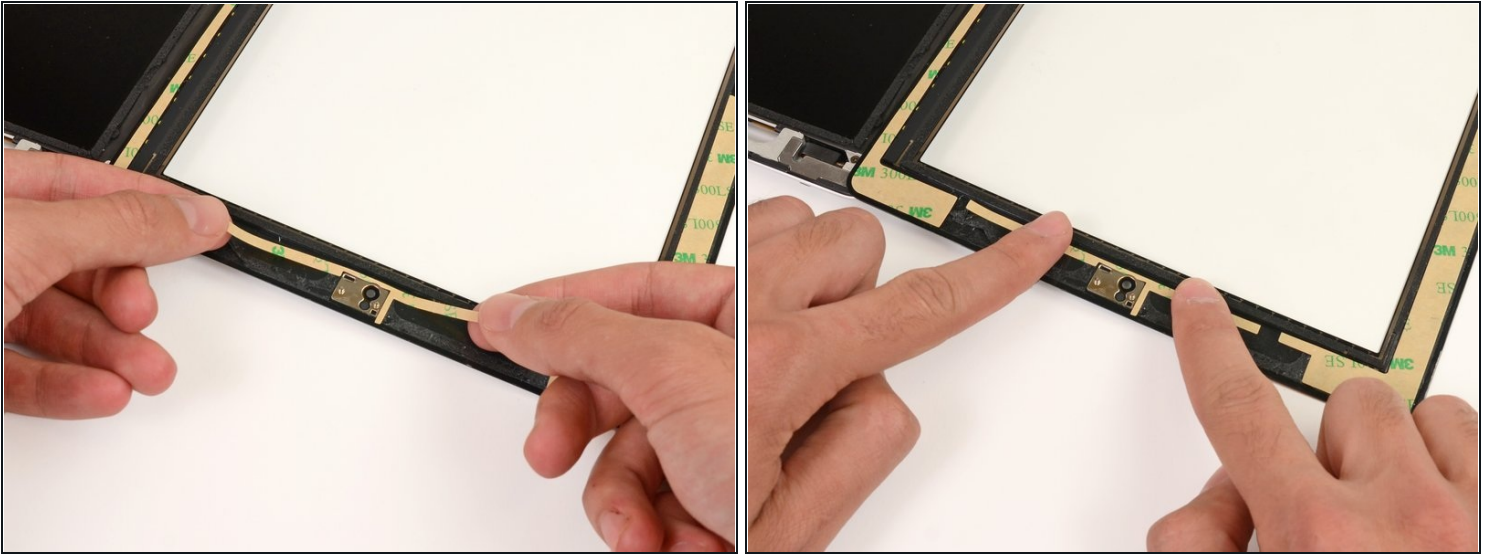
## Step 10



- Place the last L-shaped adhesive strip on the bottom right corner of the front panel.



## Step 11



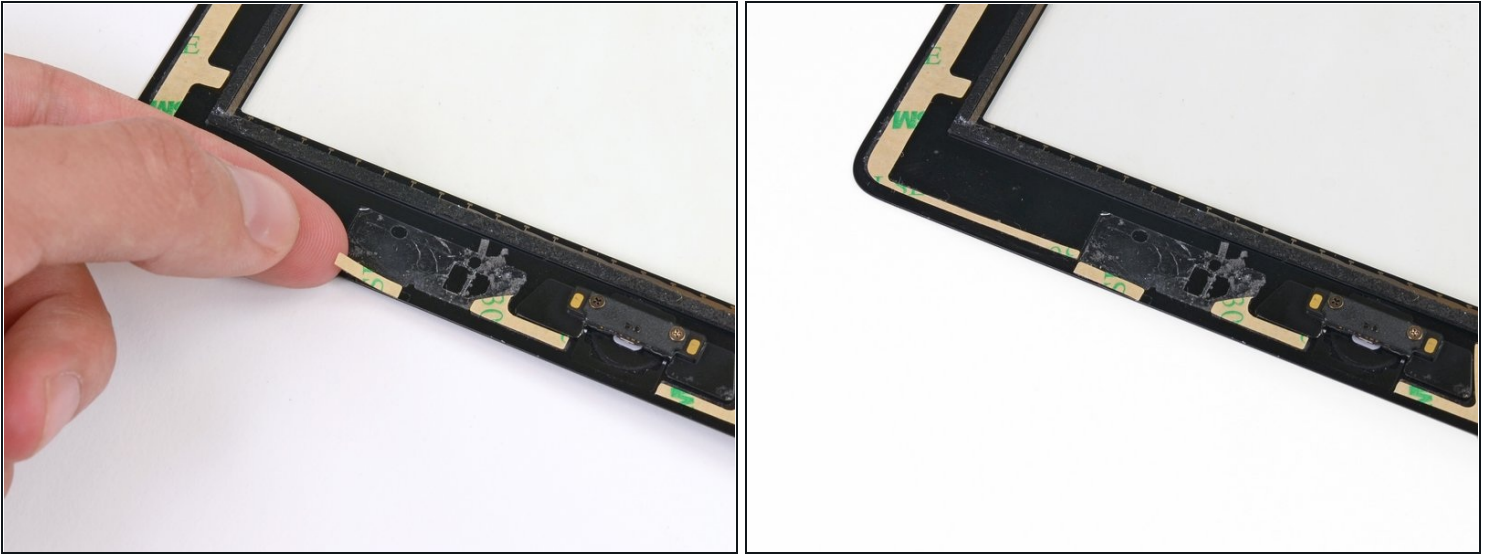
- Lay the thin T-shaped adhesive strip between the bottom edge of the inner frame of the front panel and the camera mounting bracket. The longest edge should be flush with the inner frame.

## Step 12



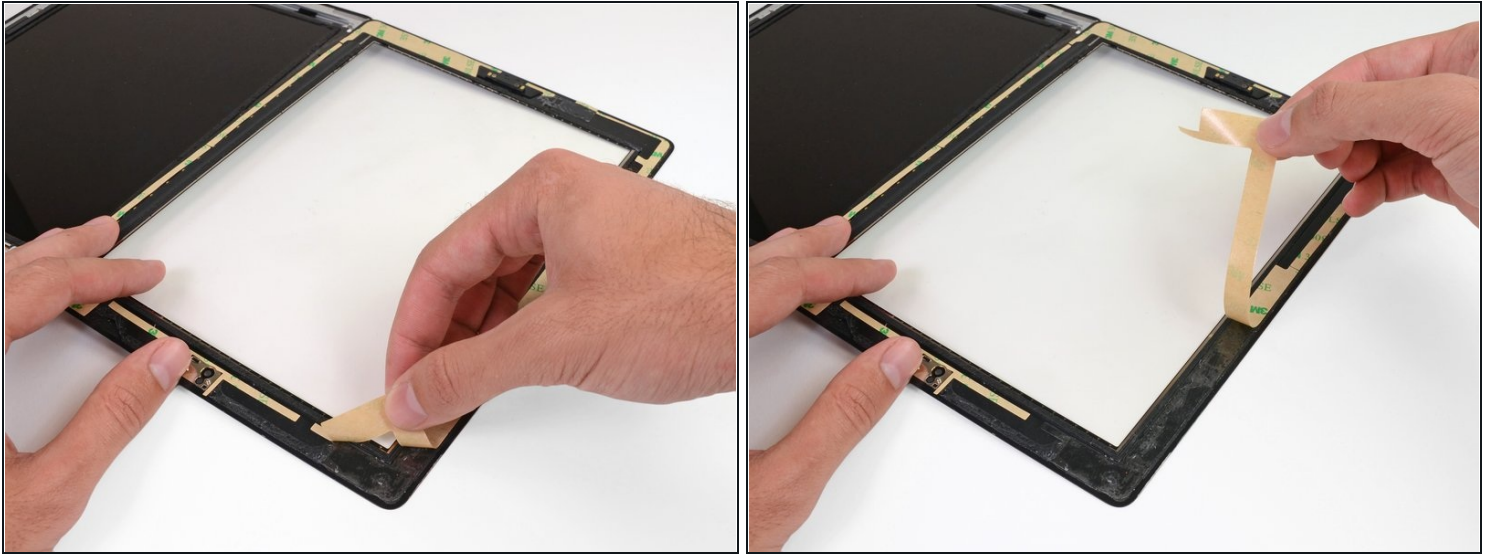
- Place the small hook-shaped adhesive strip below the left side of the home button mounting bracket.

## Step 13



- Lay the final small rectangular adhesive strip to the left of the hook-shaped adhesive strip, immediately to the right of the thin L-shaped strip, and flush with the bottom of the front panel.

## Step 14



- ① Make sure that each adhesive strip is placed in the correct location and orientation before peeling the backing.
  - Peel the brown backing up off each adhesive strip.
  - ☑ Some of the adhesive strips are quite small and may require some patience to peel the backing.
-