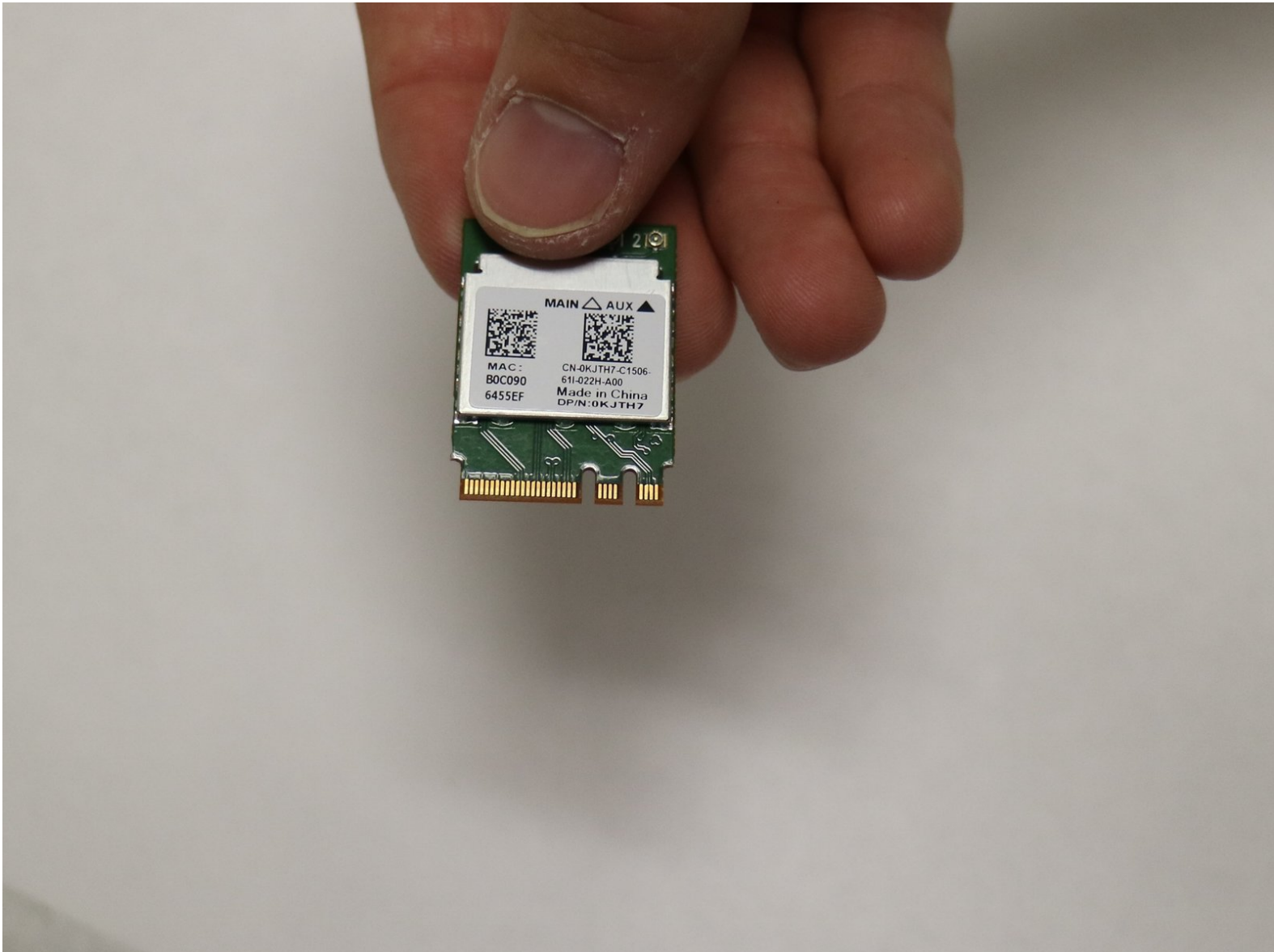




# Dell Inspiron 14-3452 Wireless Card Replacement

Replace your broken WiFi card to fix network connection issues.

Written By: Alec Siegel



## INTRODUCTION

The reason your laptop is not connecting to the internet properly may be due to a worn-out or broken wireless card. This guide will show how to replace an old WiFi card with a new one.



### TOOLS:

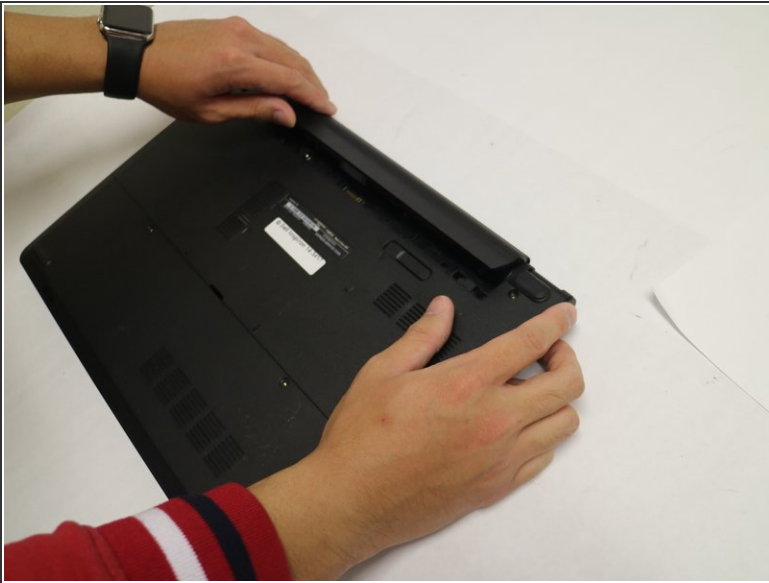
- [Phillips #0 Screwdriver](#) (1)



### PARTS:

- [Inspiron 14-3452 Wireless Card](#) (1)

## Step 1 — Battery



- Remove the battery by sliding the battery release latch to the left.
- Pull the entire battery away from the backing.

## Step 2 — Wireless Card



- Remove two Phillips Head 5 mm #0 screws holding the backing in place.

## Step 3



- Pull the backing away from the laptop.

## Step 4



- Remove the white and black antenna cables from the wireless card.



## Step 5



- Remove the Phillips Head 3 mm #0 screw that is holding the wireless card in place.

## Step 6



- Slide the wireless card out of the wireless card bay.

To reassemble your device, follow these instructions in reverse order.