



Dell Inspiron 14-3452 Screen Replacement

Replace your broken screen to fix display issues on your laptop.

Written By: Alec Siegel



INTRODUCTION

Is the screen of your Inspiron 14-3452 broken? All you need is a spudger and a screwdriver in order to open up your laptop and replace its screen.



TOOLS:

- [Phillips #0 Screwdriver](#) (1)
- [Philips Head Screwdriver: Size J1](#) (1)
- [Spudger](#) (1)



PARTS:

- [Dell Inspiron 14-3452 Screen](#) (1)



- ## Step 2 — Random Access Memory (RAM)



- Page 3 of 11

Step 3



- Pull the backing away from the laptop.

Step 4



- Locate the blue RAM chip sitting in the RAM bay.
- Use your fingertips to pry apart the white RAM securing-clips on each side of the memory-module slot until the RAM chip pops up.

Step 5



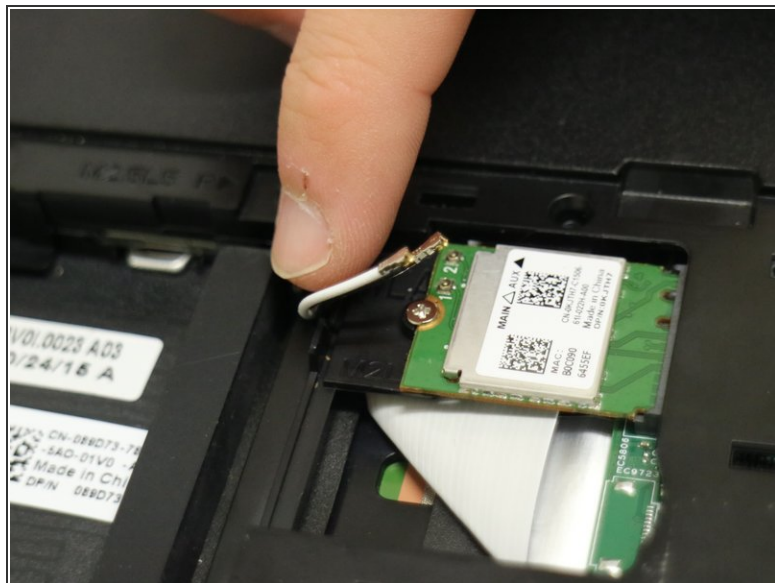
- Pull the RAM chip away from the memory-module slot.
- The RAM chip is now fully detached and ready to be replaced.

Step 6 — Screen



- Remove the ten Phillips Head 5 mm #0 screws from the computer backing.
- Remove the one Phillips Head 3 mm #0 screw from the computer backing.

Step 7



- Remove the white and black antenna cables from the wireless card.

Step 8



- Remove the Phillips Head 3 mm #0 screw that is holding the wireless card in place.

Step 9



- Slide the wireless card out of the wireless card bay.

Step 10



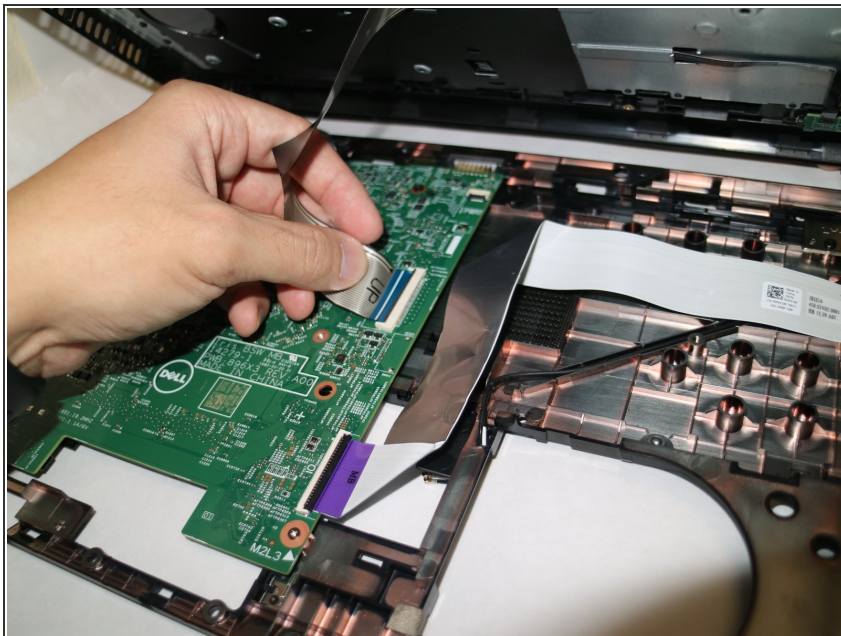
- Using your fingertips remove the speaker cable from the motherboard by pulling the white connector away from the socket.

Step 11



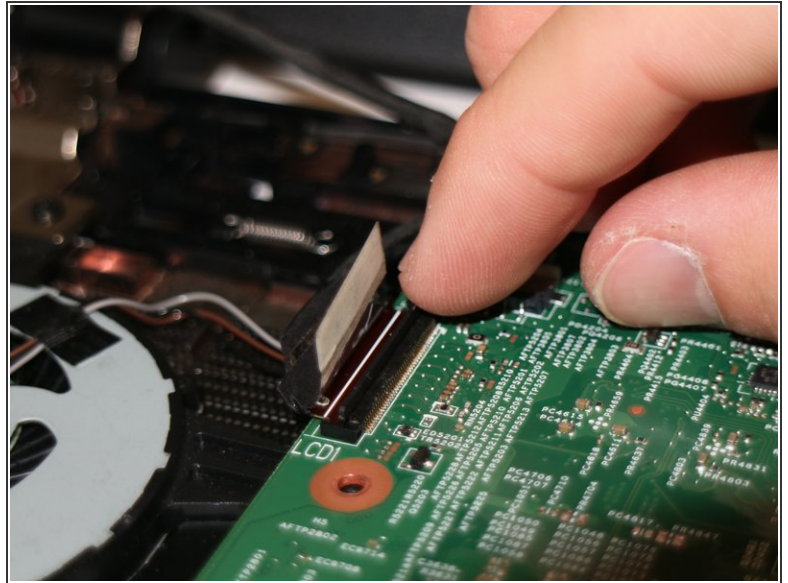
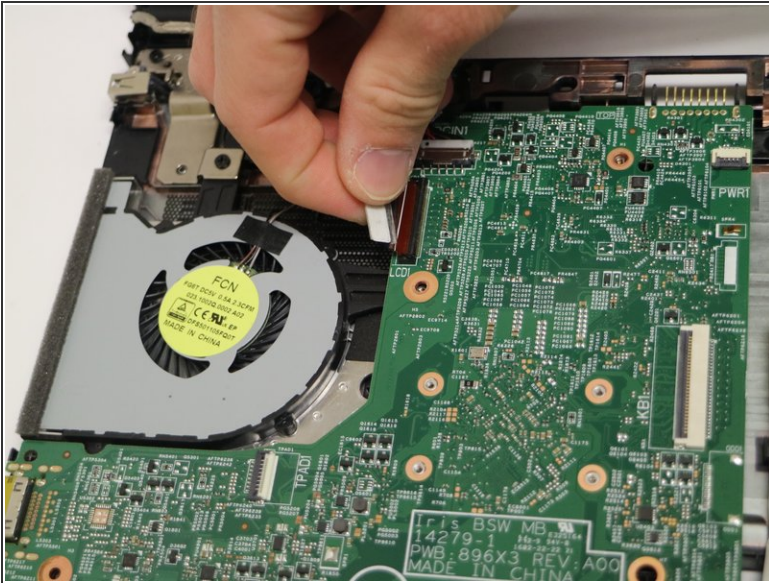
- ⚠️ Pry apart the keyboard assembly slowly as the keyboard cable will still be attached to the motherboard.
- Use the blue Uspudger to pry apart the keyboard assembly from the bottom shell.

Step 12



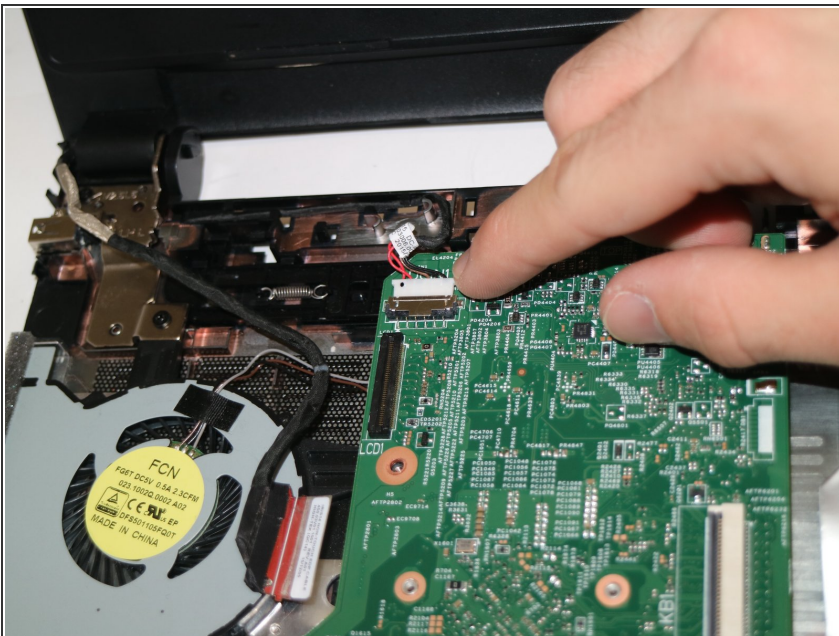
- Disconnect the keyboard cable from the motherboard by lifting the black latch and pulling the cable out of its socket.

Step 13



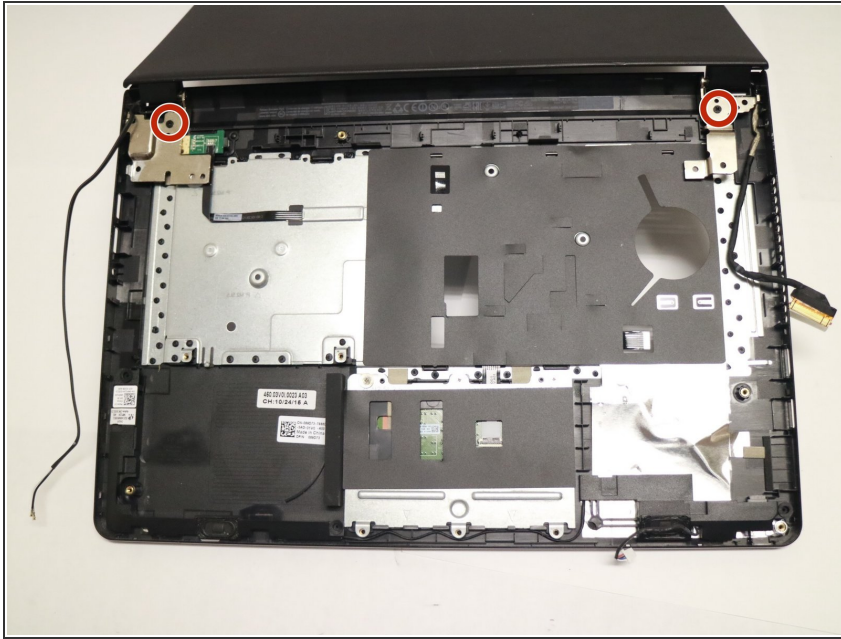
- Disconnect the display cable from the motherboard by pulling the tape back and lifting the connector latch.
- Pull the display cable away from the motherboard.

Step 14



- Remove the power adapter cable from the motherboard by sliding the cable out of its socket.

Step 15



- Turn laptop over to access the screen hinge screws.
- Remove the two Phillips Head 5 mm #0 screws from the two hinges.

Step 16



- Using your fingertips, gently pry up the inner edges of the display bezel.
- Lift the display bezel off the display assembly.

Step 17



- After removing the bezel, locate the tab indicated in the pictures.
- Lift the tab as shown in the pictures.
- Lift the gold latch securing the display cable to the socket.
- Pull display cable away from the socket.

To reassemble your device, follow these instructions in reverse order.