



Toshiba Satellite E45DW-C4210 Battery Replacement

This guide will show how to replace the battery in the Toshiba e45dw-c4210.

Written By: Alyssa Schumacher



INTRODUCTION

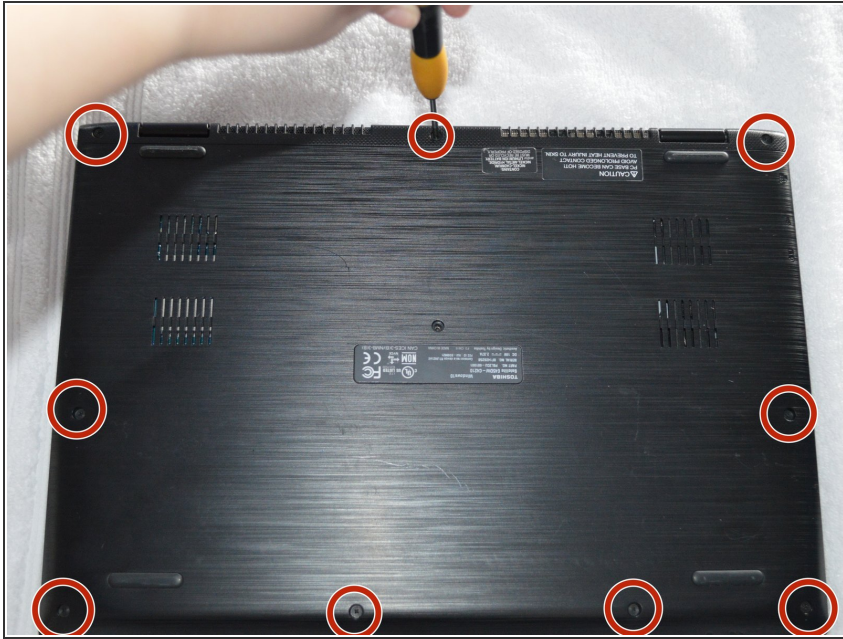
This guide will show users how to replace the battery in the Toshiba Satellite E45DW-C4210. It takes you step by step through the process of disassembling the laptop and reassembling it. You will need to unscrew the back then remove the back from the rest of the computer. You will also need to unscrew the battery, unplug the battery, and remove the battery. Then you will need to follow the steps in reverse order to reassemble the laptop.



TOOLS:

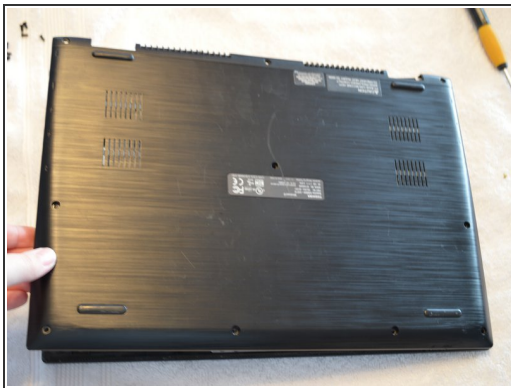
- [Phillips #0 Screwdriver](#) (1)
-

Step 1 — Battery



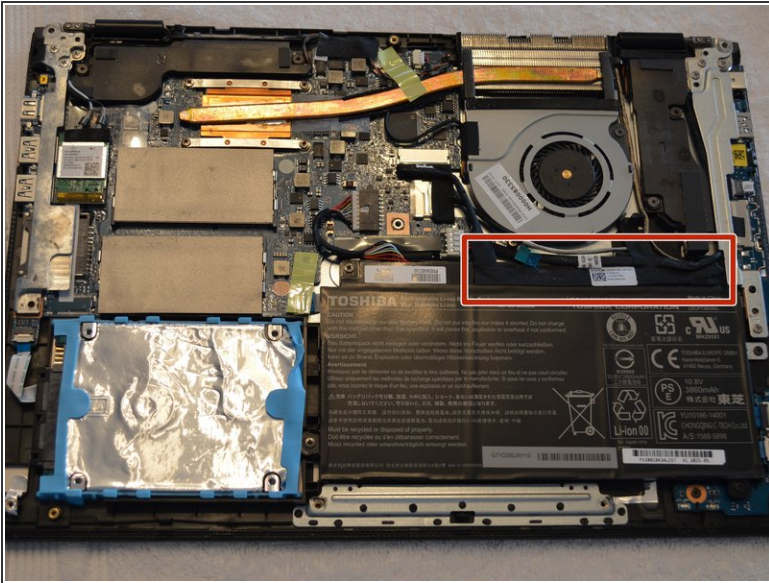
- Using a Phillips #0 screwdriver, remove all nine of the screws along the outside of the bottom of the laptop.

Step 2



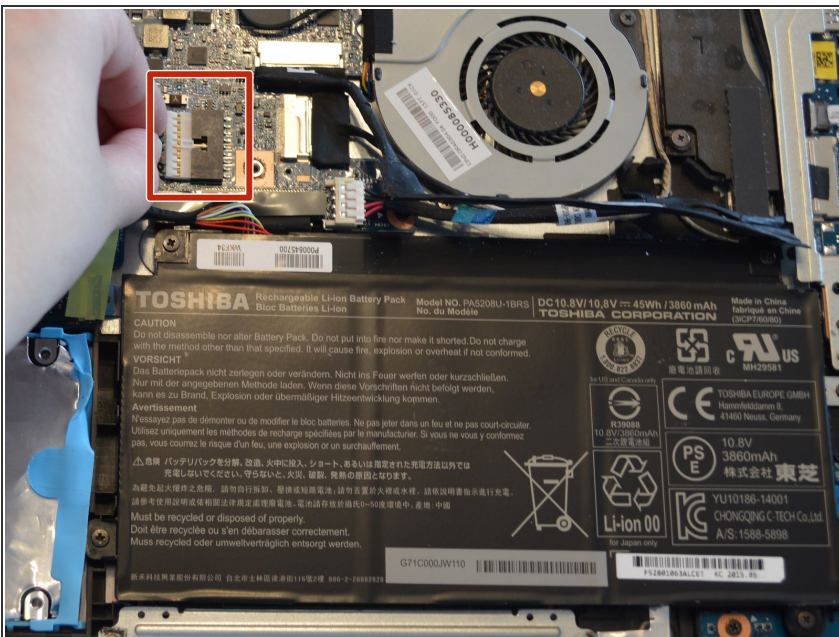
- Using your fingers, gently loosen the outside edge of the laptop.
- Unsnap the bottom of the case from the computer by pulling each side apart in the middle of the computer.

Step 3



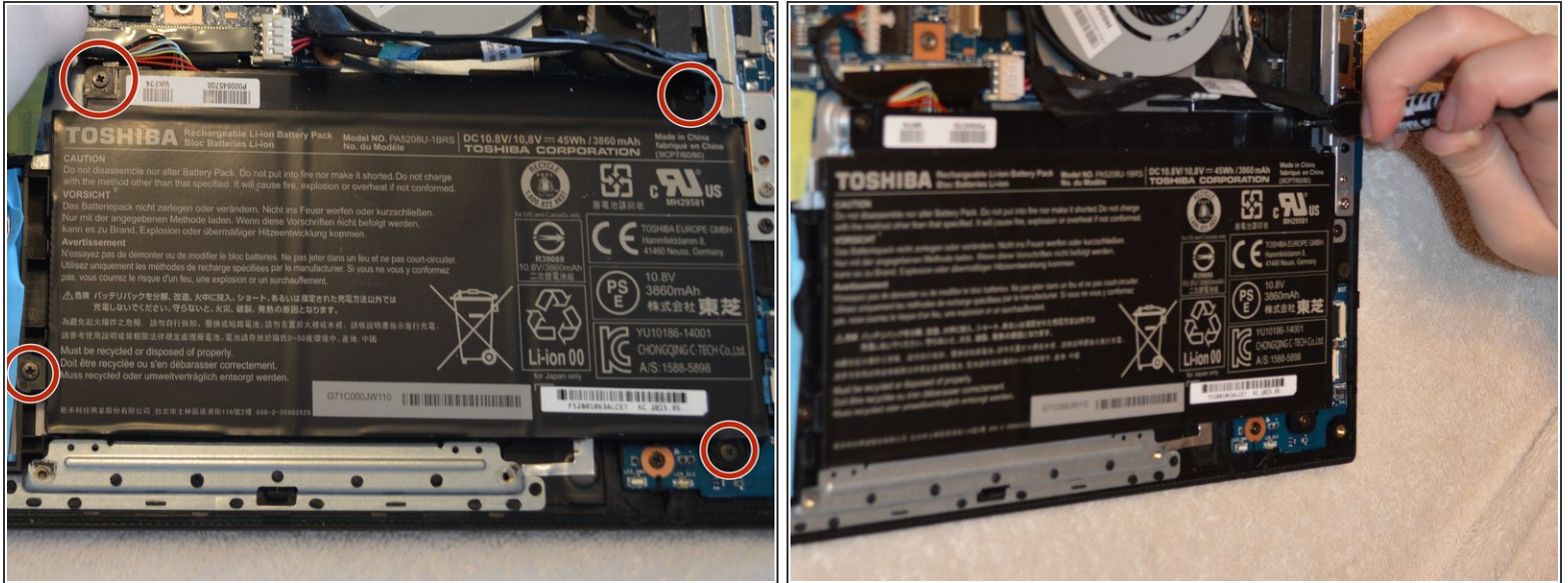
- Pull up the black strip of tape.

Step 4



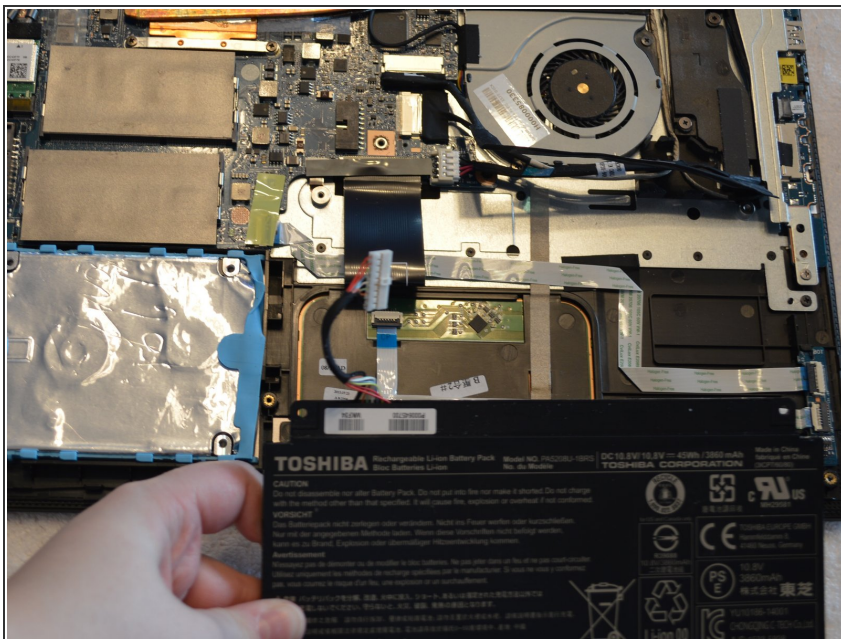
- Using your pointer finger and thumb grab the cords where they connect to the plug.
- Gently pull the battery attachment from the laptop.

Step 5



- Using the Phillips #0 screwdriver, unscrew each of the four screws holding the battery in place.

Step 6



- Lift and remove the battery from the device.

To reassemble your device, follow these instructions in reverse order.