



Dell Inspiron 14-3452 Motherboard Replacement

Replace your worn-out motherboard to enhance performance of your laptop.

Written By: Meg Allison



INTRODUCTION

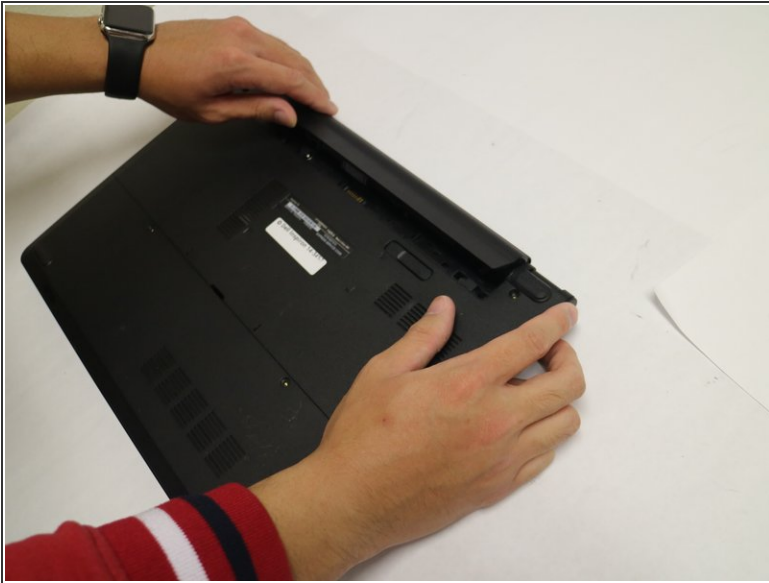
The motherboard functions as a central part of the laptop. Replacing the motherboard with a new one is an involved process, so we will walk you through each step of the process. All the tools needed is a screwdriver and a plastic spudger. Tweezers are optional.



TOOLS:

- [Phillips #0 Screwdriver](#) (1)
 - [Spudger](#) (1)
-

Step 1 — Battery



- Remove the battery by sliding the battery release latch to the left.
- Pull the entire battery away from the backing.

Step 2 — Random Access Memory (RAM)



- ⚠ Ensure that the laptop is completely turned off and the battery is removed.
- Remove the two Phillips Head 5 mm #0 screws holding the backing in place.

Step 3



- Pull the backing away from the laptop.

Step 4



- Locate the blue RAM chip sitting in the RAM bay.
- Use your fingertips to pry apart the white RAM securing-clips on each side of the memory-module slot until the RAM chip pops up.

Step 5



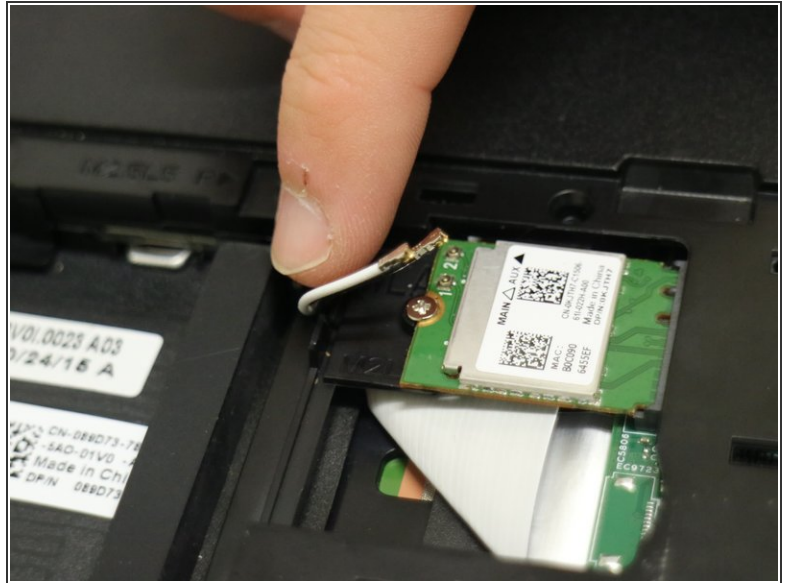
- Pull the RAM chip away from the memory-module slot.
- The RAM chip is now fully detached and ready to be replaced.

Step 6 — Motherboard



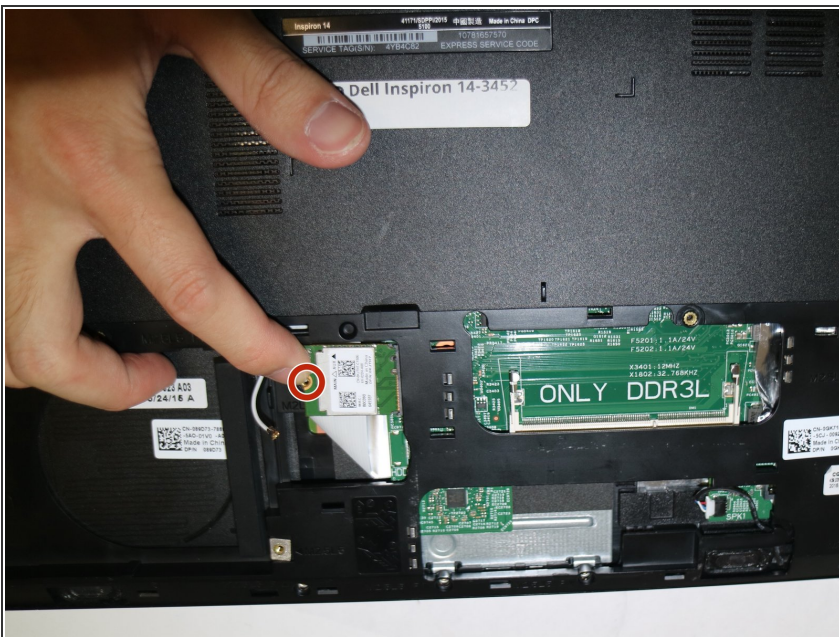
- Remove the ten Phillips Head 5 mm #0 screws from the computer backing.
- Remove the one Phillips Head 3 mm #0 screw from the computer backing.

Step 7



- Remove the white and black antenna cables from the wireless card.

Step 8



- Remove the Phillips Head 3 mm #0 screw that is holding the wireless card in place.

Step 9



- Slide the wireless card out of the wireless card bay.

Step 10



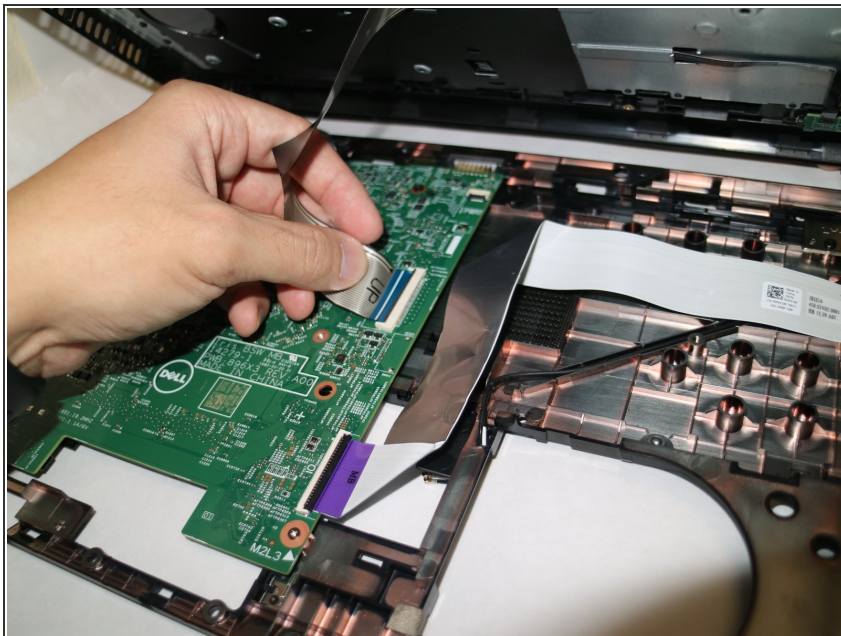
- Using your fingertips remove the speaker cable from the motherboard by pulling the white connector away from the socket.

Step 11



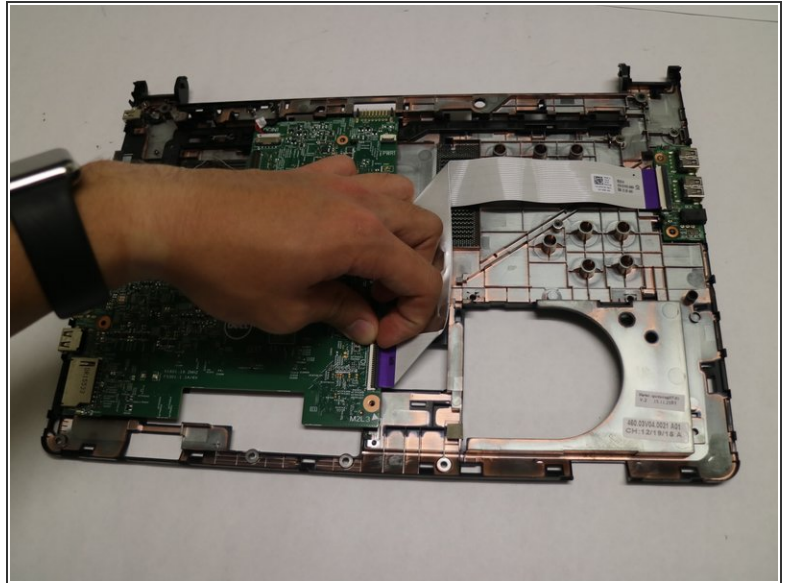
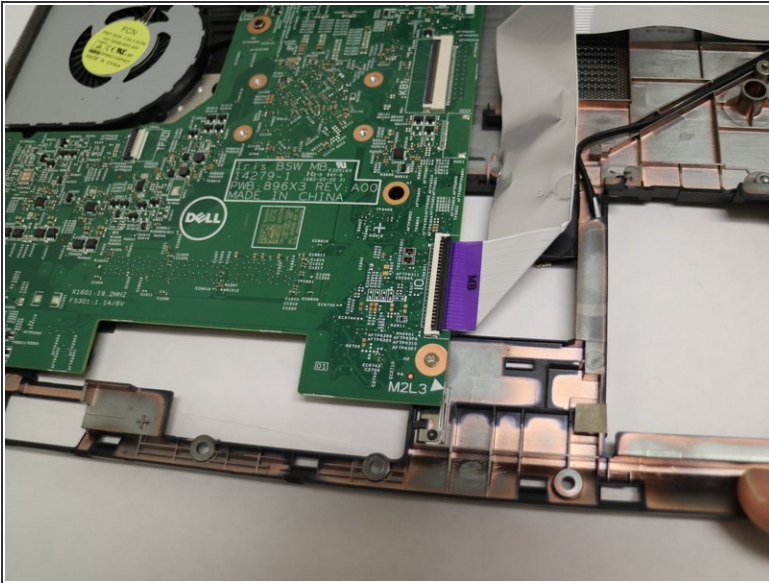
- ⚠️ Pry apart keyboard assembly slowly as keyboard cable will still be attached to the motherboard.
- Use the blue spudger to pry apart the keyboard assembly from the bottom shell.

Step 12



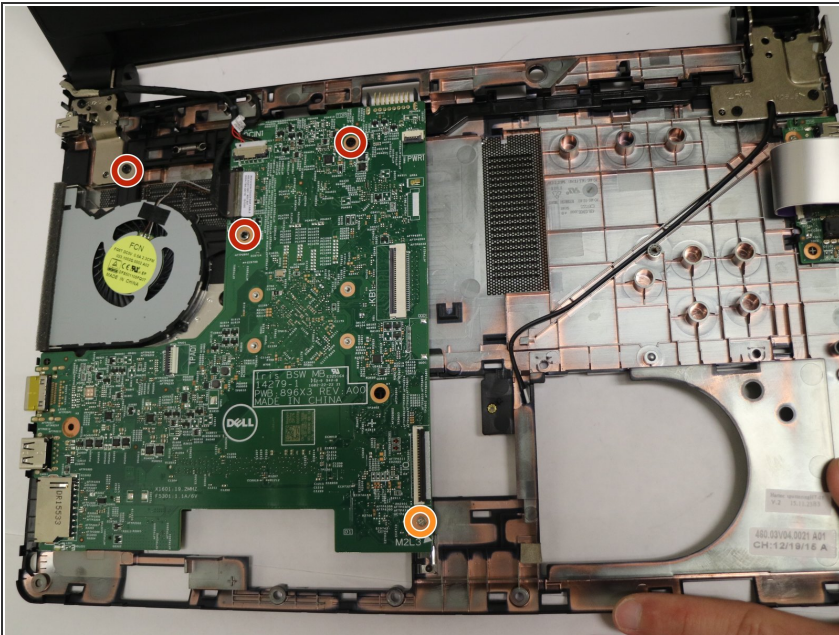
- Disconnect the keyboard cable from the motherboard by lifting the black latch and pulling the cable out of its socket.

Step 13



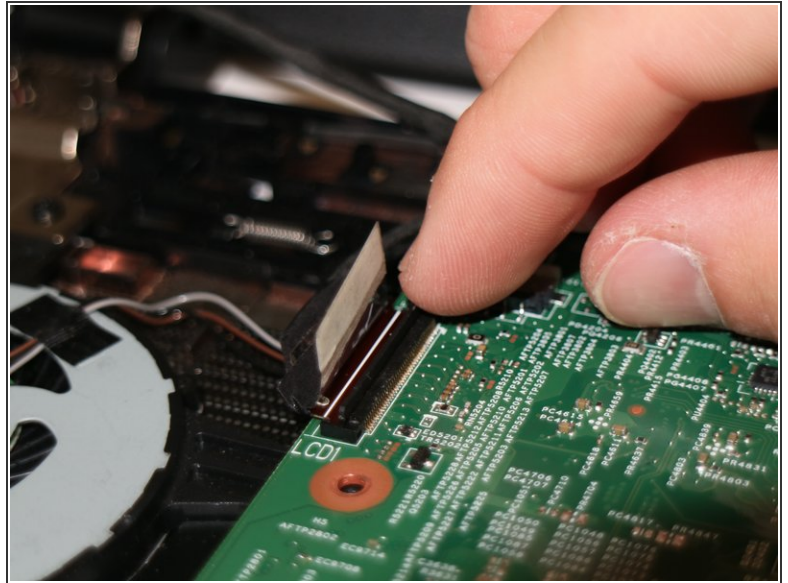
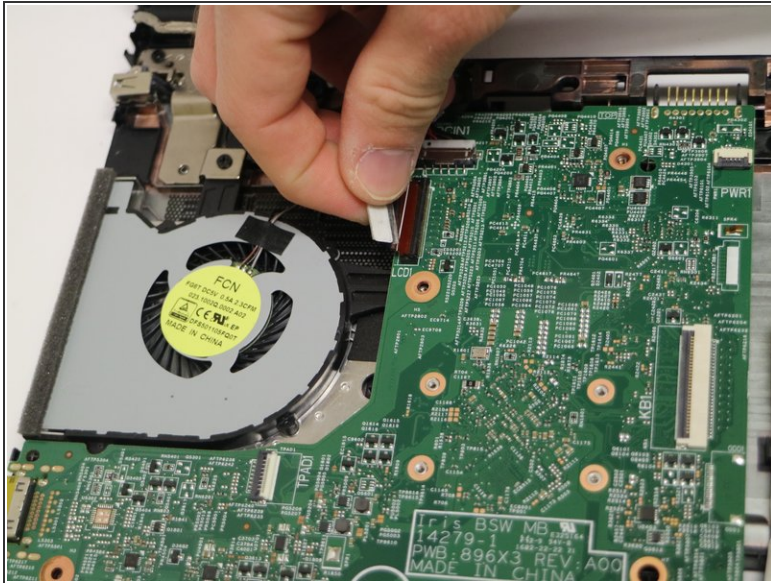
- Remove the I/O board cable from the motherboard by lifting the black latch and pulling the cable out of its socket.

Step 14



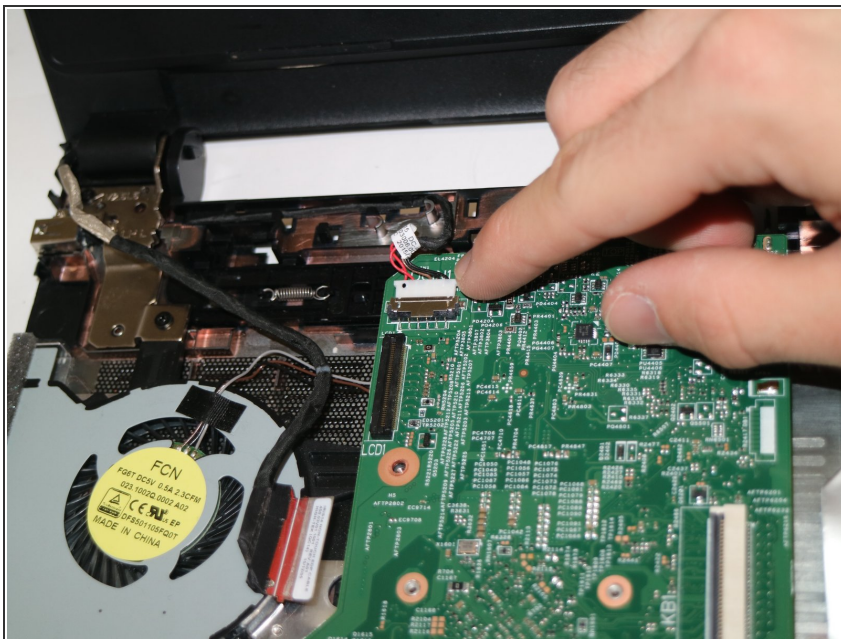
- Remove the three Phillips Head 5 mm #0 screws.
- Remove the one Phillips Head 3 mm #0 screw.

Step 15



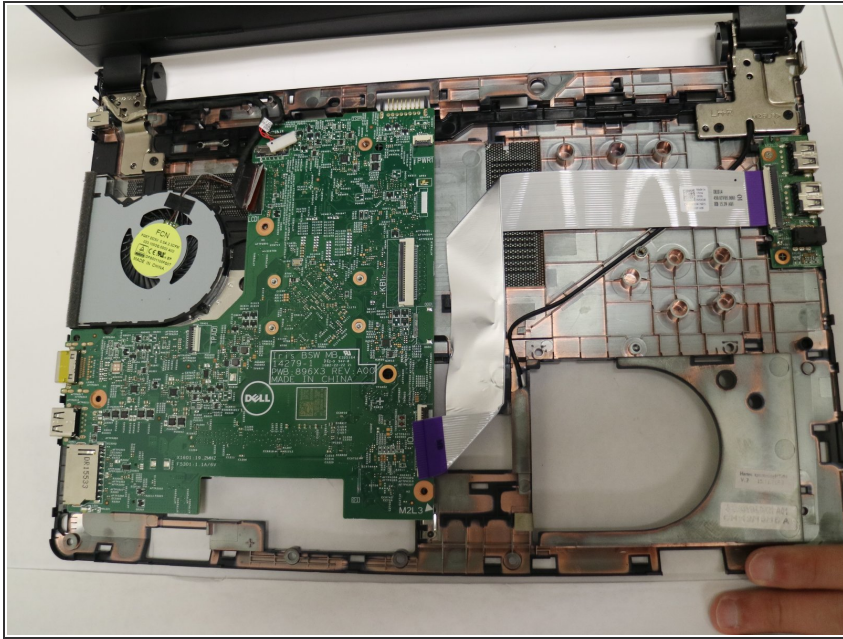
- Disconnect the display cable from the motherboard by pulling tape back and lifting connector latch.
- Pull the display cable away from the motherboard.

Step 16



- Remove the power adapter cable from the motherboard by sliding the cable out of its socket.

Step 17



- Lift the motherboard off of the computer base.

Step 18



- Remove the four Phillips Head 3 mm #0 screws from the fan.
- Remove the fan cable from the motherboard by sliding the cable out of the socket.
- Lift the fan off of the motherboard.

To reassemble your device, follow these instructions in reverse order.