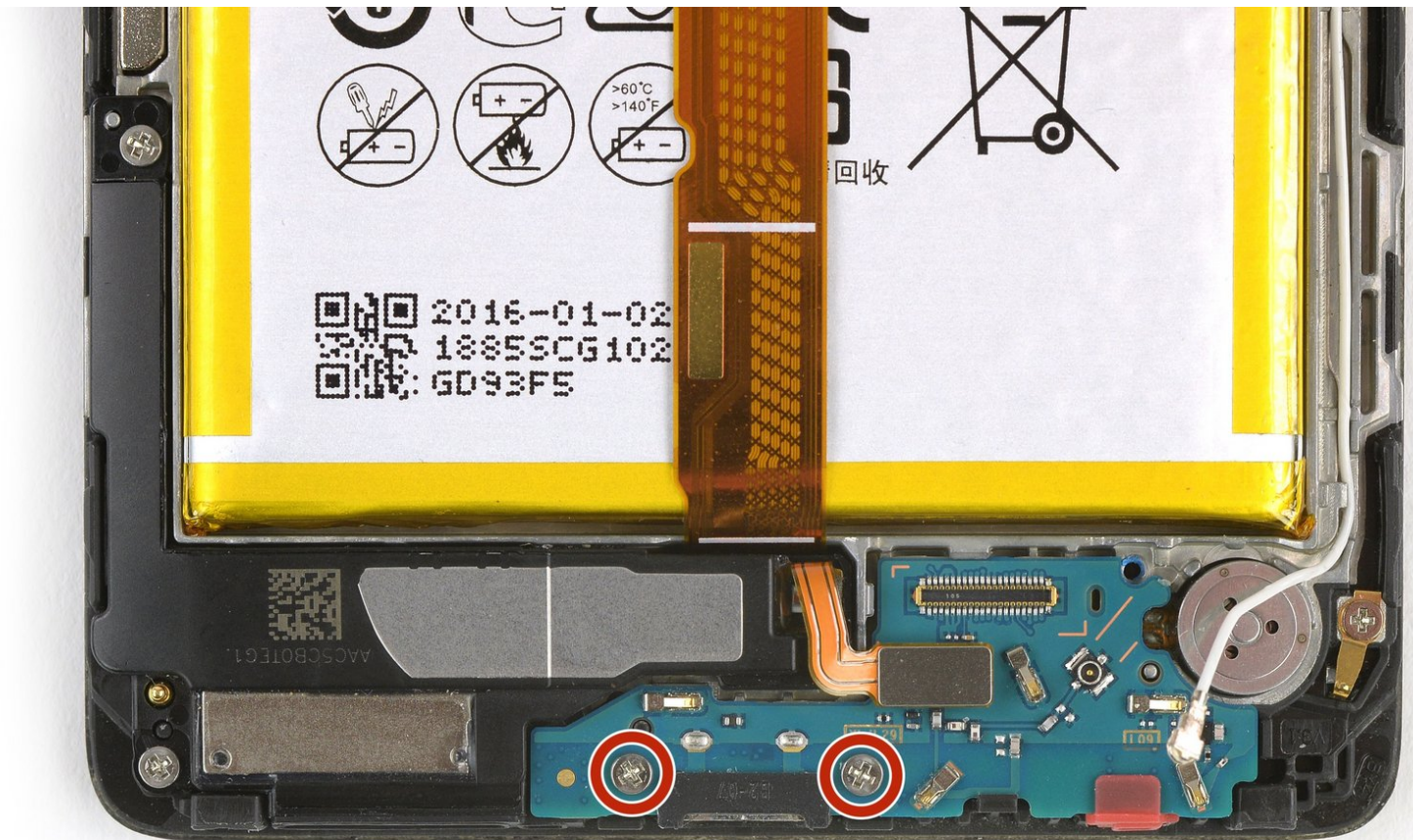




# Huawei Mate 8 Charging Board Replacement

Replace the charging board in your Huawei Mate 8 smartphone.

Written By: Theo Mat



# INTRODUCTION

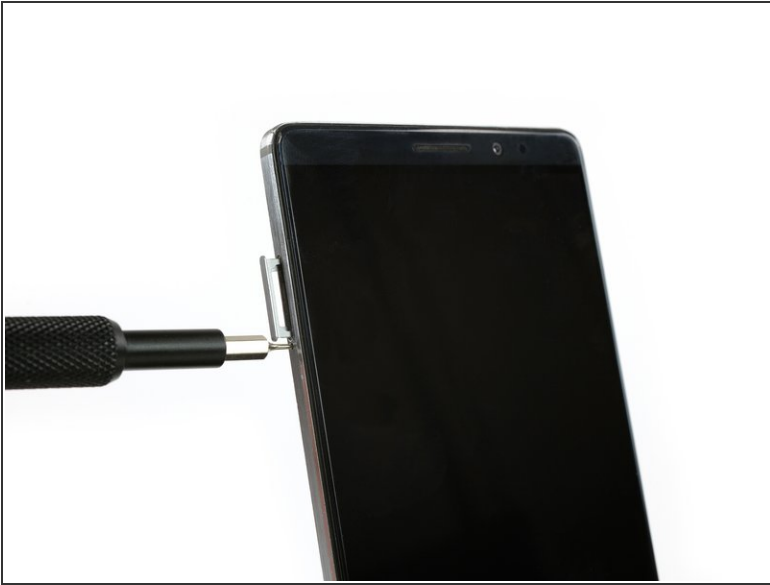
Use this guide to replace the charging board in your Huawei Mate 8 smartphone.



## TOOLS:

- [T2 Torx Screwdriver](#) (1)
  - [iFixit Opening Picks set of 6](#) (1)
  - [iSlack](#) (1)
  - [iOpener](#) (1)
  - [Phillips #000 Screwdriver](#) (1)
  - [Spudger](#) (1)
-

## Step 1 — Back Cover



- Switch off your phone and remove the SIM card tray.

## Step 2



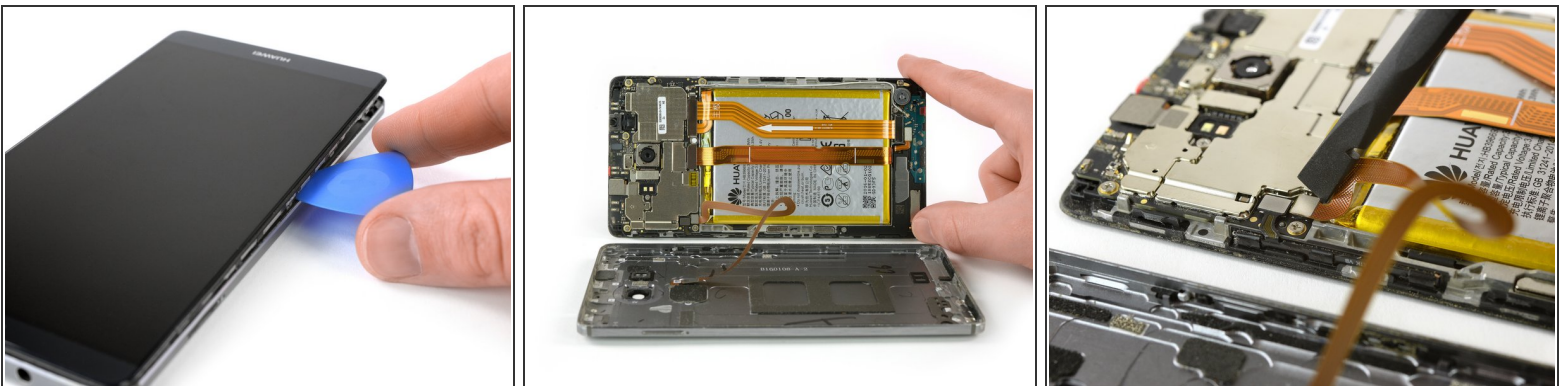
- Remove the Torx T2 screws from the bottom of the phone

### Step 3



- Use an iSclack or a suction handle in the bottom area of your phone to separate the display unit from the rear panel.

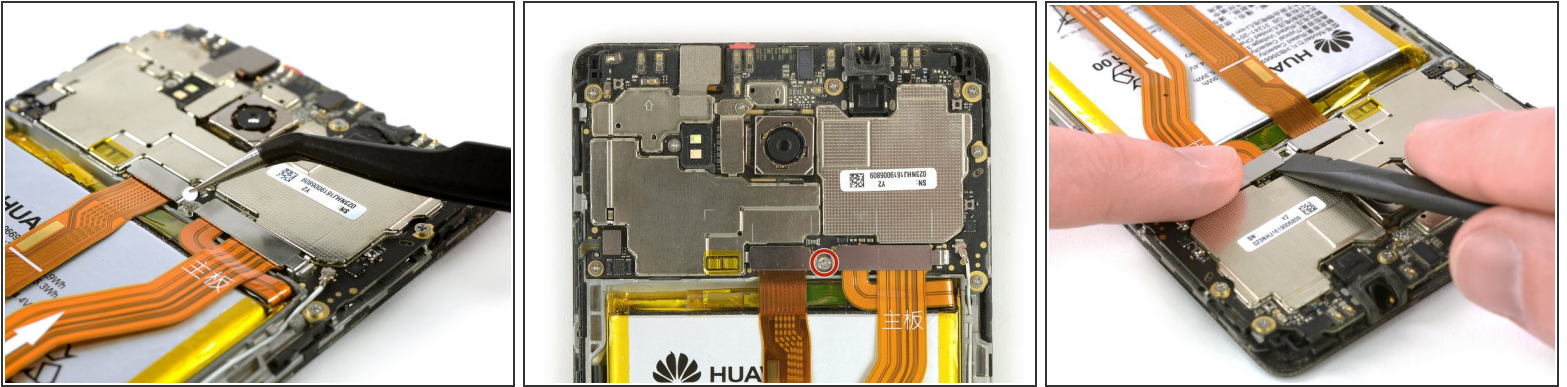
### Step 4



- Use an opening pick to fully separate the clips, releasing the phone.
- ⚠ Do not fully remove the rear case. The fingerprint sensor cable is still connected to the back cover.
- Open the phone like a book from the SIM tray side.
- Use a spudger, to disconnect the fingerprint sensor cable.

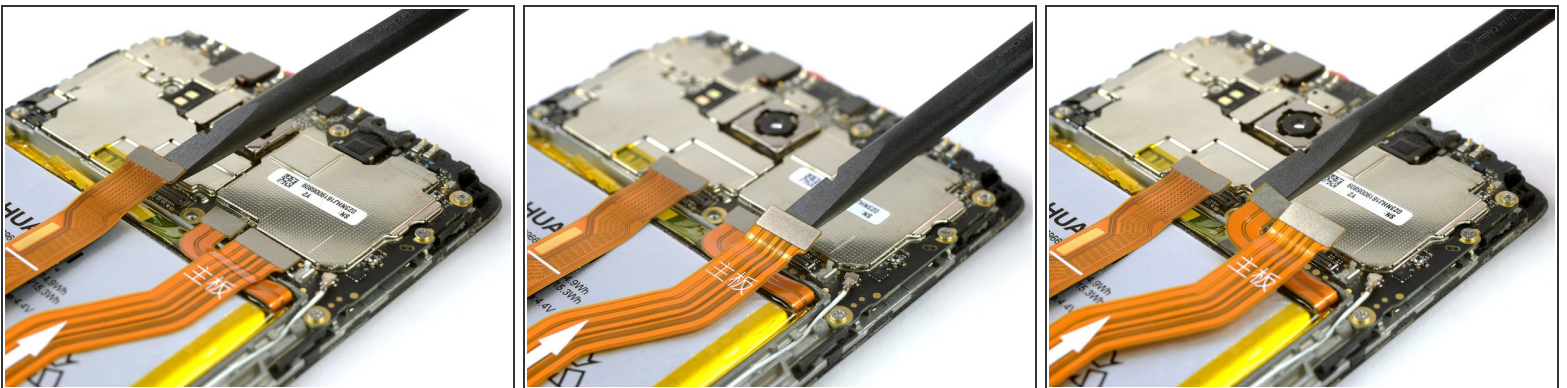


## Step 5 — Daughterboard interconnect cable



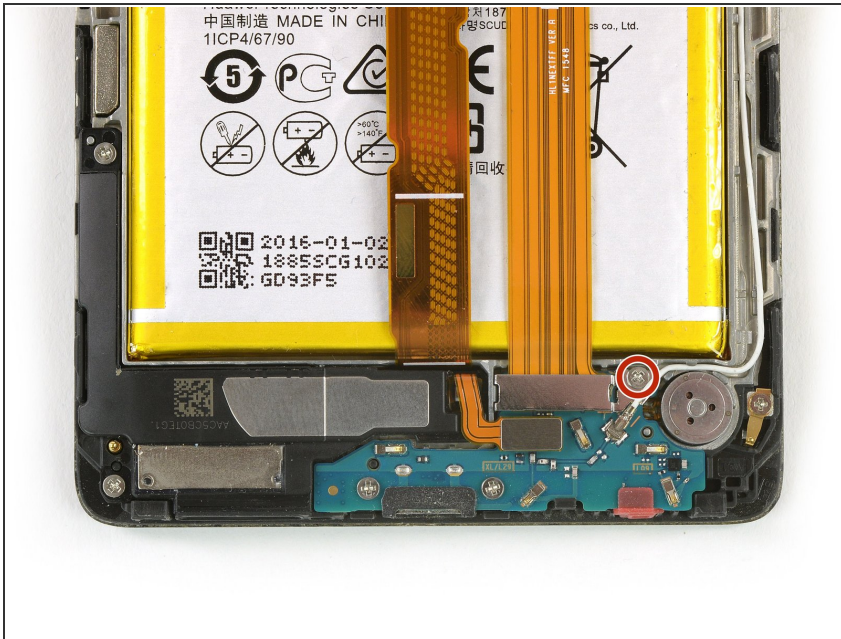
- Remove the liquid indicator sticker.
- Remove the Phillips #00 screw that holds down the metal shield.
- ⚠ The metal shield is tightly held in place. If you try to remove it without holding it down on one side, it'll break easily.
- Use a spudger to remove the metal shield.

## Step 6



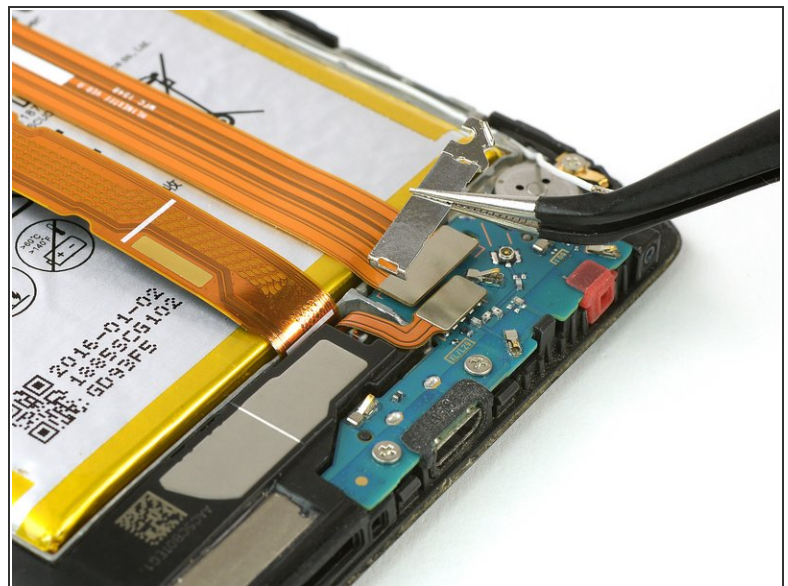
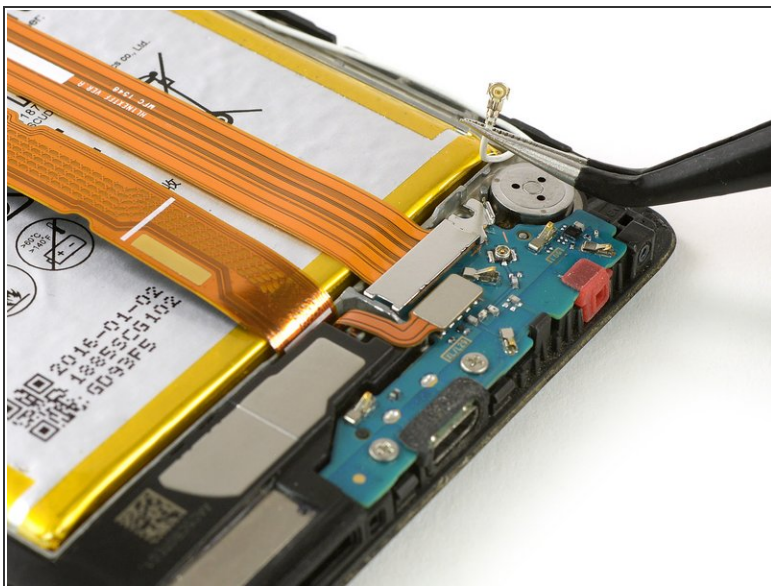
- Use the flat end of a spudger to disconnect the display, daughterboard interconnect, and battery cables.

## Step 7



- Remove the Phillips #00 screw that holds down the interconnect cable bracket.

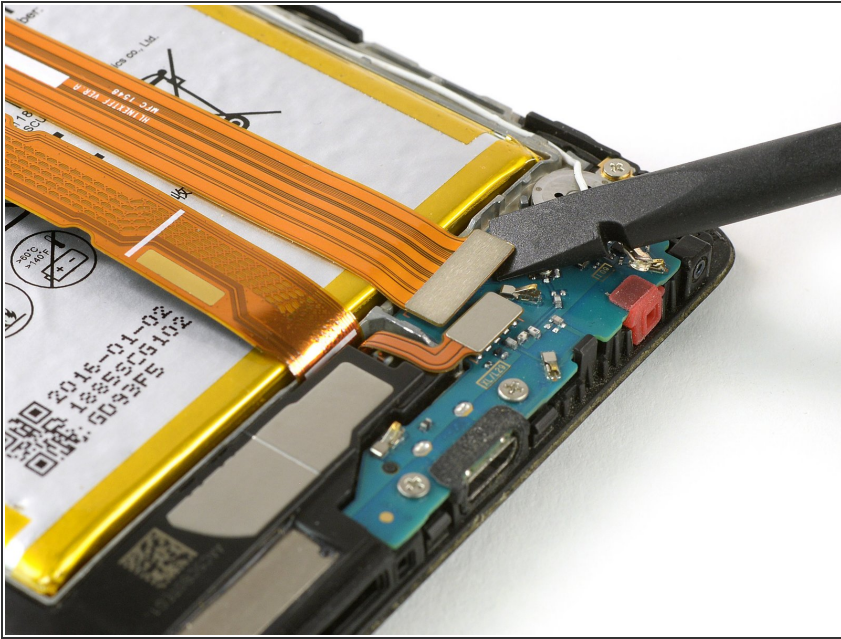
## Step 8



- Lift the coaxial connector off of its socket to allow access to the daughterboard interconnect cable bracket.
- Remove the bracket.

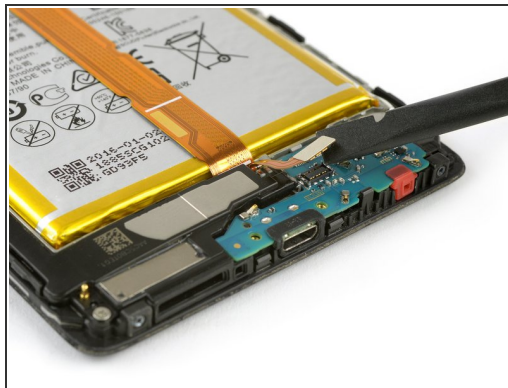
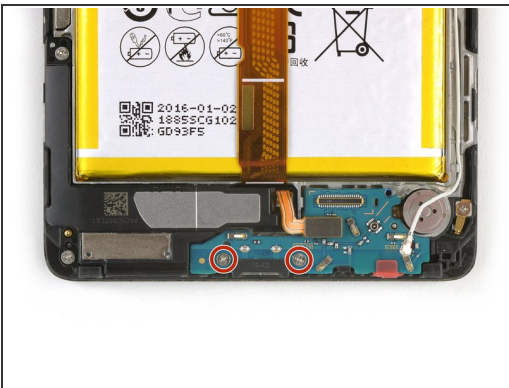


## Step 9



- Use a spudger to disconnect the interconnect cable.
- Remove the interconnect cable.

## Step 10 — Charging Board



- Remove the two Phillips #00 screws.
- Use the flat end a spudger to disconnect the loudspeaker flex connector.
- Use the pointy end of a spudger to pry out the daughterboard.
- Remove the daughterboard.

To reassemble your device, follow these instructions in reverse order.

This document was generated on 2020-11-21 09:46:42 AM (MST).

