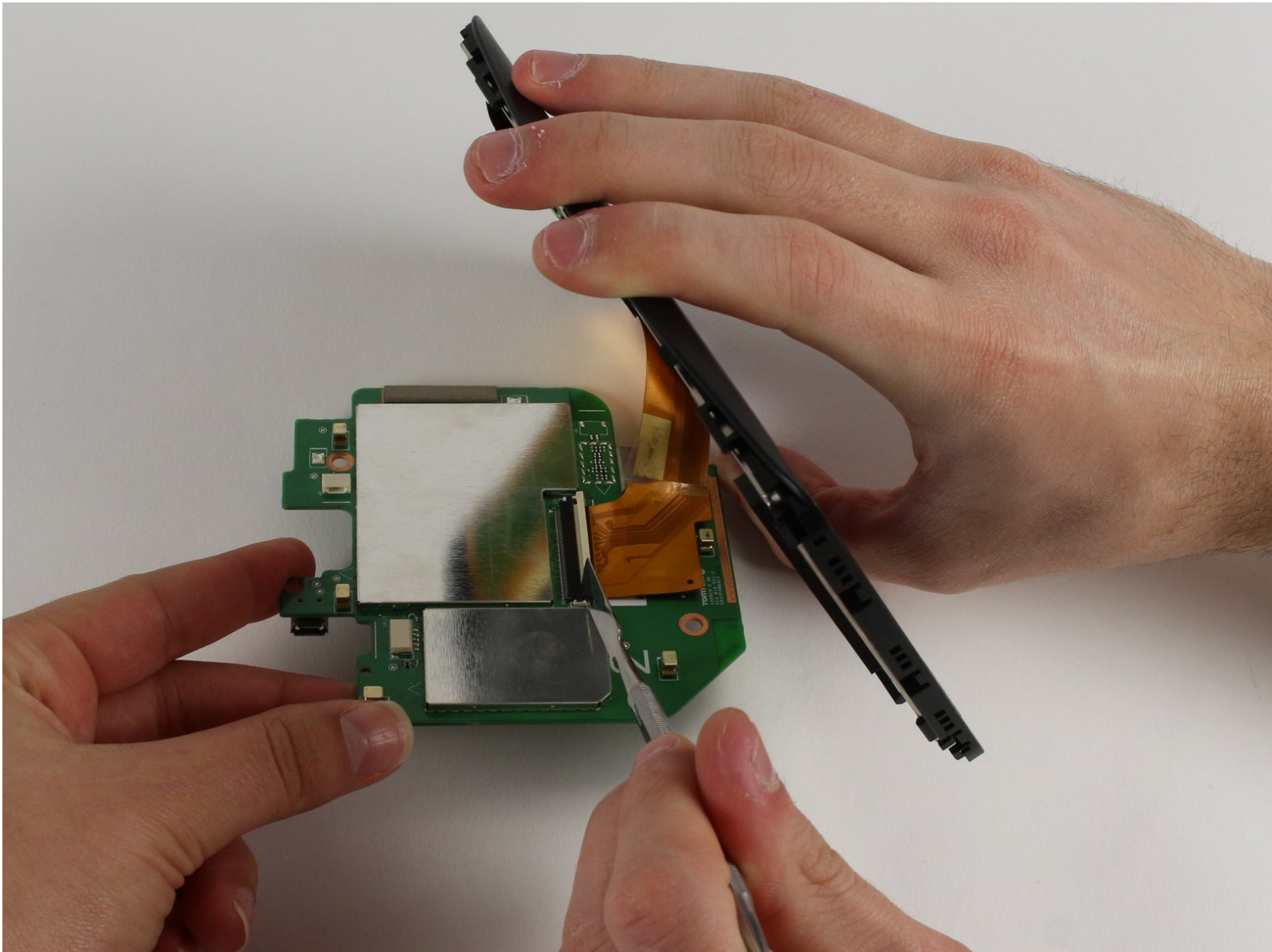




# TomTom VIA 1530 TM Motherboard Replacement

This guide will show how to properly remove the TomTom VIA 1530 TM Motherboard.

Written By: Jennifer Zakaria



---

## INTRODUCTION

The motherboard is a large and central part to the GPS, with most components either connected or interfaced with it. Since this must be removed or dislodged in order to reach other interior components of the device, this guide will show how to remove it properly.



### TOOLS:

- [T5 Torx Screwdriver](#) (1)
  - [iFixit Opening Tools](#) (1)
  - [Metal Spudger](#) (1)
  - [JIS #00 Screwdriver](#) (1)
-

## Step 1 — Back



- Position the device so that the underside is facing up.
- Tilt the EasyPort Mount slightly upward and rotate it counterclockwise 180 degrees from the initial position.
- Firmly grab the EasyPort Mount and remove it.
- ⓘ If it does not dislodge easily, gently twist the EasyPort Mount, applying increasing pressure until it does.

## Step 2



- Turn the device 180 degrees so the screw in the EasyPort Mount compartment is on top.
- Remove the 2mm screw beneath the EasyPort Mount compartment with the Torx T-5 head Screwdriver.

## Step 3



- Flip the device over so that the screen is facing up.
- Wedge the plastic opening tool between the top and bottom of the device's frame, gently sliding it around the outside edge.
- ⓘ It may be easier to start at one of the corners.
- ⚠ The gold ribbon cable connecting the screen to the motherboard is fragile and tears easily.
- ⓘ This specific device's ribbon cable is torn.



## Step 4



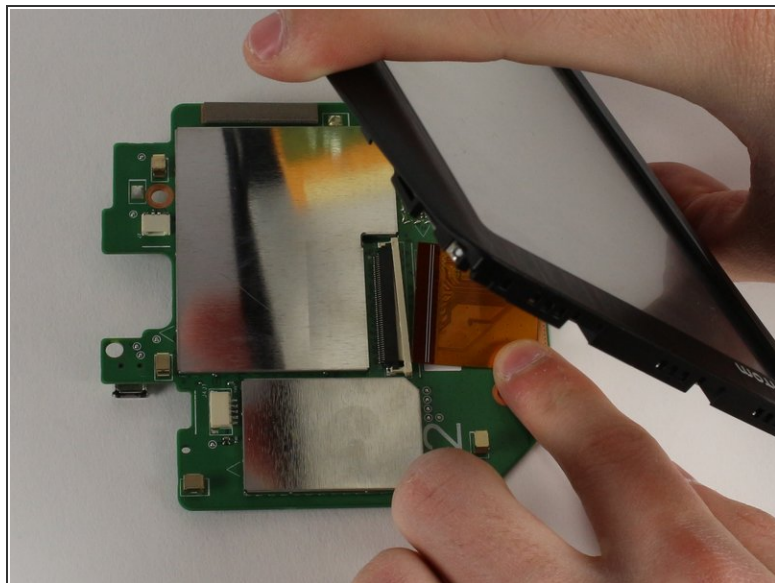
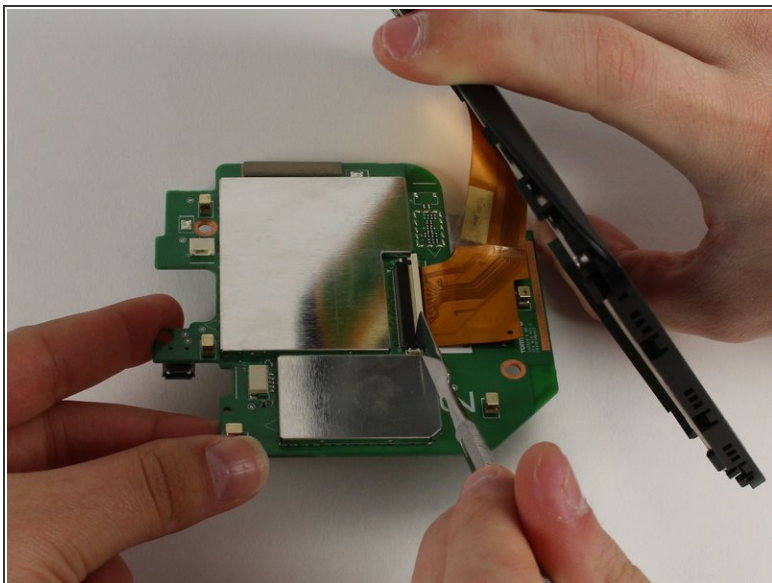
- Carefully slide the screen forward, revealing the lower portion of the motherboard.
- Remove the 3.6mm screw using the JIS #00 Screwdriver.
- Rotate the device 180 degrees, carefully slide back the screen, and remove the remaining two screws.

## Step 5



- Disconnect the battery and speaker cables.
- Unlatch the motherboard from the case.

## Step 6 — Motherboard



- Wedge a spudger between the white plastic latch and the black connection port, disconnecting the gold ribbon cable.
- Slide the gold ribbon cable out of the port.

To reassemble your device, follow these instructions in reverse order.