



Keurig K55 Secondary Water Pump Replacement

How to replace the Keurig K55 secondary water pump.

Written By: Mark Toujiline



INTRODUCTION

Removal and replacement of the Keurig K55 secondary water pump.

TOOLS:

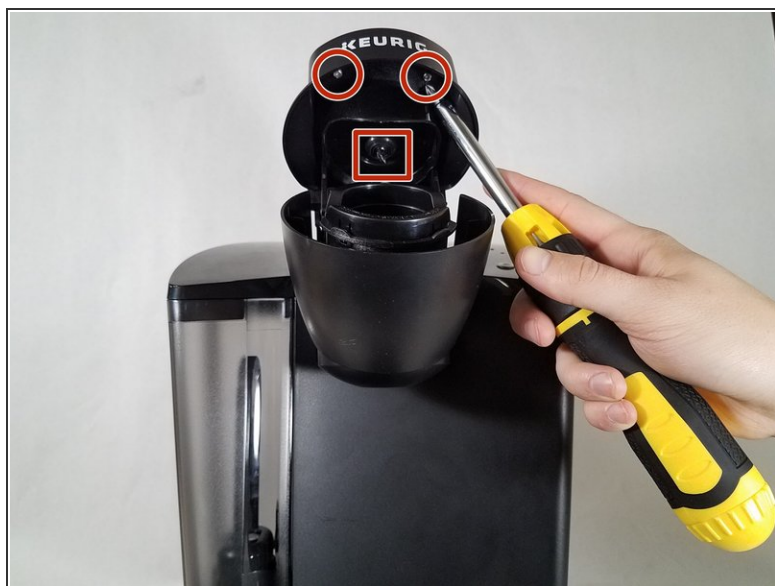
- [Phillips #0 Screwdriver](#) (1)
-

Step 1 — Secondary Water Pump



- Lift the silver handle up.
- Locate the screw and washer holding the handle in place on each side.
- Remove both 13mm screws and washers using a Phillips #0 screwdriver.

Step 2



- Grab the handle and pull it upward and toward the rear of the device.
- Lift the lid to the fully open position.
- Remove the two 11mm Phillips screws located on the upper part of the device.

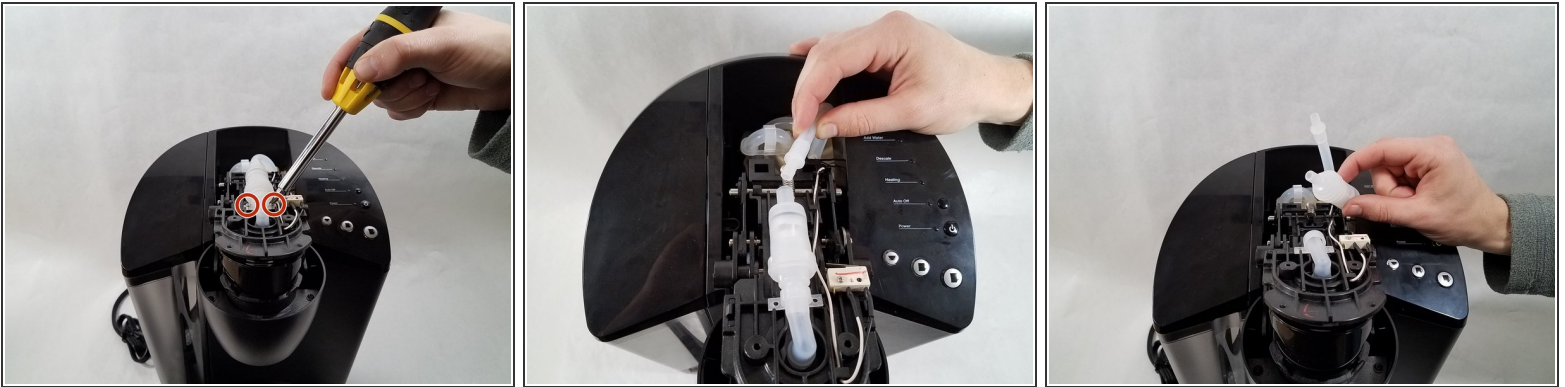
⚠ Be careful removing the screws; the needle here may be sharp.

Step 3



- Lower the lid to just before its closing position.
- Grab the black top cover with the Keurig logo and gently push back toward the rear of the device to release it.
- Gently pull the top cover upward and toward the front of the device to remove it.

Step 4



- Remove the two 11mm Phillips head screws securing the water pump.
- Grab the secondary water pump firmly and pull one of the plastic water lines off of the pump.
- Pull the other line from the water pump.

To reassemble your device, follow these instructions in reverse order.