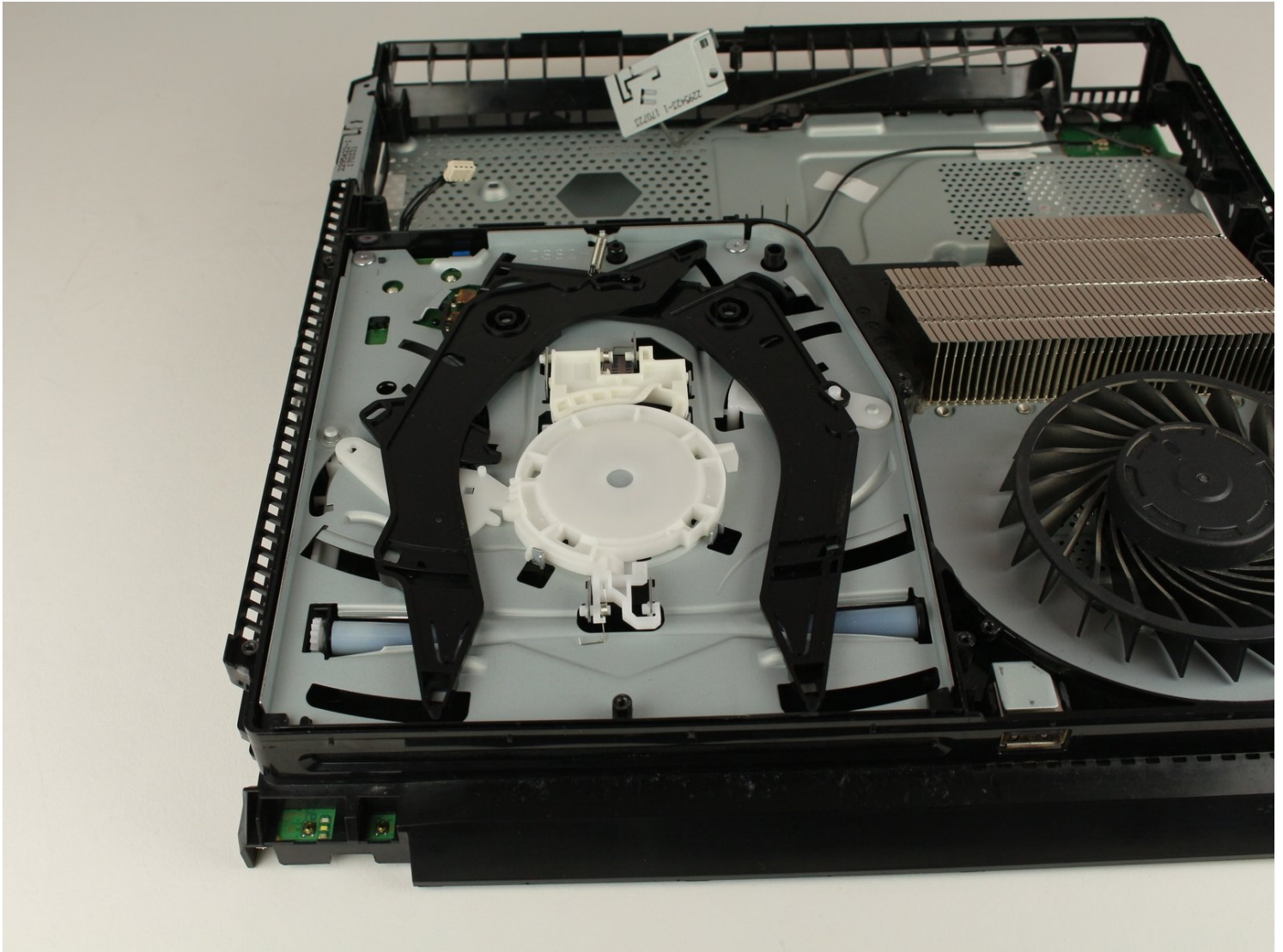




# PlayStation 4 Slim Optical Disc Drive Replacement

Use this guide to remove or replace your...

Written By: Hernan Rodriguez



# INTRODUCTION

Use this guide to remove or replace your Playstation 4 Slim's disc drive.

Note: If your replacement disc drive did not come with flex cables, you will have to transfer the cables from your original drive.

---

## TOOLS:

[TR8 Torx Security Screwdriver](#) (1)

[Phillips #1 Screwdriver](#) (1)

[iFixit Opening Tool](#) (1)

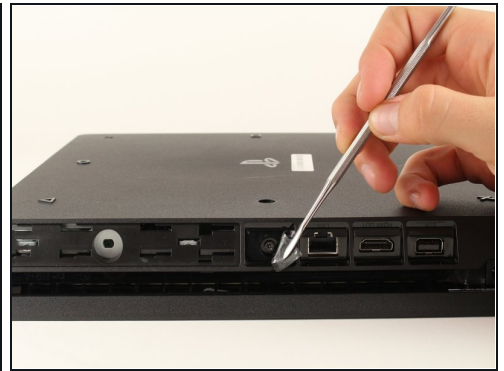
[Metal Spudger](#) (1)

## PARTS:

[PlayStation 4 Slim Optical Drive](#) (1)

---

## Step 1 — Bottom Cover



- Locate the plastic warranty sticker next to the three ports on the side of the console.
- Remove the warranty sticker by peeling it off with any kind of spudger.

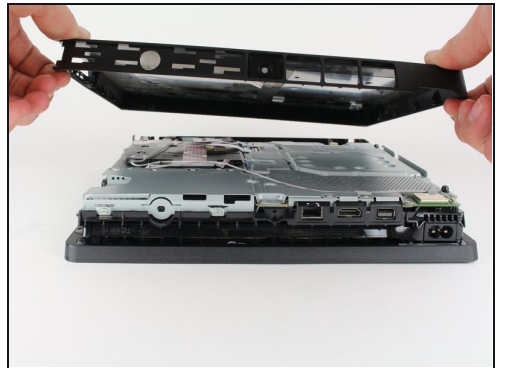
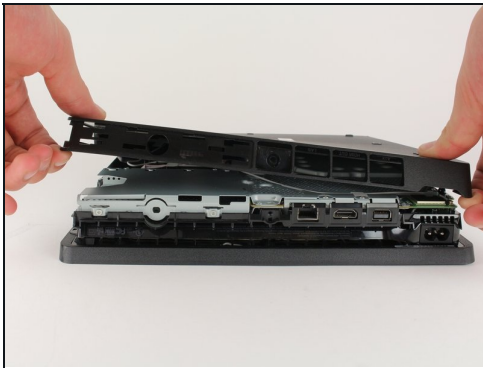
 Removing the warranty sticker will NOT cause your warranty to be null and void.

## Step 2



- Unscrew and remove the now exposed 5.0mm screw using a T8 security Torx screwdriver with a counter-clockwise motion.

## Step 3



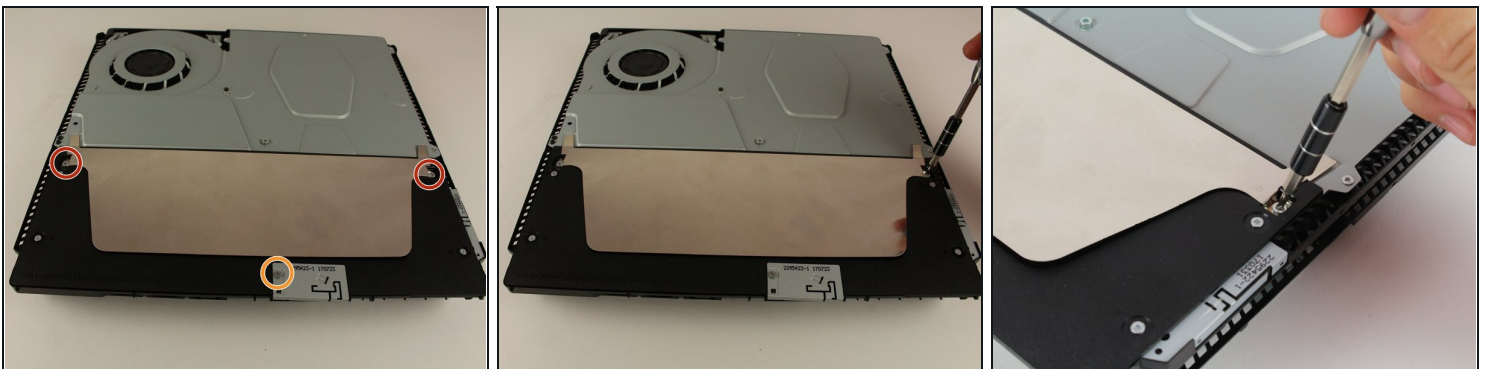
- Place the Playstation 4 Slim upside down with the side of the screw you just removed facing you.
- Pry up on the two corners that are facing you with your fingers.
- ① This may take a bit of force to open up and you will hear a fairly loud click when the bottom cover detaches.
- Remove the bottom cover by sliding it towards the back corners and lifting up.

## Step 4 — Power Supply



- Place the Playstation 4 Slim right side up, with the PS logo on top and the side with the words "SONY" and "PS4" facing you.
- Pry up on the two corners that are facing you with your fingers.
- ⓘ This may take a bit of force to open and you will hear a fairly loud click when the top cover detaches.
- Remove the top cover by sliding it towards the back corners and lifting up.

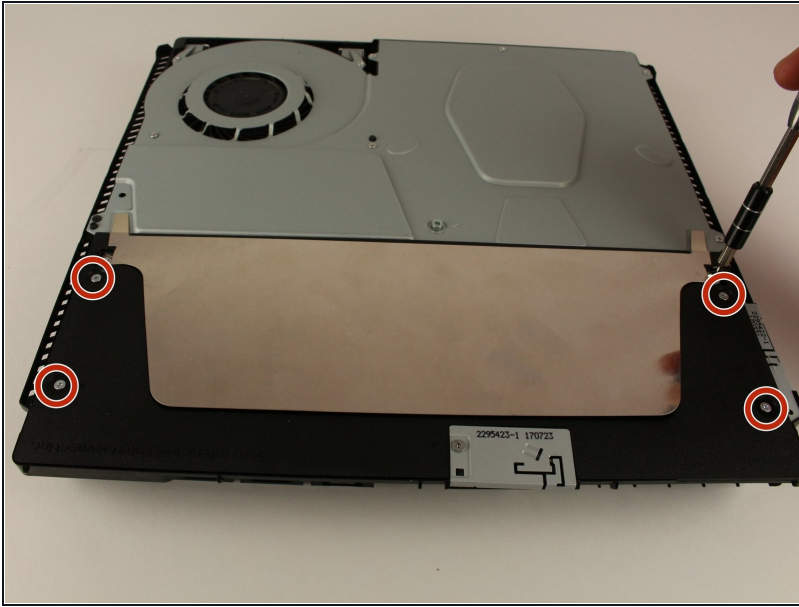
## Step 5



- Unscrew and remove the two screws (left one 31.0mm and right one 24.0mm) using a T8 screwdriver with a counter-clockwise motion.
- Unscrew and remove the 3.0mm screw using a Phillips #1 screwdriver with a counter-clockwise motion.

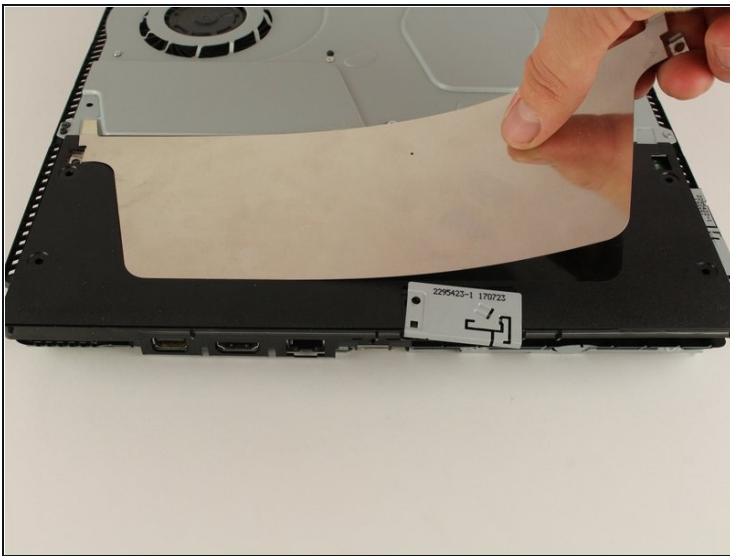


## Step 6



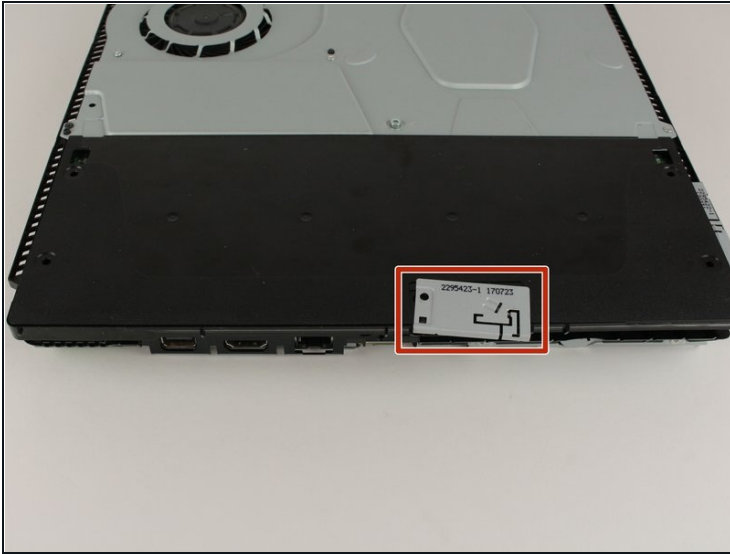
- Remove the four 16mm Philips screws holding the power supply in place.

## Step 7



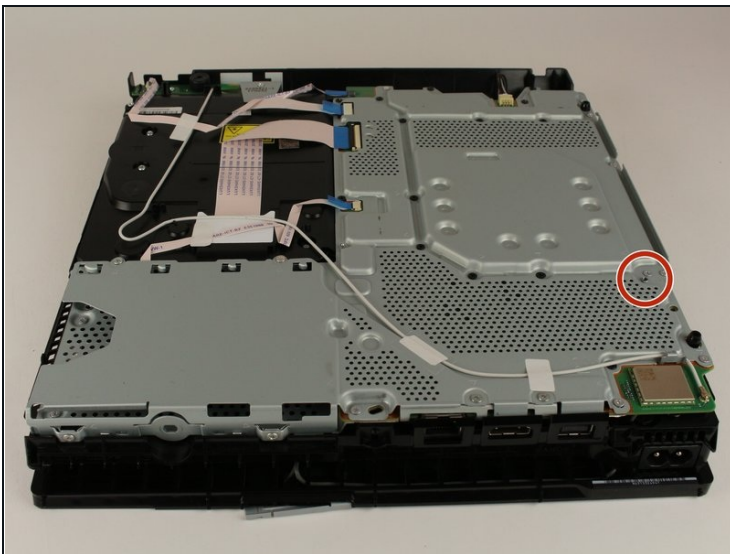
- Remove the metal sheet from the top of the power supply by grabbing and lifting up with your hands.

## Step 8



- Remove the antenna from the top of the power supply by guiding the wire with your fingers through the grooves underneath the metal panel.

## Step 9



- Flip the Playstation 4 Slim onto its back.
- Unscrew and remove the 4.0mm screw using a Phillips #1 screwdriver with a counter-clockwise motion.

## Step 10



- Use a plastic opening tool to make space between the power supply and console by wedging and wiggling it in-between the two.
- Lift the power supply up and onto its back on the metal sheet using your hands.

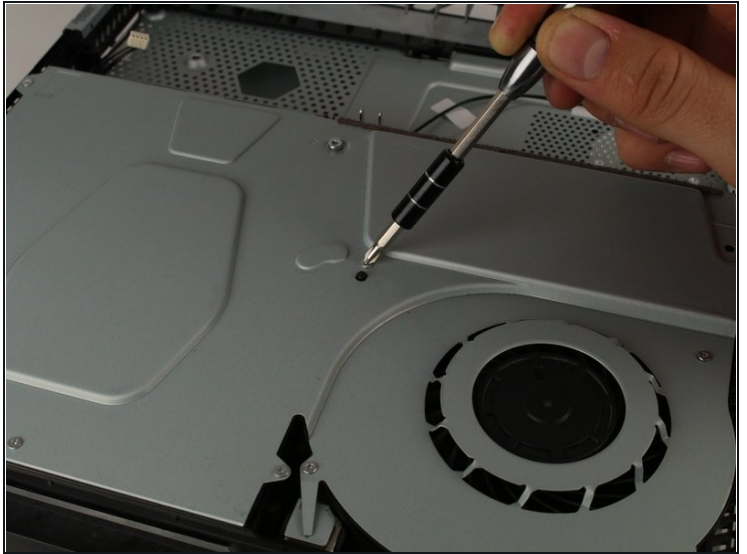
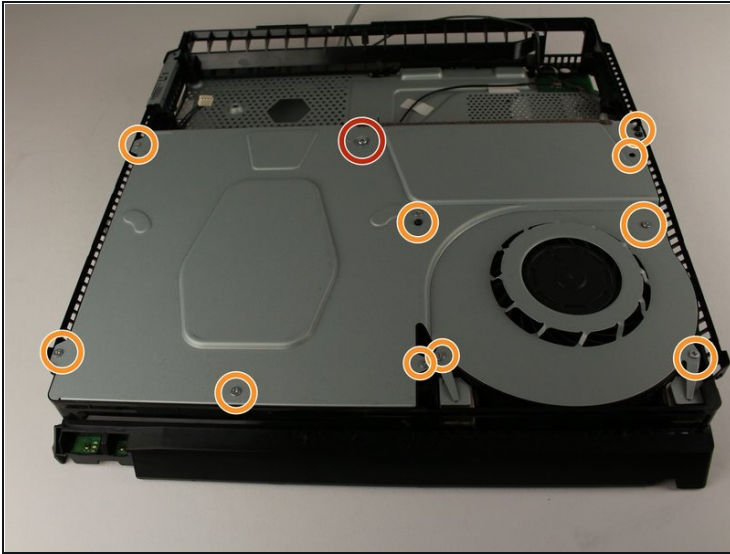
## Step 11



- Disconnect the wire connection from the power supply by firmly gripping it with your fingers or tweezers and pulling out.
- Remove the power supply completely by grabbing and lifting up with your hands.

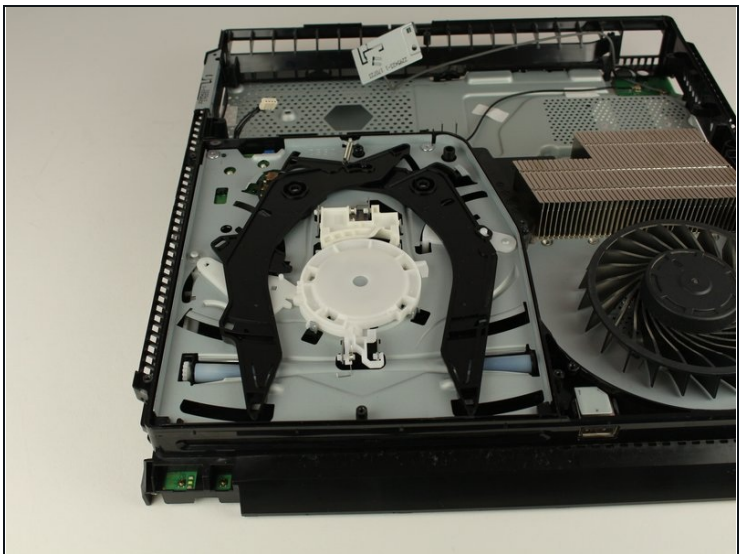


## Step 12 — Optical Disc Drive



- Unscrew and remove the 31.0mm screw using a T8 screwdriver with a counter-clockwise motion.
- Unscrew and remove the 10x 5.0mm screws using a Phillips #1 screwdriver with a counter-clockwise motion.

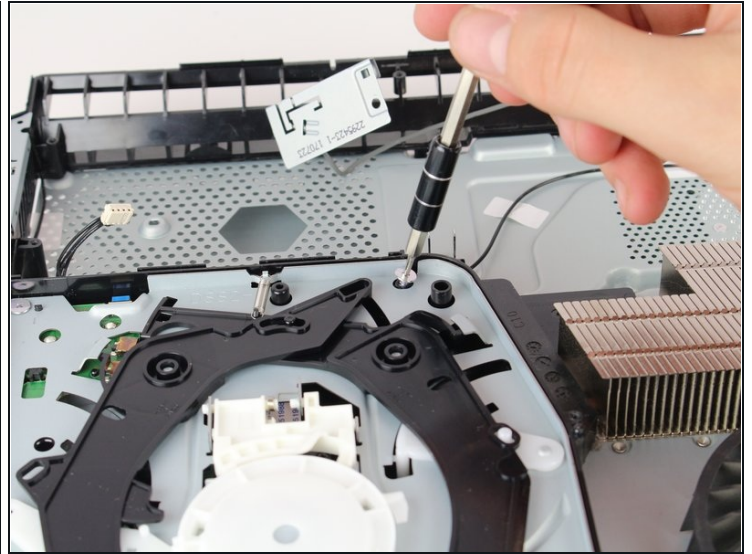
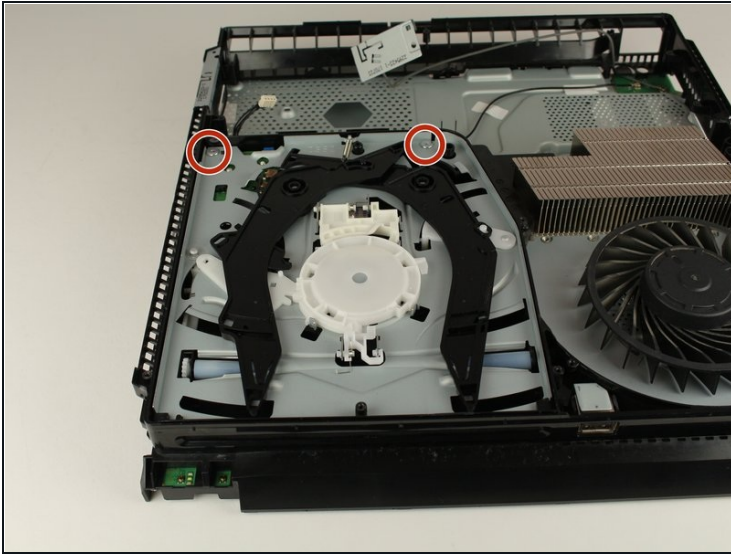
## Step 13



- Remove the metal plate by grabbing the edges and lifting up with your hands.

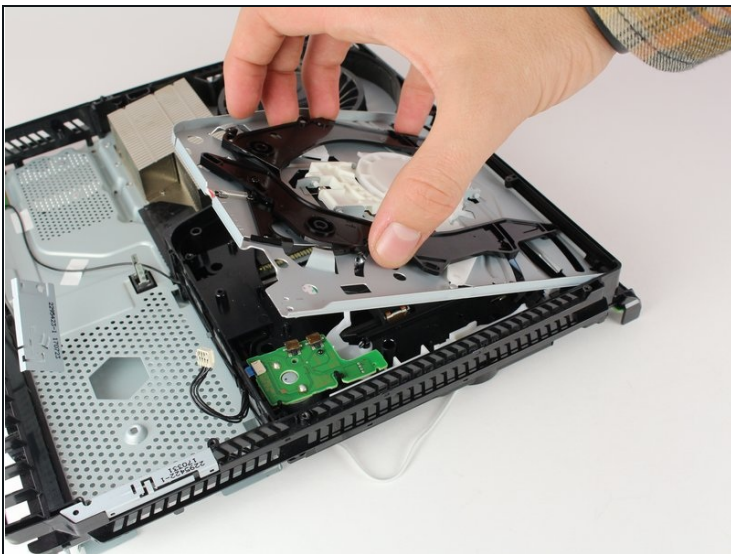


## Step 14



- Unscrew and remove the two 3.0mm screws using a PH000 screwdriver with a counter-clockwise motion.

## Step 15



- Remove the disk drive out by pinching on either side of the two black plastic "claws" and lifting up with your hand.

To reassemble your device, follow these instructions in reverse order.