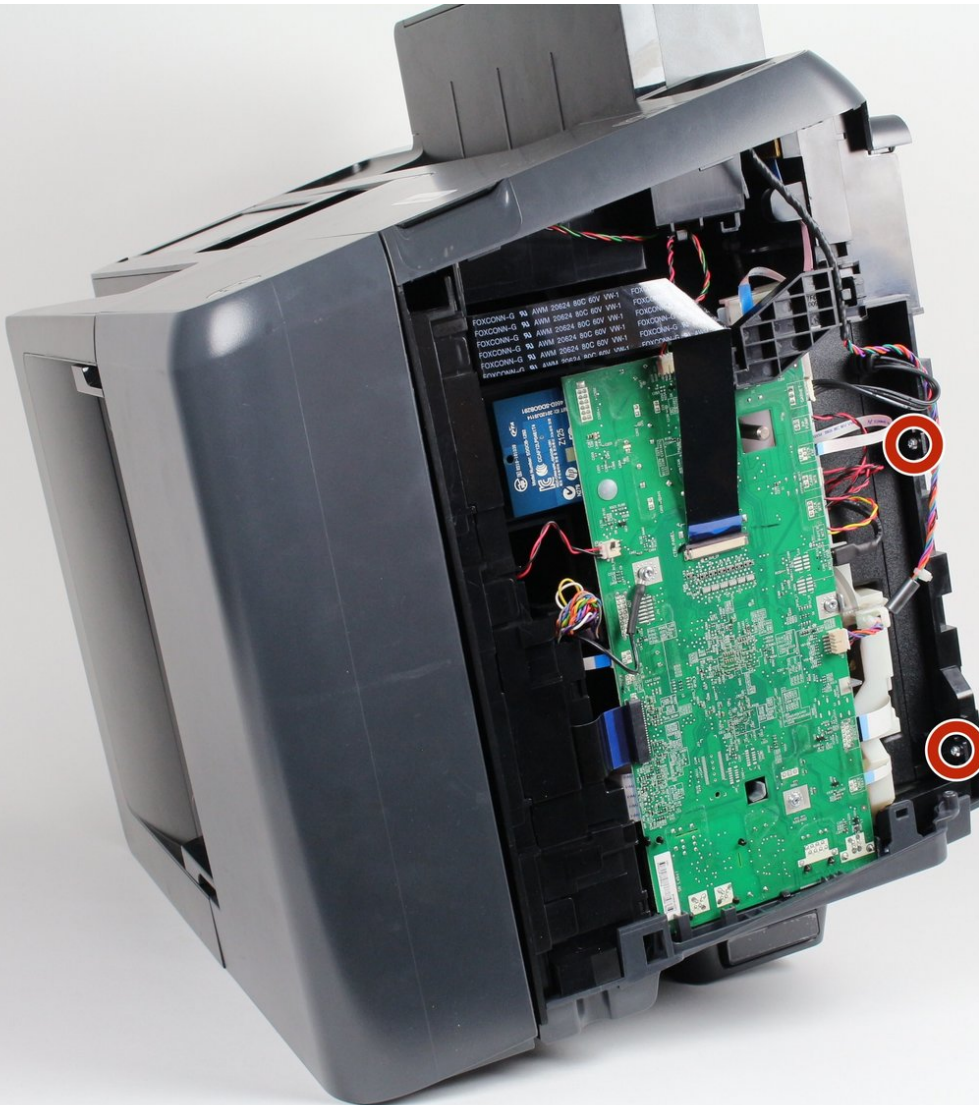




# HP Officejet Pro 8620 Power Adapter Replacement

How to replace the power adapter inside the HP Officejet Pro 8620.

Written By: Scott



---

# INTRODUCTION

This guide will help you replace your power adapter inside the printer.



## TOOLS:

- [TR8 Torx Security Screwdriver](#) (1)
  - [TR9 Torx Security Screwdriver](#) (1)
-

## Step 1 — Left Panel



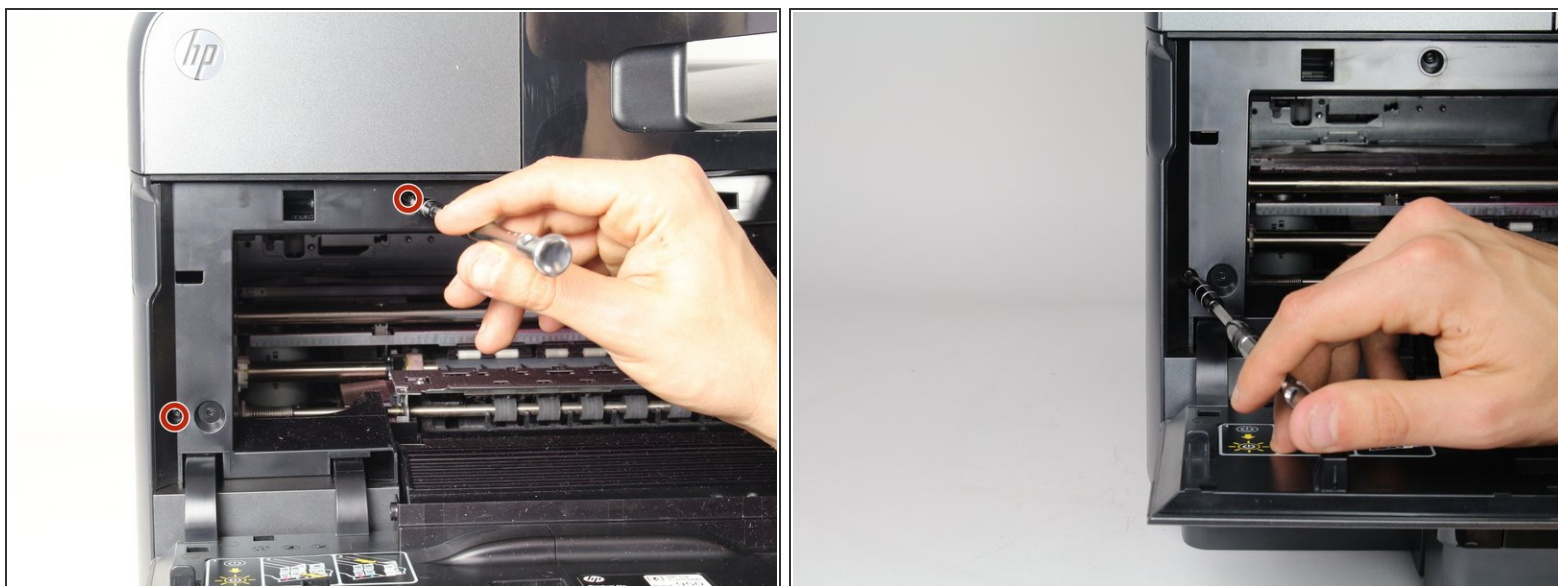
- Turn off the printer and remove the power cable.
- Remove two 13mm T9 screws using a T9-Torx screwdriver. Turn counterclockwise until the screws are released.

## Step 2



- Open the front door by placing your finger on the indented groove on the left side of the printer and pulling down
- ⓘ This will give you access to the two T9-TORX 13mm screws that need to be removed to release the panel.

## Step 3



- Remove the two 13mm screws with a T9-TORX screwdriver by turning counter-clockwise (left).

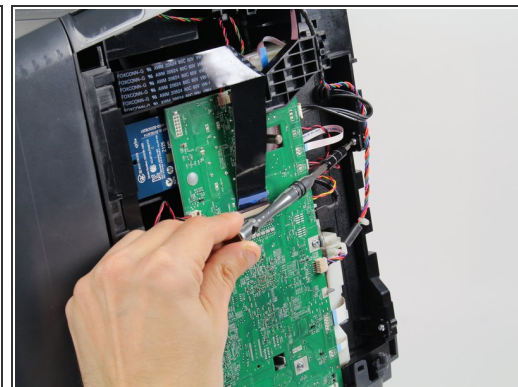
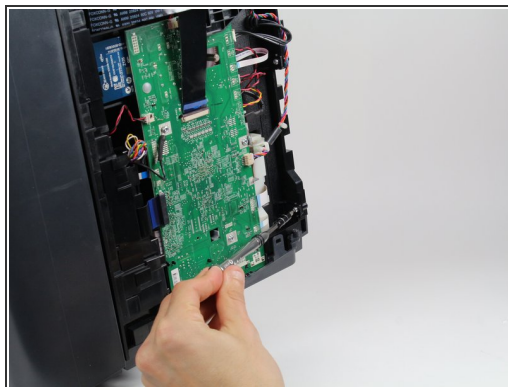
## Step 4



- Gently remove the left side panel by placing your palm flat against the surface and pulling down.

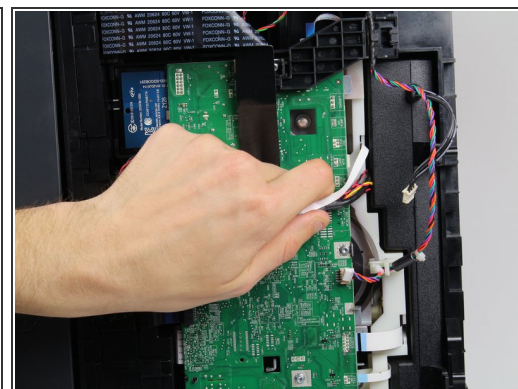
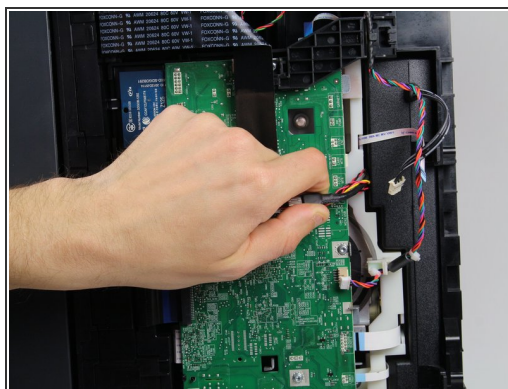
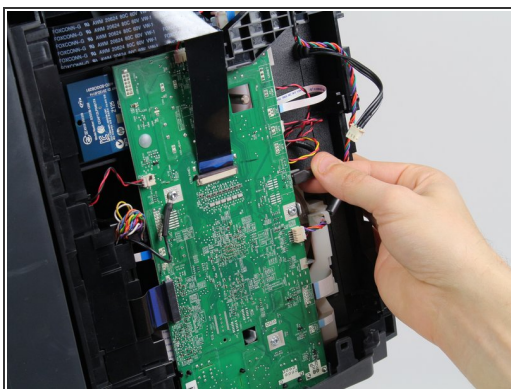


## Step 5 — Power Adapter



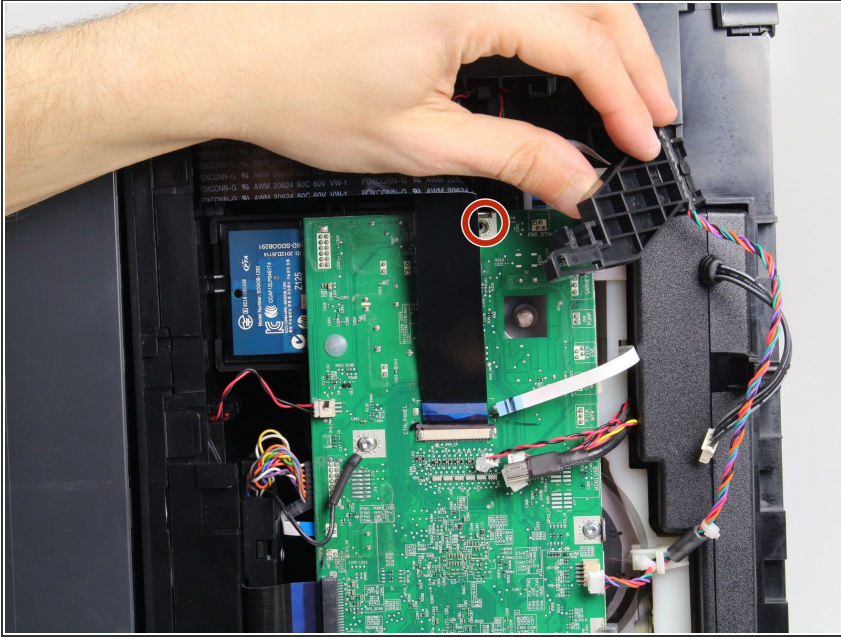
- Remove two screws 13mm screws with a T9-Torx screwdriver by rotating them counterclockwise.

## Step 6



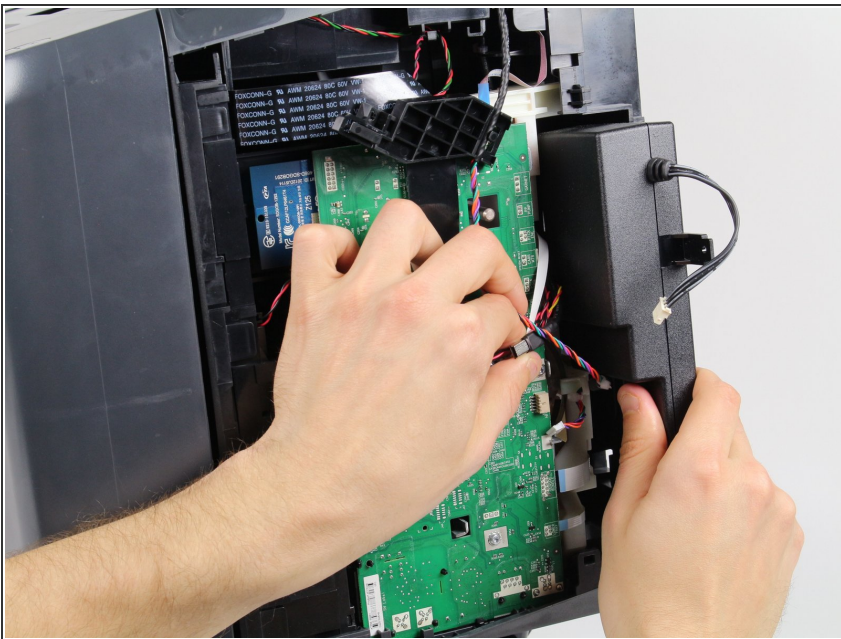
- Unplug the black cable .
- Move all the cables and wires to the top of the motherboard to allow the power adapter underneath to be removed freely.

## Step 7



- Gently bend the black ribbon cable.
- Remove one 8mm T8 screw underneath the ribbon cable by rotating it counterclockwise with a T8 -Torx screwdriver.
- Take out the black plastic cover and the colored wires connected to it.
- ⓘ Now you have cleared a passage for the power adapter to be taken out.

## Step 8



- Gently pulling out the power adapter.
- ⓘ Be careful with all the wires when pulling out the adapter.

To reassemble your device, follow these instructions in reverse order.