



Alienware M15x Hard Drive Replacement

Upgrade or replace the hard drive in an Alienware M15x.

Written By: David Sann



INTRODUCTION

This guide provides instructions on how to upgrade or replace the hard drive in an Alienware M15x.



TOOLS:

- [Fingers](#) (1)
 - [Phillips #0 Screwdriver](#) (1)
 - [Phillips #1 Screwdriver](#) (1)
-

Step 1 — Battery



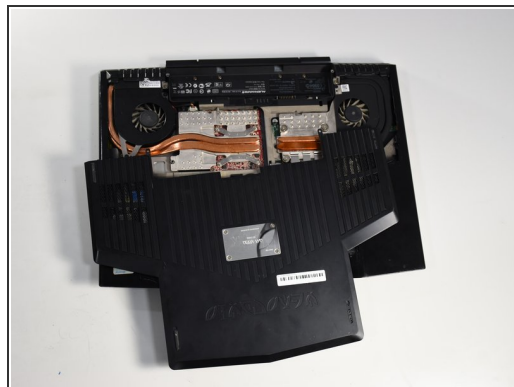
- Remove the battery by sliding the latch to the left and pulling the battery up.

Step 2 — Compartment Door



- Remove the two 4-mm screws that hold the compartment door to the rest of the computer using a PH#0 screwdriver tip.

Step 3



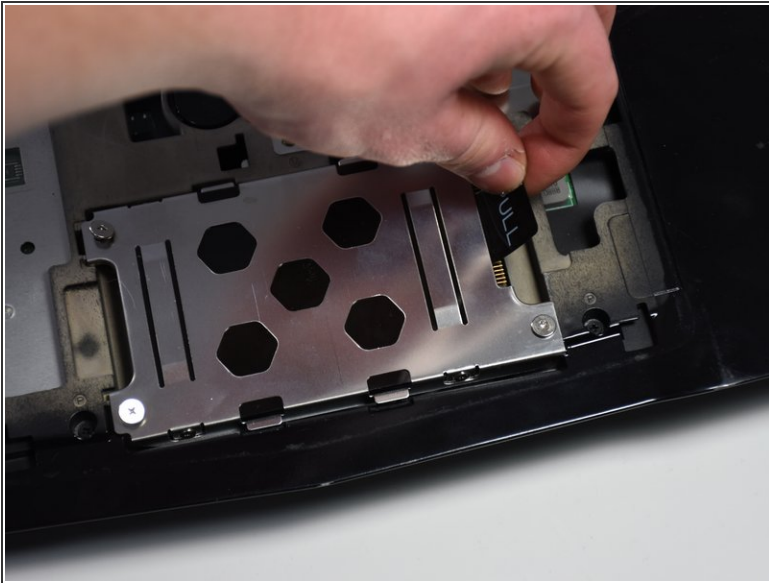
- Slide the compartment door towards the front of the computer and lift.

Step 4 — Hard Drive



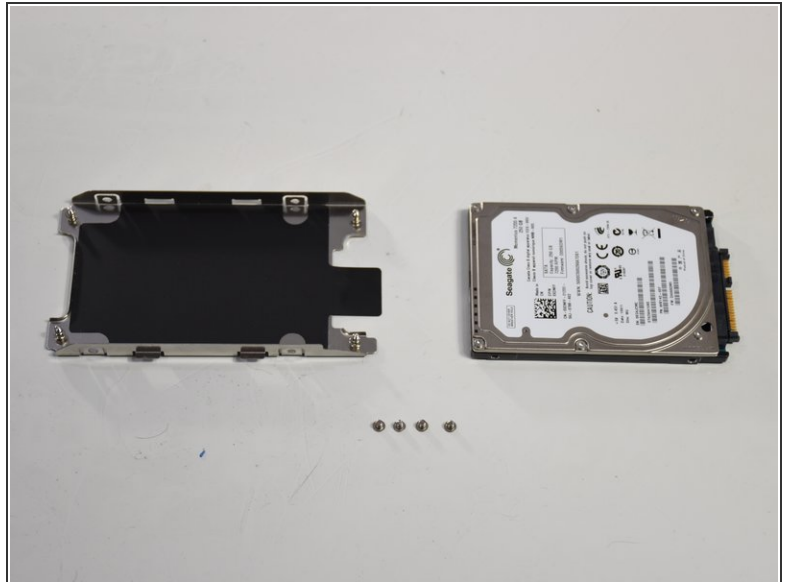
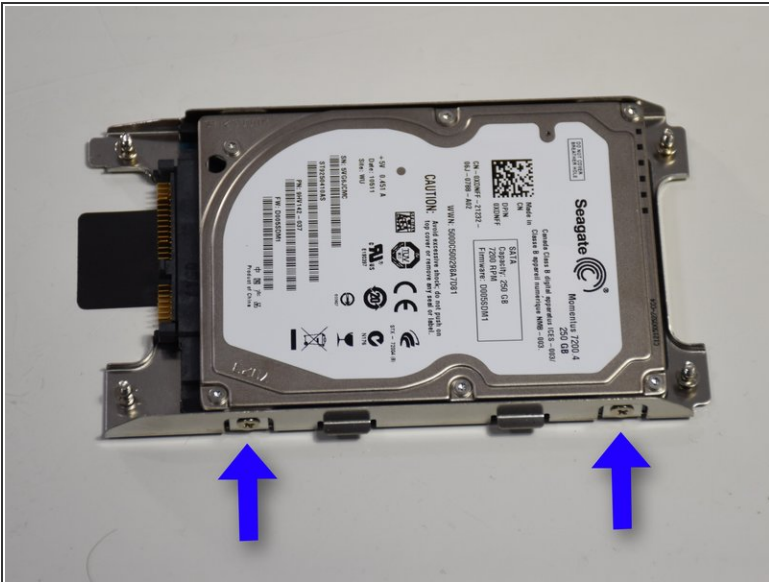
- Use Phillips #1 screwdriver to loosen the four screws on the hard drive enclosure.

Step 5



- Once the screws are loosened use the "PULL" tab to remove the current hard drive from the computer.

Step 6



- Remove the four small screws indicated to remove the casing to the hard drive.

Step 7



- Now take off the SATA converter and then connect it to the drive you would like to replace it with.

To reassemble your device, follow these instructions in reverse order.