



Alienware M15x GPU Replacement

If you are experiencing issues playing certain...

Written By: Tomas Kronmark



INTRODUCTION

If you are experiencing issues playing certain games or frequently see a blue error screen, this might be because the graphics processing unit (GPU) is faulty, meaning it is time to replace it. This guide will help the user replace the GPU on the Alienware M15x laptop. Several steps involve unscrewing tiny screws from the laptop; please ensure that you keep all screws in a secure location as they will be used to rebuild the laptop.

TOOLS:

[Phillips #1 Screwdriver](#) (1)
[Phillips #0 Screwdriver](#) (1)
[iFixit Opening Tool](#) (1)
[Tweezers](#) (1)

PARTS:

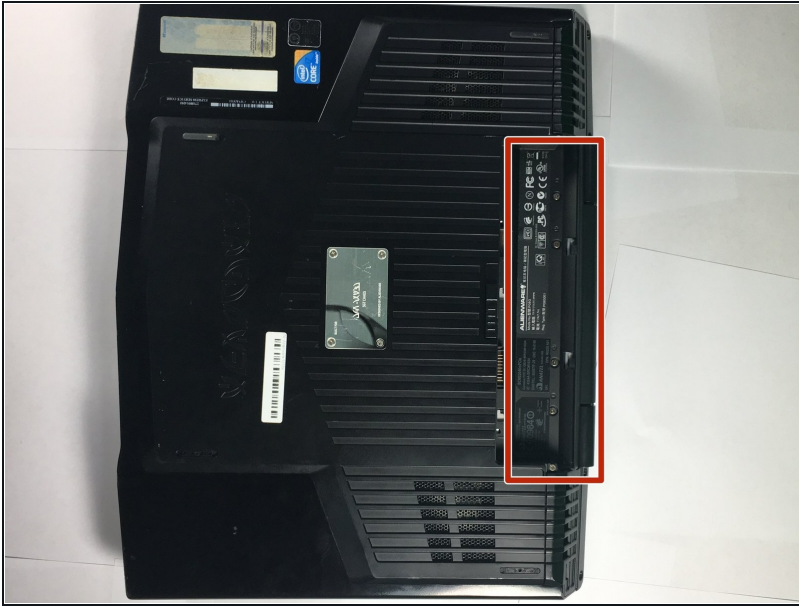
[Alienware M15x \(P08G\) GTX 260M GPU](#)
(1)

Step 1 — GPU



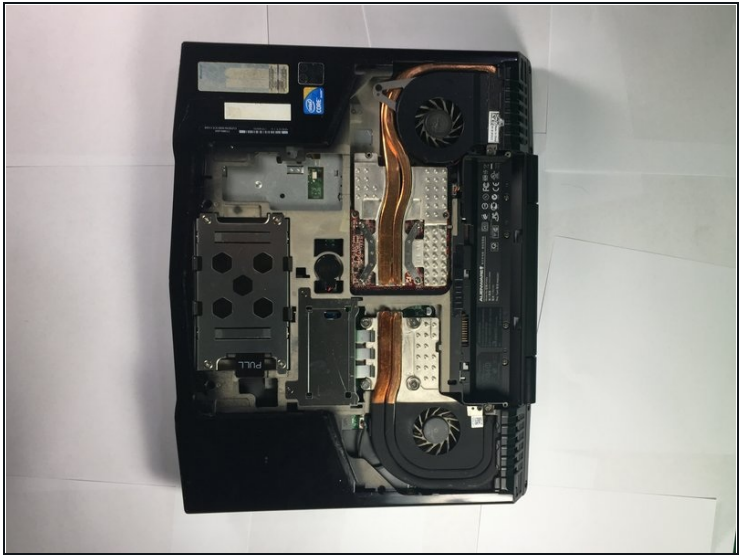
- Turn the laptop over so that the bottom is facing upward.

Step 2



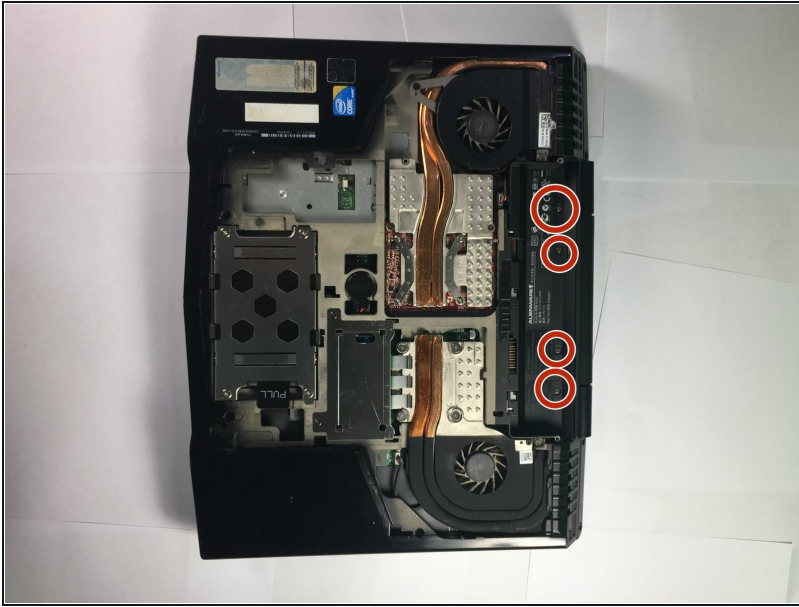
- Release the battery latch and flip the battery out.

Step 3



- Remove the two 4mm screws using a Phillips #1 screwdriver.
- Remove the compartment door by sliding it away from the battery.

Step 4



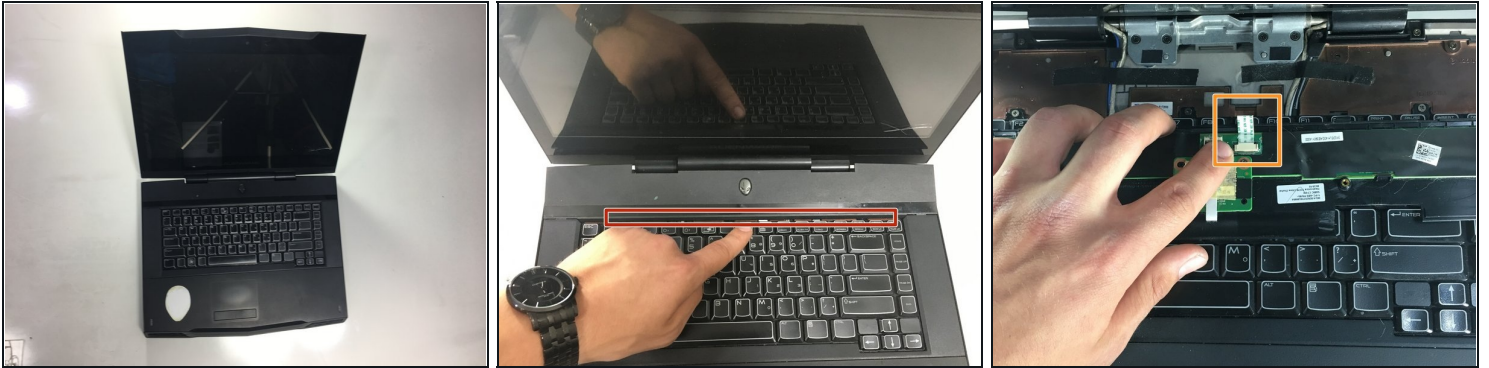
- Remove the four 4mm screws with the Phillips #1 screwdriver.

Step 5



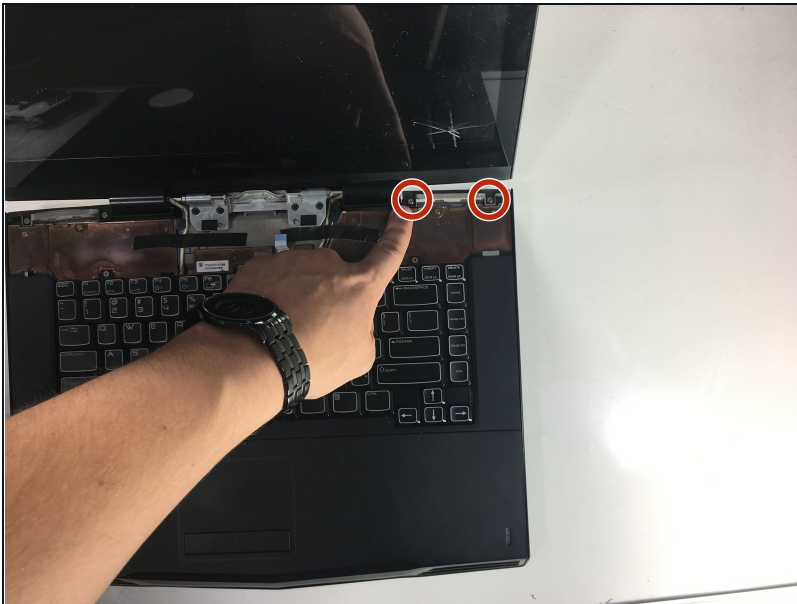
- Position the laptop vertically so that the hinge is facing up and the laptop is slightly open toward the ground
- ① The laptop position should resemble an upside-down V shape.
- Locate the panel and pry open using a plastic opening tool.

Step 6



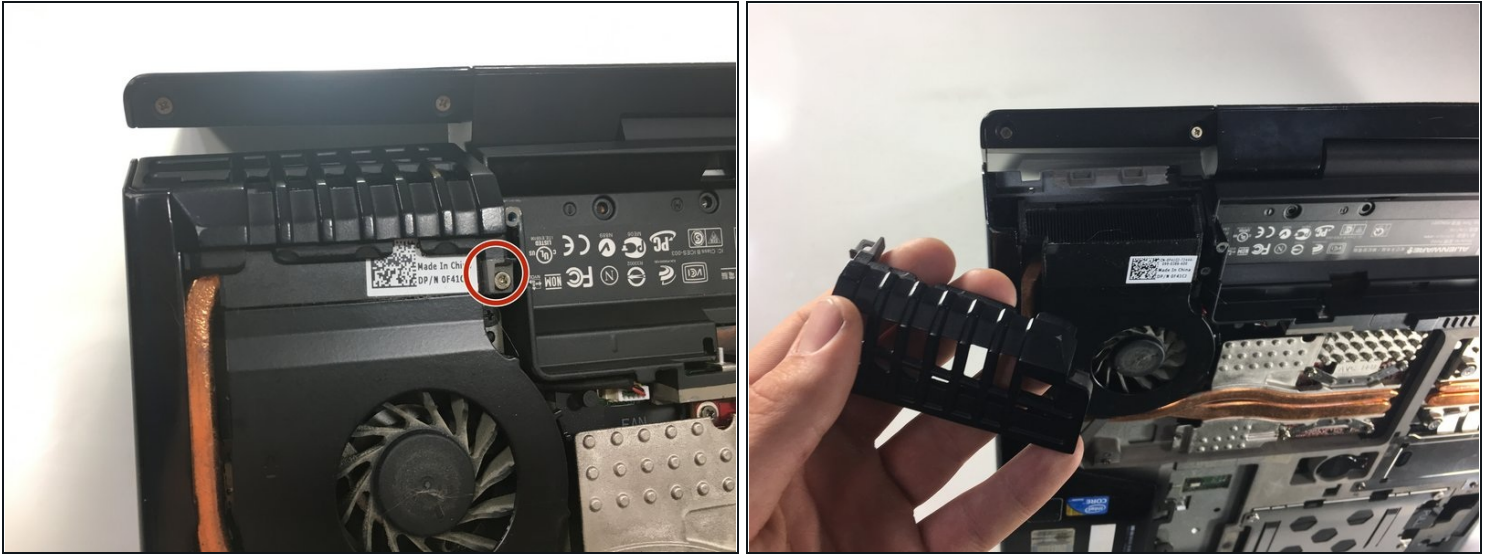
- Position the laptop normally, with the bottom on the ground and the screen flipped up towards you.
- Lift the power button panel using the plastic opening tool.
- Disconnect the ribbon cable by using [tweezers](#) to unclip the two small black clips. Remove power button panel.

Step 7



- Remove the two 4mm screws with a Phillips #1 screwdriver.

Step 8



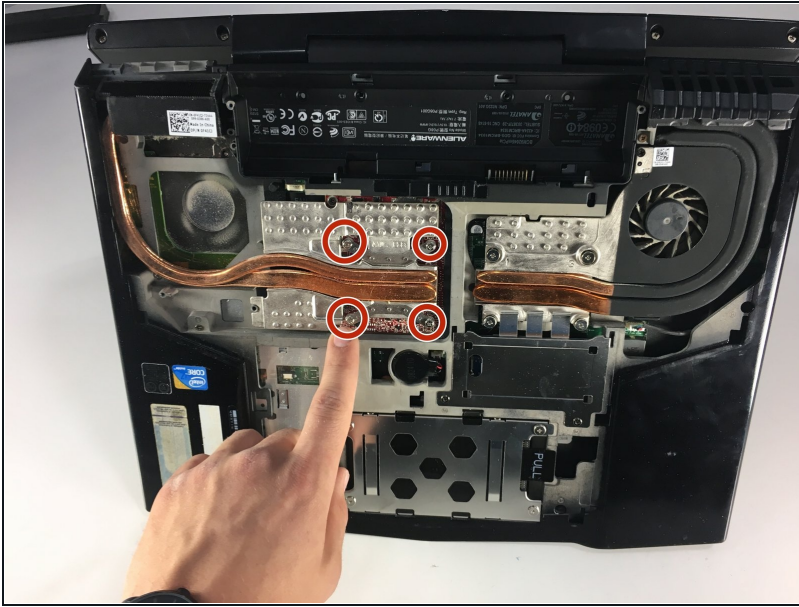
- Use a Phillips #1 screwdriver to remove the 4mm screw from the exhaust port cover.
- Remove the exhaust port cover entirely.

Step 9



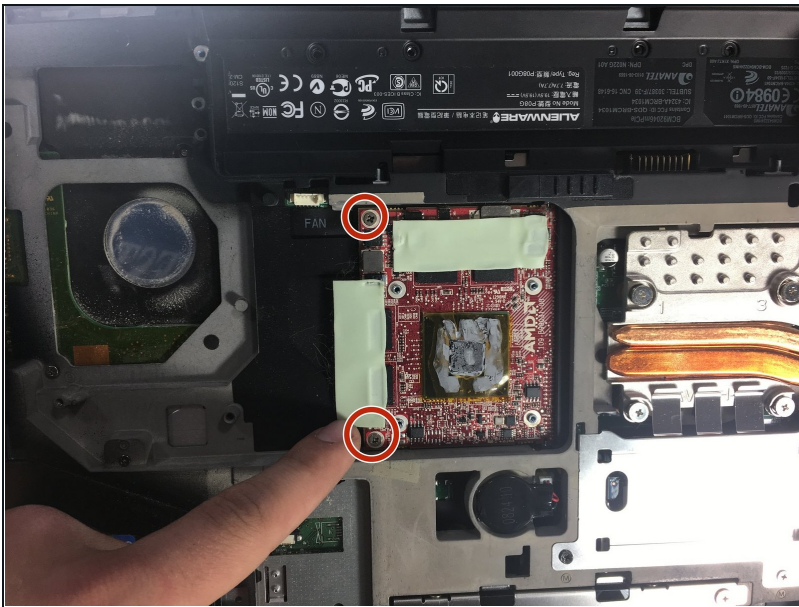
- Use a Phillips #0 screwdriver to remove the two 3mm screws holding the fan in place, then unclip the electrical connection using tweezers.

Step 10



- Remove the heat sink by loosening the 4 screws with a Phillips #0 screwdriver.

Step 11



- Use a Phillips #0 screwdriver to remove the two screws.
- Remove the GPU from the laptop.
- ☑ When replacing the GPU, it is important to reapply thermal paste in a small line along the length of the chip.

To reassemble your device, follow these instructions in reverse order.