



Shark Rocket Powerhead AH401 Post-Motor Filter Replacement

This guide shows how to replace the Post-Motor Filter on your Shark Rocket Powerhead AH401.

Written By: Shobhit Dabral



INTRODUCTION

Dust will build up on the filter over time and block the airway, which will reduce the efficiency of the machine. This guide will show you how to replace a dirty or old Post-Motor Filter on your Shark Rocket Powerhead AH401.




PARTS:

- [Post-Motor Filter](#) (1)
-

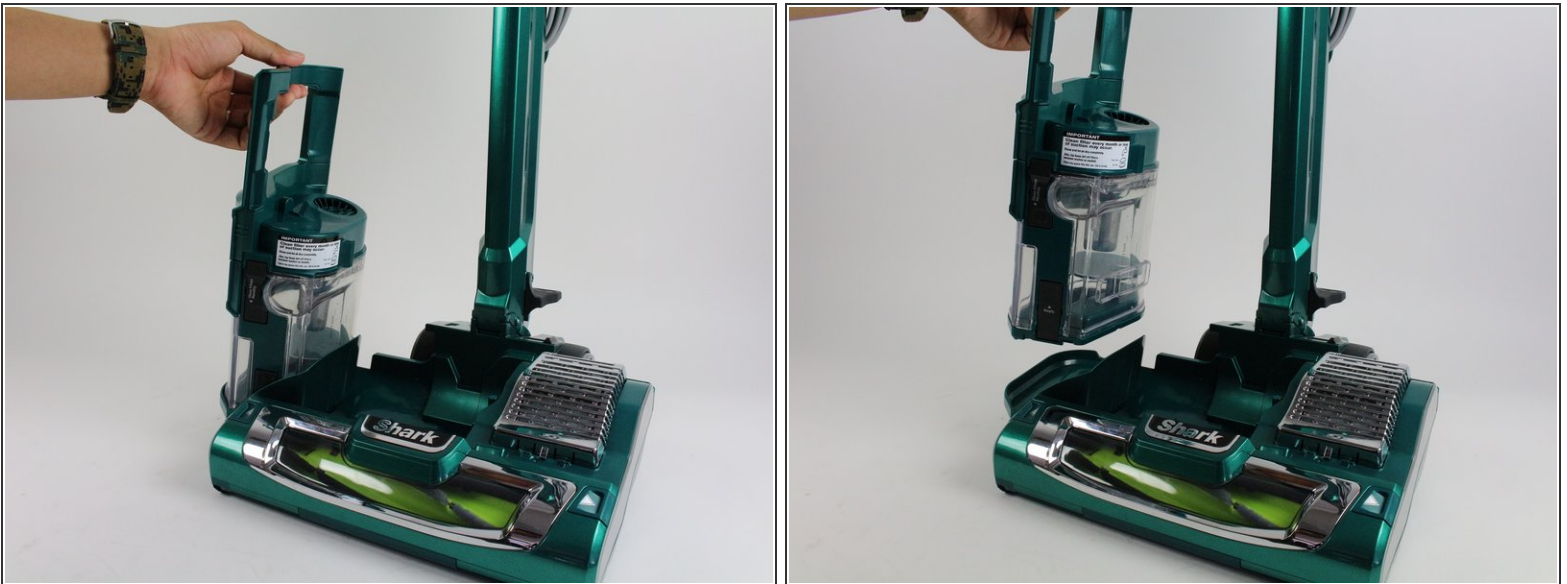
Step 1 — Dust Cup



 Ensure the device is turned off and unplugged from any power source before beginning work.

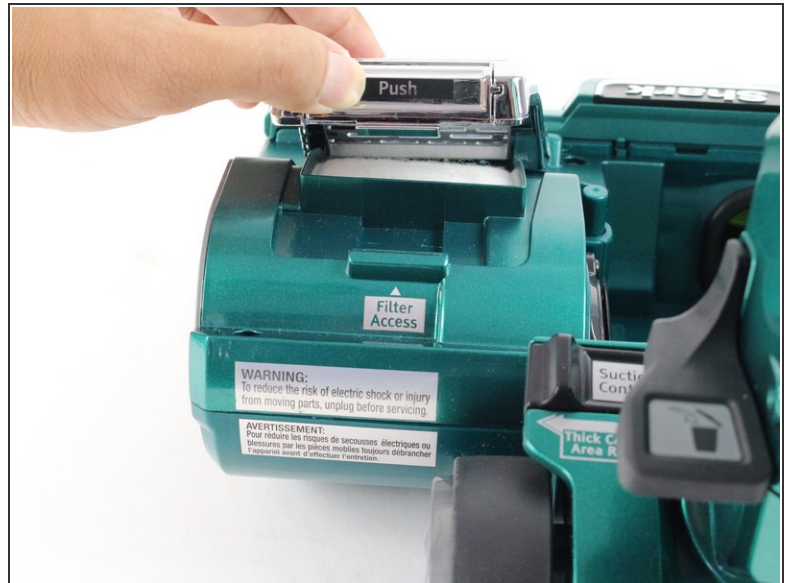
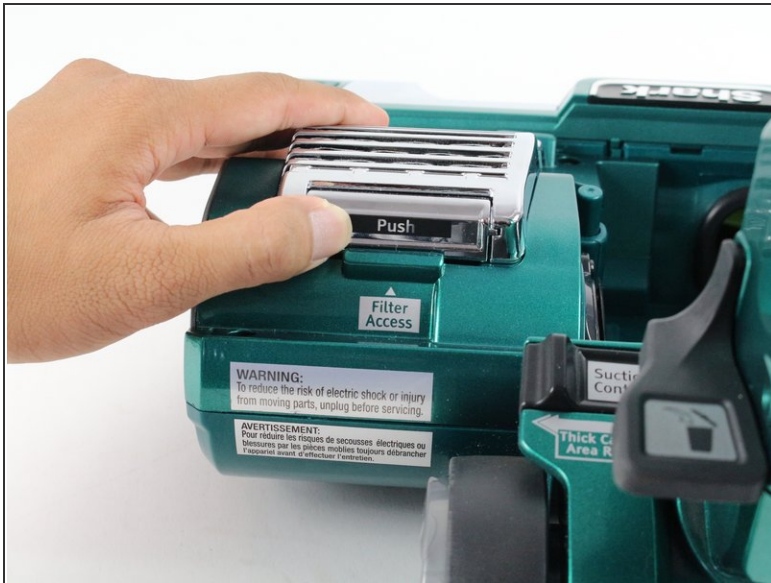
- Push down on the dust can lever to release the dust can in order to get to the filter grill.

Step 2



- Remove the dust cup by lifting it off the dock.

Step 3 — Filter Grille



- Push inward on the top of the filter grille where it says "Push."
- Lift the filter grille upward.

Step 4



- Lift gently and pull the grille up towards you until it releases.
- i** The post-motor filter is underneath the filter grille.

Step 5 — Post-Motor Filter



- Remove the filter by pulling it out and away from the device with your hand.

To reassemble your device, follow these instructions in reverse order.