



# Bissell Powerglide Cordless Brush Roller Replacement

Brush roller doesn't seem to be spinning anymore? Follow this guide to replace the brush roller.

Written By: Joseph Adam Johnson



## INTRODUCTION

Brush roller doesn't seem to be spinning anymore? Follow this guide to replace the brush roller.



### TOOLS:

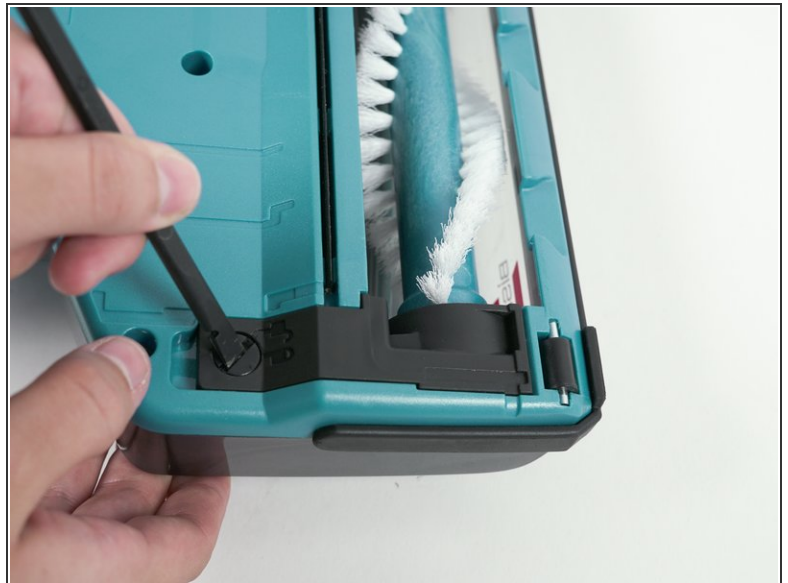
- [Spudger](#) (1)



### PARTS:

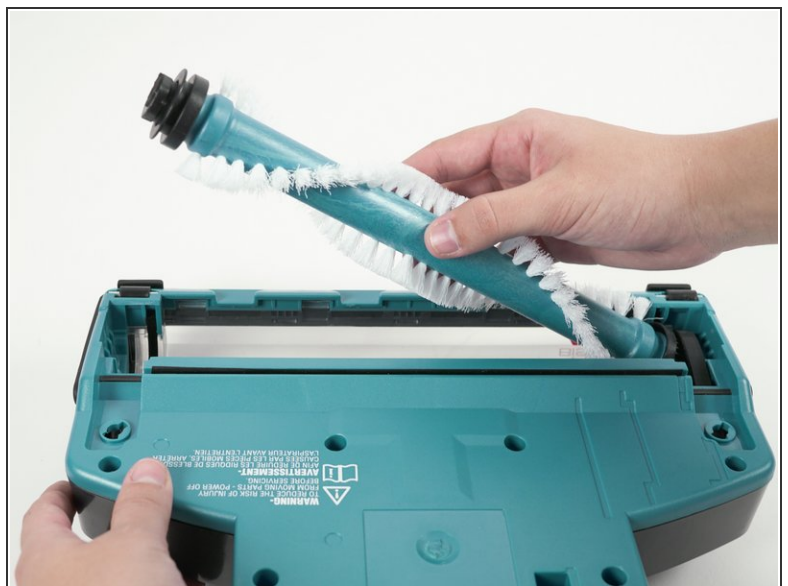
- [Bissell Powerglide Cordless Brush](#) (1)

## Step 1 — Brush Roller



- Unlock the brush roll guards by twisting the lock screw to the left.
- Remove the black plastic strips you just unlocked.

## Step 2



- Grasp the brush roll firmly and pull up to remove the brush roll.

To reassemble your device, follow these instructions in reverse order.