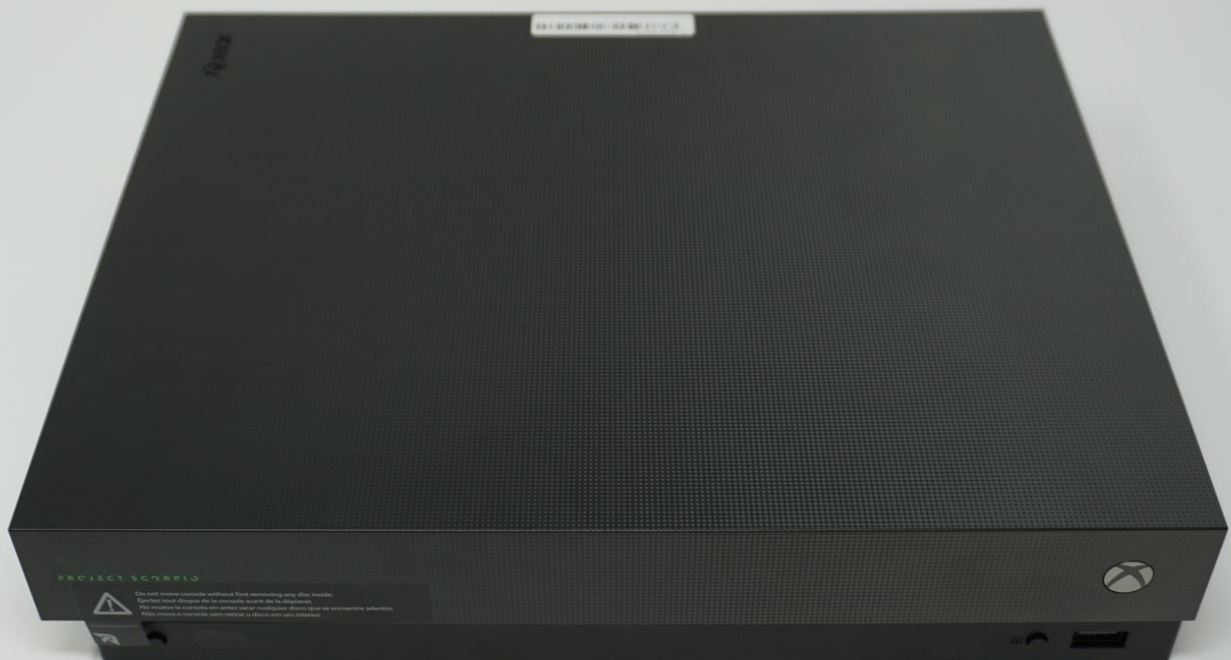




Xbox One X Project Scorpio Edition Outer Case Replacement

Removing the external casing for the Xbox One X Project Scorpio Edition gaming console made by Microsoft in 2017.

Written By: Ashley Masuda



INTRODUCTION

This guide details how to take off the outer plastic case of the Xbox One X. This could be useful for replacing the case itself if it is damaged. Removing the outer case is also necessary for replacing any of the interior components. Before starting, it is recommended that you make sure you have the right tools as well as a clean environment with plenty of room for organizing the components. Be aware that disassembling your Xbox could void your warranty, so you may want to read those terms and conditions in advance.

TOOLS:

- [T9 Torx Screwdriver](#) (1)
 - [Precision Tweezers Set](#) (1)
-

Step 1 — Outer Case



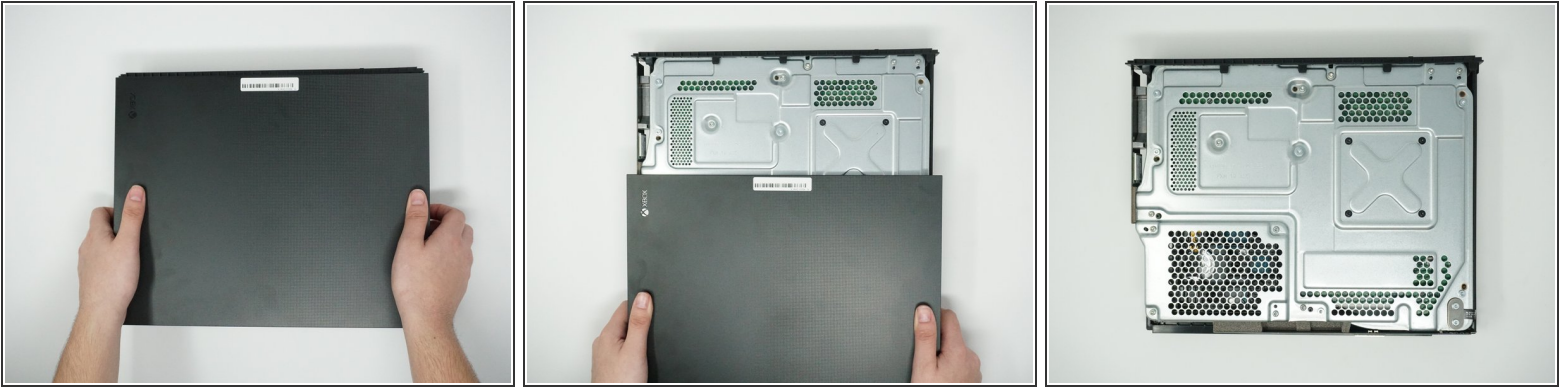
- Use a T9 Torx screwdriver to remove the 13mm screw which is under and to the left of the power input.

Step 2



- Using precision tweezers, remove the screw tab located on opposite side of the box.
- Use a T9 Torx screwdriver to remove the 13mm screw revealed underneath the tab.

Step 3



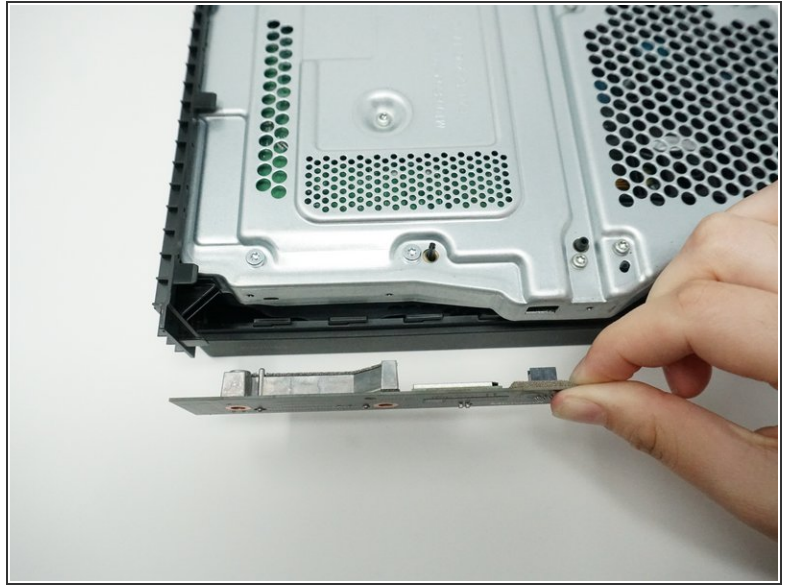
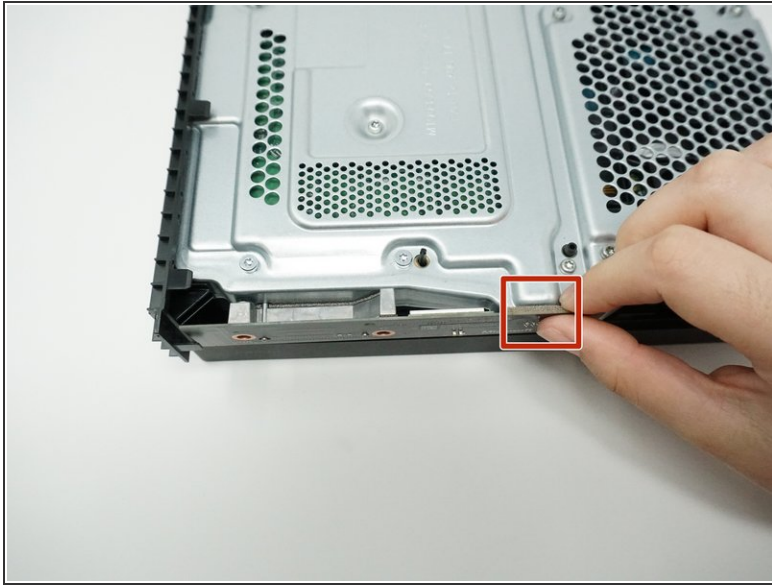
- Orient the case so that the front of the Xbox (the side with the power button) is facing you.
- Remove the top of the case by sliding the case towards you.

Step 4



- Using a T9 Torx screwdriver, remove the two 15mm silver screws that are holding a circuit board/panel to the side of the interior metal casing.
- Using the same screwdriver, remove the 9mm black screw located farther to the right on the same circuit board/panel.

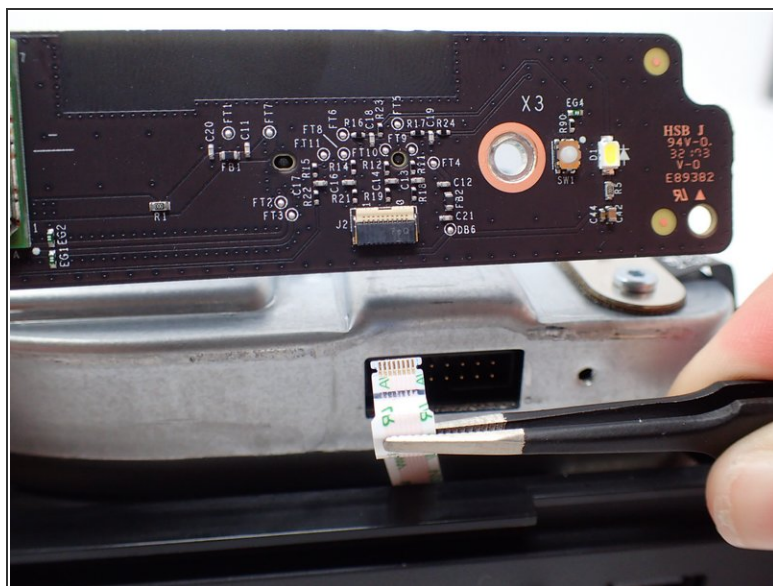
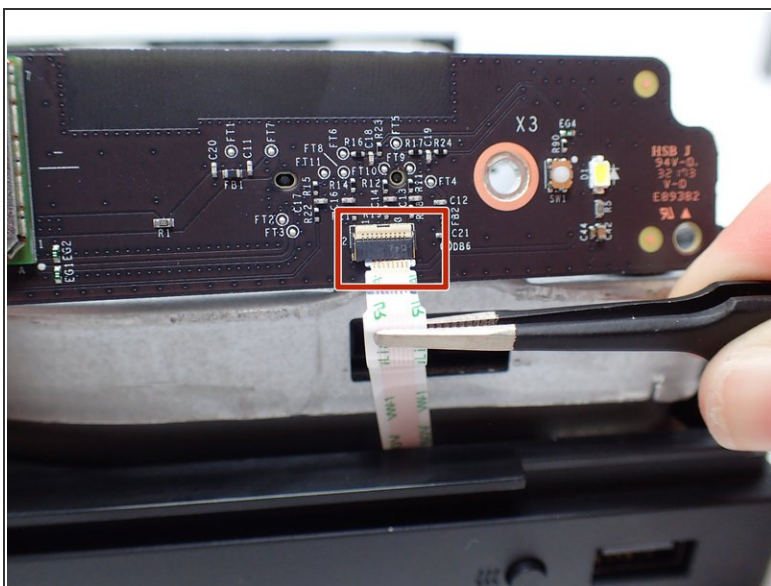
Step 5



- Remove the unscrewed panel from the side of the device by pulling it toward you.

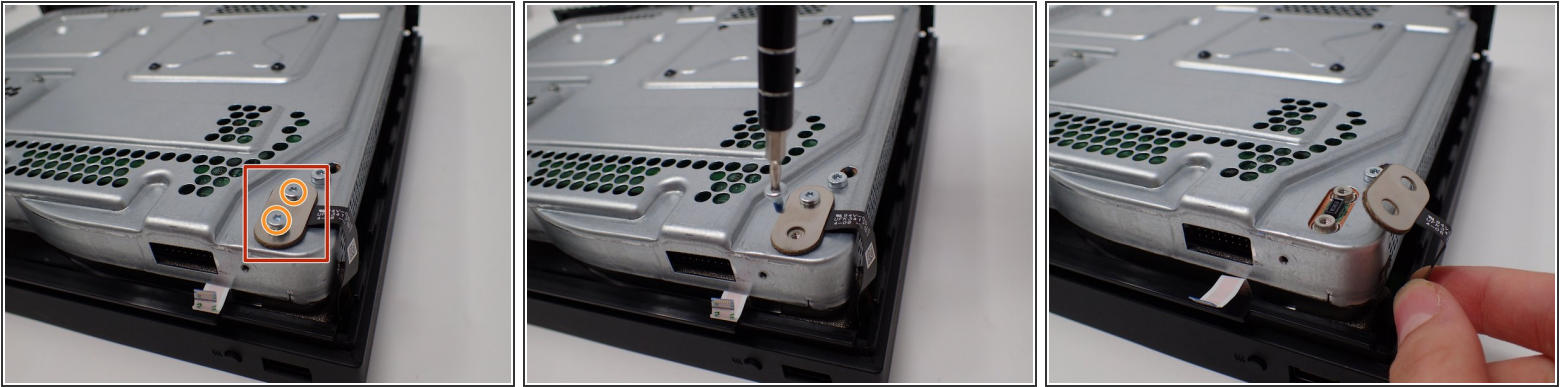
 Be mindful of the connector, as it is fragile.

Step 6



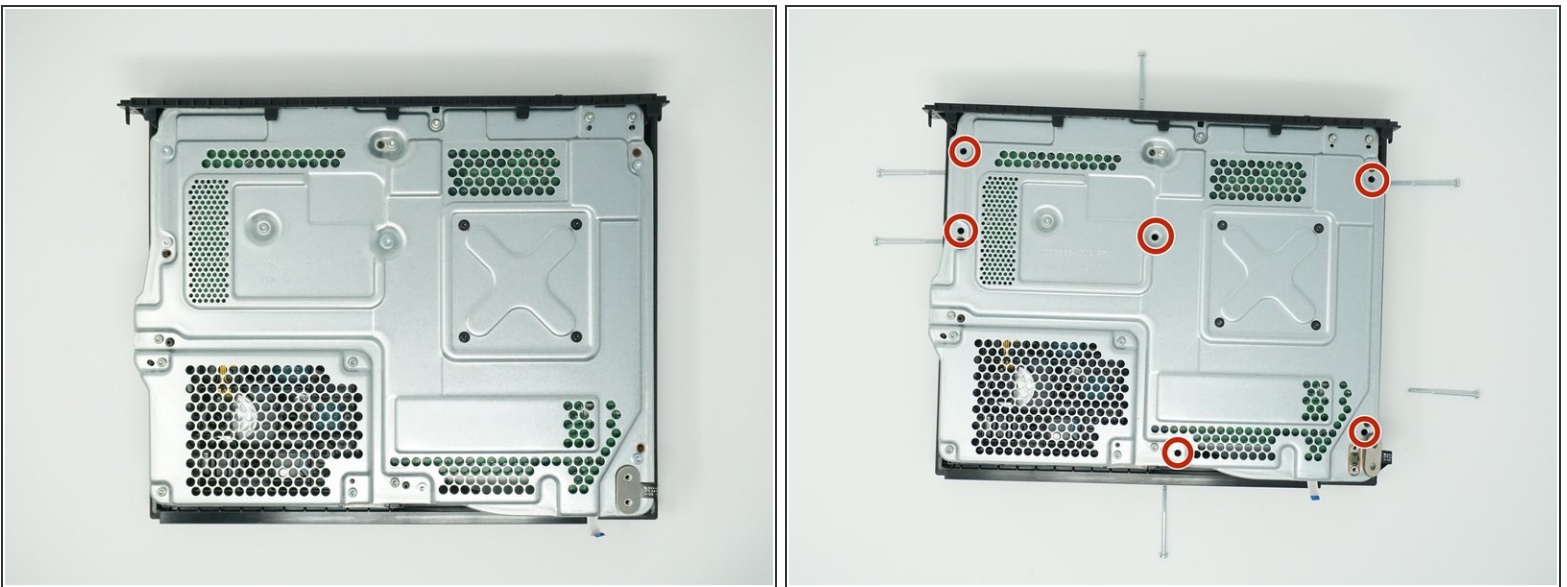
- Pull the upper edge of the white clip down, and then remove the white connector from the dislocated panel using precision tweezers.
- ⓘ Do not force the connector out, as it is fragile. Wiggling may be necessary.

Step 7



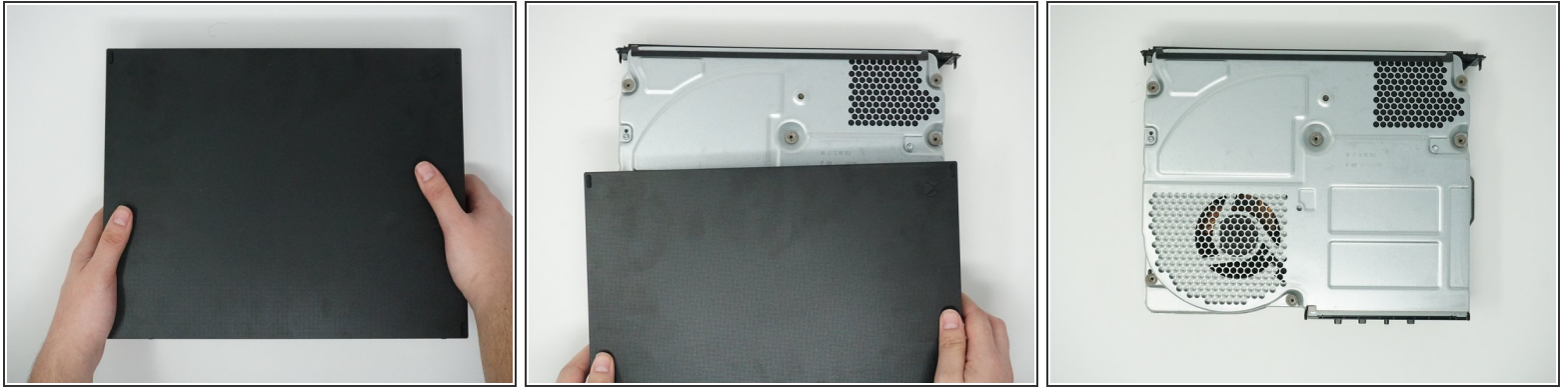
- On the top of the device in the corner directly above the white connector, there is an oval plate held in place by two screws.
- Remove both of these 7mm screws with a Torx T9 screwdriver.
- Lift the detached plate off to the side.
- ⓘ The plate is still connected to the device.

Step 8



- Use a Torx T9 screwdriver to remove the six 47mm long screws, which attach the bottom side of the outer case.

Step 9



- Turn the Xbox over, so that the bottom of the case is on top.
- Lift the bottom of the case off of the Xbox by pulling it up and toward you.

To reassemble your device, follow these instructions in reverse order.